

Trend Toward Home Laundries Moves To Kitchen

Do you want to know where your home laundry is going to be? A majority of laundries today are still in the basement, but the trend is toward the combined kitchen-laundry in new or remodeled homes.

With modern appliances, cooking and laundry can be done at the same time and in the same room while the lady of the house is busy at still other tasks.

The new matched washers and dryers placed side by side give added counter top working space in the kitchen. And the colors can match the other appliances, carrying out your decorating scheme to the letter.

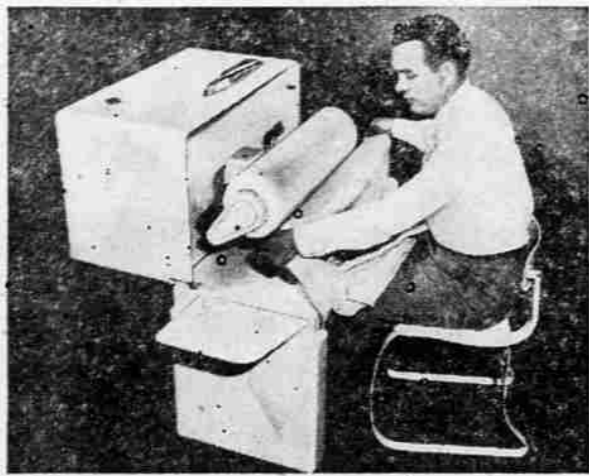
Beauty and Efficiency. Now that water heaters are coming in new shapes and matching colors, the laundry center as part of the kitchen can be a definite addition beauty-wise, as well as for efficiency. It's a good idea to have the water heater close to machines using the hottest water to prevent loss of heat as the water travels.

If you're planning a new kitchen it's easy to work in your laundry. If you're remodeling an old kitchen, you may have a space problem. The new washer-dryer combinations are a big help for cramped quarters. It pays to spend time thinking of just where you want your laundry. You can lose the time and energy the machines save you if they're installed without a thought to the convenience of the arrangement.

Keep in mind that the ideal home laundry should be divided into four work centers:

There Are Four:

1. Preparation center: Basic equipment here should include a sorting table, mending basket, soaking sink and beaches.
2. Washing center: Be sure this is near a source of plenty of hot water. Wash tubs, wash-



HUSBAND-PROOF—It's Christmas Eve and all through the house not a creature is stirring but this husband, trying out the new ironer he bought for his wife. He just wanted to make sure his gift would be the best. (P.S. When he finished ironing this shirt, he was convinced.)

Ironing Plays Big Part in Her Living

Many housewives are so dazzled by the automatic efficiency of the sparkling washer and dryer in their laundryroom they have forgotten that ironing plays a big part in gracious living.

Who can deny that a bed made with freshly ironed sheets has a look of luxury obtained in no other way? How much prouder do you feel when your guest towels have the crispness only ironing can give them?

You may be surprised to know that these symbols of a truly distinguished home can be obtained without a return to the drudgery that, once associated with them. A homemaker who is determined to retain graciousness while protecting her own precious time can find the answer she searches for in an automatic ironer.

With an ironer, she can enjoy smooth linens and towels throughout the house with only a few minutes of extra work. These are flatwork items, which even a beginner can do quickly and perfectly on an ironer.

It is important to remember that flatwork can represent 70 per cent of a load of ironing in the average home.

For those who are willing to acquire a new skill, there is the further reward of being able to give all the family's clothing a professional finish with a minimum of work.

The most popular ironer is the cabinet style, with clean-looking white enamel finish. Some have height casters adjustable to the height of the user. It is easy as pie to tilt back the hinged cover and swing out the ironing unit from its storage space.

Cabinet-style ironers have lap panels to support dampened articles before they go through the roll and one or two extension shelves for stacking folded items after finishing.

Also on the market is an ironer adaptable for use anywhere in the home. Of console design, this model comes in read mahogany or lined oak and has graceful wrought-iron legs.

Washer and Dryer Like Having Facial

Lots of smart housewives who want to stay young find that owning an electric washer-dryer combination is just about as effective as having a weekly facial.

Instead of the back-breaking washday chores they used to suffer through every Blue Monday, they now load in the weekly wash, add detergent, push a button—and go off to shop to visit or see a movie.

Refreshed from the outing, they return to find clean, dry clothes waiting for them.

The time they used to spend hanging the wash out on the line and then watching to see if it would rain or blow up a duststorm—now all that precious time is theirs to spend on better living. Some homemakers load the washer at night and find the dry clothes ready when they get up in the morning.

The electric washer-dryer combinations wash, rinse and fluff-dry (or damp-dry) in one continuous operation. Some even choose the correct amount of water necessary to wash each load efficiently.

You can get separate washer and dryer units, too, if you prefer.

Greater Emphasis on Incentives Suggested

Chicago (UPI)—A technical educator says greater emphasis must be placed on incentives if the United States is to meet the challenge of an expanding economy.

Dr. John T. Rettaliata, president of Illinois Institute of Technology, expressed this opinion in his annual report to the institute's board of trustees.

"Since the creative individual is a vital link to the dynamic society predicted for the future he should be cultivated, encouraged and permitted to work in a climate compatible with intellectual prolificness," Rettaliata said.

He said individuals and organizations are most productive when there is a stimulus to research and invention.

Currently, he said, there are several deterrents to the expenditure of extra effort by individuals and corporations. He said these include: the income tax level, commercial restraints and the use of patents as a regulatory mechanism.

"When companies, through ingenuity and industriousness, have established leadership in some area it would not appear justified that they be penalized for such efforts," Rettaliata said.

FREEZE LEFTOVERS

It's a good idea to cook double or triple portions of your favorite recipes so you can freeze whatever is left over for later meals.

FREEZER HINT

Try to arrange foods in your freezer so that those frozen first are used first.

Cabinet Sink Focal Point in Modern Plan

Focal unit for modern kitchen planning is the cabinet sink. De luxe models, now within the range of all budgets, include many items of kitchen convenience. Among them are: pull-out

bread cutting board, towel holder, compartmented bread drawer, rinsing spray, and single handled faucet.

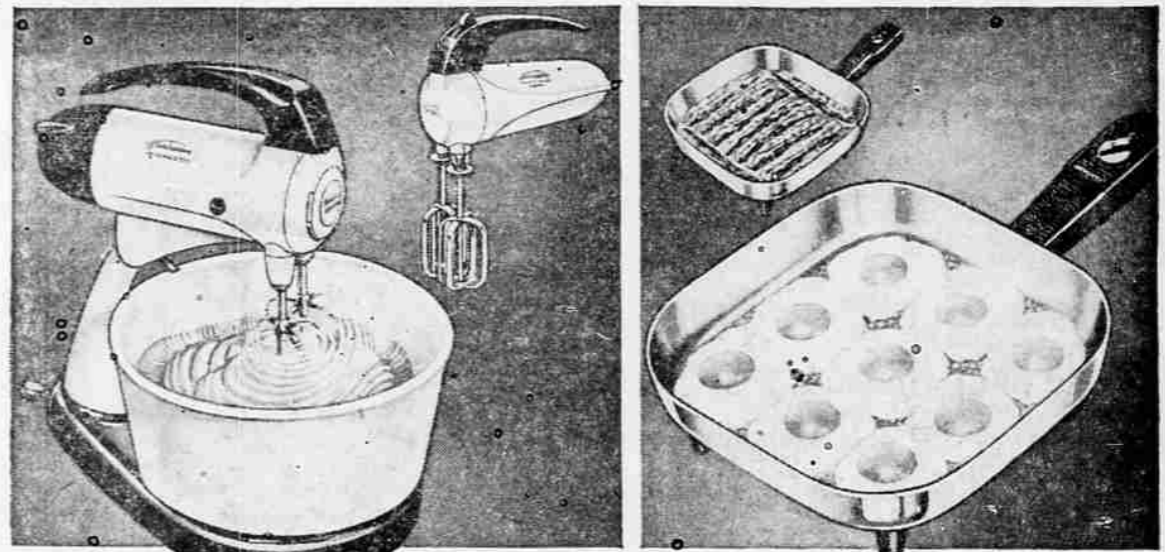
Steel kitchen cabinet manufacturers offer this basic unit in easily matched colors.

Today's steel kitchen cabinets provide built-in facilities such as pull-out shelves and racks.

WHAT IS NATURAL GAS?

Have you been wondering just what natural gas is? Formed millions of years ago through the decomposition of matter, it is found in pockets of sponge-like rock far below the earth's surface. It can only be found by drilling successive wells until the gas-bearing strata is located.

This Christmas LOOK FOR THE MARK OF QUALITY



Sunbeam MIXMASTER & MIXMASTER JUNIOR

MIXMASTER—Has all the features that give you higher, lighter, finer textured cakes—creamier, fluffier mashed potatoes—better, easier food preparing. Has exclusive Bowl-Fit Beaters, Automatic Bowl-Speed Control, and a motor that gives full power on all speeds. Now available in five beautiful colors—White, Chrome, Turquoise, Pink and Yellow.

MIXMASTER JUNIOR—The best Junior Mixer made—has bigger beaters and thumb-tip control. Available in five beautiful colors—White, Chrome, Turquoise, Pink, and Yellow.

Sunbeam CONTROLLED HEAT FRYPAN

Foods taste so much better when prepared in the Sunbeam Controlled Heat Automatic Frypan. Easy-to-set dial on handle gives perfect controlled heat for cooking or frying. Handy fry-guide gives correct temperatures—Easy to wash, water-sealed element. Square shape cooks 20% more. Available in medium, large, and super sizes to meet your family needs. High dome covers of either aluminum or heat-resistant glass are available for fried chicken, roasts, etc.

189.95

BUYS THIS QUALITY 21 SERIES Hoffman



THE MAR VISTA 21 Series Mark 10 chassis with New Black lens, aluminum picture—in black metal. Matching legs extra. K1081. Also available in blond.

COME SEE!

COMPARE THIS QUALITY WITH ANY ORDINARY TV!

SUPER 21 SERIES—26 1/2 inch viewing area—1 inches shorter in cabinet depth

NEW BLACK LENS—lets you enjoy a bright picture even in daylight...cuts effect of room light by 76%.

MARK 10 CHASSIS—with extra-quality features—cold chassis design, hard tube rectifiers, and Sync-Lok control for best reception in any area.

CALIFORNIA—with "new profile" appearance and convenient top tuning

STYLING—in mar-resistant metal cabinet.

COME SEE! THERE'S NO TV VALUE LIKE HOFFMAN!

Winkler Inc. RADIO PHONOGRAPHS HI-FI TELEVISION

Sales and Service 8th and Bartlett Ph. 2-9824



MAN AT WORK—He's doing a man-sized job, getting out the family wash. As you can see, with the new automatic washers "Blue Monday" isn't a particularly strenuous affair.

FOR STAND-UP JOBS YOUR COUNTER SHOULD ENABLE YOU TO WORK LIKE—

This **Not This**

A LAP BOARD SHOULD PERMIT—

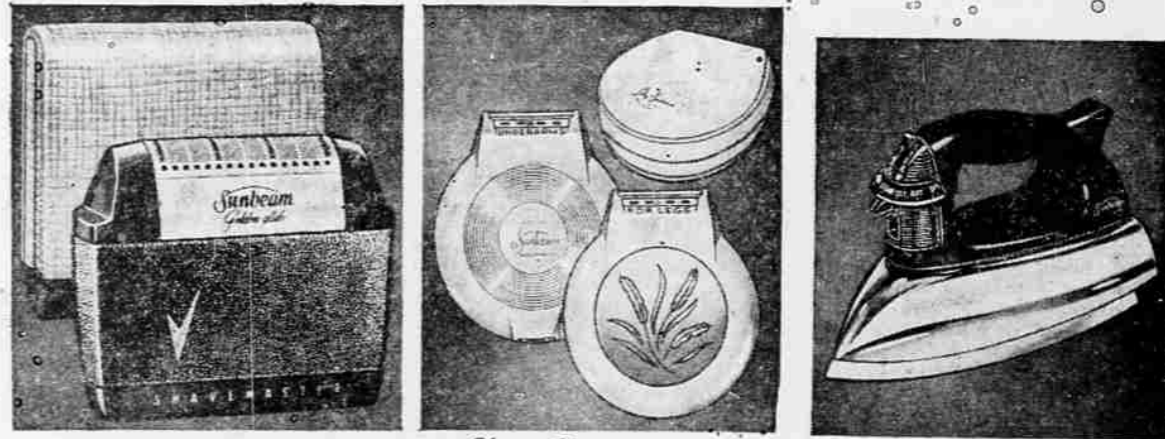
This **Not This**

THE SINK SHOULD ALLOW YOU TO STAND LIKE—

This **Not This**

Fill Your Locker with OK MARKET'S GOOD & CHOICE FED BEEF SPECIAL PRICES NOW! Phone 3-4462

OK MARKET 1202 North Riverside OPEN EVERY NIGHT TIL MIDNIGHT



Sunbeam Golden glide SHAVEMASTER

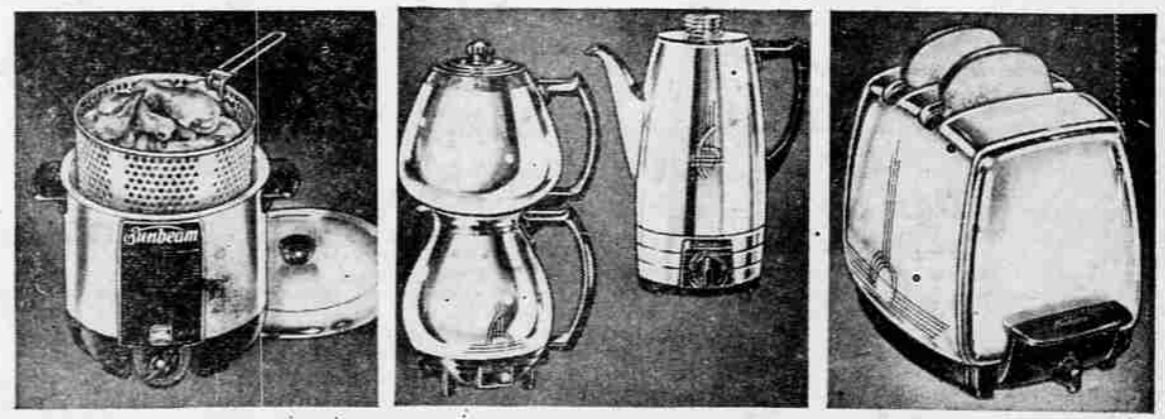
Shaves closer and smoother than blades or other electric shavers by actual independent tests. Has new, scientifically precision honed Golden Glide head and faster, armature-type REAL motor. Available in handsome carrying case (shown) that can be used for a wall cradle holder. Also available in a genuine leather zipper case.

Lady Sunbeam SHAVEMASTER

Sweeping America! Only the Lady Sunbeam has the easy-to-use "compact" shape and the exclusive MICRO-TWIN head—one side for shaving underarms, the other side for shaving legs close, clean and smooth. Available in 6 beautiful colors.

Sunbeam STEAM OR DRY IRON

Has exclusive steam flow vents that give you an all-over cushion of rolling steam to iron on! Holds more water than most irons, yet is lightweight—weighs only 3 lbs. net. Hot in 30 seconds—steam in two minutes. Switch instantly from steam to dry or from dry to steam.



Sunbeam COOKER & DEEP FRYER

Does More Things Better—Automatically. It's a DEEP FRYER • COOKER • CHAFING DISH • CASSEROLE STEAMER • BUN WARMER • CORN POPPER • BLANCHER FOR VEGETABLES FOR HOME FREEZING • ALL IN ONE. Exclusive COOK-GUIDE. Accurate thermostatic controls with SIMMER RANGE.

Sunbeam COFFEEMASTER & PERCOLATOR

COFFEEMASTER—You get the same delicious cup of coffee every time! Just put in coffee and water and set the switch on high—the rest is done automatically.

PERCOLATOR—Finest made. Has Easy-to-set strength selector dial. Available in 8 and 10-cup sizes.

Both the COFFEEMASTER and the Percolator are made of solid copper and heavy nickel and chrome plated for lasting beauty.

Sunbeam AUTOMATIC TOASTER

The only completely automatic toaster. Toasts with RADIANT CONTROL—adjusts automatically for any kind of bread—whether thick or thin, fresh or frozen, white or rye. Bread lowers itself automatically. No levers to push. No motor to wear out. Selector control for any kind of toast you desire.



SEE YOUR Sunbeam DEALER