

Scientists have recently announced that the inclusion of vitamin B6 to the diet of animals sharply reduces tooth decay.

**Stewart Avenue Railway Crossing Still Closed**  
Southern Pacific railroad company Friday indicated to city officials that the Stewart ave. crossing repair will not be completed until sometime Monday.

Public Works Director Vern Thorpe said the crossing will remain closed until sometime Monday afternoon. The crossing was closed last Tuesday when repair work started.

**Newsboys Take Over In Distributor's Place**  
High Bridge, N. J. — (U.P.) — When a newspaper distributor suddenly decided to quit his job before the day's papers were doled out, three teen-age boys took over for him.

Their service was an improvement on the speed of the former newsboy, but police didn't think the job as a whole was well done.

Police Chief Clifford A. Rice ordered the boys, aged 14, 15 and 19, to pick up the hundreds of newspapers they had scattered over seven streets.

**Circuit Court Plea Brings Prison Term**

Theodore Benjamin Crosby, transient, pleaded guilty in circuit court Thursday afternoon before Judge H. K. Hanna to charges of using a motor vehicle

without the owner's permission. He was sentenced to 18 months in Oregon state penitentiary at Salem.



**STANDING BY WINDOW** of train, Prince Charles and sister, Princess Anne, provide London papers with new topic of discussion—length of the prince's hair. One newspaper said: "The prince's hair was even closer to his eyebrows than usual." (International Soundphotos)

**Venus, Jupiter Near Each Other in Eastern Heavens**

By FAY BENTLEY  
"What is the name of the brilliant star which shines in the east every morning? I've never seen anything like it!" a hunter recently remarked.

The "star" which has fascinated a number of early risers during this hunting season is none other than our old celestial friend, the planet, Venus. It is truly a thing of beauty as it ascends the eastern heavens in the early hours before dawn.

**Fitting Companion**  
A fitting companion to the goddess of love and beauty is Jupiter, named after the king of the Roman gods, and largest of all the known planetary bodies. Jupiter comes into view one hour later than the "Morning Star."

Only slightly smaller than our earth, Venus is often called the earth's "sister-planet." Jupiter with a diameter approximately 11 times as great as the distance through the earth is more than 1,000 times the size of Earth. Even so, Venus is the more spectacular, by far, of these star-like bodies which grace the morning sky.

"Why is Venus so much brighter than the huge planet, Jupiter?" people sometimes ask. The apparent brilliance of Venus is due to two reasons. Surrounded by dense clouds, the albedo, or reflecting power of its surface is greater than the reflecting power of the surface of Jupiter, which is covered by a cloud-laden atmosphere of less density.

**Distances Listed**  
Jupiter is approximately 483 million miles from the sun while Venus is only 67 million miles from the center of our solar system. This causes an area on Venus to receive about 54 times as much light as an equal area on the surface of Jupiter. As all planets shine by reflected sun light the surface of Venus is intrinsically far more brilliant than the surface of the giant "king of the gods."

The mean or average distance of the earth from the sun is about 93 million miles. Thus we can see it is possible for the earth and Venus to come much closer to each other than the earth and Jupiter. So when earth-dwellers view these two celestial beauties in the early hours of morn, Venus appears to be larger than Jupiter.

At the present time the magnitude, or apparent brilliance of Venus is -3.6 as compared with Jupiter's magnitude of -1.3. The

magnitude scale is not an arithmetical but a geometrical series of brightness, and this magnitude difference of 2.3 between Venus and Jupiter means that Venus appears to be more than six times as bright as the King of Planets.

**Mars Mentioned**  
While discussing planets, we must not neglect to mention Mars, whose fiery red color outshines everything but the moon in the evening sky. Its near approach to the earth results in an apparent visual magnitude of -1.3, making it appear 1 1/2 times brighter than Jupiter.

However, this is not always the case, and as the distance between the earth and Mars increases, the "god of war" will lose much of its apparent brilliance.

On October 25, Venus will be only 13 minutes or less than one-fourth of one degree north of Jupiter in the eastern sky. Remembering that the distance between the Pointers of the Big Dipper is about five degrees will help in estimating the slight apparent distance separating these two planets. Of course, they are actually millions of miles apart.

For a few mornings before and after this date, as well as on Oct. 25, these two planets will present a splendid sight. Just before daylight, around 5 a.m. will be a good time for observation.

**ELECT A MAN WHO KNOWS WHAT HE'S DOING!**



Allen Curry has lived in Jackson County over 30 years. He knows the people and their problems. He has had over 15 years of experience in county governmental departments — was for three years a township assessor in Kansas. Allen Curry has the experience necessary for this important office.

**ELECT ALLEN D. CURRY COUNTY ASSESSOR**

Pd. Ad.—Jackson Co. Rep. Central Comm.

**Horse Takes Lounge On Dash Through Town**

Quincy, Calif. — (U.P.) — Melvin H. Schooler was reclining on a chaise longue in his backyard. His horse, Brandy, was tied to one leg of the piece of furniture grazing on the lawn, a little trick of Schooler's to cut down on mowing.

Schooler left for a moment, and when he returned, horse and couch were gone in a cloud of dust.

Brandy barreled through five downtown intersections, knocking off parts of the couch en route. Seven blocks later he stopped. Hanging onto the panting horse was one leg of the couch.

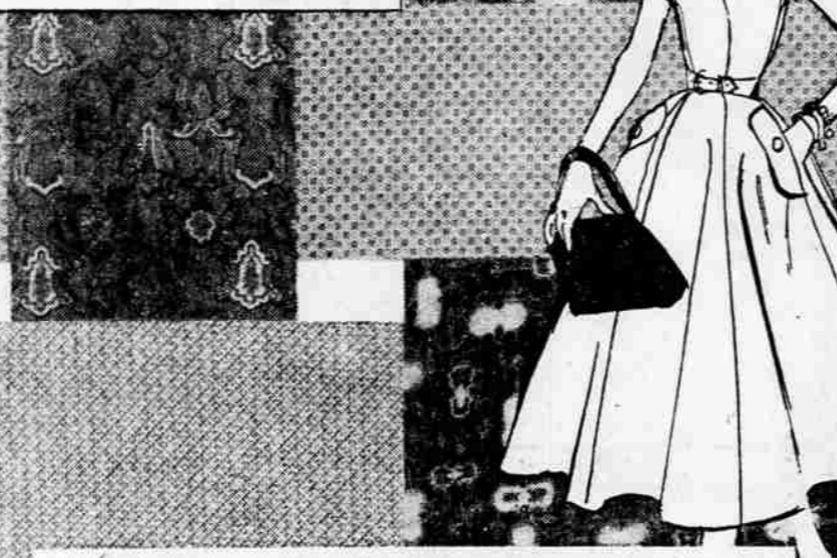
**BUT NOT POOR**  
Salem, Ore. — (U.P.) — Some residents here will be on Poverty Street soon. The street is included in a subdivision recently approved by the City Planning Commission.

**MEDFORD PENNEY'S ALWAYS FIRST QUALITY!**

IT PAYS TO SHOP PENNEY'S

*Fabricade of fashion fabrics*

**"REGULATED" COTTONS SPEAK THE LANGUAGE OF FASHION!**



**NEVER MISBEHAVE! SANFORIZED\* MACHINE WASHABLE PRINTS**

Sewing is pure joy when you choose Penney's nationally-advertised "Regulated" Cottons with brilliant inspiration woven into every fascinating yard! Here are up-to-the-minute prints more wonderful than ever... with virtues more varied than you'll find anywhere at this low, low price! Combine the prints with "Regulated" solid colors, too, for costumes with a "made-to-order" look!  
\* Maximum shrinkage 1%.

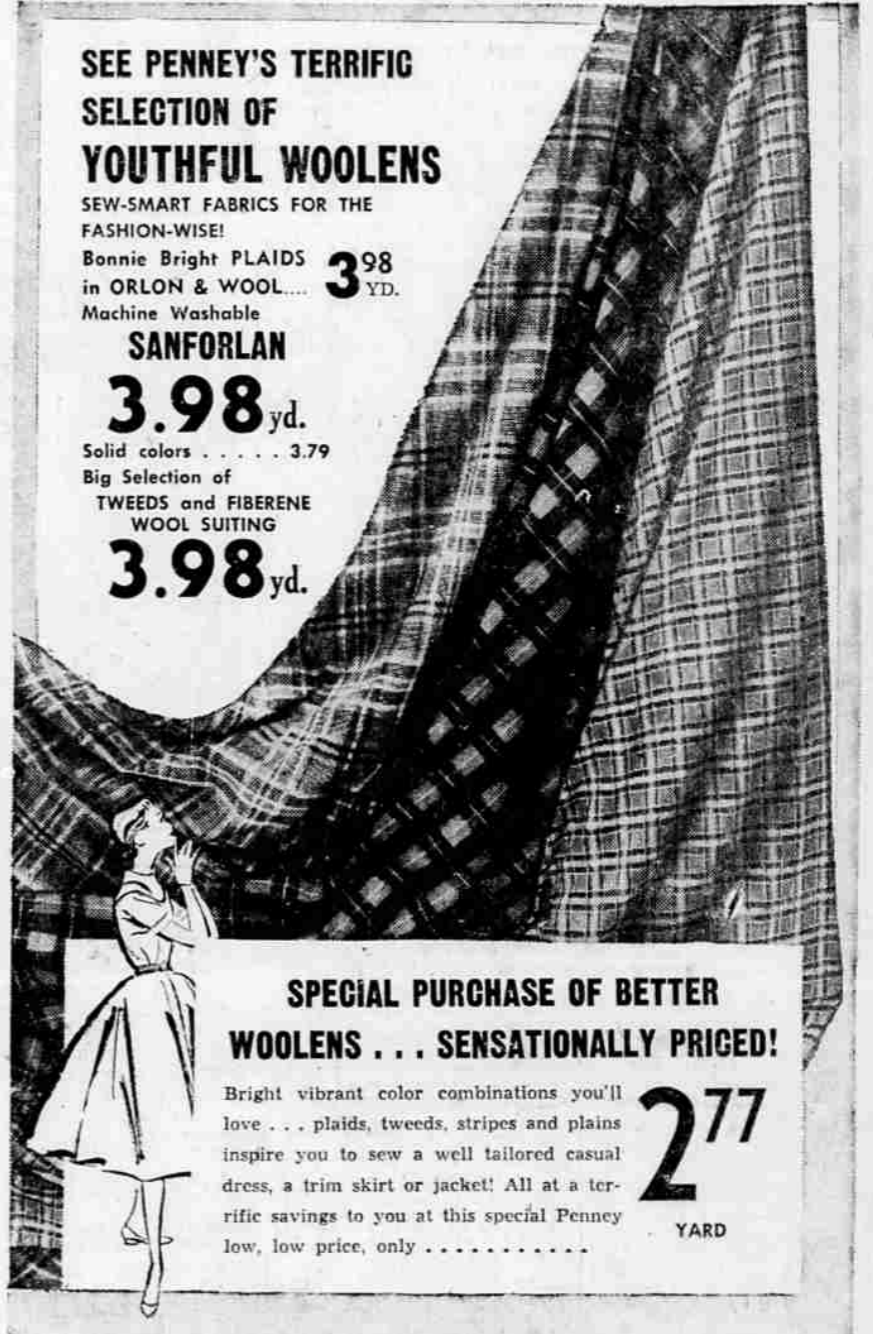
**79¢**  
YARD

**SEE PENNEY'S TERRIFIC SELECTION OF YOUTHFUL WOOLENS**

SEW-SMART FABRICS FOR THE FASHION-WISE!  
Bonnie Bright PLAIDS in ORLON & WOOL... **3.98** YD.  
Machine Washable

**SANFORLAN 3.98** yd.

Solid colors . . . . . 3.79  
Big Selection of TWEEDS and FIBERENE WOOL SUITING **3.98** yd.



**SPECIAL PURCHASE OF BETTER WOOLENS . . . SENSATIONALLY PRICED!**

Bright vibrant color combinations you'll love . . . plaids, tweeds, stripes and plains inspire you to sew a well tailored casual dress, a trim skirt or jacket! All at a terrific savings to you at this special Penney low, low price, only . . . . .

**2.77**  
YARD

**NEED A NOTION?**

Penney's has every notion you'll need . . . everything from buttons to bows . . . scissors to seam bindings! Find them all at Penney's for less!



**GRIFFIN CUTLERY**

America's top-quality cutlery in a wide selection of sizes. **\$2.00 and \$3.00**



**Talon Magic-Tab Skirt Zipper.** White, pastels, brights. 7-in. size.

**30¢ each**



**Coats & Clark's "O.N.T." mercerized dressmaker's thread.** 400 yard spool.

**25¢ each**



**Bias tape, single or double fold.** 4 yard pieces.

**8¢ each**



**Dressmaker Pins of rust-proof brass.** 500 pins to a box.

**39¢ each**

**TIPS TO WOMEN WHO SEW:**

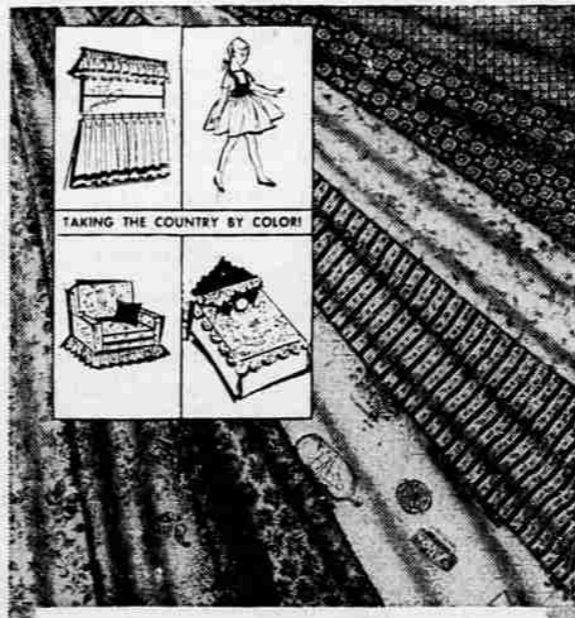
Find gay embroidery trims and appliques to point up your new clothes and perk up your old! Shop Penney's complete Notion Department today and save!



**Go-together plaids 'n' solids! IRIDESCENT SUITING**

Sewing for fall? Do it up handsomely in Penney's Iridescent Suiting, a hand-washable blend of acetate and rayon with a soft flannel "hand." Crease-resistant checks, plaids, solids! 45 inches wide.

**1.79**  
Yard



**COLORFUL NEW PRINTS in Penney's Rondo\* Percalé**

Rich Paisleys! Neat Foulards! Conversation Prints! Irresistible Juveniles! Penney's exclusive prints have been designed with all the family in mind! Fine, high-count percale machine washes to perfection!

**39¢**  
Yard



**Soft as down . . . light as a cloud! PENNEY'S FLANNELETTE**

Lots of fun-to-sew Penney prints for family sleepwear; lots of color-bright solids, too! Cotton flannel offers lightweight warmth, caring comfort! Sanforized\*, machine washable!

**49¢**  
Yard

**"OIL TO BURN"**

"There's No Fuel Like An Oil Fuel"



CLEAN — SAFE — AUTOMATIC  
S&H Green Stamps, Too  
Distributor

**MEDFORD FUEL CO.**

Telephone 2-2111

Court and McAndrews