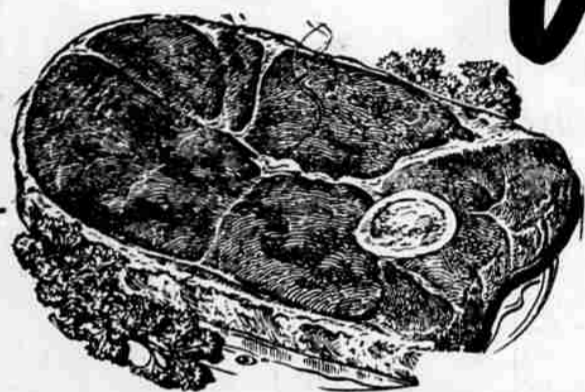


Safeway Reduces Beef Prices!



"USDA CHOICE" BEEF Round Steak

Pan-fried round steak is an all-time favorite. And, you'll find thick-cut round steak at Safeway that is perfect for swissing. Choose from a whole or a half bone-in steak.

Was 93^c lb.
NOW only 89^c lb.



"USDA CHOICE" BEEF T-Bone Steak

Look at the trim! See the generous amount of tender, juicy meat you get on a Safeway T-Bone, the bare minimum of bone, fat and waste. Here is real value . . . wonderful, WONDERFUL eating!

Was \$1²⁹ lb.
NOW only 99^c lb.

NOW! You can enjoy uniformly aged "USDA CHOICE" beef from Safeway at prices you would pay for ordinary beef

Here's the finest beef in town! Every cut of this "USDA CHOICE" beef has been scientifically aged by Safeway just the right number of days to bring out peak tenderness and flavor. Safeway meat men trim off all excess bone, fat and waste before weighing your purchase to make sure you get a maximum of good-eating meat for your money.

Yes, Safeway starts with fine beef . . . makes it even better! And this is why Safeway can say, "Buy ANY cut of meat at Safeway. Cook it by your favorite method. Try it. If you are not pleased 100%, Safeway will give you back every penny . . . without return of the meat." Try this fine Safeway beef today at these money-saving lower prices.

"U.S. CHOICE" BEEF RUMP ROAST

Here is a wonderful Sunday dinner oven roast that's easy to carve, tender and juicy through and through.

Was 85c Lb.

NOW only 79^c lb.

- Boneless Top Sirloin Steak
- Standing Rib Roast
- Beef Chuck Pot Roast Blade Cut
- Beef Chuck Pot Roast Arm Cut

WAS	NOW
\$1 ⁴⁹ lb.	\$1 ²⁹ lb.
93 ^c lb.	79 ^c lb.
53 ^c lb.	49 ^c lb.
65 ^c lb.	59 ^c lb.

"U.S. CHOICE" BEEF CUBE STEAKS

Made from choice beef rounds, sirloin tips. Here's grand eating any time. And just look at Safeway's new low price!

Were 1.19 Lb.

NOW only 99^c lb.

SPECIAL PURCHASE EVENT! USDA GRADE "GOOD" LOCKER BEEF

Front Quarter	125 to 175 Lbs.	Lb.	39 ^c
Hind Quarter	120 to 160 Lbs.	Lb.	55 ^c
Full sides	225 to 300 Lbs.	Lb.	45 ^c
PRIMAL CUTS OF "USDA CHOICE" BEEF			
Square-Cut Chuck	70 to 90 lbs.	lb.	45 ^c
Full Beef Round	70 to 80 lbs.	lb.	65 ^c
Beef Plate	18 to 25 lbs. Includes Plate Boiling Beef & Fancy Short Ribs	lb.	25 ^c
CUT AND WRAPPED FOR YOUR FREEZER AT NO EXTRA COST			

- Sirloin Tip Oven Roast
- Boneless Stew Beef
- Boneless Sirloin Tip Steak
- 100% Pure Ground Beef

WAS	NOW
\$1 ⁰⁵ lb.	98 ^c lb.
79 ^c lb.	69 ^c lb.
\$1 ¹⁵ lb.	98 ^c lb.
45 ^c lb.	39 ^c lb.

All prices in this advertisement are now in effect through October 17 at the Safeway store in your neighborhood.

Shop  SAFEWAY