

Registration Places Are Listed in County

Saturday, Oct. 6, will be the final day voters may register for the Nov. 6 general election, Mrs. Bereth P. Hopkins, county clerk, reminded residents today.

Fire halls and the Jackson county courthouse will remain open until 8 p.m. Saturday. A voter must re-register if he has not voted in one election in the past two years; if he has moved within his precinct or into another precinct or to another county in the state; if the name has been changed by marriage; or if he desires to change from one political party to another.

According to Oregon law, it is necessary to live in the state for a minimum of six months in order to be eligible to vote.

Registrars Listed
Following is a list of registrars and locations in Jackson county where voters may register:

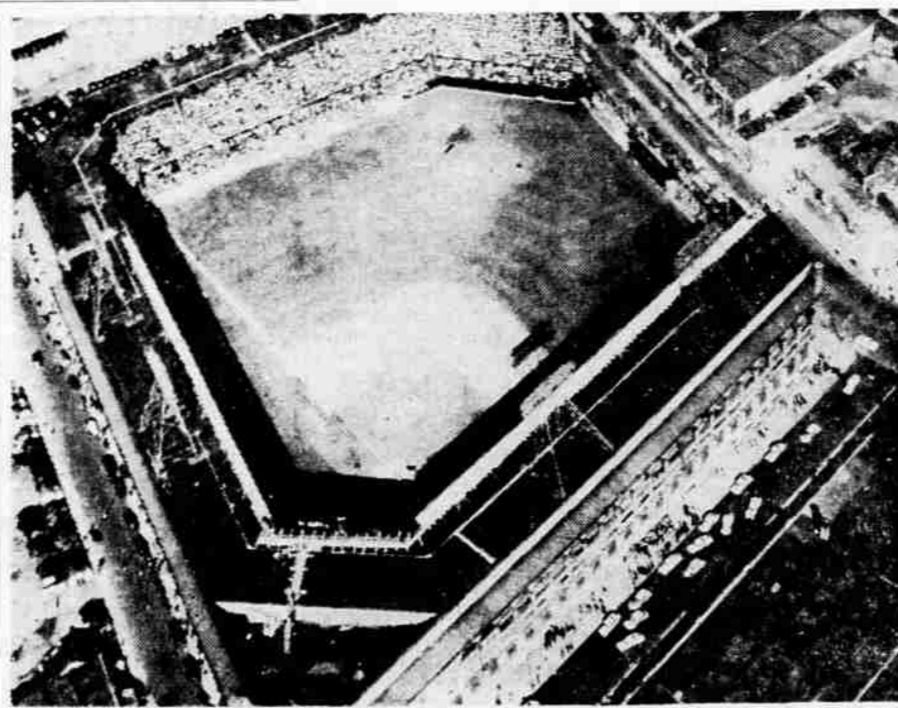
Precincts 1-3 inclusive, Velma Jones, Chamber of Commerce, Ashland; 1-13 inclusive, Barbara Feinstein, Singmaster and Jones office, Ashland; 1-17 inclusive, Roger F. Rath, 1450 Siskiyou blvd., Ashland; 17, Grace T. Bostwick, Mountain View camp, Lincoln; 20, Clara V. Edmondson, residence, Butte Falls; 21, 22, Thelma M. Short, water district office, Eagle Point; 23, Doris Boothby, Frank Boothby, Boothby's market, Prospect; 24, 25, 26, Evelyn R. Stalker, Wendell Stalker, Cove Drug store, Shady Cove.
Precincts 28-25 inclusive, M. A. Moulton, Capt. Vernon Ritchie, main fire hall, Medford; 30-37 inclusive, George Shreve, Capt. Dale Davis, east side fire hall, Medford; 28-28 inclusive, Wesley Coleman, Charles Hobbs,

LeRoy Williams, west side fire hall, Medford; 59, 60, 61, Margaret J. Truax, Truax market, Phoenix; 14, 16, 63, Albert Seiber, Farmer's market, Talent; 64, Geraldine L. Maxon, M&M store, South Stage rd., and Griffin Creek rd., Griffin Creek; 65, 66, 67, 69, Ella E. Adkin's Market, Ross lane, Medford; 70, 71, 71A, 69, Wilma Grisham, Nate Grisham, rural fire station, Central Point.

Precincts 28, 28A, 29, 29A, 69, 70, 71, 71A, 72, 73, 73A, 76, 79, Dawn Bell, Margaret Naples, M. F. Naples, M&M Realty, Central Point; 73, William C. Hurm, Camp White; 73A, Ray M. Wyatt, Table Rock store; 74, 75, 76, 77, 77A, 79, 80, Ladene Chiamulera, Rogue River Feed store, Rogue River.

Precincts 78, 79, Dale S. Collins, office of Justice of Peace above post office, Gold Hill, and Don Morrow, Morrow Hardware store, Gold Hill; 81, 82, 83, 84, Barbara Christianson, Buford Christianson, Beverly Montgomery, Chris Drugs Jacksonville; 80, Lesty Ellen Miller residence, Footh Creek; 81, 82, 83, 84, Bruce Braaton, Hunter and Best mill, Ruch.

Precincts 81, 82, 83, 84, Dorothy M. Bird, Bird's Riverview market, Applegate; 1-84, inclusive, Pauline N. LaPlane, Labor Temple, Medford; 58, 64, 68, Lula G. Watson, 1638 Stewart ave., Medford.
All precincts, Mrs. Mary G. Kelly, 906 West 4th st., Medford; all precincts, Mrs. Kathleen Bash, 1325 Bundy ave., Medford; all precincts, Mrs. Donna Straus, Sams Valley; all precincts, Jackson county courthouse, elections department.



PLAY BALL—A bird's eye view of Ebbets Field in Brooklyn, home field of the Dodgers, where the 1956 World Series starts off with the odd-makers establishing the New York Yankees as 5-7 favorites over the Dodgers.

Pear Prices

Portland — (U.P.) — Wholesale pear market; Oregon lugs 40 lb. 2.25-2.50; Bosc 1.50-1.75.

PORTLAND PRODUCE

Portland — (U.P.) — Eggs — To retailers: Grade AA large, 37-39c; A large 35-36c; A medium, 32-34c; A medium 40-44c. A small, 25c; carton, no charge to 3 additional.
To retailers: AA grade prints, 66c; B prints, 66c-69c; C prints, 65c; D prints, 64c.
Cheese — Medium cured, to retailers: A grade cheddar, single daisies, 44-45c; 5-lb. loaves, 30-36c; processed American cheese, 5-10 lb. loaf, 41-44c.

FAIRM MARKET

Some Washington russet potatoes sold to a new seasonal low of \$1.80 to wholesalers in volume lots today; most cauliflower sales to wholesalers were below \$2 a lettuce crate mark for untrimmed No. 1 heads.

Poultry, Rabbits

Live Chickens — To growers (No. 1 quality, f.o.b. Portland): Fryers, 21-24 lb. live weight, 27-28c; 16-20 lb. range, heavy hens, 3 lbs. up, not enough trading for Portland price, at country, 12-13c; old roosters, 9-10c.
Dressed Chickens — No. 1 grade dressed to retailers, Fryer, whole drawn, 33-38c; cut up, 40-44c; hens light type, cut up 34-37c, whole drawn, 37-40c.
Turkeys — To producers: Fryer turkeys, live weight, 27-28c; 16-20 lb. range, heavy hens, mostly 34-35c; lb. on eviscerated basis; young toms, 29-32c, depending on weight.
Rabbits — Average to growers f.o.b. killing plants: Live white 3 1/2-4 1/2 lbs., f.o.b. dressing plants, 20-22c; colored pelt, 4c under; old does, 10-12c; a few higher. Fresh killed fryers to retailers, 30-32c; cut up, 26-28c.

PORTLAND LIVESTOCK

Portland — (U.P.) — Cattle for week 4183; Choice 873 lb. fed steers 25c low choice to 1223 lb. 23-24; good 21-35; good-low choice heifers 20-21-25; canner-cutter, cows mostly 7-8-9-10; utility 9-10-11-12; utility bulls 14-15.
Calves for week 675; Choice vealers 18-20; good 16-18.
Hogs for week 2300; No. 1 and 2 butchers 18-23 lb. 18-19-19; late 18-20 down; No. 3 down to 17 late 18-19.
Sheep for week 4200; Choice 106 lb. range lambs 20-50; other choice lambs 19-23-1975; early good-choice 17-18-20; good-choice feeder lambs 15-16-50; ewes 2-4-20.

PORTLAND HAY, GRAIN

Portland — (U.P.) — Wholesale hay prices: New crop No. 2 green alfalfa baled f.o.b. Portland, \$32-35.
Wholesale prices as reported by the USDA market news service: Wheat No. 2 soft white, \$73.50 ton; No. 2 white oats, 38-lb. test, Coast delivery, \$32-30; No. 2 Valley, white oats \$31.50 ton; soybean meal, \$76.50 ton f.o.b. Portland; barley, No. 2 Western Coast delivery, \$48-50-49 ton; standard millrun, \$38-39 ton, Portland; No. 3 Yellow Corn, Eastern shipments f.o.b. Portland, \$53-57.

Daily Weather Report

Medford and vicinity: Fair and warm through Saturday afternoon. Considerable cloudiness Saturday night and Sunday with chance of showers. Low tonight 42. High Saturday 78.
Western Oregon: Fair tonight with patches of late night and early morning fog. Mostly sunny Saturday. Low tonight, 33-45. High Saturday, 63-73.
Northern California: Mostly fair tonight and Saturday. Slightly warmer.
LOCAL DATA
Temperature: Mean yesterday 61; above normal 2. Record high this date 92 in 1913. Precipitation: 24 hours to midnight 0 in. Midnight to 10 a.m. 0 in. Total this month 0 in., 20 in. below normal. Total since Sept. 1 54 in., 21 in. below normal.
Humidity: Lowest yesterday 34%; highest this a.m. 92%.

CONDITION FAIR

Portland — (U.P.) — The condition of Sid Smith, 32-year-old Oregon state policeman wounded six times by his wife Wednesday, was described as "fair" today. Smith's wife, Betty, 25, took her own life, police said.

PLANE EXPLODES

Manila — (U.P.) — A Philippine Air Force light plane exploded at sea off the southern Philippines Wednesday, killing a Filipino general and three other persons, the Philippine Air Force announced Thursday night.

Why Suffer Longer?

When Others Fail COME TO US—ACT NOW!
Our Nature's HERB remedies will help you to regain your good health. Our remedies have been successful in aiding the sick all over the state for over 18 years.

CHARLIE CHAN

OFFICE OPEN SUNDAYS ONLY 12 NOON TO 4 P.M.
CHINESE MEDICINE & HERB CO.
624 S. Riverside—Medford

HYPNOTISM

Has been successfully used in muscular rheumatism, constipation, menstrual disturbances, migraine headache, insomnia, stuttering, etc. For information regarding Hypnotism see

W. L. WHELDEN

336 S. Riverside, Medford, Ore.

Sex of Unborn Babies Said Determined Early

London — (U.P.) — Three Israeli doctors said today the sex of unborn babies can be determined "accurately" as early as the third month of pregnancy and perhaps even earlier.

They said in an article in the British Medical Journal that sex can be determined by studying amniotic fluid from the womb.

The article was written by Drs. Leo Sachs and Mathilde Danon of the Weizmann Institute of Science at Rehoboth and Dr. David Serr of the Rothschild-Hadassah University hospital in Jerusalem.

Red Dean Says Trade Embargo 'Must Go'

Tokyo — (U.P.) — Dr. Hewlett Johnson, the controversial Red Dean of Canterbury, wrote in an article in the Peiping People's Daily that the trade embargo against Communist China "must go."

By removing the embargo, Red China could get items it urgently needs and Britain would gain a stable market "with an ever-open door," Johnson wrote.

James Buchanan Dies Of Heart Attack

James Harvey Buchannan, 33, of 910 King st., Medford, died apparently of a heart attack yesterday. He was found lying in the seat of a Pacific Fruit and Produce company truck parked off Highway 66 late yesterday, according to state police.

State police said when found, Buchanan had his coat under his head for a pillow. He was discovered by a weighmaster.

The weighmaster told police he saw the truck parked along the highway about 9 a.m. yesterday, but did not think much about it. He told police that he noticed the truck again when he returned last night, and notified the police.

Police said Buchanan was en route to Tutelake to pick up a load of potatoes. He left Medford early yesterday morning and was not heard from until found, they said.

He was a former Medford policeman. Conger-Morris Funeral home is in charge of arrangements.

Read and Use Classified Ads

Stanford 'Students' Hear Aeronautical Lectures

Stanford, Calif. — (U.P.) — The classroom walls were studded with science display geared to the mind of a fifth-grader, but the "pupils" were listening to a lecture on aeronautical research by a specialist in the field.

The setting was Stanford University and the students were actually high school teachers, recipients of Shell Merit Fellowships in a "back-to-summer school" plan at Cornell University and Stanford.

The aeronautical lecture, conducted in a hall usually devoted to instruction of prospective elementary teachers, was one of a series in the Shell program designed to motivate high school students, through their teachers, to enter the fields of science, mathematics, and engineering.

When Shell Companies Foundation, Inc., announced its fellowship program last spring, both Cornell and Stanford were flooded with applications. According to Dr. R. Hurd, coordinator of the California project, several thousand high school teachers applied for the 30 Stanford grants and the 30 at Cornell.

Fellowship winners met minimum requirements by having taught physics, chemistry, and/or mathematics for five years in their high schools throughout the United States.

Notices Should Be Filed for Hearing

Persons who desire to be heard at the public hearing on bureau of land management and forest service proposals to withdraw 23,356.67 acres along Rogue river in Jackson and Josephine counties for use as recreational areas should notify Virgil T. Heath, state supervisor, bureau of land management, Portland.

The hearing will be held at 9 a.m. Tuesday, Nov. 20, in the Josephine county courthouse in Grants Pass.

Missing Hunter Found Southwest of Bend

Bend — (U.P.) — Charles Pike, 20-year-old deer hunter from Bend, was located yesterday after being reported missing since Monday while hunting some 15 miles southwest of here. A light plane spotted Pike waving his arms for attention after smoke was sighted near Mud and Elks lakes.

There are about seven million farm dwellings in the U. S.



The Children's Theatre of the West Presents "JOHNNY APPLESEED" A Musical Play Produced for Children Music! Fun! Drama! Mystery! Craterian Theatre TUESDAY - Oct. 9 Two Matinees: 1:45 p.m. - 3:30 p.m. Tickets Available thru Public Schools, Monday and Tuesday Children 35c - Adults 50c Scholarship Fund Benefit Show - Sponsored by Medford Branch American Assoc. of University of Women

BIG 1/2 SALE Double-Cola for only 1c with purchase of 6-bottle carton at regular price (plus deposit on bottles) This Week-end at Your Favorite Grocery Bottled by 7-Up Bottling Co., Medford

IT'S WORLD SERIES TIME! SO . . . From GENERAL ELECTRIC naturally THE NEWEST IDEA IN PORTABLE TV PRICED AS LOW AS \$8995 EASY TERMS Weighs Less Than 13 Pounds! BRINGS IN AS SHARP A PICTURE AS A CONSOLE . . . 40 SQ. IN. PICTURE GENERAL ELECTRIC You'll Always Be Glad You Bought a G-E From . . . HOME APPLIANCE COMPANY • 115 EAST MAIN STREET—MEDFORD • 115 EAST MAIN STREET—ASHLAND

Why Suffer Longer? When Others Fail COME TO US—ACT NOW! Our Nature's HERB remedies will help you to regain your good health. Our remedies have been successful in aiding the sick all over the state for over 18 years. Remedies for disorders, sinuses, heart, liver, stomach, gas and ulcers, constipation, piles, asthma, female complaints, kidney, bladder, blood, rheumatism, back and headaches. For Males, Females and Children. BRANCH OFFICES: Albany Salem Eugene North Bend CHARLIE CHAN OFFICE OPEN SUNDAYS ONLY 12 NOON TO 4 P.M. CHINESE MEDICINE & HERB CO. 624 S. Riverside—Medford