

New Lake Among Items of Talent Project

Emigrant Lake To Be Expanded; Other Items Are Listed

By ERIC ALLEN JR.
Mail Tribune Managing Editor

A new lake — five miles long, 80 feet deep, 2,500 acres in area — will start rising in the Cascades during the summer of 1959.

The northern tip of Howard Prairie lake will lap near the edge of the Dead Indian road, approximately half way between Ashland and Lake of the Woods.

The water to fill the lake will be diverted from a half-dozen or more high-country creeks, led by wintertime snow and spring and fall rains.

To the south and west, the water will flow through man-made canals, conduits and tunnels through the Cascade divide to the westward slope of the Green Springs pass. Here it will plunge down a 1,775-foot penstock into a powerhouse, where it will generate some 16,000 kilowatts of electricity.

From the powerhouse the water, supplemented by other creeks and canals, will flow into Emigrant lake reservoir — which will soon thereafter be increased over five times in its capacity. During the summer months, the water will be withdrawn from Emigrant and channeled through the canal systems of an expanded Talent Irrigation district, to water broad acres of fruit, vegetables, truck crops and forage fields. It will supplement the water supply of two other irrigation districts further north down the Bear Creek drainage.

This is the Talent project, culmination of years of work and effort and dreaming by men who see for the Rogue valley a prosperous future, with an economy based on fertile farms as well as lumber from the hills, on food processing and packaging plants as well as on the manufacture and remanufacture of wood products.

Two Main Pillars

Lumber and agriculture are the two main pillars supporting the Rogue valley. The third important pillar — recreation — will also receive an important and substantial added impetus from the completion of the project.

The magnitude of the multipurpose job can be told in several ways.

In terms of cash, it means the expenditure of about \$21 million for construction, paid by the federal government but to be repaid through water use charges and the sale of electric energy. It also means greater crop yields for during most years (the ample water supply of 1956 is an exception to the normal) there is not enough water to permit farmers to take full advantage of the productivity of the soil. More and better crops mean a more prosperous agricultural industry, and this in turn means more money for merchants of all types, and for service industries. It means a wider tax base for local government.

Natural Resources

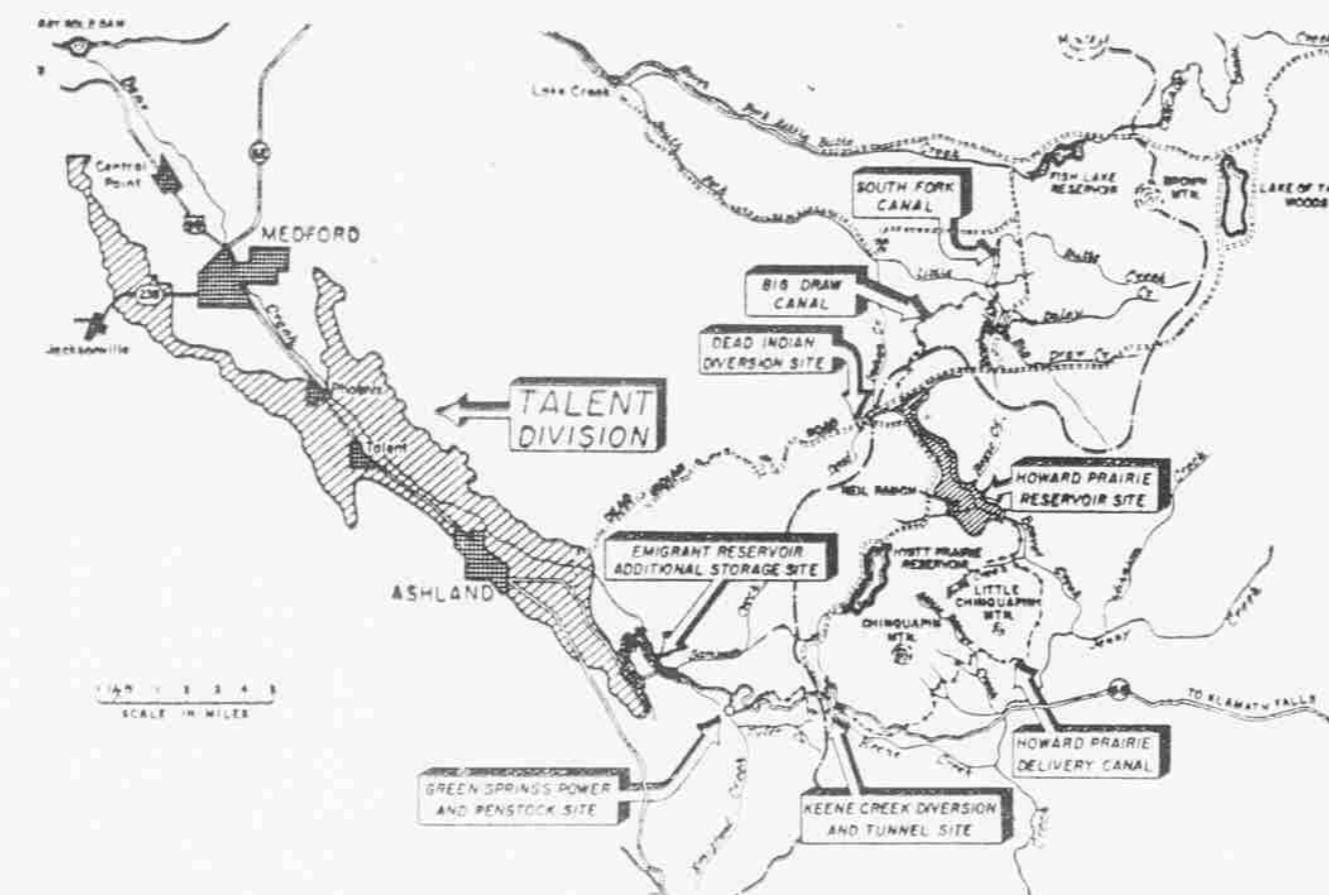
In terms of the conservation of natural resources, the project means the beneficial use and reuse of our most important single resource, water. It means better access to thousands of acres of good timber. It means that land now lying idle will support more people.

In terms of recreational benefits, it means a major new lake, approximately the size of Diamond lake, with its associated campgrounds, homesites and institutional camp areas; it means the opening up of a beautiful section of high mountain country; and the enlargement and extension of Emigrant lake already the mecca of hundreds of boat owners. It means the stabilization of Hyatt lake, which will be used only for water storage and will not, in ordinary years, be drawn down in the summer months, thus making it a better fishing lake. Water sports of all types will be given a chance for much greater development.

Initial Construction

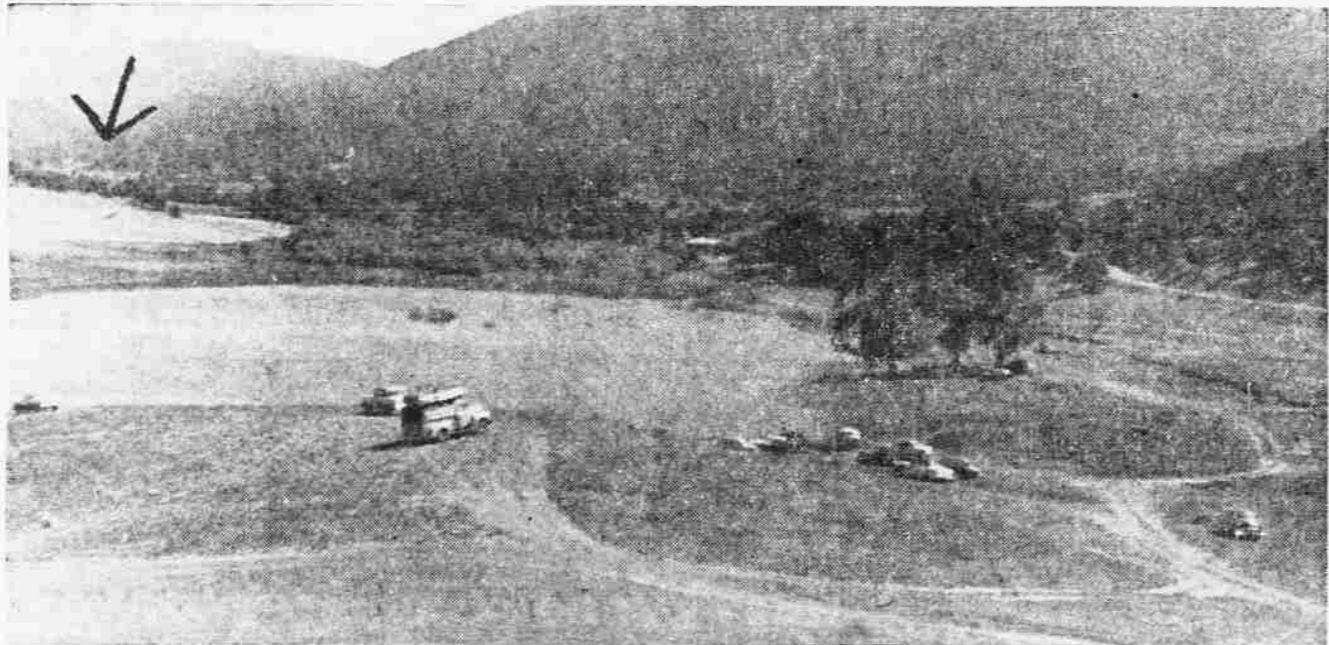
Initial construction on the Talent project is ready to begin. Bids on several phases of the overall development have been opened, and the low bidders are set to go. Congress has passed the initial \$2,400,000 appropriation, which is now available. Detailed plans and specifications are virtually completed for many of the items.

The one thing remaining to be done before construction can begin is an election for landowners in the Talent Irrigation district, at which time they will vote on a repayment contract between the district and the



SCOPE OF PROJECT—The scope of the Talent project, work on which will begin soon, is shown in the map-diagram above. At the left the shaded area shows the lands which will be brought under new or supplemental irrigation when it is completed, totaling more than 17,000 acres. In addition, about 9,000 acre feet of water will be made available for use in the Medford and Rogue River Valley Irrigation districts surrounding Medford, Central Point, and to the east. At the upper right can be seen Lake of the Woods. To the left of it is the South Fork canal, uppermost of the project works, which will collect water to channel it into the Big Draw canal and thence into the Howard Prairie reservoir. Water from the upper part of Dead Indian creek also will be used. The Howard Prairie Delivery canal, coming out of the reservoir and winding through the mountain to the south and west, will

pick up additional water from a number of creeks in that area. It will pass the Keen Creek diversion and through a tunnel under the Cascade divide (shown by the broken line) and through a channel and penstock to the Green Springs powerhouse. Part of this water will go into the Ashland lateral canal along the west side of the valley, but most of it will flow down Emigrant creek into Emigrant reservoir, which will be enlarged to hold a maximum of 45,000 acre-feet. This will be the chief immediate source of irrigation water during the summer. The reservoirs at Hyatt and Howard prairies will be drawn down mostly in the winter, to fill electric needs and to replenish the supply in Emigrant reservoir before the irrigation season. The north end of Howard Prairie reservoir will be adjacent to the present Dead Indian road.



"WING" DAMS NEEDED—This view shows the south end of Emigrant lake, which is the part with which most people are familiar. Highway 66 can be seen at the far right. The picture was taken from a spot just above the high water level to be created by the higher dam, and the arrow at the left, under Pilot rock, shows approximately where the south end of the

lake will be when full. Just to the right of this picture is a gap in the hills which will be filled when an earth-fill wing dam is built. The dam at present is below the proposed high water level. Another wing dam will be needed in the gap on the far side of the hill at the right. Highway 66 will have to be relocated before the enlarge lake rises.

bureau of reclamation. The proposed contract is in its final stages of negotiation, and the election has been called for Aug. 22.

Terms of the contract, somewhat similar to those approved by the Medford and Rogue River Valley Irrigation district landowners for rehabilitation of their canal systems, will include a 60-year repayment period, with the money to be raised by water-user fees, plus the sale of electric energy from the powerhouse.

Indicates Attitude

A majority of Talent district landowners have already indicated their favorable attitude toward the contract, and the election is expected to result in strong endorsement of the proposal.

There are 25 separate "program items" in the project. Of these, construction is expected to get under way immediately on four.

They are the Howard Prairie dam and reservoir, estimated to cost some \$2,000,000; the Big Draw collection canal, which will pick up water from several creeks on the west side of the Cascade divide and send them through a tunnel to the east side, estimated to cost about \$2,000,000; Howard Prairie delivery canal, which will carry the water from the reservoir south and west (picking up some additional creek water as it goes) and through a tunnel to the west side of the Cascade divide, estimated cost about \$4,000,000 and an interceptor ditch, \$112,000.

Earth Fill Dam

Howard Prairie reservoir will be dammed by an earth fill dam with a concrete core 90 feet high and 940 feet long at the crest. It will require about 185,000 cubic yards of earth fill and 204,000 cubic yards of rock fill. It will be equipped with outlet to the canal, and a spillway. The reservoir will have a live

capacity of 60,500 acre-feet of water, and dead storage of 1,500 acre feet. Heaviest draw-downs will be in the fall and winter, so generally it will be full or near-full during the summer recreation season.

One of the big jobs faced in preparation for filling the lake will be clearing the area to be inundated of trees, brush and the few structures existing. Some of this has already started, with contracts for clear-cut logging let by the bureau of land management. Stumps are limited to a 10-inch height, and the bureau of reclamation will also clear underbrush from below the highwater line.

Water Collection

The dam should be near completion by the summer of 1959, and collection of water is scheduled to begin then. The delivery canal is expected to be completed a year later.

Work on the Emigrant reservoir and dam is scheduled to start the summer of 1958, and will cost an estimated \$4,581,000, the most expensive single unit of the entire project.

Using the present concrete arch dam as a core, a big new earth fill dam will be constructed at the present site, and will raise the maximum level of the lake about 84 feet — enough to increase the capacity of the reservoir about 5 1/2 times, from 8,000 acre-feet to 45,000 acre-feet.

Size Increase

The size of the lake, also, will be increased many times. The larger area will require relocation of roads, moving of homes and some businesses and the clearing of considerable land. The present junction of Highway 66 and the old Pacific highway will be inundated, and arms of the lake will go far up Emigrant creek and Hill creek. Preliminary work on the Green Springs powerhouse will get under way next year, with full-scale construction the sum-



LAKE TO RISE FROM HERE—This view is taken from the top of the existing concrete arch dam which backs up Emigrant lake. The present dam will serve as the core of a new earth-fill dam, which will rise about 84 feet

higher and multiply the size of the lake about 5 1/2 times. When completed the high water mark will be nearly half way up the small hill shown on the far side of the lake.



HEAD OF THE NEW LAKE—Shown above is a stretch of the Dead Indian road about half-way between Lake of the Woods and Ashland where the upper end of the newly-created Howard Prairie lake will be. The waters of the lake are expected to come right

up to the right side of the road, and may possibly require a short section of the road shown to be relocated. This view looks approximately to the east. The lake will go south from this point, about five miles to the new dam.

Iowa Winner of Miss Universe Contest Touches Off Controversy

Long Beach, Calif. — (U.P.)—Carol Morris, daughter of an Iowa minister, won the Miss Universe title early Saturday and touched off a controversy that marred the contest.

The judges' selection was announced a few minutes after midnight and smoldering resentment of rejected Latin America contestants flared into open revolt.

All of the Latin American beauties were eliminated earlier from the five girl semi-finals, causing complaints that the judges were biased in favor of North American and European types.

They bore no personal grudge against the statuesque 20-year-old daughter of an Oltumwa minister, but they thought Latin Americans had been slighted because none from their ranks had won the contest in its five-year history.

Miss Brazil's Merit

Some of the Europeans sided with the Latin Americans. Iris Waller, Miss England, one of the semi-finalists, congratulated Miss Morris but later said she thought it "very odd that all Latin American girls were disqualified."

"I thought Miss Brazil especially deserved to be among the selected five semi-finalists," Miss Waller said.

Miss Israel, Sara Tal, who earlier had refused to pose with Miss Germany, thought at least one Latin American should have been in the semifinals.

The Latin Americans thought it was unfair that Americans had won the title in two of the last three contests.

Most of the foreign girls were good losers Friday night when Miss Morris, winner of the Miss Iowa and Miss USA titles, was picked from among five international finalists as the most beautiful girl in the world.

Miss Germany Second

There were happy congratulations for the Drake university coed from her runners-up, Miss Germany, Marina Orselch, 19; Miss Sweden, Ingrid Goude, 19; Miss England, Iris Waller, 21; and Miss Italy, Rosanna Galli, 21, who finished in that order in the finals.

But in the wings after the contest was over, much grumbling came from the Latin Americans. Maria Cardoso, Miss Brazil, declared:

"We all are disappointed. I am certain that among the Latin Americans among the 15 semi-finalists there was ample material for the final five.

"Miss Argentine, Miss Mexico and Miss Peru all were well qualified to get into this group," she added. "It didn't matter to

me whether I got in or not."

Judge Defends Choice

One of the nine judges, illustrator Alberto Varga, himself of Peruvian origin, emphatically denied that the judges had attended too lightly to their duties.

"It's one of the most thankless jobs in the world," he declared. "In fairness to my colleagues, I must insist that they did a most careful, conscientious job in accordance with their instructions.

The winner has dark brown hair, blue eyes and a fair complexion. She is five-feet, seven-inches tall, weighs 129 pounds and measures 36-25-36.

Miss Morris, a Drake university swimming champion, fainted after being declared the winner, but she later came on stage to receive her sash, crown and satin cape amid the cheering of the 4,000 spectators at Long Beach Municipal Auditorium.

Her mother and father, the Rev. Laverne Morris and his wife, Gertrude, were in the audience.

Housing costs for laying hens can be cut by increasing the number of birds per square foot of floor space. Floor areas can be reduced to 1 1/2 to 2 square feet per hen.

Ontario Man Fatally Injured in Accident

Ontario, Ore. — (U.P.)—Francis-Montiel Yebra, 24, of Ontario, was fatally injured 11 miles north of there Friday night in a one-car accident on Highway 30. He died yesterday morning in an Ontario hospital.

Riding with Yebra was Gregorio Hernandez, 48, also of Ontario. He threw himself on the floor boards and was not injured.

Police said Yebra's car went off the right side of the road and skidded for 138 feet in a ditch, then bounced back on the highway and rolled 210 feet before it stopped. Yebra was thrown from the car.

Washington — (U.P.)—A special postage stamp honoring the salmon industry may have its first day of sale in Seattle.

Amity, Ore. — (U.P.)—Fire leveled a farm dwelling here Thursday and left the Raymond Jones family of seven homeless.

EAGLES PICNIC
Sunday, July 22
ROGUE RIVER PARK

• Ladies, Please Bring Salad and Silver Service
• Sports Events For All Ages
FOR EAGLES AND FAMILIES ONLY!

MISS EASY VISION — WINNER!

WHEN YOU OWN

SHIRLEY SOTTERFIELD
702 N.W. Dimmick
Grants Pass, Oregon

Thanks to Crater Lions
ALL-BRIGHT TELEVISION CO. 1654 Orchard Home Drive, Medford, Ore.