

SPRING LAMB SALE

A Whole Trainload Purchased for This Event!

Aged For Flavor and Tenderness—Guaranteed Perfect Eating

Cut and Wrapped FREE!

Whole or Half **Lamb** **49**^c lb.

"USDA CHOICE" Lamb. Cut and wrapped by your Safeway meat man at no additional cost whatsoever.

other meat values

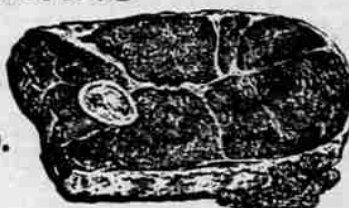
Sliced Bacon Morrell's Yorkshire lb. **49**^c
 Lunch Meat Somerset 8-oz. Sliced Pkg. **29**^c
 Whole Fryers Pan Ready lb. **45**^c
 Cut-up Fryers Plump Tender lb. **49**^c

Leg O'Lamb USDA Choice Grade, Tender and Flavorful lb. **69**^c
 Lamb Roast Choice Shoulder Blade Cut Plenty of Meat lb. **49**^c
 Lamb Chops Center Rib Chops Tender, Flavorful lb. **89**^c
 Shoulder Chops Blade Gut, Choice Lamb lb. **65**^c
 Loin Chops Small, Tender Chops, Perfect Eating lb. **1**⁰⁹
 Lamb Patties Boneless Lamb—A Grand Value lb. **69**^c
 Breast of Lamb Wonderful for Stew lb. **15**^c

USDA Choice Grade Beef **Round Steak** Aged for Flavor and Tenderness
GUARANTEED PERFECT EATING

There's perfect eating on its way from Safeway with this choice grade round steak, guaranteed to satisfy 100% or your money cheerfully refunded. It's aged too, for tenderness and flavor.

79^c lb.



Beef Pot Roast USDA Choice Grade Blade Arm Cut, lb. 55c Cut lb. **45**^c
 Beef Rump Roast USDA Choice Gr. Tender & Flavorful lb. **75**^c
 Boneless Steak USDA Choice Beef Boneless Top Round lb. **89**^c
 Boneless Sirloin USDA Choice Beef Boneless Top lb. **\$1.25**
 Beef Rib Roast Aged for Tenderness & Flavor by Safeway lb. **75**^c
 Boiling Beef USDA Choice—From the Same Beef as Our Steaks lb. **12**^c

Salad Dressing Duchess Brand Regular 57c Qt. **39**^c
 Dill Pickles Finest Zippy Brand Regular or Kosher Half Gallon **59**^c
 Minced Clams Sea Trader Brand 4 7½-oz. Tins **\$1.00**
 Grapefruit Highway Brand Broken Segments 7 No. 303 Cans **\$1.00**
 Apple Butter Shasta Brand, A Grand Value 28-oz. Jar **29**^c
 Graham Crackers 1-lb. Pkg. Pirates Gold Brand With Free 7-oz. Busy Baker Sodas Both **29**^c
 Roxbury Candy Gum Drops or Orange Slices 2-lb. Bag **39**^c

See Our Big 10¢ Display

HERE IS AN EXAMPLE OF OUR 10¢ FEATURES

SMITH BUTTER BEANS 300 Can
 HIGHWAY NEW POTATOES 300 Can
 STEINFELD SAUERKRAUT 10-oz. Can
 KIDNEY BEANS—Taste Tells 300 Can

10 for **\$1.00** Mix 'em up

CANNING SUPPLIES

JELLY GLASSES—squat & tall dozen 83c
 KERR LIDS—regular dozen 15c
 CERTO—pectin 8-oz. btl. 29c
 MCP PECTIN—powdered 3½-oz. pkg. 2/29c
 SURE JELL—powdered pectin 2½-oz. pkg. 2/29c
 FREZE BOXES—Kordite, 5 pt. size 25 boxes 75c
 FREZE BOXES—Kordite, 5 qt. size 25 boxes 98c
 VAPO CAN LIDS—plastic pkg. of 10 59c
 FREEZER JARS—Ball, pints dozen \$1.45
 FREEZER JARS—Ball, 22-oz. size dozen \$1.69
 WHITE SATIN—sugar 25-lb. sack \$2.57
 CANE SUGAR—Candi Cane 10-lb. pkg. \$1.04

Now! A Very Special Price



LALANI
 Fancy Hawaiian
Pineapple Juice

4 46-oz. Cans **\$1.00**

MIXED COOKIES **49**^c
MELROSE, Kitchen-fresh 1½ Pound Bag

PURE **EMPRESS PRESERVES**

Raspberry Preserves Reg. 1.25 4-lb. Tin **\$1.00**
 Pure Plum Preserves 4-lb. Tin **89**^c

IT'S CANNING TIME AT SAFEWAY!

The Season's Finest, Bursting with Flavor—Can NOW!



Elberta Freestone

Peaches

By the Pound 17c **\$2.39**
 21-lb. Lug

Apricots Yakima—for Canning By the Lb. 19c 12-lb. Flat **\$1.79**

Cantaloupe Vine-ripened lb. **10**^c
 Watermelon By the Pc. lb. 5½ Whole lb. **5**^c
 Bananas Golden Yellow lb. **2/35**^c
 Oranges Valencias 5-lb. Bag **49**^c
 Lemons full of Juice lb. **19**^c
 Seedless Grapes Sugar Sweet lb. **29**^c
 Santa Rosa Plums large ripe lb. **19**^c
 Persian Melons or ripe Crenshaws lb. **17**^c
 Honeydew melons A taste delight lb. **14**^c
 Cucumbers for Summer Salads lb. **10**^c
 Green Beans Local Grown lb. **15**^c
 Crisp Carrots **3 lbs. 29**^c

Produce Prices Effective Thru Sunday July 15th. only

SAFEWAY