

# Safeway Salutes Oregon Products!

What Oregon Makes . . . Makes Oregon Greater!

Safeway points with pride to this representative selection of the hundreds of Oregon items you can choose from at the Safeway store in your neighborhood. Safeway is indeed proud to be a link in the chain that provides valued payrolls for Oregon and fine foods for Oregon and the Nation.

## SAFEWAY... A Major Factor IN The Development of Markets for Oregon Products

As a food retailer doing business in 24 states, the District of Columbia and 5 Canadian Provinces, Safeway has played a dominant role in spreading the fame of Oregon products from coast to coast. For many families, the first contact with our State is through an Oregon food product purchased at their neighborhood Safeway store.

For example, Safeway is Oregon's best agricultural customer. Last season, the 1431 rail cars of Oregon potatoes purchased by Safeway amounted to 11.38% of the total shipments for the same period. Safeway bought 70 cars of local peaches, 45 cars of fresh corn. The largest shipment of fresh peas ever to leave Pendleton was consigned to Safeway.

Last year's pack of Blue Lake variety green beans for Safeway, alone, amounted to 145,693 cases. Other canners are kept humming processing other vegetables, fruits, meats and seafoods for Safeway's vast market. Wherever you find a Safeway store, it's almost a certainty you'll find Oregon products.

### Today . . . Even Greater Marketing Opportunities For Oregon Products Through An Ever Expanding Safeway

Safeway Stores, Incorporated, is expanding — building modern, new stores to serve a constantly increasing population. For Oregon products this means new horizons, an opportunity for continued growth and prosperity. We place an immeasurable value on these fine products which have helped us bring the best to America's tables.

<b>HOOD RIVER APPLESAUCE</b>	Made from Finest Quality Apples	No. 303 Can	<b>25<sup>c</sup></b>
<b>TILLAMOOK CHEESE</b>	Flavorful, Mild Cheddar	1-lb. Pkg.	<b>75<sup>c</sup></b>
<b>FROZEN STRAWBERRIES</b>	Bel-air Frozen Premium Quality	10-oz. Pkg.	<b>27<sup>c</sup></b>
<b>BUMBLE BEE TUNA</b>	Nationally Famous Packed in Astoria	No. 1/2 Can	<b>29<sup>c</sup></b>
<b>WESTFAIR APPLE JUICE</b>	Finest Quality	Quart Bottle	<b>25<sup>c</sup></b>
<b>CUT GREEN BEANS</b>	Gardenside Brand Grown in Oregon	No. 303 Can	<b>2/25<sup>c</sup></b>
<b>LUCERNE 3.8 MILK</b>	Regular or Homogenized	Qt. Ctn. / Half Gal.	<b>24<sup>c</sup> / 47<sup>c</sup></b>

### Cottage Cheese

Blossom Time Brand  
Full Pint **29<sup>c</sup>**

### Potato Chips

Blue Bell 3 3/4-oz. Pkg. **25<sup>c</sup>**  
Nalley's 8-1/2-oz. Foil Pack **59<sup>c</sup>**

### Zee Napkins

White, Paper-Wrapped  
Pkg. of 80's **2/25<sup>c</sup>**

- Borena—soap powder—23-oz. pkg. 33c
- Nu Bora—soap powder—giant size 69c
- Zee Tissues—for bathroom, 4 roll pk. 35c
- Scott Tissues—fine textured—reg. roll 2/27c
- Wax Paper—Zee brand, 100 ft. roll 20c
- Brooms—Brown Beauty—each 1.89
- Walnuts—medium size—1-lb. pkg. 55c
- Spanish Peanuts—Hoody's 7 1/2-oz. size 29c
- Frit-lets, Porters, wide, 1-lb. pkg. 33c
- Sunrise Macaroni or Spaghetti—2-lb. pkg. 37c
- Margarine—Dutch Maid, 1-lb. pkg. 27c
- Playfair—Dog Food—15-oz. can 3/27c
- Friskies—Dog Food—15-oz. can 15c
- Begmore Dog Food—can 15c
- Dog Food, Super Meat—5-lb. size 79c
- Cherub Milk, Evaporated—tall can 3/40c
- Borden Milk—canned—tall can 3/43c
- Cake Flour—Swansdown—2 1/2-lb. pkg. 37c
- Shredded Wheat, NBC—12-oz. pkg. 19c
- Popped Wheat—Nu Vita, 6-oz. pkg. 14c
- Zoom—Fisher's cereal, 1-lb. pkg. 27c
- Dill Pickles—Columbia Old Fashioned—24-oz. jar 37c
- Zippy Dills—whole pickles—16-oz. jar 29c
- Sweet Pickles—Zippy, whole—22-oz. jar 53c
- Sweet Pickles, Steinfeld—half gal. 99c
- Horseradish—Blue Bell—4-oz. jar 21c
- Hot Mustard—Old Spice—3-oz. jar 15c
- Blackberry Preserves—O'Connell's—12-oz. jar 39c
- Fresh Bread—Skylark Potato—1-lb. loaf 30c
- Fresh Eggs—AA large—dozen 58c
- Sliced Apples—Lakemead—No. 2 can 24c
- Applesauce—Highway, No. 303 can 15c

- Pear Halves—Harper House—No. 2 1/2 can 39c
- Peaches—Lady Elberta—No. 2 1/2 can 39c
- Loganberries—Oregon, 11-oz. size 19c
- Maraschino Cherries—Empress—4-oz. jar 17c
- Cherries—Honeybird—No. 2 can 25c
- Royal Ann Cherries—Del Monte—No. 303 gl. 35c
- Sweet Cherries—Oregon, dark—11-oz. can 19c
- Plums—Oregon—11-oz. can 11c
- Fancy Plums—Monica—No. 2 1/2 can 23c
- Cranberry Jelly—Ocean Spray—No. 300 can 22c
- Rhubarb—Oregon—No. 303 can 19c
- Cut Beans—Santiam—No. 303 can 21c
- Green Beans—Briargate, cut—No. 303 can 19c
- Lima Beans—Taste Tells, dry—No. 300 can 11c

- Sliced Beets—Garnet—No. 303 can 15c
- Pickled Beets—Eugene, No. 303 can 18c
- Cream Corn—Gardenside—No. 303 can 2/29c
- Del Monte Corn—cream style—No. 303 can 18c
- Hominy—Banjo Gold—No. 300 can 11c
- Mushrooms—Shady Oak, pcs. and stems—4-oz. can 32c
- Sweet Peas—Sugar Belle—No. 303 can 19c
- Fancy Pumpkin—Moonbeam—No. 2 1/2 can 16c
- Sauerkraut Steinfeld—11-oz. can 11c
- Sauerkraut Stonecrop—No. 2 1/2 can 18c
- Pork & Beans—Taste Tells—No. 300 can 11c
- Kidney Beans—Taste Tells—No. 300 can 11c
- Pinto Beans—Taste Tells—No. 300 can 11c

- Chili Beans—Smith brand—No. 300 can 11c
- Chili Con Carne—Haley's—22-oz. can 39c
- Butter Beans—Smith brand—No. 300 can 11c
- French Style Beans—Bel-air—10-oz. pkg. 19c
- Mixed Vegetables—Bel-air, frozen—10-oz. pkg. 19c
- Sweet Peas—Bel-air, frozen—10-oz. pkg. 20c
- Potato Patties—Bel-air, frozen—12-oz. pkg. 19c
- French Fries—Bel-air, frozen—9-oz. pkg. 2/33c
- Cheddar Cheese—Chatham, block—1-lb. 69c
- Fresh Butter Shady Lane—1-lb. 69c
- Nob Hill Coffee—Aromatic Flavor—1-lb. bag 98c

- Airway Coffee—Mild and mellow—1-lb. bag 91c
- Folgers Coffee—Full flavor—1-lb. can \$1.05
- Tokay Wine—Paradise—fifth 59c
- Black Muscat Wine—Cal-Ore—fifth 59c
- Loganberry Wine—Honeywood—fifth 98c
- Cragmont Beverages—12 flavors plus bottle deposit—32-oz. 2/35c
- Coca Cola—6-oz. bottles—6-pack 45c
- Pepsi-Cola—12-oz. btl.—6-pack 51c
- 7-Up—7-oz. btl.—6-pack 45c
- Root Beer—Hires, 12-oz.—6-pack 51c
- Blitz Beer—12-oz. cans. 6 can pack 1.15
- Hydrox Cookies—Sunshine—1-lb. pkg. 39c
- Krispy Crackers—fresh—1-lb. pkg. 29c
- Soda Crackers—Snowflake—1-lb. pkg. 29c
- Corn Kurls—Hood's—pkg. 19c

NEW! Exclusively at Safeway. Skylark

### STONERIDGE FARM STONE BREAD

Just like home made! Thin sliced for perfect toasting. White or whole wheat. Loaf **25<sup>c</sup>**



### SAFEWAY FEATURES "USDA CHOICE" OREGON BEEF

Uniformly "Aged" For Peak Tenderness And Flavor At Our Own Central Meat Plant. Trimmed Before Weighing Of Excess Fat, Bone And Waste. Backed By Our Money Back Guarantee of Satisfaction

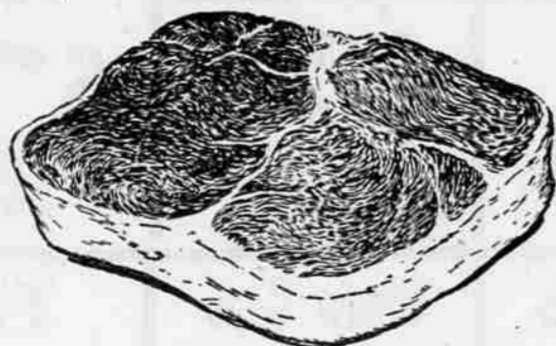
## SWISS STEAK

Easy on the budget, tender and delicious down to the last savory forkfull

**75<sup>c</sup>** Lb.

## ROUND STEAK

"USDA CHOICE" BEEF  
**Lb. 89<sup>c</sup>**



The "Eye" Of The Rib Roast "USDA CHOICE"

**Spencer Steaks** lb. **1<sup>29</sup>**

"USDA" CHOICE" Boneless Bottom **Round Steak** lb. **85<sup>c</sup>**

Ground Fresh Daily. 100% Pure **Ground Beef** lb. **39<sup>c</sup>**

Sliced Just The Way You Like It! **Pork Liver** lb. **29<sup>c</sup>**

## NOW IS THE TIME FOR HOME CANNING

WHITE SATIN  
**SUGAR**  
Oregon's Own and Only  
10-lb. Bag | 25-lb. Bag  
**\$1<sup>04</sup> | \$2<sup>57</sup>**

- Mason Jars—Kerr, reg. qts.—doz. 1.45
- Kerr Jars, Wide mouth, qts.—doz. 1.65
- Kerr Lids—regular—dozen 15c
- Jelly Glasses—half pints—dozen 83c
- Clamps—Kerr, economy—dozen 25c
- Freezer Jars—Ball—dozen 1.69
- MCP Pectin—Powdered—3 1/2-oz. pkg. 2/29c
- Sure-Jell—pectin—2 1/2-oz. pkg. 2/29c
- Sakrin—Pearson liquid—34 cc 69c

### These Wonderfully Fresh Fruits Are Ready At These Peak-of-Season "LOW" Prices!

Tree-ripened **APRICOTS** now pouring in at Safeway

Can them now and enjoy the luscious flavor of these Yakima beauties the year around. Safeway has the finest!  
**12-lb. Flat \$1.98**  
**19<sup>c</sup>** LB.

**Elberta Peaches**  
Picked off the tree at their peak of flavor goodness.  
21-lb. Lug **\$2<sup>39</sup>**  
17<sup>c</sup> lb.

**Raspberries**  
These berries are the seasons finest for eating  
**Cup 29<sup>c</sup>**

**Cantaloupe** You'll Love their Wonderful Flavor lb. **8 1/2<sup>c</sup>**  
**Sweet Grape** Seedless, Thompson's lb. **29<sup>c</sup>**  
**Bananas** Fancy Quality Golden Beauties lb. **19<sup>c</sup>**  
**Santa Rosa Plums** lb. **19<sup>c</sup>**

**WATERMELONS**  
Thumpin Ripe  
**Sliced Melons** lb. **5<sup>c</sup>**  
lb. 5 1/2<sup>c</sup>

Prices in this ad are in effect at Safeway in Medford through Tuesday, July 10. We reserve the right to limit. No sales to dealers.

