

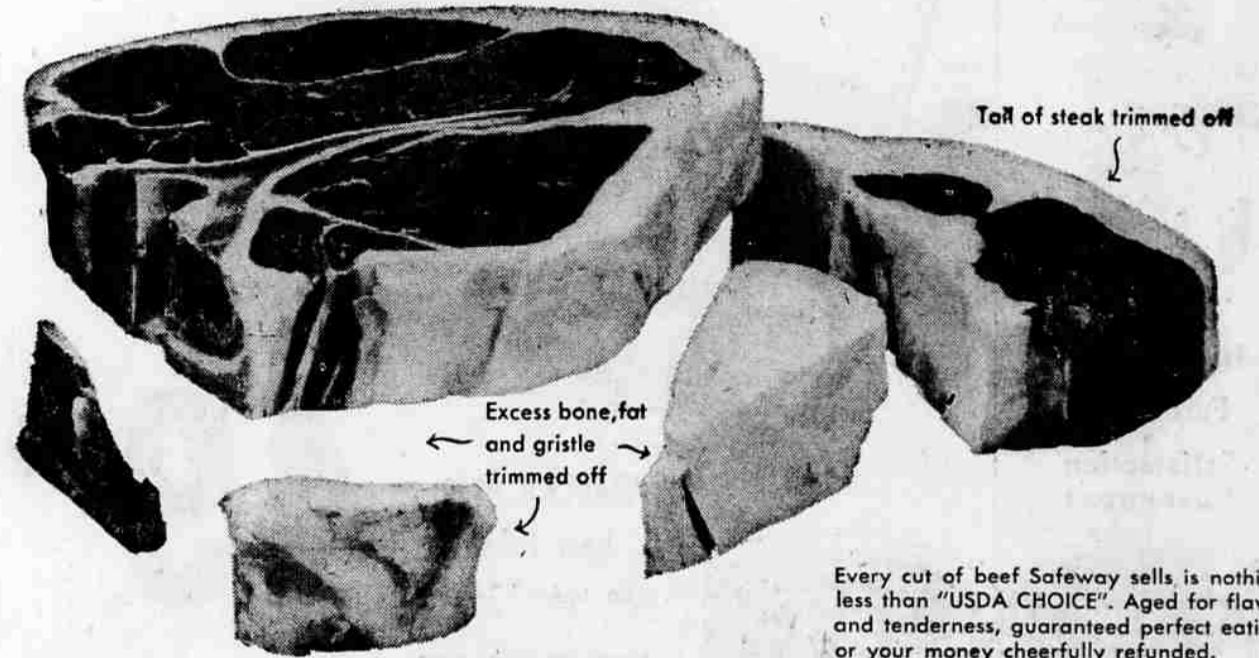
**SAFEWAY**  
has the  
**FINEST MEATS**  
IN TOWN

**Scientifically "Aged" for Peak Tenderness—Perfect Flavor  
Trimmed Just Right Before Weighing For Grand Eating!**

**SAFEWAY SELLS ONLY "USDA CHOICE" BEEF . . . YOUR BEST BUY IN FINE BEEF**

At Safeway You Pay Only for  
the Perfect Eating Part!

See the Extra Value Safeway Trimming Gives You!



Every cut of beef Safeway sells is nothing less than "USDA CHOICE". Aged for flavor and tenderness, guaranteed perfect eating or your money cheerfully refunded.

**STANDING RIB ROAST**  
THE KING OF OVEN ROASTS

**Lb. 59¢**

- Season generously with Crown Colony Savor Salt.
- Place meat fat side up in uncovered shallow roasting pan.
- Add no water and do not cover.
- Roast in slow oven 300° to 350°.
- Roast to desired degree of doneness — using a meat thermometer eliminates guesswork since it assures any degree of doneness desired.

**T-BONE STEAKS**  
PORTERHOUSE OR CLUB STEAKS

**Lb. 89¢**

- Turn the oven regulator to "broil".
- Place meat on rack of broiler pan, two to three inches from the heat.
- Broil until top side is brown.
- Season the top side with Crown Colony Savor salt.
- Turn and broil the other side.
- Season and serve at once.

Easy, Thrifty Way to Thrill Your Family  
**OLD-FASHIONED MEAT LOAF**

Made with Safeway's 100%  
**GROUND BEEF**

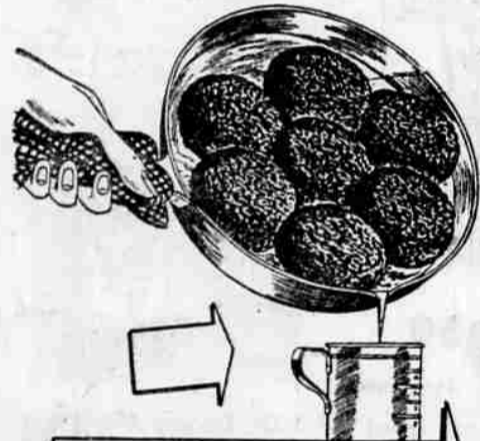
**39¢ lb.**

Made fresh daily of lean and tender beef, with just enough fat for cooking juices. No matter how you serve it, freshness and flavor set it apart. Try Safeway's ground beef once. You'll always want it — and always enjoy it.

**RECIPE: OLD-FASHIONED MEAT LOAF**

Bakes in 1 hour—Serves six.  
1½ pounds ground beef  
1 small onion, finely chopped (¼ cup)  
½ cup soft bread crumbs  
½ cup milk  
½ cup chili sauce  
1 egg, unbeaten  
1½ teaspoons salt  
½ teaspoon pepper

Use medium-size bowl to mix ingredients. Toss together lightly with fork—but do not overmix. Press mixture in a 5 x 5 x 3 loaf pan and level top. Bake in moderate oven (350° F) until meat is cooked as you like it. Use heated platter to serve. Added chili sauce and onion rings make tasty garnishing.



Low fat content of Safeway's ground beef means less shrinkage in cooking . . . more good-eating meat!

A Grand Savings On Premium Quality

**Bel-air Frozen Peas**

OR WHOLE CORN Your Choice **6 10-oz. Pkgs. 89¢**

Every Cut of Beef Safeway Sells is "U.S.D.A. CHOICE"

<b>Boneless Steak</b>	Top Sirloin—"U.S.D.A. Choice" Tender and Flavorful	Lb.	<b>98¢</b>
<b>Beef Round Steak</b>	"U.S.D.A. Choice" grade beef All properly aged	Lb.	<b>75¢</b>
<b>Beef Rump Roast</b>	"U.S.D.A. Choice"—Trimmed of excess bone and fat	Lb.	<b>75¢</b>
<b>Beef Pot Roast</b>	"U.S.D.A. Choice Grade" Blade cut Round Bone Roast, lb. 49¢	Lb.	<b>35¢</b>
<b>Corned Beef</b>	Boneless brisket — for the finest corn beef and cabbage	Lb.	<b>49¢</b>
<b>Boiling Beef</b>	from our Choicest beef	Lb.	<b>10¢</b>
<b>Hen Turkeys</b>	oven ready 10 to 16 lbs.	Lb.	<b>49¢</b>
<b>Fish Sticks</b>	Captain's Choice fresh frozen 8-oz. pkg.	Lb.	<b>39¢</b>
<b>Fresh Fryers</b>	Whole, Drawn Cut-up—Pan-Ready	Lb.	<b>47¢</b>
		Lb.	<b>49¢</b>

You Get "BONUS QUALITY" at No Extra Cost in  
**Lucerne 36% Whipping Cream**

Extra rich — guaranteed to whip every time. And don't forget strawberries and shortcake in our produce section. Now you're the answer to a perfect dessert.

1/2 Pt. **31¢** Pt. **57¢**  
Ctn. Ctn.  
**Lucerne Non-Fat Skim Milk** Qt. **18¢** 1/2 Gal. **35¢**  
Ctn. Ctn.  
**Lucerne Sour Cream** Use it in your favorite Pt. **29¢**  
sour-cream recipes Ctn.

**Lucerne 3.8 Milk**

Bonus quality milk at no extra cost . . . that's Lucerne! Your choice of homogenized or cream top. Keep plenty on hand for warm weather drinks calling for milk.

Qt. **23¢** 1/2 Gal. **45¢**



You Save 2c on Every Loaf of Better-Than-Ever  
**Mrs. Wright's Bread**



Now hours fresher at Safeway, with a new improved formula—home-baked flavor, light finer texture, guaranteed to please.

White or Lge. 26¢ | Pullman Lge. 26¢  
Wh. Wheat loaf Sliced White loaf  
**Skylark Slender-way Bread** Std. 25¢  
Loaf  
**Skylark Raisin-Nut Bread** Std. 30¢  
Loaf

Oregon's **BLITZ BEER**  
Own The Light Refreshing Beer!  
Olympia, Lucky Lager, Heidelberg  
Carry-home pack 6—12-oz. cans **\$1.15**

"BEST" Eastern Beer  
You'll enjoy the mellow flavor of this top-quality Eastern beer!  
12-oz. size 6-can pack **89¢**

**Cake Mixes**

**PILLSBURY—WHITE**  
**YELLOW or CHOCOLATE**  
**4 Pkgs. \$1.00**

- Peppermint Chews—Roxbury candy 9-oz. pkg. 29¢
- Jelly Strings—Roxbury candy 8-oz. pkg. 19¢
- Marshmallow Peanuts—Roxbury 14-oz. pkg. 29¢
- Jell-Well—gelatin dessert pkg. 4/29¢
- Apricots—Sundown, whole No. 2½ can 25¢
- Prunes—Sunsweet, cooked No. 303 can 28¢
- Pineapple—Highway, sliced No. 2 can 27¢
- Apple Juice—Westfair 32-oz. bottle 23¢
- Pineapple Juice—Lalani 46-oz. can 25¢
- Gr. Asparagus—Gardenside, center cut No. 300 can 17¢
- Kernel Corn—Highway No. 303 can 2/29¢
- Sweet Peas—Stokley finest No. 303 can 20¢
- Spaghetti—Franco American 15½-oz. can 15¢
- Chopped Ham—Hormel 12-oz. can 49¢
- Barbecue Sauce—French 18-oz. bottle 49¢
- Sandwich Spread—Lunch Box pint jar 41¢
- Dill Pickles—Zippy, kosher half gal. 59¢
- Dill Pickles—Zippy regular half gal. 59¢
- Boysenberry Delight—Tea Garden 8-oz. glass 29¢
- Fudge Cookie—Jane Arden sandwich 1-lb. pkg. 49¢
- Potato Chips—Blue Bell, twin pack 11-oz. pkg. 59¢
- Chee-Zip—cheese spread 16-oz. jar 54¢
- American Cheese—Dutch Mill, sliced 8-oz. pkg. 29¢
- Pimento Cheese—Dutch Mill, sliced 8-oz. pkg. 29¢
- Swiss Cheese—Dutch Mill, sliced 8-oz. pkg. 29¢

YOUR FAVORITE **ICE CREAM** FROM SAFEWAY

**COTILLION—Guest Quality**

Superb flavor, velvet-smooth consistency . . . all the quality of its proud name. Delight your guests with Cotillion!

**69¢**

Pint Ctn. 35¢ Quart  
**SNOW STAR Ice Cream** **BAND BOX Iced Dessert**

Qt. 49¢ Half Gallon 89¢  
Qt. 39¢ Half Gallon 69¢

Shop **SAFEWAY**