

Cain Apparently Had Reason To Predict Loss of Federal Job

By A. ROBERT SMITH
Mail Tribune Correspondent
Washington — Harry P. Cain, ex-senator from Washington state, wasn't just talking last week when he virtually predicted President Eisenhower would soon let him out of his job as a member of the Subversive Activities Control board.

Cain and his family are making a preparation for relatively hard times—both politically and economically.

The former lawmaker has no plan for returning to Washington state if his prediction does come true and he gets the axe when his term expires Aug. 9. In fact, the Cains soon will sell their property in Tacoma to help shore up their finances against whatever may lie ahead.

Cain has been in trouble politically throughout much of his career in public life, but never to the pronounced degree that is currently the case. He was rocketed into high office in 1946, after serving as mayor of Tacoma, when he beat Sen. Hugh B. Mitchell (D-Wash.) and went to congress in the Republican off-year landslide which elected the GOP-controlled 80th congress.

Stormy Six Years
It was a stormy six year term for Cain, featured by a pinnacle of success in his fight to block the appointment by President Truman of ex-Gov. Mon C. Wallgren to the National Security Resources board. But by the time he was seeking reelection his stock with his own party had dropped so low that he was trampled in the 1952 Eisenhower landslide by a Democratic congressman, Sen. Henry M. Jackson.

Cain stayed on in Washington after his defeat and, although a member of the Taft wing of the party, received an appointment from Eisenhower in April, 1953, to the obscure board which is responsible for determining which organizations in the country are Communist-dominated.

The fireworks began in January, 1955, when Cain lashed out in a speech at Spokane with the charge that the Eisenhower administration's security program was "unnecessarily destroying individuals." He cited the case of Wolf Ladejinsky, the land reform expert cleared as a good security risk by the State department, then branded a risk by the Agriculture department, then cleared and hired by the Foreign Operations administration.

Worked for Improvements
Since then Cain has crusaded for improvements in the security program, testifying before congressional committees when they went into the problem, speaking to many meetings around the country. But he has yet to get the private ear of the President to state his case—for Harry Cain can't get through the front door of the White House.

The reason is that the president and his advisors resent Cain's going to the public with his complaints instead of voicing

'Hiroshima Maiden' Dies Following Plastic Surgery
New York—(U.P.)—One of the "Hiroshima Maidens" died of a heart attack Thursday night during humanitarian surgery to remove the disfiguring scars left by the world's first atom bomb raid.

Tomako Nakabayashi, 26, died six hours after the plastic surgery at Mt. Sinai Hospital. It was her third operation to remove the scars of World War II. She was one of 25 Japanese girls who came to the United States to hope again for the beauty they lost during the historic leveling of Hiroshima on Japan's inland sea.

Some were so hideously disfigured they lived the lives of recluses in the picturesque city that rose again from the rubble. "It seems impossible to recover the beauty that nature gave to us, but we live in hope," one of the girls said at a shy, giggling reception upon their arrival one year ago.

Named the "Hiroshima Maidens" by a sympathetic public, they were warmly received everywhere and taken in to American homes to live while they awaited their turns at the hospital's overcrowded operating room.

them privately to them and staying mum about the whole matter publicly. Eisenhower has had only acid tones when questioned about Cain at his news conferences. Cain has been bawled out by Sherman Adams, assistant to the President, for not playing on the "team."

So Cain has good reason to think he is on the way out of the position which lends authority to his critical remarks. As a consequence, Mrs. Cain has gone to work for a local interior decorator and taken out a license to sell real estate. In addition to putting their Tacoma property on the market, the Cains have rented out their expensive custom-built home here and moved to a modest one-bedroom apartment. Living with them is their 12-year-old daughter, Candy. Their 18-year-old son, Harry III, is a freshman at Stanford.

Although in the doghouse today with the middle-of-the-road Republican administration, Cain is as much the darling of liberal groups now as he was of conservative groups a few years ago when he sided with Sen. Joseph R. McCarthy—a transformation which has perplexed many persons who don't know Harry Cain. His wife explains it like this:

"He would always be the one who would catch a pendulum that had swung too far to the left or the right. He is a true advocate of moderation, which brings the pendulum back to equanimity."

"Just as the country should always be grateful to Joe McCarthy for having alerted us to the Communist menace," said Mrs. Cain, "I think it is generally agreed that Harry is the one who is helping to bring that pendulum back to normal."

Believes Box Car Rent Is Too Low

Seattle, Wash. — (U.P.) — Robert S. Macfarlane, president of the Northern Pacific Railway, believes too cheap rent on freight cars is a major cause of a shortage of same.

"The \$2.40 per diem rentals one railroad must pay another on freight cars should be increased," Macfarlane said. "This low rent, in the long run, is costing all railroads money because cars are not used at their maximum efficiency and consequently there are not cars enough to fill the shipper's needs."

The railroad executive said it cost about \$8,000 to build one freight car, but it was cheaper to rent them than to build them.

Salem — (U.P.) — The fourth annual conference on Oregon state administration will be held here Saturday starting at 9 a.m.

Little More Than 3rd of Crimes Solved

Sacramento — (U.P.) — Of 196,416 major crimes in California in 1954, only 69,810 were cleared up by arrest or investigation. That means only a little better than one-third of the crimes were solved.

State figures showed that only one out of four reported cases of burglary or grand theft and only 26 per cent of auto theft cases resulted in actual arrest. And

Friday, May 25, 1956

MEDFORD (OREGON) MAIL TRIBUNE—THREE

naturally, not all persons arrested were convicted. National figures of the FBI showed only one out of every seven offenses reported winds up in an actual court conviction.

MAY UP POSTAL RATES

Buenos Aires — (U.P.) — The Communications Ministry said Thursday it is studying the possibility of raising postal and telegraph rates as much as 100 per cent to meet an expected deficit this year.

— CALL —
LININGER'S

**WHEN YOU NEED
★ READY-MIX ★
CONCRETE**

M. C. LININGER & SONS

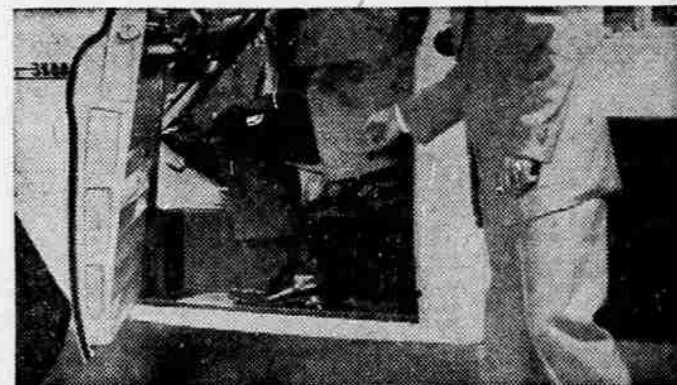
Phone 2-3336 or 2-5897
Ashland 8121

USE TRIBUNE WANT ADS!

What to WATCH for when selecting the most modern truck for your job!

You can start your "shopping tour" for a new truck right on this page! The salesman shown here is pointing out modern features that increase efficiency on the job and give you more truck for your dollars. So

take a moment to follow him around in this on-paper demonstration. Then, when you go out after your new truck, you'll know what to look for and you'll know where to find it, too—right here, at your Chevrolet dealer's!



WATCH for concealed Safety Steps

Here's one mark of a truly modern truck! Chevrolet concealed Safety Steps stay clear of snow, mud and ice to give you firmer, safer footing. They're a big improvement over the old-fashioned exposed running boards still used on some "new" trucks.



WATCH for advanced Work Styling

The long, low, forward-sweeping lines of new Chevrolet trucks provide modern truck beauty that's good advertising for your business. Each weight class has its own distinctive styling—truck appearance is job-tailored to be right for your work!



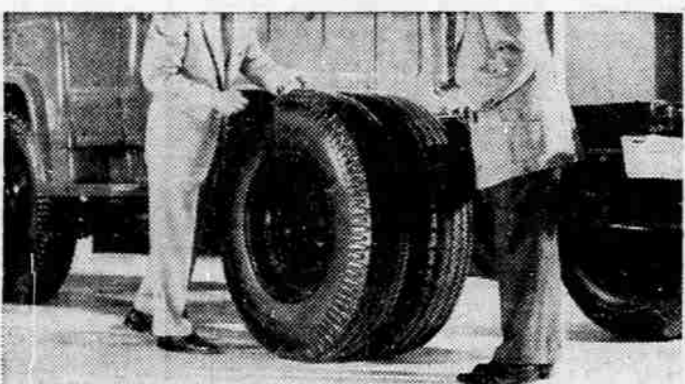
WATCH for modern visibility

Another sign of modern truck design is the Chevrolet panoramic windshield. A full 1000 square inches of safety plate glass makes viewing easier and safer. With Full-View rear window, an extra-cost option, visibility is virtually unobstructed, all around.



WATCH for High-Level ventilation

Here, the modern touch extends to the very air you breathe! That high intake receives air with a minimum of road fumes, channels it through a special chamber, where water is drained off. You get a more even flow of outside air in any weather.



WATCH for tubeless tires

Here's the greatest tire advancement of our time, now standard on all Chevrolet trucks! New tubeless tires minimize the possibility of blow-outs, retain air better when punctured, run up to 25° cooler, and last longer. They save you money on repair, too!



WATCH for modern cab design

You can recognize modern Chevrolet truck cabs by their comfort! There's lots of relaxing leg room, spacious head room and seat width to handle three big men without crowding. And the no-glare instrument panel puts everything within easy sight and reach!



WATCH for modern short-stroke V8's

There's a new V8—either standard or optional at extra cost—for every model. They're more compact, efficient engines, too—the leaders in their respective classes for horsepower-per-pound. You get low-cost hauling, weight-saving power to pull big loads!



WATCH for automatic transmissions

A great automatic transmission is available as an extra-cost option for whichever Chevrolet truck you choose! In 3000-4000 Series models, there's HYDRA-MATIC to bring you the ease of no-shift hauling. And for 5000 through 10000 Series models there's exclusive, revolutionary POWERMATIC!



WATCH for Ball-Gear steering

Modern Ball-Gear steering, featured in all Chevrolet Task-Force trucks, makes your job easier at every turn! In this precision steering gear, scores of polished steel balls minimize friction, keep steering light yet firm for quick, agile maneuvering. It's the next best thing to having power steering in your truck!

New Chevrolet Task-Force Trucks

Modern features such as those shown above are found everywhere in new Chevrolet trucks! Here are others you'll want to get acquainted with:

<p>Extra high-compression 8's—the world's most popular truck engines!</p> <p>Dependable 12-volt electrical system!</p> <p>Great new 5-speed Synchro-Mesh transmission!</p>	<p>Rugged Synchro-Mesh 3- and 4-speed transmissions!*</p> <p>New Triple-Torque tandem options!</p> <p>Safe, sure Twin-Action and Torque-Action brakes!</p>
--	--

*Standard in Series 9-10000 models, optional at extra cost in Series 3000, 6000, 7000, 8000 models.
**4-speed Synchro-Mesh transmission is standard in 3800 through 8000 Series models, optional at extra cost in other 3000 Series models.

Anything less is an old-fashioned truck!



Drive with care... EVERYWHERE!

Ninth
and
Bartlett
Streets

COURTESY CHEVROLET

Phone
2-6115
•
Medford