

Tuberculosis Problem Increasing in Local Areas, Official Says

Tuberculosis is becoming an increasing problem to local communities and to local health organizations, Kenneth Ross, executive secretary of the Oregon Tuberculosis and Health Association said during a recent visit here.

"Contrary to the belief of many people, the number of cases of tuberculosis has not decreased during the past several years but because of the new drug treatments, patients are not dying and are not hospitalized as long," he said. "Instead, they are returning to their homes from the state-financed sanitariums and the local communities are then faced with the problems of supplying expensive drugs and care. Very few are able financially to care for themselves and very few are able to return to work," he added.

Ross pointed out the 15 new cases in Jackson county last year will represent an expenditure of approximately \$225,000 in tax money. Studies have shown that each case of tuberculosis costs at least \$15,000 unless found in the early stages. There were 636 new cases in Oregon last year.

Recent Study

Quoting from a recent study of the changing picture in tuberculosis control, Ross stated the study shows only about half the tuberculosis case load is now in hospitals, the other half being cared for in homes. Of the half in local communities, 87 per cent are far advanced, the report indicates.

Ross commended the Jackson County Public Health association, the local affiliate of the State Tuberculosis and Health Association, for its efforts through the chest x-ray clinic and the hospital x-ray programs to find unknown and early tuberculosis infections.

Mrs. Chester Guches, x-ray chairman, pointed out that the clinic is open to the public Thursday afternoons at Sacred Heart hospital.



the best way to say you care

Hallmark MOTHER'S DAY CARDS

Swem's BOOKS - GIFTS - RECORDS

10-Year Program For Park Service Is Reviewed Here

Mission 66, a program designed to increase U.S. national park facilities to suitable standards within the next ten years, was outlined for the Medford Rotary club Tuesday by T. C. Williams, superintendent of Crater Lake National park.

In a brief luncheon address at the Jackson hotel Williams pointed out that understandable emphasis upon defense spending had resulted in curtailed appropriations and serious shortages of parks facilities while attendance is steadily increasing.

Approximately 50,000,000 people will visit various parks and monuments this year, and it is estimated that attendance figures will jump to 80,000,000 by 1966, he said.

Capital Encouraged

In the Mission 66 program, private capital will be encouraged to invest in public housing accommodations wherever possible. Fast-growing popularity of outdoor camping will be taken into consideration in the new 10 year plan for rehabilitation and development. Trails, buildings, scenic roads and view points and other facilities will be brought to satisfactory standards and extended to accommodate anticipated tourist increases, Williams pointed out.

Scenic views of national parks, including Crater Lake, are shown, and a wire recording of commentary by Conrad Worth, national parks chief, accompanied the pictures. Mark A. Goldy, program chairman, introduced the speaker.

Reconsideration Asked On Hawthorne Tracks

Portland — (U.P.) — The Portland Association of Building Owners and Managers yesterday asked the city to reconsider its stand in opposition to interurban tracks on the new approaches to the Hawthorne bridge.

Arvin Burnett, spokesman for the association, said in a letter to the city council that the group was concerned over "the failure to find a satisfactory solution" to trackage on the bridge.

"We believe that wherever possible such lines should be continued into the heart of the city," Burnett said.

Hippopotamus Born In Rio De Janeiro

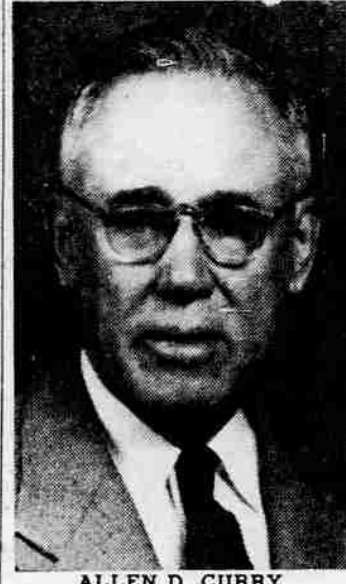
Rio De Janeiro — (U.P.) — The Rio Zoo had another unusual birth Tuesday.

A baby hippopotamus was born, said to be a rare occurrence in captivity. Two months ago the zoo announced the birth of a rhinoceros, the second to be born in captivity here and the third in the world.

Meet the Candidates

(Editor's note: Each election year, the Mail Tribune makes space available to local candidates in contested races to set forth their programs and ideas. In the primary election, only eight candidates for local office have competition. Following is the second of four "Meet the Candidates" features in which, side by side, the candidates' statements or those made on their behalf, are published.)

Republican Candidates For County Assessor



ALLEN D. CURRY

In seeking my first political office in Jackson County I respectfully submit the following information.

I was born Jan. 25, 1889, at Norton, Kan. Was raised on the farm and farmed there many years before coming to Oregon in 1926, and the City of Medford in the fall of 1928. I own my home at 505 Benson st., and have lived at this address since the spring of 1929.

I have four sisters living here, two of them are with the Medford school district; Miss Olive Curry as school nurse and Mrs. Eleanor Hamilton, teacher in the Roosevelt school. Their records speak for themselves.

My wife passed away in 1939, leaving me with five children who were all graduated from the Medford schools.

I am an active member of the First Christian church and have been an active member of the Rogue Valley Gideons since 1947.

I come seeking the nomination for the office of County Assessor of Jackson County in the Republican ticket. This being my first adventure in the political field in Oregon, it is not altogether new to me, as I have been following things pretty close for many years and don't believe I have failed to exercise my rights and duty to vote since I first voted.

I have been dealing with the public for many years, having been township assessor in Kansas for three years; was in the tax department of the Sheriff's office for a year and a half here in Jackson county, was an employee of the City of Medford, in the treasurer's and recorder's office for five years; was transferred to the water department in 1933 where I was office manager and accountant at my retirement the first of March 1955. In connection with my work in the water department I served as city police judge for a period of nine years, receiving much valuable experience and knowledge.

Most of you know that the assessment of the property in the state of Oregon is controlled by the State Tax commission, there-



JOHN H. TIZEKKER

I was born in Pennsylvania, graduated from high school there, attended engineering college in Cleveland, Ohio, and supervised heavy construction for over 15 years before coming to Medford in 1945.

I worked in the county assessor's office of Jackson county the latter part of 1946 and in 1947 and 1948. In 1949 I worked at city hall. In 1951 I became associated with Western Detectives and today am manager for the same agency in Medford.

I am a member of the William Penn order, Patriotic Sons of America Elks, Exchange club, and in good standing in the AFofL union.

My slogan is efficiency, integrity and a fair and just tax to all.

Italian Department Heads Not 'Excellency'

Rome, Italy — (U.P.) — Premier Antonio Segni directed all government ministers and department heads today to stop referring to the chief of state as "excellency" — a title forbid by law since 1945.

"The proper address is 'Mister President,'" the directive said.

for the duties of the Assessor are more in the form of an executor or administrator.

I am not making any rash promises that I will reduce your taxes, but I will make every effort to equalize the assessed valuation of all properties. Will give a fair and impartial hearing to any and all who desire such a hearing, and will lower the taxes if possible.

With my many years experience with the public, I feel that I am well qualified for the office of County Assessor and know that I can uphold the integrity of the office and give and administer impartial justice to all.

When you go to the polls on May 18th, I ask you to consider my many qualifications and background, and when you cast your ballot be sure the X is before the name of Allen D. Curry, for your next Assessor.

In County Schools

GOLD HILL SCHOOL

Thursday, May 3, Gold Hill Thinclads journeyed to Rogue River to a three way meet with Rogue River and Fruitdale elementary schools. Results on the A meet were Gold Hill 53 1/2, Rogue River 32 1/2, and Fruitdale 13. I the B class Fruitdale led with 48 points, followed by R R with 40 points, and Gold Hill with 11.

More than 110 students and teachers saw interesting collections in the Jacksonville Museum and the old buildings of the city.

Transportation to and from Jacksonville was furnished by school district buses. The students said that this type of activity makes Oregon history more meaningful.

While here he will meet with the weight reduction committee to evaluate three classes now in session and will also meet with Mrs. Earl Bigalow, chairman of the fund raising committee.

Those conducting weight reduction classes in the county are Allen Hatch, social worker for boys and girls aid, Miss Celia Walker, child welfare worker, and Miss Dorothy Colard, public health nursing supervisor.

On Thursday, April 26, the sixth grade Oregon history classes of Roosevelt school in Medford participated in a field trip to Jacksonville.

Heart Association Official in Medford

Henry Keaneally Jr., Portland, program director for the Oregon Heart association, will be in Medford Monday evening and all day Tuesday.

Humans would become confused if they "saw" only with their eyes, because the image on the retina always is upside-down. The brain translates the images and conscious vision takes place in the mind. The eye merely records light stimuli and sets off a pattern of nervous impulses.

Vodka Highball



So smooth it leaves you breathless

Smirnoff
the greatest name in VODKA

80 Proof Distilled from grain. Ste. Pierre Smirnoff, Inc. (Div. of Heublein), Hartford, Conn., U.S.A.

WEISFIELD'S Last Minute GIFT IDEAS for MOTHER'S DAY MAY 13

No Money Down... Pay As Little As 25c Week

 <p>"Star of Love" Diamond Earrings Regularly 75.00 One diamond in each earring. Floral design. At 59⁵⁰</p>	 <p>Better COSTUME JEWELRY 3.95 to 9.95 Values A wide style assortment by famous name designers. Now Your Choice 1⁹⁵</p>	
 <p>ASSORTED T-V LAMPS REG. 5.95 In a choice of unusual ceramic motifs. 2⁹⁹ ea. No Money Down. 25c Week</p>	 <p>2 Diamond Ladies Watch REG. 39.75 2 diamonds enhance charm of its design. 16⁸⁸ No Money Down. 50c Week</p>	 <p>COMMUNITY SILVERPLATE 52-pc. set with chest 48⁷⁵ 1/2 OFF Evening Star pattern No Money Down. 1.25 Week</p>
 <p>3 PIECE DRESSER SET REG. 5.95 Gold or silver finish. Floral design. 3²⁹ No money down. 25c Week</p>	 <p>Fine Airplane Luggage Train Case 9.95 21" Overnight 12.95 26" Fullman 16.95 Pay As Little As 25c Week</p>	 <p>Rhinestone Jewelry REG. 3.95 Smart new styles in a wide choice. 1⁹⁵ No Money Down. 25c Week</p>
 <p>2-Slice TOASTER REG. 19.95 Pop-up type with a handy crumb tray. 9⁸⁸ No Money Down. 25c Week</p>	 <p>Sunbeam STEAM IRON REG. 17.95 Less 3.00 Trade in 14⁹⁵ No Money Down. 50c Week</p>	 <p>400-DAY CLOCK REG. 24.95 Needs winding only once in 400 days! 14⁸⁸ No Money Down. 50c Week</p>
 <p>White Summer Jewelry REG. to 3.95, 1.00 and 1.95 Necklaces, earrings, bracelets, in so many good looking styles! 1⁹⁵ No Money Down. 25c Week</p>	 <p>Fine Dinnerware Sets Specially Priced 10⁸⁸-99⁹⁵ Chose from a wide variety of our quality dinnerware sets. Low Easy Credit Terms</p>	 <p>Sunbeam MIXMASTER Has 10 speeds, automatic juicer, bowl fit beaters. 47⁵⁰ No money down. 1.25 week</p>

AT WEISFIELD'S

They're Lightweight, RUST and FADE PROOF

POPULAR — DELUXE FOLDING ALUMINUM CHAIRS

REG. 9.95

NOW ONLY **5⁶⁶**

- HEAVY GAUGE FRAME
- WEATHER RESISTANT SARAN CLOTH SEAT
- WIDE HARDWOOD ARMS

SMART! COMFORTABLE!
Highly polished aluminum with non-tilt legs. Seat and back is of multi-colored, flame, fade-proof Orlon.

FOLDS UP INTO A COMPACT SIZE FOR CAR OR BOAT

NO MONEY DOWN 25c a Week


WEISFIELD'S
THE WEST COAST'S LARGEST CREDIT Jewelers

Open Tonight 'Til 9 122 East Main St. — Phone 3-5348

WEISFIELD'S ...SCOOPS THE FIELD! THE YEAR'S BEST BLANKET BUY! But Hurry... Our Quantities Are Limited

AUTOMATIC BLANKET

WITH THE EXCLUSIVE G.E. SLEEP GUARD CONTROL



TWIN BED SIZE 24⁹⁵

DOUBLE BED SIZE 29.95

NO MONEY DOWN 50c A WEEK

Only One Year-around Blanket To Buy and It's Washable!

The Sleep Guard Control on your bedside table provides perfect heat for you. Just set the dial and the thermostat adjusts to any change of temperature during the night. There is also a safety control that cuts off current immediately if heat exceeds a certain limit. Comes in Rose Pink or Turquoise.

ORDER BY MAIL

WEISFIELD'S JEWELERS — 122 East Main St.
Please send me the G.E. Automatic Blanket Twin Bed size at 24.95 (), Double Bed size at 29.95 (). I am enclosing \$_____ and will send \$_____ per month or \$_____ per week until the entire amount is paid.

Name _____ Phone _____
Address _____ New Leaf?
City _____ Zone _____ State _____
Employed By _____ New Leaf?
Credit References (Firm Names and Where Located)

WEISFIELD'S
THE WEST COAST'S LARGEST CREDIT Jewelers

122 EAST MAIN STREET
PHONE 3-5348

OPEN TONIGHT 'TIL 9