

Logging Road Regulations Will Apply Only to Use Agreements

By A. ROBERT SMITH
Mail Tribune Correspondent
Washington — The four new logging road regulations which the Bureau of Land Management put into effect this past week on the O & C lands will apply only to road use agreements entered into from here on out.

The changes will not apply to the more than 400 arbitration-type road agreements currently in effect, explained Walter H. Horning, chief of the BLM's forestry division, unless private land owners involved in these agreements voluntarily accept them.

The four changes would:

Private Access
1. Permit purchasers of O&C timber to use private access roads or rights-of-way covered by future road-use agreements during the arbitration of differences on the terms and conditions to be paid for use of the roads.

BLM has interpreted its old regulations as banning use of roads or right-of-way until agreement had been reached between the timber buyer and the private land owner on the road use fees.

However, in one noteworthy case near Roseburg, a timber buyer who purchased a tract of O&C stumpage under the BLM emergency salvage program Dec. 8, 1954, succeeded in logging the timber completely before arbitration had settled his dispute with a landowner over road use charges.

This was the Trico Timber company of Dillard, which went to court after 30 days of unsuccessful haggling over road fees with Youngs Bay Lumber company. Claiming it had to have the timber, the company won court support and went in and cut the timber after posting bond for the road use charges to be agreed to later.

Allows Use
This new change in the regulations permits substantially what occurred in the Trico instance. It allows use of a road if the user puts up a bond sufficient to cover the amount likely to be awarded through subsequent arbitration; and if the user obtains liability insurance to protect the road owner from any additional hazard or damage caused by use of the road during arbitration.

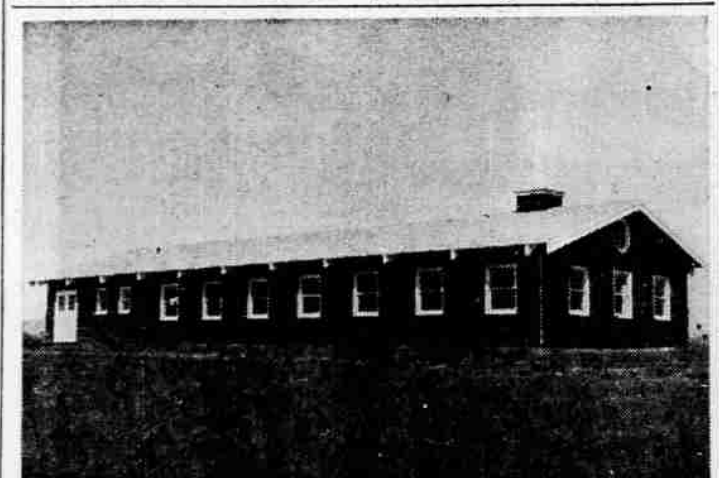
2. Permit BLM and private road owners to swap without charge the use of their respective roads when they have approximately equal road-use values. BLM said in some cases these agreements lead to long-

term agreements for joint use of road systems which are partly federal and partly privately owned.

3. Provided that permanent easements across private lands for construction of government access roads would be substituted for rights-of-way acquired from private owners under road-use agreements.

Terms, Conditions
4. Require right-of-way permits under future permits to state the terms and conditions of use for roads they own and to authorize BLM to publish such data in advance of timber sales.

Horning said BLM officials think this last change "holds the greatest promise" of improving conditions for effective timber management of the O&C



CHURCH TO BE DEDICATED—Borean Baptist church, White City, shown above, will be dedicated at 3 p.m. today. The public is invited to attend ceremonies. The Rev. Glenn S. Wade is pastor of the church which has been constructed mainly through work done by members. Property was donated by Glenn Jackson, Dr. Chester J. Padgett of the Bible Institute of Los Angeles, will be guest speaker and will conduct a Bible Teaching conference at the church, May 6 through 11 at 8 p.m., daily. The church has been used for services since last February, though not completed entirely until last week. Youth choir members of the church will furnish songs for the Sunday dedication, directed by Fred Phillips.

State Control Board Complete Plans For Mental Hospital Site

Salem—(U.P.)—The State Board of Control Saturday was completing final negotiations for purchase of a 506-acre tract west of Wilsonville where the new \$15,000,000 Portland area mental hospital will be built.

I announcing selection of the Wilsonville site late Friday

Gov. Elmo Smith said plans for the first unit of the hospital would move forward "without delay."

The board met yesterday with D. S. Young of Wilsonville who owns or hold options on the property. The Wilsonville decision is contingent on a slight adjustment in cost, agreement on certain conditions of timber removal on part of the land and agreement by Bonneville Power administration to relocate its proposed high transmission line east of the site.

Board members said they expected little difficulty over the points and estimated the cost of the tract at between \$240,000 and \$250,000.

Decision on the hospital site was delayed pending an Air Force decision on location of its new Willamette valley jet base. Earlier this week the Air Force decided to locate the base west of Woodburn—some 12 miles northeast of the hospital site.

Gov. Smith said a total of \$6,300,000 has been appropriated by the Legislature for the first unit of the structure. This will provide 450 beds.

In announcing the decision, the board said it was extremely difficult to make a choice out of the many available.

But the board said the Wilsonville site was not only the least expensive per acre but it had superior topography, water supply possibilities and drainage. Moreover, it is in an especially good tactical position from the standpoint of civil defense. By law the hospital had to be located within a 20-mile radius of the Portland courthouse.

Two other sites in the final running were a 401-acre tract east and north of Wilsonville and a 432-acre tract about three miles south of Hillsboro.

Parade in Monmouth Celebrates Centennial

Monmouth — (U.P.) — More than 30 riding groups and a score of floats participated in a grand parade through Monmouth Saturday.

Gov. Elmo Smith was grand marshal of the parade which is part of Monmouth's centennial celebration.

HERTZ SYSTEM

Daily's U-Drive
Medford Airport

First Cover Spray For Psylla, Moth Are Recommended

First cover spray on pears for control of psylla, codling moth and scab should be completed on May 12, according to L. G. Gentner, entomologist at the southern Oregon experiment station, and Cliff B. Cordy, county horticulture agent.

In speed sprayers six pounds malathion or three pounds parathion or three pounds EPN plus 7½ pounds 50 per cent DDT plus seven pounds ziram per acre is recommended.

For hose rigs, one pound malathion, one-half pound parathion or one-half pound EPN plus 1½ pounds DDT plus 1½ pounds ziram per 100 gallons is suggested.

If European red mites are a problem, the recommended amount of organic phosphates will not control them, they pointed out. Where mites are more numerous the spray quantities should be doubled.

Apple Spraying
In spraying apples, they recommended 10 pounds of DDT plus six pounds parathion per acre applied by May 20.

Where pear trees show definite yellowness because of iron chlorosis, a normal green color can be restored by adding three pounds of iron chelate per acre, Gentner and Cordy said.

Tests at the local experiment station indicate the treatment not only "green-up" the trees but increases the crop for the following year.

For apple thinning, Gentner and Cordy recommended use of four grams of pre-harvest type hormone per 100 gallons. The material should not be mixed with other spray, they cautioned, but should be applied

A Nichol's Worth of ... Comment On This and That

By HARMAN W. NICHOLS
United Press Feature Writer

Washington—(U.P.)—You have to admire courage. But in this case, you have to admire determination a little more.



This concerns Irvin Hershowitz, a telephone technician at Belling Air Force Base for the past 13 years. Irvin, a handsome, dark-haired fellow with more than considerable courage, has fought blindness since birth. Some time back, he also fell in love.

Himmelsbach Appointed Baker County Attorney

Salem—(U.P.)—Jesse R. Himmelsbach Jr. was appointed district attorney of Baker county yesterday by Gov. Elmo Smith. Himmelsbach succeeds the late Robert F. Vaughn and will serve until his successor is elected and qualified.

Himmelsbach had the unanimous support of the Baker County Bar association.

About 55 per cent of the farmers in the U.S. receive up to 95 per cent of the total cash farming income.

separately. Trees should be thoroughly wetted, using about 300 gallons per acre. Spray should first be applied crosswise in the orchard, they said, then lengthwise with no interval between the applications.

ter. She thought maybe she could be of help.

Correspondence followed with Eleanor learning to "write" in Braille and Irvin masterminding the typewriter.

"It was harder for me than it was for Irvin," Eleanor said. "It took a long time for me to learn how to use the materials needed to raise letters on a piece of paper."

Learned Quickly
Irvin's sensitive fingers and his agile brain figured out the keys on a typewriter very easily.

Not long ago (on a Friday the 13th, incidentally) they were married.

The gloom of blindness has been with the telephone technician for 32 years and is bound to remain with him forever.

"I do not feel that I have a handicap," Irvin says. "My hearing is extra sensitive and is bound to have been a big help."

"And you must remember, people with little distraction are able to concentrate better."

The young man's interest in the mechanical field began when he started listening to short wave broadcasts between ham, or amateur operators.

The Washington Radio Club welcomed him and Irvin soon passed the tests for his amateur radio license. Later he set up his own station, W3HQG, with a 1,000-watt transmitter.

Less Fortunate
In his off hours, Irvin puts his time to helping others, "less fortunate than I."

During World War II he re-

laid messages over his little station for countless servicemen who wanted to get word to their loved ones. He set up separate schedules to handle calls relayed from Europe and Japan.

None of the folks he played "neighbor to" were aware that Irvin was sightless.

Eleanor is famous in her own right. She has written a number of well circulated poems.

Irvin is humble and his outlook on life is admirable.

"I'm grateful for all my blessings," he says. "And if I were to die tonight, I would thank God that I have lived a rich and full life."

As for Eleanor, Irvin says: "It's wonderful to have a seeing-eye wife."

HOW CHRISTIAN SCIENCE HEALS

Station KWIN 1400 K.C. Sundays 10:15 A.M.

-nope, I'm saving my opinion on the Spring clothes 'til mummy comes back from

Parker Woods' **Leons Tots to Teens** 105 E. Main St.

HERADOBIER'S fine furniture

TELEPHONE 8771

• MAPLE FURNITURE and LAMPS •

Save time... Save work... SAVE DOLLARS!

Youngstown Kitchens
Big, all-steel 66" CABINET SINK
\$139.95
Complete with lowest and most modern accessories

\$194.95 VALUE

- Twin, 7-3/4 splash bowls.
- One-piece, acid-resisting, porcelain-enamelled steel top.
- Swinging mixing-faucet, chrome finished.
- Fluted, no-tip drainboards.
- Two spacious drawers.
- Five roomy storage compartments.
- All-steel construction throughout.
- Easy-Y handles, chrome finished.

Limited Time Only!
IMMEDIATE DELIVERY

NOTHING DOWN!
36 Months to Pay!

NATIONALLY ADVERTISED!

Youngstown Kitchens
Your Youngstown Kitchen Center
Smith-Dynge Lumber Co.
Fir & 8th St. Phone 2-7166

IT'S NEW! SEE IT NOW!

FORD's Mounted Side Delivery Rake

Here's Ford's new Mounted Side Delivery Rake. It means easier operation for you, because the rake is mounted on the Ford Tractor, raised and lowered by Ford's Hydraulic System. It's power take-off driven, and there's a speed change provision to give you correct operation. And it means less leaf shattering because Ford's new reel design moves the hay a shorter distance from swath to windrow. There are many other new features, too, such as the new rotary stripper that does a thorough, uniform job.

IT'S HERE—

The new FORD rear-attached MOWER!

Quiet, smooth-running, efficient for TOP MOWING PERFORMANCE

You'll like the way this new mower operates... its ease of mounting and dismounting... its high transport clearance... and above all, its smooth, quiet operation and its fast, clean mowing performance. Easy-to-make adjustments are provided to help you operate at peak efficiency in any crop or condition.

Two models are available to suit your needs. The Ford "56", used with narrow wheel spacing, is excellent for all types of mowing. The Ford "76", used with wide wheel spacing, provides greater convenience in changing from cultivating to mowing, and greater stability for hillside mowing. Both models are available with 6' or 7' cutter bar, heavy duty or standard guards.

See one of these mowers operate... ask for a demonstration on your own farm.

It's Deaver Tractor For Top Hay Tool Values!

IT'S NEW!

SEE IT NOW!

FORD's Mounted Side Delivery Rake

New!

FORD "250" Hay Baler

BARGAIN PRICE PTO or Engine Drive

IT'S HERE—

The new FORD rear-attached MOWER!

Quiet, smooth-running, efficient for TOP MOWING PERFORMANCE

You'll like the way this new mower operates... its ease of mounting and dismounting... its high transport clearance... and above all, its smooth, quiet operation and its fast, clean mowing performance. Easy-to-make adjustments are provided to help you operate at peak efficiency in any crop or condition.

Two models are available to suit your needs. The Ford "56", used with narrow wheel spacing, is excellent for all types of mowing. The Ford "76", used with wide wheel spacing, provides greater convenience in changing from cultivating to mowing, and greater stability for hillside mowing. Both models are available with 6' or 7' cutter bar, heavy duty or standard guards.

See one of these mowers operate... ask for a demonstration on your own farm.

Pays for itself on fewer acres

Now you don't have to grow big acreages of hay in order to justify the cost of an automatic hay baler. The new low-cost Ford 250 Hay Baler in either PTO or engine model will help you to keep your baling costs down. Besides being low in cost, these balers are simple and easy to adjust, operate and maintain. And they do an excellent job of making firm, uniform, well-shaped bales that are securely tied for easy handling and storing. PTO Model is efficient behind 2-plow size tractor. Engine Model is powered with dependable 15 horsepower engine.

convenient terms available

Now on Display Come in now and see this new baler. Find out how easy it is to own!

WE ALSO INVITE YOU TO INSPECT THE—

NEW 800 series

FORD TRACTORS

Full 3-plow power

NEW 600 series

and the FORD TRACTORS

Full 2-plow power

DEAVER Tractor and Implement Co.

634 North Central Your FORD TRACTOR Dealer Since 1941 Dial 2-6425