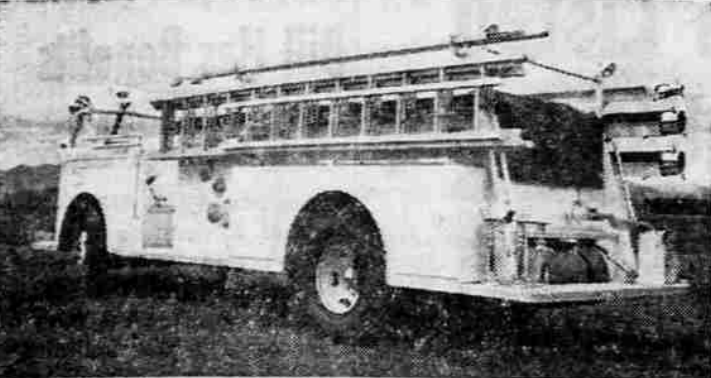




NEW FIRE STATION—Open House will be held at the new Central Point Rural Fire Protection district's White City station next Saturday, April 21, between 10 a.m. and 8 p.m. The station, modeled after the present station just south of Central Point, will serve when and where needed in the district, according to Fire Chief Richard Krupp. Equipment shown above includes, from left to right, the department's jeep, tank truck, pumper and the district's new 1,000 gallon-per-minute class A pumper made by American LaFrance.



NEW AMERICAN LAFRANCE—The 1956 American LaFrance fire engine shown above is among the latest additions to Central Point Rural Fire Protection District's equipment. The vehicle will be on display at the district's open house at the new White City station Saturday, April 21. The truck is a 1,000 gallon-per-minute class A pumper which carries 1,500 feet of 2½ inch hose, 500 feet more than is usually carried on such trucks. The vehicle is equipped with two suction hose sizes and a 35-foot three-section extension ladder. Fire Chief Richard Krupp said such a ladder was needed by the department because of tall buildings such as barns and industrial structures.

Open House at White City Fire Station Next Saturday

Central Point—The Central Point Rural Fire Protection district will display its equipment, including a recently purchased American LaFrance pumper, at an open house at the district's new White City station Saturday, April 21.

The station is designed after the present building just south of Central Point, which was designed by William Laing, architect who has since retired and moved from the valley. The structure was built by James H. Henson, general contractor of Central Point, on land donated by the White City Realty company at the corner of Avenue G and Agate rd.

Volunteer Equipment
Available to explain equipment and serve refreshments between 10 a.m. and 8 p.m., Fire Chief Richard Krupp said.

Among pieces of equipment at the White City station next Saturday will be the 1,000-per-minute class A pumper. The 1956 American LaFrance engine carries 1,500 feet of 2½-inch hose, 500 feet more than is usually carried on that type equipment.

The truck is loaded so it can be used either in pumping from draft, such as mill ponds or streams, or from hydrants. Krupp pointed out that such a vehicle was desirable because there are an increasing number of water districts being formed within the fire protection area which are providing hydrants.

Extension Ladder
The truck is loaded so it can be used either in pumping from draft, such as mill ponds or streams, or from hydrants. Krupp pointed out that such a vehicle was desirable because there are an increasing number of water districts being formed within the fire protection area which are providing hydrants.

as the above arguments should indicate, unfortunate. Not only does it encourage them to put ceilings on their abilities and their goals but it more often leads to discontent than to satisfaction.

Far better is the policy of "wait-and-see" unless you are completely satisfied with what the present has to offer. Even in such a simple matter as buying a spring hat, it is better to look around, see what is available within the price range you can afford to pay for the hat, and follow the "bird-in-the-hand" policy and grab what is available at the moment. Both extremes are likely to lead to dissatisfaction in the long run.

The persons who grab at what is handy often see something he likes much better later and then wishes he had been more patient and waited for it. But it is usually too late.

Limits Abilities
Encouraging people to follow the "bird-in-the-hand" policy is,

In addition to a regular 6-inch suction hose, a 2½-inch suction hose also is provided to make possible smaller pumping jobs. The truck includes a 35-foot three section extension ladder, the first such ladder the district has had. Krupp pointed out that an extension ladder is necessary because of barns and other tall buildings in the district.

The truck is equipped with a two-way radio, which brings to 15 the number of two-way radios in the department. It will be moved between the Central Point and White City stations as the need varies throughout the year, Krupp said.

Because the truck was designed by a fire truck manufacturer, it is one of the most simple to operate, despite the fact it is the largest vehicle in the department, Krupp said.

"It is the kind of truck which normally is expected to serve for 20 years or more," Krupp said.

Serve District
The White City station, Krupp pointed out, will serve the entire district, and equipment will be dispatched when and where needed. He said the new station may result in some fire insurance reductions in certain areas of the districts.

Krupp pointed out that fire alarms should be called into the Central Point station — Normal 4-1234, the number common to both the rural and city departments at Central Point. After a call is received, the location is pinpointed, and equipment dispatched from the nearest station.

In the event of a major fire, he said, equipment from several stations, including the Central Point city department through the Mutual aid agreement, will

respond. A recent example of the mutual aid agreement was when the Central Point City department stood by for the rural department during the fire at the Tolo sawmill.

Calls Relayed
Fire calls are relayed from the rural to city department by telephone, and to the White City station by two-way radio with a telephone as an emergency auxiliary. Each building in the rural department is equipped with an automatic device which alerts personnel in the event of an electric power failure. The district has standby electric generators which are placed into service immediately.

The emergency generators are carried on one truck for use at fires, and are constructed for use of two-way radios and lights.

The district, which includes about 80 square miles, should have about 40 volunteers, Krupp said, and there are some vacancies. He pointed out that volunteers are covered by insurance, and in addition to regular fire drills, there are several social activities for volunteer firemen.

Turn-Out Clothing
Turn-out clothing is issued to each volunteer, and those living in certain areas are issued two-way radio receivers which monitor the alarm system, which serves as a private alarm system. Volunteers may contact either station for information concerning the department.

L. C. Lisenbee and Jim Scott will be the paid firemen at the White City station, and will work on alternate 24-hour basis. Mr. and Mrs. Nate Grisham are on duty full time at the Central Point rural fire hall.

Equipment at White City includes a jeep, tank truck and a pumper, in addition to the American LaFrance pumper.

Temporary Officers Named for CP Jaycees

Central Point — A temporary organization preliminary to the formation of a Central Point Junior Chamber of Commerce was held last week, and temporary officers elected. They are Dick Krupp, president; Cecil Sharp, secretary, and Bill Coley, publicity.

The next meeting will be held Thursday, April 19, at the fire hall, and all interested in forming a club are invited. Proposed by-laws will be presented by a committee headed by Larry Allen, of the Medford Jaycees. Other Medford members present, who discussed the objectives of the group, were Ron James, Tom Reeder, Charles Jones, Monte Stram and Dick Bowers. About 35 men attended the meeting, which was Thursday evening.

Man Was Ideal Husband To Each of 4 Wives

London — U.P. — A judge let George Herbert Walker off with a \$56 fine and a brief lecture about bigamy when three of his four wives said he had been an ideal husband to each.

Asked for his success formula, Walker said: "I kept each of my wives happy by never answering back, never asserting myself and always giving them plenty of housekeeping money."

Only about one woman in every 250 is color blind.

HOW CHRISTIAN SCIENCE HEALS

Station KWIN 1400 K.C. Sundays 10:15 A.M.

Now that science has increased your life expectancy...



Here's how YOU can make living longer more enjoyable!

New York Life's low premium Whole Life insurance can help make your later years your most carefree years by providing you with a lifetime income at retirement!

This modern Whole Life plan is the ideal way to supplement income from your other life insurance policies, your company pension plan, other savings and Social Security. And until you retire, it offers substantial life insurance protection for your family... provides cash values that can be used for an emergency, too.

Get the facts from me on this Whole Life insurance that can offer you a brighter tomorrow — at a cost you can afford today!

write... telephone... or visit

A. H. Hiebert
SPECIAL AGENT
NEW YORK LIFE
INSURANCE COMPANY
Phone 2-7573
P.O. Box 131

Use Tribune Want Ads

Schools Must Certify Veteran Attendance

The responsibility of schools to certify attendance of veterans attending under state aid was reiterated today by County Service Officer Charles D. Holbrook.

He said word has been received from Raymond Petty, Salem, educational officer, that some schools have not been verifying the actual attendance of veterans attending under state veterans educational aid.

Holbrook added that it is the responsibility of the school to certify the actual number of class room hours for all such veterans, and reports must be in the Salem office by the 10th of the month following the veteran's attendance.

Oregon Insurance Men Attend Meeting Here

Five state officers of the Oregon Association of Insurance Agents spoke at a meeting of Jackson County Association of Insurance Agents at the Rogue Valley Country club last week.

Here were William B. Johnson, president of the state group; Leonard Adams, chairman of the executive committee; Harold B. Larson, state national director; E. M. Stadel, executive secretary; and Alan Tebb, assistant executive secretary.

Discussions centered on last year's work and plans for the coming legislative year in regard to education, legislation, and coordinated state-wide advertising.

As We Live

By ELIZABETH HURLOCK, PH.D.

Bird-In-The-Hand Policy May Mean Dissatisfaction

There is an old saying that "a bird in the hand is worth two in the bush." The implication of this saying is that one should grab when the grabbing is good and not make the mistake of waiting for something better which may or may not materialize.

The belief that one should take what is available encourages people to set their goals within the limits of what they can do without consideration of potential future possibilities. All this, you may argue, is for the best. After all, if people set goals beyond their immediate present, aren't they apt to try to reach for the moon and then be bitterly disappointed if they do not get it?

True, it is bad to reach for the moon by having goals so unrelated to one's potentialities that they are impossible. On the other hand, it is just as bad to follow the "bird-in-the-hand" policy and grab what is available at the moment. Both extremes are likely to lead to dissatisfaction in the long run.

The persons who grab at what is handy often see something he likes much better later and then wishes he had been more patient and waited for it. But it is usually too late.

Limits Abilities
Encouraging people to follow the "bird-in-the-hand" policy is,

Mrs. J. C. M.

(A) As a general rule, you might say that because a person is "grabby," looking out for his own interests ahead of those of others, he gets more in the long run and that is why he has more than those who are less "grabby." People who have a strong desire for material possessions, as a means of increasing their feelings of self-importance, have a tendency to accumulate all they can, regardless of whether this is at the expense of others. Thus they inflate their egos and make themselves feel more important.

Rowdiness: "In our neighborhood, there are some teen-age boys who like to crash parties and mess up the houses. Most of the parents refuse to call the police when this happens to them. Do you think this is wise?"

T. W. C.

(A) A boy who destroys property willfully, and this certainly is true of a boy who belongs to a teen-age gang, should be subject to the treatment provided by the law, regardless of whether he comes from a good family or not. If I were in your place, I would certainly report such actions to the police if a gang molests your home or a home where any of your children happen to be guests.

Moving: "My husband has taken a new job. This happens at least twice a year. This new job is out of town and he wants me to move now. I claim he should try out the job and see if he likes it and they like him before we move. Do you think this is being fair to him?"

L. M. R.
(A) As your husband's past work experiences has been such that you have no assurance that he will stay in this job for any length of time, I think you are wise to follow the "wait-and-see" policy. If, after a reasonable length of time, all seems well, then you can consider making the move. Moving is too expensive and too much work to be undertaken without good reasons.

(COPPRIGHT 1956, GENERAL FEATURES CORP.)

4-H Club News

Upper Rogue 4-H Club
The Upper Rogue 4-H club met May 9 at the home of Robert Piele. Discussion was held on parasites and diseases of cattle. Refreshments were served and plans made for the next meeting, May 14, at the home of Mary and Judy Leekey.

Dead line Sunday Classified is at noon Saturday; 10 a.m. Monday for Monday; other days 5:30 previous day.

1/2 PRICE SALE

On Used GAS RANGES

- 1 Wedgewood . . . Reg. \$39.50.....Now 1/2 Price **\$19.75**
- 1 Crown Reg. \$39.50.....Now 1/2 Price **19.75**
- 1 Wedgewood . . . Reg. \$44.50.....Now 1/2 Price **22.25**
- 1 M-W Combinaton Wood and Gas Reg. \$59.50.....Now 1/2 Price **29.75**
- 1 Magic Chef . . . Reg. \$49.50.....Now 1/2 Price **24.75**
- 1 Chamber's Wood and Gas Combination . . . Reg. \$69.50.....Now 1/2 Price **34.75**
- 1 Universal Reg. \$29.50.....Now 1/2 Price **14.75**

FOR CITY GAS OR TANK USE!

UTILITY SERVICE

CALIFORNIA-PACIFIC UTILITIES COMPANY

MEDFORD, OREGON PHONE 2-5284

IT'S HERE NOW!

THE Amana PLAN FOR BETTER LIVING

CHECK This New, Different Freezer-Food Plan!

PLUS...

- ✓ Dependable Local Dealer — MARINE MARVAIR... eight years an AMANA Dealer.
- ✓ Reliable Local Food Supply — JOHNNY JOHNSTON of CRYSTAL MARKET — selling choice, guaranteed, quality frozen foods.
- ✓ Get Quality Frozen Foods at Thrifty "Economy-Quantity" Prices!!
- ✓ SAVES you TIME, EFFORT and MONEY — Reduces tiring trips to the store!
- ✓ You can freeze BIG QUANTITIES of food at their LOW Seasonal Price!

The Amazing Amana

- ✓ Stor-Mor Door
- ✓ 6 Fast Freeze Surfaces
- ✓ 5-Year Freeze Warranty
- ✓ 5-Year Food Protection Plan

Backed by a Century-Old Tradition of Fine Craftsmanship

The Only Freezer Guaranteed to Outperform ALL OTHERS!!

CONVENIENT BUDGET TERMS FOR BOTH FOOD and FREEZER

CALL 2-4922 For Full Details — Amana's Famous MEAL-A-MAGIC COOK-BOOK with 365 fascinating new recipes will be delivered FREE to the first FIFTY People who CALL! CALL 2-4922 For A BETTER WAY of LIVING.

MARINE-MARVAIR

220 West Main St. **OPEN WED. EVES., 'TIL 9** Phone 2-4922