

IF YOU'RE NOT TRADING AT THE GROCETERIA YOU'RE PAYING TOO MUCH!

5 BIG FREE PARKING LOTS
Ask About Extended Free Parking for Other
Downtown Shopping

GROCETERIA

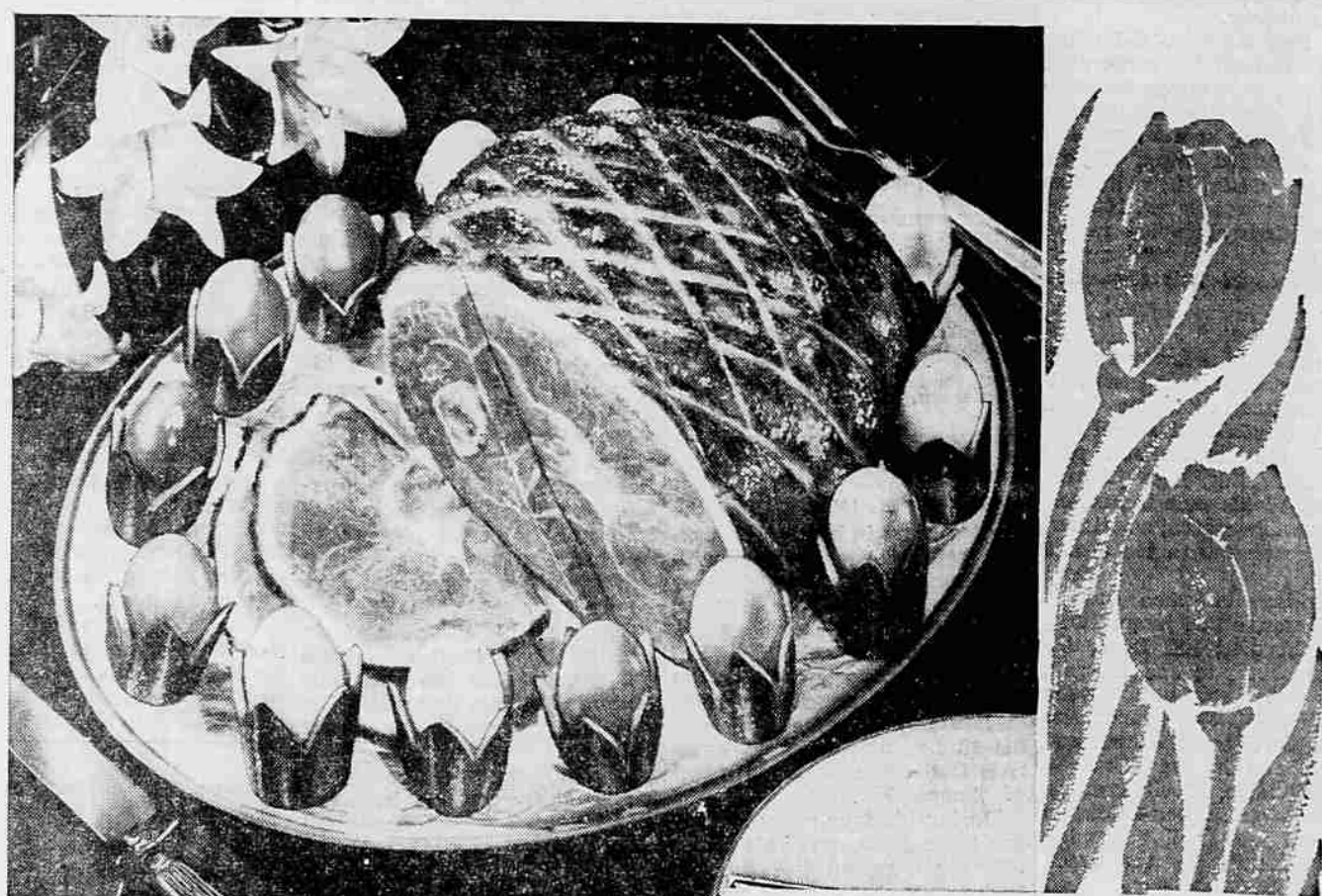
SIXTH AND GRAPE STREETS
OPEN 7 DAYS A WEEK UNTIL **9** P.M.

YOUR GROCETERIA Offers These . . .

TRADITIONAL FAVORITES FOR

Easter Meals

Flavorful, Succulent Ham . . . Bacon with that Sweet Smoke
Taste . . . Fresh Selected Eggs. We have ALL the Traditional Foods
you need for Perfect Easter Meals. You'll be proud to serve these
Delicious Foods! Your family will love them!



SWIFT'S PREMIUM or MORRELL'S EZ CUT BRAND

HAMS Fully Cooked Ready To Eat Small Size No Waste To Buy **53^c lb.**

ARMOURS STAR, HORMELS DAIRY, CASCADE PURETS, SWEETHEART, MEDFORD MEAT brands

HAMS TENDERIZED SHORT SHANK Small Sizes, 10 to 14 Lbs. Serve With Luscious Louisiana Red Yams **49^c lb.**



LOUISIANA KILN DRIED

No excess weight to buy

RED YAMS **15^c lb.**

SERVE FOR EASTER WITH A LUSCIOUS GROCETERIA HAM

Vegetables Are FRESHER AT THE GROCETERIA!

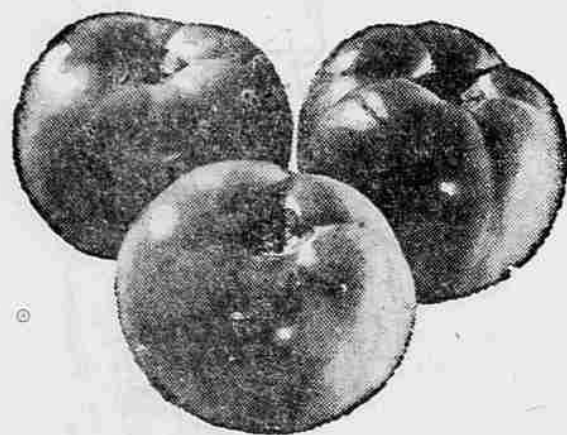


Yes, it looks like Springtime at the Groceteria. If Produce Is Any Fresher in town, it hasn't been picked yet. Our suppliers pick the best in the markets. Carefully load it in refrigerated trucks, and speed it to us, where it is handled with loving care, and displayed in our refrigerated cases for your selection.

Direct from Arizona Come These Sunshine Specials

GREEN ONIONS RED RADISHES MIX 'EM UP **3 BUNCHES 19^c**

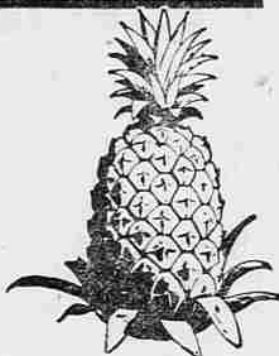
FRESH MUSTARD GREENS 10c bunch



CARTON **Tomato** SALAD SIZE **29^c Carton**

HAWAIIAN PINEAPPLES

10^c Pound



An EASTER TREAT!
YOUNG EXTRA FANCY No. 1

GENUINE BELTSVILLE

HEN Turkeys

SMALL SIZES 6 to 9 lbs.

OVEN READY Fresh Frosted

49^c lb.

GENUINE 1956 SPRING LAMB—THE PICK OF THE FLOCK
LEG-O-LAMB U.S. Graded Choice RIB CHOPS 89c lb. **83^c lb.**

FRESH PACKED Saves time more economical than in the shell **CRAB MEAT** **\$1⁰⁹ Lb.**

GROCETERIA'S "OWN"—LEAN, FRESH MADE Made in Our Own Shop We Know Its Good **Smoked Sausage** **53^c lb.**

HORMEL'S DAIRY BRAND—COOKED, READY TO EAT **Canned Picnics** 4 Pounds Solid Meat **\$1⁹⁸ Ea.**

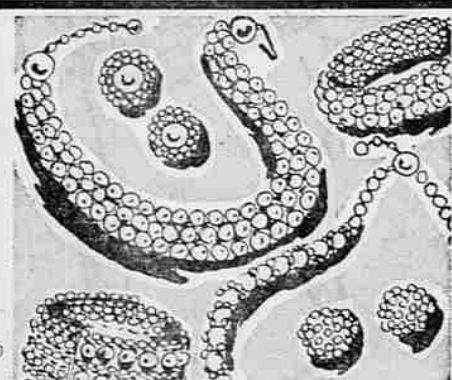
U.S. GRADED CHOICE STEER—AGED TO PERFECTION **PRIME RIB ROAST** **59^c lb.**

MEDFORD MEAT TASTY BRAND—SPRING TIME The Ideal Easter Breakfast **Bockwurst SAUSAGE** **55^c lb.**

BONELESS, PROPERLY AGED—U.S. CHOICE GRADE Cut from the finest beef **TOP SIRLOIN STEAK** **\$1⁰⁹ Lb.**

YOUNG, TENDER U.S. GRADED CHOICE **BEEF LIVER** **39^c lb.**

MEAT PRICES GOOD THROUGH SATURDAY OR UNTIL STOCKS ARE EXHAUSTED



Easter Costume Jewelry

IS HERE!

Beautiful Creations In Color To Match Your Easter Costume A FINE SELECTION—

98^c Plus Tax

Also now in stock the new pastel colors plastic popout necklaces. Adjustable to any size. Can also be made into bracelets.