



**PARADE OF PROGRESS**—The General Motors Parade of Progress will be at Hawthorne park in Medford March 24 through 27. The

admission free, educational show, contains many exhibits illustrating American progress brought about by industry.

### Traffic Deaths Keep Pace With Accidents

Salem — (U.P.) — Oregonians traveled a half billion miles over state roads in January and traffic deaths more than kept pace with travel on a per mile basis.

Figures released by the State Traffic Division showed 5.4 persons were killed in each 100 million miles of travel this January compared with an even five deaths per 100 million miles for the same month a year ago.

Secretary of State Earl T. Newbry pointed out the death rate figures gave a very true picture of the state's traffic scene since it represented the number of deaths in relation to miles driven.

### Culbertsons Purchase Williams Creek Dairy

Several real estate transactions were announced last week from the Medford Branch, Southern Oregon Land company by G. G. Barbee and Ken Calhoun.

Mr. and Mrs. Cecil Culbertson, until recently of Medford, purchased a Grade A dairy on Williams creek in the Applegate from Henry Bennett.

New country homes have been purchased in the Oak Grove school district by Mr. and Mrs. D. C. McMichael, who lived in Medford on Almond st.; Mr. and Mrs. Jack Schiro, formerly of Beatty st., and Mr. and Mrs. Earl L. Hill, Winchester ave. The latter couple will move to their new home in about three weeks.

### Wood Industries Topics Due for Talk at Session

Subjects of interest to sawmill and construction men, and other users of wood, will be discussed in the wood industries division of the American Society of Mechanical Engineers at Multnomah hotel, Portland, March 19-22.

Representatives from various phases of the profession will speak and field trips will round out the program, according to George Atherton, reporting representative of the Wood Industries Division, ASME.

Use Mail Tribune Want Ads

**OK MARKET**  
1202 North Riverside  
**OPEN EVERY NIGHT TIL MIDNIGHT**

### Spring Registration Scheduled at College

Ashland—Registration for the spring term at Southern Oregon college will begin Monday at 9 a.m. and conclude at 4 p.m. the same day, Mrs. Mabel Winston, registrar, has announced.

Because of swelling enrollments each term and the need for more help in processing the enrollees, Mrs. Winston said the student body council would volunteer its services. The group will be under the direction of Jim Womack, Klamath Falls, SOC student body president.

Student council members are Anna May Walters, Bob Anglin, Chuck Weir and Jack Rawls, Grants Pass; Walt Hurst, Glendale; Ron Lamb, Medford; Howard Cain, Ann Munson, Klamath Falls; Don Lawrence, Junction City, and Bob Myrick, Ashland.

### Warnke Resigns From Medford BLM Office

John C. Warnke, forester since 1950 for the Bureau of Land Management, in charge of the southeast unit of the Medford forest district, has resigned to accept employment with the logging and lumber concern, Puckett and Scherer, Klamath Falls logging concern.

Walter Gavin is serving as acting unit forester in the vacancy created by Warnke's resignation. Gavin is a graduate of the school of forestry of the University of California, and commenced work with the Bureau of Land Management in Medford in June, 1952.

## Parade of Progress Show Due in Medford March 24

General Motors Parade of Progress, an admission-free scientific circus now on nationwide tour, will be shown at Hawthorne park from 7-10 p.m. March 24, and from 2-10 p.m. March 25 through 27.

The parade consists of scientific, educational exhibits and a 40-minute stage show, all portraying industry's achievements in the fields of chemistry, physics, electronics, engineering and aviation. It tells how the American way of life has changed during the past half-century and how it will possibly be altered even more in the future.

Medford will be the 134th city visited by the parade in its current tour across the nation.

The show has 46 vehicles, including 12 especially designed Futurliners (streamlined vans with paneled sides that open to form stages), 11 tractor-trailers, 5 trucks, and 18 passenger cars which transport all the equipment and personnel of the parade. Sixty men are required to operate the show.

### Jet Engine

Major displays range from jet engines to basic principles of science, from synthetic rubber which is made in a pop bottle, to a demonstration of a motor that runs on sunshine and a

## Bate Lumber Firm Is High Bidder On BLM Timber Sales

Bate Lumber company of Merlin was high bidder for three of the four tracts of timber offered for sale by the Bureau of Land Management at their Medford office March 15.

The four tracts, containing an estimated 7,672,000 board feet, were sold for \$343,730.20, or an average price of \$44.80 per thousand board feet.

In the first oral auction sale, Bate topped five other bidders with bids of \$50 per thousand board feet for Douglas fir, \$29.55 for ponderosa pine, \$40.10 for sugar pine, \$9.40 for incense cedar, \$11.90 for white fir and \$10.20 for western hemlock. The sale consisted of an estimated 2,687,000 board feet composed almost entirely of Douglas fir timber located in the Quines Creek area of southern Douglas county.

### \$47.25 for Fir

An estimated 1,296,000 board feet of timber near Azalea, composed almost entirely of Douglas fir, was sold to Bate Lumber company for \$47.25 per thousand board feet for the Douglas fir, \$8.70 for incense cedar and western hemlock and \$11.20 for white fir. Four other bidders competed.

Dollar and Patterson company, Inc., Glendale, was the highest of three bidders for an estimated 3,539,000 board feet of timber on Dads Creek in Douglas county. About three-fourths of this tract is Douglas fir. High bid was \$45.50 for Douglas fir, \$37.70 for ponderosa pine, \$33.55 for sugar pine, and \$7.40 for incense cedar.

Windfall Timber Approximately 150,000 board feet of Douglas fir snags and windfalls located on Murphy creek, near Murphy was sold on a scale basis because of the difficulty of determining the sound volume in the snags, which were killed by fire in 1945. Bate Lumber company bid \$12 per thousand for this tract. Only one other bid was submitted.

The next regular sale will be held by the Medford district of the bureau April 19, at which time two tracts containing an estimated 4,857,000 board feet will be offered for sale. One tract is located on Coyote Creek in northern Josephine county and the other consists of salvage timber in the Sykes Creek burn area near Wimer.

Additional information regarding these sales may be secured from the District Forester's office in the Medford city hall.

stove that cooks food but never gets hot. Exhibits are of three general types, lecture demonstrations, synchronized sound-action animated exhibits and audience manipulated exhibits. Lecturers will discuss jet engines, principles of heat and cold, scientific fundamentals and how precision instruments aid in industrial progress.

One Futurliner exhibit demonstrates three-dimensional or binaural sound. Another, "The World of Science," will illustrate forces constantly exerted on the human body.

**Heat and Cold** "Miracles of Heat and Cold" exhibit show results of simultaneous 5,000 degrees above zero and 300 degrees below zero temperatures.

Voice and sound exhibits include those covering such subjects as transportation progress in the past half-century, diesel power and metallurgy. Exhibits that can be operated by visitors to the parade include a demonstration of the relationship of engine compression and fuel economy.

The main show, a science stage presentation in an aerodome tent, is given six to eight times daily, each performance lasting 40 minutes. This includes demonstrations of electronics, chemistry, physics, aviation and engineering.

The aerodome tent, in which the stage show is given, is a structure having no ropes, poles or obstructions on the inside to block the view of the 1,250 people it seats. It is built like an inside-out umbrella, having an aluminum frame on the outside which supports a fireproof "skin" of canvas on the inside.

### Grange

#### LIVE OAK GRANGE

The regular meeting of Live Oak Grange was held March 8, with Master Ray Frantz, presiding. Third and fourth degree work, which was to have been given, was postponed to the next meeting, night, March 22, and members and guests who attend are asked to bring sandwiches or cookies.

The charter was draped in memory of Mrs. Nellie Robinson, who died March 7. Visitors to Live Oak Grange were Mr. and Mrs. H. Densmore of Gold Hill and Mr. and Mrs. Dee Hendricks. All are members of Phoenix Grange.

During the lecture hour, Rollin Taylor presented some pictures of Rogue River, some of them taken when the city was known as Woodville.

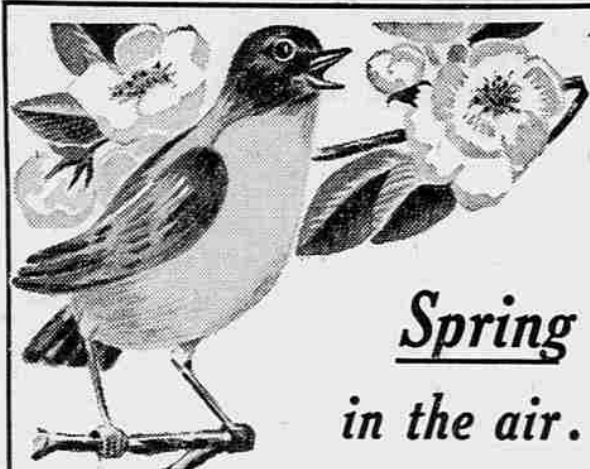
There was group community singing, readings by Pearl Lenderman and Othella Strahan, and a skit given by Frank Hall and Henry Corbin.

Edith Osborne was in charge of the committee serving refreshments.

### Murl Storms Returns From Portland Meeting

Murl Storms, Medford office of the Bureau of Land Management, has returned from a four-day conference of forest protection and reforestation personnel in Portland.

Men from the O and C districts of western Oregon studied all phases of fire prevention on O and C timber sale areas and devoted one day to evaluating methods of investigating man-caused fires and collection of damages caused by carelessly started fires.



*Spring in the air...*

### means Building in the Rogue Valley

Now that spring is here, new homes are beginning to grow up all over the Valley — and builders predict another record-breaking year in new-home construction.

If you are planning a new home — or planning to remodel the home you own — now is the time to finish those plans an begin. And when you plan your building — your budget is the first thing you'll think of.

To help you get the money you need for your building and repairs, Jackson County Federal has home-loan plans to fit your needs — and your budget. Jackson County Federal has helped build hundreds of homes in the Rogue Valley through easy, pay-like-rent home-loans.

**Jackson County Federal can help YOU build YOUR home**

**Jackson County Federal**  
SAVINGS & LOAN ASSOCIATION

126 East Main Medford Since 1909

Building with Jackson County Since 1909

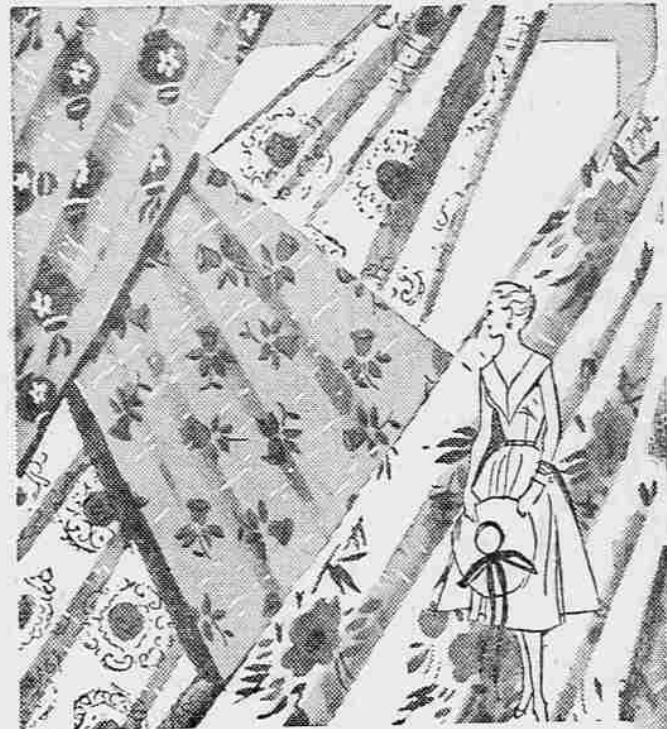
**HERTZ**  
RENT-A-CAR SYSTEM  
LICENSEE

**Daily's U-Drive**  
Medford Airport

# PENNEY'S

ALWAYS FIRST QUALITY

## SPRING FABRIC FESTIVAL



### Lovely Rayon-Acetate Blend! NUB-SHEER PRINTS

You'll love the fresh, crisp look of these Penney sheers that take wifing days, constant washing in their stride. Acetate - and - rayon blend is enhanced by subtle frosty-toned slubs. Dainty prints. Crease resistant.

**79¢**  
YARD



### TUFTED NYLON SHEERS

For Fashions of Distinction Choose Penney's Tufted Nylon Sheers. Easy to wash—quick to dry—little ironing necessary. The fabric is a very fine semi-crisp nylon sheer. The tufting is permanent. The latest spring colors.

**98¢**  
YARD

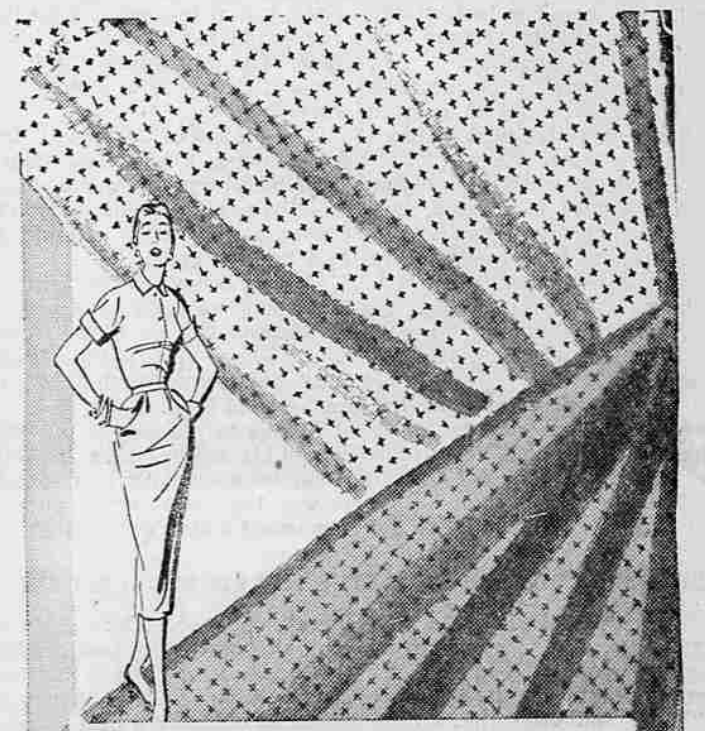


- Exclusively Penney's!
- Crease-resistant!
- Beautiful Colors

### PETI-PUCKER NYLONS WITH A FRESH, NEW GAIEY!

Beautiful Nylon Peti-Pucker Nylons in Both Plain and Printed that are a tremendous fashion success. An exceptionally well styled range of patterns—from cute novelties to striking florals. These nylons have a natural crease resistancy and are easy to launder.

**79¢**  
YARD



### 100% DACRON LENO DOT

Beautiful Penney Dacron Leno Dot that is ideal for dresses, blouses, curtains. Will stand direct sunlight. Easy to care for and has permanent flocking. Cool and comfortable. A must for Spring and Summer.

**1.49**  
YARD



Beautiful! Incomparably Incomparably Little-Priced!

### Rainbow-light and Lovely! PENNEY'S SHADOW PLAID

What's frosty-toned, cool-as-silk, light as a rainbow? Penney's Shadow Plaids! You'll love the silky-sheen of this acetate-and-cotton blend! Delicate tone-on-tone woven plaids in gentle pastels. Machine washable.

**98¢**  
YARD  
45 inches wide



Priceless beauty hard-to-match anywhere at this price!

### PETAL-LIGHT PONGEE IN ORIENTAL-LOOK PRINTS!

Priceless beauty, hard-to-match at this Penney-low price! Find prints touched with gold... jewel-toned solid colors to match. New, crease-resistant silky blend of acetate-and-combed cotton machine washes beautifully!

**98¢**  
YARD  
44-45 inches wide

**A PENNEY SPECIAL!!!**

**700 Yds. Rondo Percale** • Sanforized • Vat Dyed • Full Bolts **3 YDS. 1.00**

Manufacturer's Closeout of Discontinued Patterns