

Estimate \$80 Taken From Ruch School

An estimated \$80, mostly in \$1 bills, was taken from Ruch school Tuesday night, according to sheriff's deputies who investigated a series of school burglaries and attempted burglaries. Thieves took a small amount of change from the Oak Grove and Crater high schools, tore three doors off the Applegate school and ransacked desks, and forced entry into the Murphy school.

They failed in attempts to enter the Jacksonville high school and Jacksonville museum, deputies said.

Oregon Wine Production Increase 42 Per Cent

Portland — (U.P.) — Production of wine in Oregon has increased 42 per cent in the past five years, Administrator William H. Baillie told the State Liquor Commission yesterday.

The industry in 1950, he said, produced 150,618 gallons of wine. In 1955 the figure had risen to 215,052.

FINE IDEA

Oxford, Miss. — (U.P.) — Traffic fines collected on the University of Mississippi campus are channeled into a scholarship fund for needy students at the institution. More than \$1,000 was turned over to the fund last year.

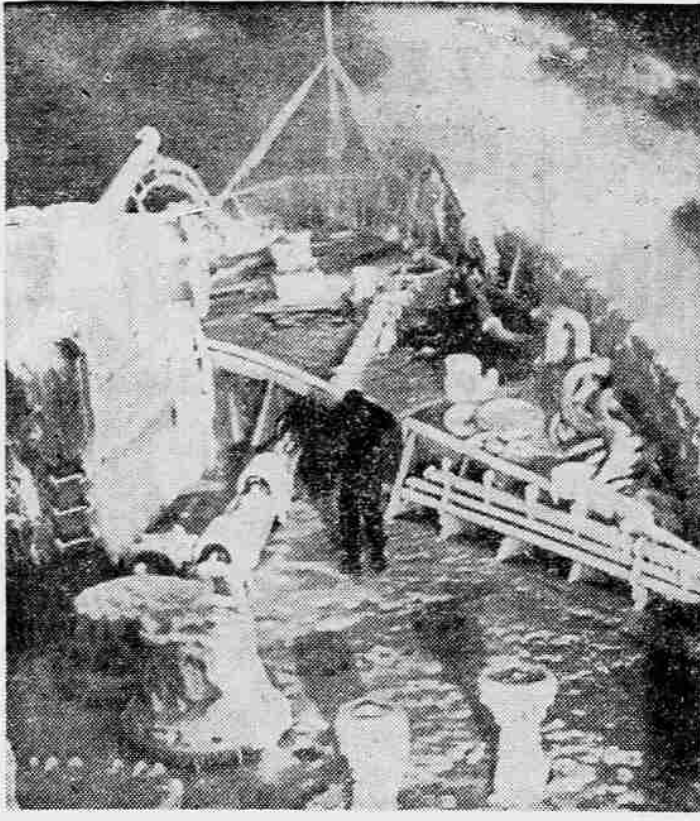
Lea Purchases Nash Agency in Medford

Purchase of Surroz-Nash agency by Paul E. Lea was announced today. Lea came here from Los Angeles where he was in business. Prior to that he was in the automobile business in Portland. The agency now is Lea Motors, Nash-Rambler sales, service and used cars.

For the past 10 years, the Leas have wanted to locate in Medford, he said today, and when the local Nash agency came up for sale he took advantage of the opportunity.

His wife and three children, Sonya, a high school student, Larry, a junior high student, and Marilyn, a second grader, will move here when school is out.

Vic Surroz, the former owner, will devote his time to his Grants Pass agency, according to the announcement.



BRRRR!—How would you like this fellow's job. He is a lookout aboard the ice-coated icebreaker USS Glacier and is scanning the sea ahead as his ship plows through heavy seas on her way to McMurdo Sound in the Antarctic. This U. S. Navy photo was taken Feb. 9.

Chamber Directors Adopt '56 Budget Totaling \$32,857

A 1956 budget totaling \$32,857 was adopted by the board of directors of the Jackson County Chamber of Commerce at a meeting this morning. It is \$9,200 larger than the one for 1955.

The budget was presented by Frank Bash, chairman of the budget and finance committee, after a review of chamber operations including the needs of committees for the coming year. Proposals Listed

The budget calls for \$21,390 for office operation including salaries, printing, supplies and office expenses; \$550 for memberships and subscriptions; \$800 for advertising and publicity; \$2,350 for printing of special brochures and folders; \$2,250 for traveling and other expenses; \$650 for committee expenses; \$500 for capital expenditures, and \$4,367 for promotional expenses which may arise through the year.

A report of the tourist and convention committee, presented by Mrs. Bert Pree, chairman, was approved by the board. It called for the expenditure of \$1,141, if and when it is available, for erecting signs to guide tourists to the chamber office, for preparation of local tourist information to be distributed to motels and hotels designed to encourage tourists to prolong their stay in the valley; for participating in cooperative advertising of the southern Oregon area, for development of mail "stuffers" about the area, to be included in business letters going out of the valley, and for starting work on a motion picture film for showing to groups and on TV stations in other areas.

To Name Committee

The board approved appointment of a special committee to study the proposal to add fluorides to Medford's water supply. Members of the board indicated they felt the chamber was in no position to take a stand on the matter, but wanted a committee to study it and report back.

The board also heard a brief report on the "Great Decisions" foreign affairs discussion program to start here March 25, and with which the chamber will cooperate.

Italian President Visits San Francisco

San Francisco — (U.P.) — President Giovanni Gronchi of Italy was a visitor in San Francisco today in fulfillment of a long cherished ambition.

"I have always wanted to come to San Francisco," he beamed. "Now at last I am here."

The 68-year-old president will be here only two days, but his crowded schedule will nevertheless give him a chance to see something of the Bay Area and to meet some of its leading citizens.

Gronchi arrived last night at San Francisco International Airport, after a flight from Detroit. With him were his wife; U. S. Ambassador to Italy Clare Boothe Luce; Italian Foreign Minister Gaetano Martino; and other officials.

Violation of Hours Charged To Hospital

Portland — (U.P.) — Multnomah county hospital last night was charged with "flagrant and open violation" of the 40-hour week.

Dallas E. Nollensch, president of the Multnomah County Employees Association, signed a statement which said the hospital worked nurses aides for six, eight or 10 days with compensatory time off at straight time rather than time-and-a-half. The statement also accused the hospital of violations of civil service laws, rules and regulations.

Members of the employees association asked the Civil Service Commission, the county commissioners and the district attorney to take action.

The geographic center of the United States is in Smith County, Kansas, at latitude 39 degrees, 50 minutes and longitude 98 degrees, 35 minutes.

One of Oregon's Oldest Pioneers Dies

Portland — (U.P.) — Funeral services will be held Saturday for Mrs. Mary Jane Clymer Taylor, 98, one of Oregon's oldest pioneers. Mrs. Taylor, who was born on a land claim 12 miles east of Salem, died yesterday. Her parents crossed the plains to Oregon in 1848.

An average passenger automobile tire wears out at the rate of three and one-half per cent per month.

Boy Suffers Injured Eye in Accident

David Shepherd, 16, son of Mr. and Mrs. Bart Shepherd, 2780 Lone Pine rd., is in Community hospital as the result of being struck in the eye by a BB shot in an accident last night near his home, according to a report from the family today.

It was not known yet today whether the wound is serious. The shot was to be removed from the eye this morning.

Use Mail Tribune Want Ads

FOR LEASE

Building Now Occupied by

Adrienne's

214 East Main Street

PHONE 2-2768

Beef Roasts 29¢ lb.

PLUS NORTHERN PREMIUM STAMPS

BUTTER

From the Yorkshire Farms of Iowa

69¢ LB.

PLUS NORTHERN PREMIUM STAMPS

Sliced Bacon 3 lbs. \$1.00

PLUS NORTHERN PREMIUM STAMPS

BACON Ends and Pieces 6 pounds \$1.00

LUMAN'S Where You Get the PLUS Savings of Northern Stamps

BEEF STEAKS 39¢ lb.

PLUS NORTHERN STAMPS

OLD FASHIONED Franks 3 lbs. \$1.00

PLUS NORTHERN STAMPS

M-D or Scot Tissue Limit 20 Rolls 10 Rolls \$1.00

LUMAN'S Where You Get the PLUS Savings of Northern Stamps

TUNA

VAN CAMPS

5 Large \$1.00 Cans

PLUS Northern Stamps

Fruit Cocktail

LIBBY'S

5 303 Cans \$1.00

PLUS NORTHERN STAMPS

Shortening

WHITE CAP BRAND PURE VEGETABLE

3 Lb. Can 69¢

PLUS Northern Stamps

STRAWBERRIES Oregon Brand Frozen 4 pkgs. 95¢

LETTUCE

10¢ head

PLUS NORTHERN STAMPS

CAULIFLOWER

15¢ head

CHEESE

PARTY TIME PROCESSED

2-lb. Box . . . 69¢

PLUS NORTHERN STAMPS

LUMAN'S—Your Northern Stamp Food Store



Store Hours—8 a.m. to 7 p.m.—Sat. 8 a.m. to 8 p.m. Sunday—9 a.m. to 7 p.m.

LUMAN'S

Independently Owned . . . Independently Operated

4th & Front

There's only one **SKIPPY**

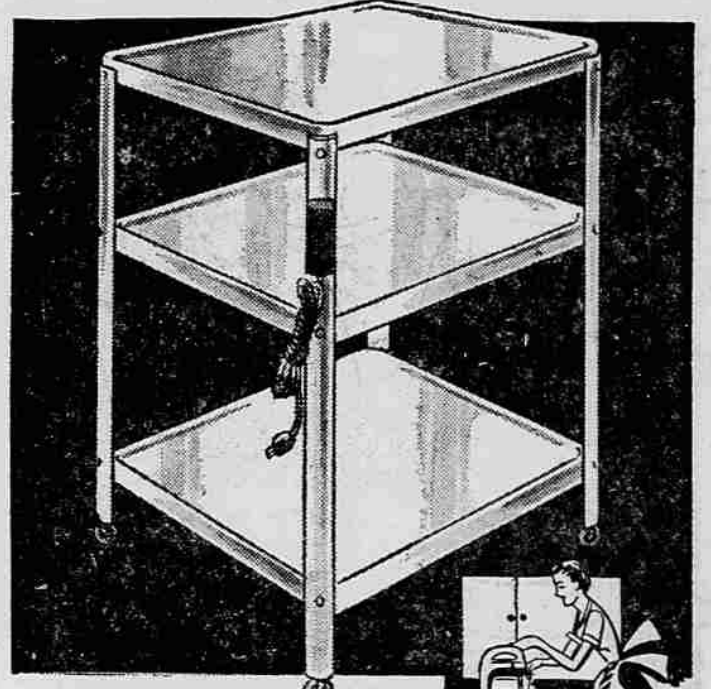
BEWARE OF IMITATIONS



LOOK FOR THE HAPPY LITTLE DOG

TOPS IN QUALITY!

LOW IN PRICE



ENJOY EXTRA WORK & STORAGE SPACE IN YOUR KITCHEN!

Have the convenience of a sturdy, metal table to use for storage, extra work and serving space. It has casters and can be easily moved. Finish is hard baked enamel. It is durable, easy to wash.

4.99

Reg. 5.95

25¢ A WEEK

WEISFIELD'S
Demonstration and Sale!
FACTORY TRAINED REPRESENTATIVE DEMONSTRATING THE NEW



The Only Shaver With a 5 YEAR Service Guarantee

See the Shavemaster demonstrated and find out for yourself how the big, smooth single head gives a different, more effective shave. Try the gentle, massage-like motion that is so close, fast, clean!

7.50 TRADE-IN

For YOUR OLD SHAVER REG. 29.95 LESS TRADE-IN 7.50

YOU PAY ONLY

22.45

50c a Week



WEISFIELD'S
THE WEST COAST'S LARGEST CREDIT Jewelers

122 EAST MAIN STREET Open Daily 9:30 a.m. to 5:30 p.m.