

Dulles Rejects Charges of Rosy Foreign Picture

Washington—(U.P.)—Secretary of State John Foster Dulles today rejected Democratic charges that he has painted too rosy a picture of free world successes in dealing with Russia.

Dulles told a news conference, however, that it would be disastrous to be complacent because Soviet strategy could quickly return to the violent policies of Stalin.

All indications, however, are that Russia's new policies of non-violence are intended to be permanent, he said.

Dulles also said the United States, Britain and France have a good understanding of lines of action for coping with the Arab-Israeli dispute but that no war plan has been agreed on for use in case of violence.

Dulles was asked to comment on charges by Democratic senators that he has been too optimistic in attributing radical changes in Soviet policy to failure of former Red policies and the strength of the free world.

Dulles said he would not agree that he had been too optimistic. He also disputed whether his optimism has hurt chances for a new foreign aid program.

Dulles told the newsmen the administration plans to ask soon for a congressional commitment of 5 to 10 years on long range foreign aid spending. He maintained that chances for getting congressional approval of this long range aid are good, but he would not predict the form of approval.

Democratic Warning

Dulles said there are no plans now for Vice-President Richard M. Nixon to travel to the Middle East, as planned before President Eisenhower's heart attack.

Earlier, Sen. Mike Mansfield (D-Mont.) warned that Dulles was endangering the foreign aid program with overly optimistic statements about the success of U. S. foreign policies.

(See Story on Page 5)

Identical Crashes Of Army Bombers Fatal to 15 Men

By UNITED PRESS

Two huge Air Force bombers exploded and crashed into farm houses in almost identical smash-ups last Monday and 15 men were killed.

The disasters occurred hundreds of miles but only three hours apart.

Near Dayton, O., a four-engine B50 crashed and skidded wildly into three farm buildings carrying 11 men to their deaths.

Three hours later, near Sedalia, Mo., a flaming B47 Stratofortier sheared off part of a farm home and crashed. The four-man crew was killed and a farm mother and her son were burned.

In both cases, the bombers had taken off on routine training missions only minutes earlier—10 minutes in Ohio and 11 minutes in Missouri. The planes appeared to develop engine trouble at almost exactly the same time and were trying to return to their bases when they crashed.

Another air tragedy was narrowly averted hours earlier in the Midwest. Seven crewmen bailed out of a refueling tanker plane when its No. 1 engine caught fire, but the craft made a safe landing at the Olathe, Kan., Naval Air Station.

Sen. Kilgore of West Virginia Dies

Washington—(U.P.)—Sen. Harley M. Kilgore (D-W. Va.) died today at Bethesda Naval hospital after suffering a cerebral hemorrhage. He was 63.

Kilgore, chairman of the Senate Judiciary committee, entered the hospital Feb. 13 for a physical checkup and treatment for high blood pressure.

He unexpectedly suffered a stroke last Saturday afternoon and was in a state of semi-coma almost continuously until his death at 2:23 a. m. (EST).

His administrative assistant, Harold C. Miller, said only a doctor was present when death came. Members of the senator's family were with him during the day.

Kilgore's death narrows the razor thin division in the Senate to 48 Democrats and 47 Republicans.

Old Forest Grove School Razed by Fire

Forest Grove—(U.P.)—A three-hour fire last night razed the old South Park high school here. One fireman was injured when he was knocked from a ladder at the height of the blaze.

Flames, which for a time threatened neighboring properties, shot high into the air. More than 75 firemen helped fight the blaze.

Cause was undetermined.

Roy Thompson, 45, assistant fire chief, was knocked from a ladder and taken to a Hillsboro hospital where his injuries were described as serious.

The three-story, half-block building was purchased last year by St. Anthony's Roman Catholic church for conversion into a chapel and parochial classrooms. It was being readied for use as Easter services.

Palouse River Ice Blasted by Engineers

Cofax, Wash.—(U.P.)—Army engineers were blasting ice in the Palouse river below here today in an attempt to remove conditions which could cause a flood.

Col. N. E. Page of Walla Walla, district engineer, said the blasting would continue as long as it helped dislodge the ice which could pile up and cause the river to overflow its banks.

Nebraskans Give Conflicting Testimony About Circumstances of Contribution

Washington—(U.P.)—Nebraska's Francis Case (R-S.D.) touched off a big furor during the natural gas bill debate, said he had been introduced to Wishart several times before that in Nebraska.

Testimony Differs

Wishart said Neff told him the \$2500 came from four, five or six people who wanted to contribute to the Nebraska GOP and that Neff offered to supply their names.

Neff said he never told Wishart any such thing; that Wishart didn't ask the name of the donor and that he (Neff) did not volunteer the information. Neff said today it was part of a \$5000 fund which Elmer Patman, Austin, Tex., attorney for Superior Oil Co. of California,



FLOODED FARMLAND—The series of four pictures above taken by F. E. Ross, 1325 Winchester ave., shows extent of local flooding. The arrow in the upper left indicates a residence which was surrounded by water. The creek channel is marked by short black lines to the bridge. The creek channel is marked by short black lines to the bridge. The arrow in the upper left indicates a residence which was surrounded by water. The creek channel is marked by short black lines to the bridge.

Griffin Creek Floodwaters Scatter Over Countryside



Griffin Creek at Ross lane bridge. The creek channel is marked by short black lines to the bridge. The arrow in the upper left indicates a residence which was surrounded by water. The creek channel is marked by short black lines to the bridge.

WEATHER

FORECAST: Rain in the valley and snow in the mountains tonight. Showers Wednesday. Low tonight 38-40, high Wednesday 42-45.

Highest Yesterday 49
Lowest this Morning 44

MEDFORD

United Press—Full Leased Wire

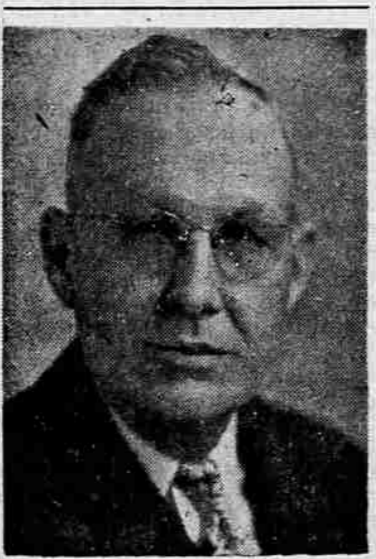
30th Year 20 Pages MEDFORD, OREGON, TUESDAY

RIBUNE

United Press—Full Leased Wire

956 Price 5c No. 291

TRAIN COLLISION KILLS 13



E. H. MANN
Announces Candidacy

Representative To Seek Reelection

State Rep. E. H. (Ed) Mann said today he will be a candidate for reelection.

Mann has been one of Jackson county's two members of the state house of representatives for three two-year terms. He is a Republican. Mr. and Mrs. Mann live at 47 Rose ave. He is head of the E. H. Mann company, which makes truck bodies.

Hearings on School Budgets Scheduled

Public hearings on two county school budgets will be held Saturday, March 3, in the court-house.

A 10 a. m. hearing is scheduled on the \$53,150 operating and emergency budget of the rural school board. At 11 a. m., the \$305,450 non-high school budget for operating, emergency, transportation and tuition will be considered.

Budgets of the second and third class districts must be submitted to the rural school board on or before March 15 to allow for the board to conduct audits from March 15 to April 15, according to County School Superintendent Alf Mekkvoid. Hearings with individual boards and administrators are scheduled between April 10 and 20, he said.

The county-wide election to exceed the 6 per cent limitation in all districts must be held on or before the third Monday in May.

Red Cross Worker Here From San Francisco

Miss Loretto Webb, San Francisco, Red Cross disaster field representative, arrived yesterday for further rehabilitation work in Jackson and Josephine counties.

Headquarters for the work is in Grants Pass, according to the Jackson county Red Cross executive secretary, Mrs. Helen Wilson. Late applications are still arriving from Jackson county residents asking for Red Cross aid for damage suffered in the December flood, she said.

March of Dimes Heads Asked To Submit Reports

March of Dimes chairmen in the various county communities were urged today by Jerry Lausmann, county chairman, to turn in their final reports at the earliest possible date. The reports, along with a check for the community contributions, should be sent to Aubrey Loper, U. S. National Bank, Medford, Lausmann said.

Lausmann also urged businessmen still having March of Dimes coin collectors on their counters to call either Jerry Gastineau, Medford chairman, at 3-5148, or Lausmann at 3-5403 and the cans will be picked up.

Boy Flown Here Suffers From Gun Shot Wounds

Gary Lee Hankins, 10, of Dairy, Ore., was flown here from Klamath Falls today for treatment by a nerve specialist after he was accidentally shot in the back yesterday by a .22 calibre rifle.

Authorities said the young son of Mr. and Mrs. Orrin Hankins was wounded while playing with his 14-year-old brother. The bullet entered his back and emerged on the left side of his chest.

The boy was flown here about noon today by Mercy Flights Inc., and taken to Sacred Heart hospital by Medford Ambulance service.

Woodburn Site OK'd For Air Force Base

Salem—(U.P.)—Earl Snyder, director of the State Board of Aeronautics, said today he had received word that the federal air space coordinating committee had approved a site west of Woodburn for the Air Force's new \$13,000,000 air base.

The approval was just one hurdle in selecting a site for the new base, however. It meant that the air space coordinating committee felt establishment of the base at Fairfield, 15 miles north of here, would not interfere with present air activities.

Preliminary engineering work, including drilling and driving of property stakes has been going on at the 15,000-acre site for several days. Not all of the land is expected to be developed.

The engineering data will be compiled and presented to Congress for final approval and appropriation.

Early-Morning Commuters Crash In Massachusetts

Survivors Injured In Second Collision

Swampscott, Mass.—(U.P.)—A collision of two commuter trains in a snowstorm killed at least 13 persons and injured 60 others today.

More than 1000 work-bound passengers were on the two Boston and Maine Railroad trains. One plowed into the rear of the other which had halted near Swampscott Junction station.

Car Sheared in Half

Most of the dead were in a car which was sheared in half as it plowed beneath the rear car of the stopped train.

Some of the passengers a short time later were involved in a second—similar—collision about five miles away. A train they had boarded on the same line to continue their journey to Boston was hit in the rear by another train. Fourteen persons were hurt in the second accident.

The first collision involved passenger trains bound from Portsmouth, N.H. and Salem, Mass., for Boston.

The second accident was in nearby Revere and involved two trains that had left Marblehead.

All four trains were operated by the Boston and Maine Railroad.

In Both Wrecks

The Swampscott accident was by far the worst. In it, one of the cars was ripped in two. Three others were knocked off the tracks. The cars in the Revere mishap remained on the track and proceeded to Boston where the injured were removed to a hospital.

Austin Davis of Marblehead, an assistant sergeant at arms at the statehouse, was in both wrecks. He suffered a bruised hip and leg in the first accident but was unhurt in the second.

The bodies were taken to the fire station for identification.

One at Standstill

The train from Salem, made up four stainless steel self-propelled Budd cars, smashed into the rear of the nine-car diesel-powered train from Portsmouth.

A witness said the Portsmouth train was at a standstill when it was rammed by the Budd Highlander. The first car of the Budd train virtually skidded under the last car of the Portsmouth train.

Passengers inside the trains scrambled to get out. Some cried hysterically.

The accident occurred at 8:10 a. m. (EST) during a whirling snowstorm that hit much of New England. Visibility was poor.

A passenger on the Portsmouth train, who refused to disclose his name, said all the passengers in his car were tossed off their seats.

Saw Eight Dead

"I looked out and there was half a Budd car alongside my window," he said.

He said the car behind his was high in the air, as if it were rammed from beneath. "One side of the car was standing, the roof and other wall were smashed in."

"I saw eight bodies myself," he said. "Rescuers pulled them out and laid them on the ground. It was difficult to recognize some of them as ever having been human beings."

Portland—(U.P.)—J. H. MacKenzie, 75, owner of hardware companies here and in Bend, died Monday.

Sanitarian, Planners Discuss County Needs

Jackson county's needs for improved sanitation standards and procedures were explained to the county planning commission Monday night by Robert Hart, county sanitarian.

He spoke at the first regular meeting of the recently-formed committee. President John Pletsch was in charge of the meeting.

Hart said subdivisions platted in outlying areas have few requirements now, with the result that health standards are often neglected.

Inadequate Sewers

Builders have installed many inadequate sewer systems, having insufficient drainage and space for septic tanks, he said.

The county's only control over such practices is through refusal to approve such property for GI or FHA loans.

He maintained that such construction goes on throughout the valley on poor soil, resulting in lack of water and efficient sewage control. Griffin Creek was cited as having more homes than the ground water there could supply adequately. Hart said a heavy rain there caused murky water from the wells.

Warning that the situation is "worsening, because most of the better soils have already been used," Hart asked the commission to consider setting standards for subdivisions. County sanitarians now find two or three homes each month which allow effluent to flow into the gutters.

Not Sufficient Space

The county cannot prosecute such cases unless a solution to their problem can be offered,

Cowan Inspecting Flood Damaged Roads

E. H. Cowan, engineer with the U. S. bureau of public roads, Salem, is spending two days in the valley making a survey of last week's flood damage. He is being assisted by County Engineer Paul Rynning and County Civil Defense Director Maj. Gen. Joseph Hicks.

Cowan, who also is available to assist with applications for federal aid, said he understood that flood damage from last week's heavy precipitation was considerably less than that caused in December.

His report will be submitted to the state civil defense agency.

Neuberger Raps Policies by McKay

Washington—(U.P.)—Sen. Richard L. Neuberger (D-Ore.) said today Interior Secretary Douglas McKay's power policies are "sacrificing" the low industrial power rate of the Northwest and doing lasting harm to the region.

Neuberger, in a speech prepared for Senate delivery, said officials of Kaiser Aluminum Co. announced they can buy power from new steam plants in the Ohio valley at four mills a kilowatt hour.

He quoted Kaiser officials as saying they no longer need to erect plants near hydroelectric power sites remote from mass consuming markets.

Neuberger said Bonneville Power's average 2.2 mill industrial rate attracted industry. But he said that the rate is being "sacrificed" to the region's private-utility rate of 8.2 mills.

He said McKay "choked off" new federal starts so the private utilities could pre-empt such choice power sites as Hells Canyon and John Day . . . and now the chickens have come home to roost."

Thornton Reveals Reelection Plans

Salem—(U.P.)—Attorney General Robert Y. Thornton removed himself as a possible Democratic candidate for governor today as the deadline for filing for the state's May 18 primary election neared rapidly.

Thornton announced that he would seek reelection as attorney general. He said he had "decided not to seek higher office at this time." Carl Francis of Dayton is seeking the Republican nod for attorney general.

With deadline for the primary only 10 days away, no candidates had yet been filed for the presidential races. But Adlai Stevenson promised yesterday to give "prompt attention" to an invitation to enter the race. Sen. Estes Kefauver, another Democrat, also has said he hasn't decided. Republicans were believed waiting President Eisenhower's decision on whether to run again.

Deadline for filing is Friday, March 9 at 5 p. m.

Algerian Rebels Warned To Accept Peaceful Settlement

Paris—(U.P.)—Premier Guy Mollet today warned rebel forces in Algeria that unless they agree to peaceful settlement of future problems he will mobilize all the resources of France to crush them.

In a bid for support from the responsible elements among Algerian leaders, Mollet promised that there would be free elections three months after the restoration of peace in the strife-torn North African territory.

"If this appeal is not heeded," he said, "the government will mobilize all its resources to assure peace in Algeria by every means."

Algerian Rebels Warned To Accept Peaceful Settlement

Mollet's plea for moderation and peace was made in a nationwide radio address following a meeting of the National Defense Committee, the French equivalent of the U. S. National Security Council.

The committee met in urgent session to study demands for massive and immediate troop reinforcements for Algeria.

Informed sources said military leaders in North Africa had asked for about 200,000 more men to join the estimated 300,000 already fighting Nationalist rebels in Algeria. The rebellion is being carried out by 15,000 Molesse guerrillas.

Algerian Rebels Warned To Accept Peaceful Settlement

Paris—(U.P.)—Premier Guy Mollet today warned rebel forces in Algeria that unless they agree to peaceful settlement of future problems he will mobilize all the resources of France to crush them.

In a bid for support from the responsible elements among Algerian leaders, Mollet promised that there would be free elections three months after the restoration of peace in the strife-torn North African territory.

"If this appeal is not heeded," he said, "the government will mobilize all its resources to assure peace in Algeria by every means."

Algerian Rebels Warned To Accept Peaceful Settlement

Paris—(U.P.)—Premier Guy Mollet today warned rebel forces in Algeria that unless they agree to peaceful settlement of future problems he will mobilize all the resources of France to crush them.

In a bid for support from the responsible elements among Algerian leaders, Mollet promised that there would be free elections three months after the restoration of peace in the strife-torn North African territory.

"If this appeal is not heeded," he said, "the government will mobilize all its resources to assure peace in Algeria by every means."

Algerian Rebels Warned To Accept Peaceful Settlement

Paris—(U.P.)—Premier Guy Mollet today warned rebel forces in Algeria that unless they agree to peaceful settlement of future problems he will mobilize all the resources of France to crush them.

In a bid for support from the responsible elements among Algerian leaders, Mollet promised that there would be free elections three months after the restoration of peace in the strife-torn North African territory.

"If this appeal is not heeded," he said, "the government will mobilize all its resources to assure peace in Algeria by every means."

Algerian Rebels Warned To Accept Peaceful Settlement

Paris—(U.P.)—Premier Guy Mollet today warned rebel forces in Algeria that unless they agree to peaceful settlement of future problems he will mobilize all the resources of France to crush them.

In a bid for support from the responsible elements among Algerian leaders, Mollet promised that there would be free elections three months after the restoration of peace in the strife-torn North African territory.

"If this appeal is not heeded," he said, "the government will mobilize all its resources to assure peace in Algeria by every means."

Algerian Rebels Warned To Accept Peaceful Settlement

Paris—(U.P.)—Premier Guy Mollet today warned rebel forces in Algeria that unless they agree to peaceful settlement of future problems he will mobilize all the resources of France to crush them.

In a bid for support from the responsible elements among Algerian leaders, Mollet promised that there would be free elections three months after the restoration of peace in the strife-torn North African territory.

"If this appeal is not heeded," he said, "the government will mobilize all its resources to assure peace in Algeria by every means."

Early-Morning Commuters Crash In Massachusetts

Survivors Injured In Second Collision

Swampscott, Mass.—(U.P.)—A collision of two commuter trains in a snowstorm killed at least 13 persons and injured 60 others today.

More than 1000 work-bound passengers were on the two Boston and Maine Railroad trains. One plowed into the rear of the other which had halted near Swampscott Junction station.

Car Sheared in Half

Most of the dead were in a car which was sheared in half as it plowed beneath the rear car of the stopped train.

Some of the passengers a short time later were involved in a second—similar—collision about five miles away. A train they had boarded on the same line to continue their journey to Boston was hit in the rear by another train. Fourteen persons were hurt in the second accident.

The first collision involved passenger trains bound from Portsmouth, N.H. and Salem, Mass., for Boston.

The second accident was in nearby Revere and involved two trains that had left Marblehead.

All four trains were operated by the Boston and Maine Railroad.

In Both Wrecks

The Swampscott accident was by far the worst. In it, one of the cars was ripped in two. Three others were knocked off the tracks. The cars in the Revere mishap remained on the track and proceeded to Boston where the injured were removed to a hospital.

Austin Davis of Marblehead, an assistant sergeant at arms at the statehouse, was in both wrecks. He suffered a bruised hip and leg in the first accident but was unhurt in the second.

The bodies were taken to the fire station for identification.

One at Standstill

The train from Salem, made up four stainless steel self-propelled Budd cars, smashed into the rear of the nine-car diesel-powered train from Portsmouth.

A witness said the Portsmouth train was at a standstill when it was rammed by the Budd Highlander. The first car of the Budd train virtually skidded under the last car of the Portsmouth train.

Passengers inside the trains scrambled to get out. Some cried hysterically.

The accident occurred at 8:10 a. m. (EST) during a whirling snowstorm that hit much of New England. Visibility was poor.

A passenger on the Portsmouth train, who refused to disclose his name, said all the passengers in his car were tossed off their seats.

Saw Eight Dead

"I looked out and there was half a Budd car alongside my window," he said.

He said the car behind his was high in the air, as if it were rammed from beneath. "One side of the car was standing, the roof and other wall were smashed in."

"I saw eight bodies myself," he said. "Rescuers pulled them out and laid them on the ground. It was difficult to recognize some of them as ever having been human beings."

Portland—(U.P.)—J. H. MacKenzie, 75, owner of hardware companies here and in Bend, died Monday.

Sanitarian, Planners Discuss County Needs

Jackson county's needs for improved sanitation standards and procedures were explained to the county planning commission Monday night by Robert Hart, county sanitarian.

He spoke at the first regular meeting of the recently-formed committee. President John Pletsch was in charge of the meeting.

Hart said subdivisions platted in outlying areas have few requirements now, with the result that health standards are often neglected.

Inadequate Sewers

Builders have installed many inadequate sewer systems, having insufficient drainage and space for septic tanks, he said.

The county's only control over such practices is through refusal to approve such property for GI or FHA loans.

He maintained that such construction goes on throughout the valley on poor soil, resulting in lack of water and efficient sewage control. Griffin Creek was cited as having more homes than the ground water there could supply adequately. Hart said a heavy rain there caused murky water from the wells.

Warning that the situation is "worsening, because most of the better soils have already been used," Hart asked the commission to consider setting standards for subdivisions. County sanitarians now find two or three homes each month which allow effluent to flow into the gutters.

Not Sufficient Space

The county cannot prosecute such cases unless a solution to their problem can be offered,

Sanitarian, Planners Discuss County Needs

Jackson county's needs for improved sanitation standards and procedures were explained to the county planning commission Monday night by Robert Hart, county sanitarian.

He spoke at the first regular meeting of the recently-formed committee. President John Pletsch was in charge of the meeting.

Hart said subdivisions platted in outlying areas have few requirements now, with the result that health standards are often neglected.

Inadequate Sewers

Builders have installed many inadequate sewer systems, having insufficient drainage and space for septic tanks, he said.

The county's only control over such practices is through refusal to approve such property for GI or FHA loans.

He maintained that such construction goes on throughout the valley on poor soil, resulting in lack of water and efficient sewage control. Griffin Creek was cited as having more homes than the ground water there could supply adequately. Hart said a heavy rain there caused murky water from the wells.

Warning that the situation is "worsening, because most of the better soils have already been used," Hart asked the commission to consider setting standards for subdivisions. County sanitarians now find two or three homes each month which allow effluent to flow into the gutters.

Not Sufficient Space

The county cannot prosecute such cases unless a solution to their problem can be offered,

Sanitarian, Planners Discuss County Needs

Jackson county's needs for improved sanitation standards and procedures were explained to the county planning commission Monday night by Robert Hart, county sanitarian.

He spoke at the first regular meeting of the recently-formed committee. President John Pletsch was in charge of the meeting.

Hart said subdivisions platted in outlying areas have few requirements now, with the result that health standards are often neglected.

Inadequate Sewers

Builders have installed many inadequate sewer systems, having insufficient drainage and space for septic tanks, he said.

The county's only control over such practices is through refusal to approve such property for GI or FHA loans.

He maintained that such construction goes on throughout the valley on poor soil, resulting in lack of water and efficient sewage control. Griffin Creek was cited as having more homes than the ground water there could supply adequately. Hart said a heavy rain there caused murky water from the wells.

Warning that the situation is "worsening, because most of the better soils have already been used," Hart asked the commission to consider setting standards for subdivisions. County sanitarians now find two or three homes each month which allow effluent to flow into the gutters.

Not Sufficient Space

The county cannot prosecute such cases unless a solution to their problem can be offered,

Sanitarian, Planners Discuss County Needs

Jackson county's needs for improved sanitation standards and procedures were explained to the county planning commission Monday night by Robert Hart, county sanitarian.

He spoke at the first regular meeting of the recently-formed committee. President John Pletsch was in charge of the meeting.

Hart said subdivisions platted in outlying areas have few requirements now, with the result that health standards are often neglected.

Inadequate Sewers

Builders have installed many inadequate sewer systems, having insufficient drainage and space for septic tanks, he said.

The county's only control over such practices is through refusal to approve such property for GI or FHA loans.

He maintained that such construction goes on throughout the valley on poor soil, resulting in lack of water and efficient sewage control. Griffin Creek was cited as having more homes than the ground water there could supply adequately. Hart said a heavy rain there caused murky water from the wells.

Warning that the situation is "worsening, because most of the better soils have already been used," Hart asked the commission to consider setting standards for subdivisions. County sanitarians now find two or three homes each month which allow effluent to flow into the gutters.

Not Sufficient Space

The county cannot prosecute such cases unless a solution to their problem can be offered,

Sanitarian, Planners Discuss County Needs

Jackson county's needs for improved sanitation standards and procedures were explained to the county planning commission Monday night by Robert Hart, county sanitarian.

He spoke at the first regular meeting of the recently-formed committee. President John Pletsch was in charge of the meeting.

Hart said subdivisions platted in outlying areas have few requirements now, with the result that health standards are often neglected.

Inadequate Sewers

Builders have installed many inadequate sewer systems, having insufficient drainage and space for septic tanks, he said.

The county's only control over such practices is through refusal to approve such property for GI or FHA loans.

He maintained that such construction goes on throughout the valley on poor soil, resulting in lack of water and efficient sewage control. Griffin Creek was cited as having more homes than the ground water there could supply adequately. Hart said a heavy rain there caused murky water from the wells.

Warning that the situation is "worsening, because most of the better soils have already been used," Hart asked the commission to consider setting standards for subdivisions. County sanitarians now find two or three homes each month which allow effluent to flow into the gutters.

Not Sufficient Space

The county cannot prosecute such cases unless a solution to their problem can be offered,

Sanitarian, Planners Discuss County Needs

Jackson county's needs for improved sanitation standards and procedures were explained to the county planning commission Monday night by Robert Hart, county sanitarian.

He spoke at the first regular meeting of the recently-formed committee. President John Pletsch was in charge of the meeting.

Hart said subdivisions platted in outlying areas have few requirements now, with the result that health standards are often neglected.

Inadequate Sewers

Builders have installed many inadequate sewer systems, having insufficient drainage and space for septic tanks, he said.

The county's only control over such practices is through refusal to approve such property for GI or FHA loans.

He maintained that such construction goes on throughout the valley on poor soil, resulting in lack of water and efficient sewage control. Griffin Creek was cited as having more homes than the ground water there could supply adequately. Hart said a heavy rain there caused murky water from the wells.

Warning that the situation is "worsening, because most of the better soils have already been used," Hart asked the commission to consider setting standards for subdivisions. County sanitarians now find two or three homes each month which allow effluent to flow into the gutters.

Not Sufficient Space

The county cannot prosecute such cases unless a solution to their problem can be offered,

Sanitarian, Planners Discuss County Needs

Jackson county's needs for improved sanitation standards and procedures were explained to the county planning commission Monday night by Robert Hart, county sanitarian.

He spoke at the first regular meeting of the recently-formed committee. President John Pletsch was in charge of the meeting.

Hart said subdivisions platted in outlying areas have few requirements now, with the result that health standards are often neglected.

Inadequate Sewers

Builders have installed many inadequate sewer systems, having insufficient drainage and space for septic tanks, he said.

The county's only control over such practices is through refusal to approve such property for GI or FHA loans.

He maintained that such construction goes on throughout the valley on poor soil, resulting in lack of water and efficient sewage control. Griffin Creek was cited as having more homes than the ground water there could supply adequately. Hart said a heavy rain there caused murky water from the wells.

Warning that the situation is "worsening, because most of the better soils have already been used," Hart asked the commission to consider setting standards for subdivisions. County sanitarians now find two or three homes each month which allow effluent to flow into the gutters.

Not Sufficient Space

The county cannot prosecute such cases unless a solution to their problem can be offered,

Sanitarian, Planners Discuss County Needs

Jackson county's needs for improved sanitation standards and procedures were explained to the county planning commission Monday night by Robert Hart, county sanitarian.

He spoke at the first regular meeting of the recently-formed committee. President John Pletsch was in charge of the meeting.

Hart said subdivisions platted in outlying areas have few requirements now, with the result that health standards are often neglected.

Inadequate Sewers

Builders have installed many inadequate sewer systems, having insufficient drainage and space for septic tanks, he said.

The county's only control over such practices is through refusal to approve such property for GI or FHA loans.

He maintained that such construction goes on throughout the valley on poor soil, resulting in lack of water and efficient sewage control. Griffin Creek was cited as having more homes than the ground water there could supply adequately. Hart said a heavy rain there caused murky water from the wells.

Warning that the situation is "worsening, because most of the better soils have already been used," Hart asked the commission to consider setting standards for subdivisions. County sanitarians now find two or three homes each month which allow effluent to flow into the gutters.

Not Sufficient Space

The county cannot prosecute such cases unless a solution to their problem can be offered,

Sanitarian, Planners Discuss County Needs

Jackson county's needs for improved sanitation standards and procedures were explained to the county planning commission Monday night by Robert Hart, county sanitarian.

He spoke at the first regular meeting of the recently-formed committee. President John Pletsch was in charge of the meeting.

Hart said subdivisions platted in outlying areas have few requirements now, with the result that health standards are often neglected.

Inadequate Sewers

Builders have installed many inadequate sewer systems, having insufficient drainage and space for septic tanks, he said.

The county's only control over such practices is through refusal to approve such property for GI or FHA loans.

He maintained that such construction goes on throughout the valley on poor soil, resulting in lack of water and efficient sewage control. Griffin Creek was cited as having more homes than the ground water there could supply adequately. Hart said a heavy rain there caused murky water from the wells.

Warning that the situation is "worsening, because most of the better soils have already been used," Hart asked the commission to consider setting standards for subdivisions. County sanitarians now find two or three homes each month which allow effluent to flow into the gutters.

Not Sufficient Space

The county cannot prosecute such cases unless a solution to their problem can be offered,

Sanitarian, Planners Discuss County Needs

Jackson county's needs for improved sanitation standards and procedures were explained to the county planning commission Monday night by Robert Hart, county sanitarian.

He spoke at the first regular meeting of the recently-formed committee. President John Pletsch was in charge of the meeting.

Hart said subdivisions platted in outlying areas have few requirements now, with the result that health standards are often neglected.

Inadequate Sewers

Builders have installed many inadequate sewer systems, having insufficient drainage and space for septic tanks, he said.

The county's only control over such practices is through refusal to approve such property for GI or FHA loans.

He maintained that such construction goes on throughout the valley on poor soil, resulting in lack of water and efficient sewage control. Griffin Creek was cited as having more homes than the ground water there could supply adequately. Hart said a heavy rain there caused murky water from the wells.

Warning that the situation is "worsening, because most of the better soils have already been used," Hart asked the commission to consider setting standards for subdivisions. County sanitarians now find two or three homes each month which allow effluent to flow into the gutters.

Not Sufficient Space

The county cannot prosecute such cases unless a solution to their problem can be offered,

Sanitarian, Planners Discuss County Needs

Jackson county's needs for improved sanitation standards and procedures were explained to the county planning commission Monday night by Robert Hart, county sanitarian.

He spoke at the first regular meeting of the recently-formed committee. President John Pletsch was in charge of the meeting.

Hart said subdivisions platted in outlying areas have few requirements now, with the result that health standards are often neglected.

Inadequate Sewers

Builders have installed many inadequate sewer systems, having insufficient drainage and space for septic tanks, he said.

The county's only control over such practices is through refusal to approve such property for GI or FHA loans.

He maintained that such construction goes on throughout the valley on poor soil, resulting in lack of water and efficient sewage control. Griffin Creek was cited as having more homes than the ground water there could supply adequately. Hart said a heavy rain there caused murky water from the wells.

Warning that the situation is "worsening, because most of the better soils have already been used," Hart asked the commission to consider setting standards for subdivisions. County sanitarians now find two or three homes each month which allow effluent to flow into the gutters.

Not Sufficient Space

The county cannot prosecute such cases unless a solution to their problem can be offered,

Sanitarian, Planners Discuss County Needs

Jackson county's needs for improved sanitation standards and procedures were explained to the county planning commission Monday night by Robert Hart, county sanitarian.

He spoke at the first regular meeting of the recently-formed committee. President John Pletsch was in charge of the meeting.

Hart said subdivisions platted in outlying areas have few requirements now, with the result that health standards are often neglected.

Inadequate Sewers

Builders have installed many inadequate sewer systems, having insufficient drainage and space for septic tanks, he said.

The county's only control over such practices is through refusal to approve such property for GI or FHA loans.

He maintained that such construction goes on throughout the valley on poor soil, resulting in lack of water and efficient sewage control. Griffin Creek was cited as having more homes than the ground water there could supply adequately. Hart said a heavy rain there caused murky water from the wells.

Warning that the situation is "worsening, because most of the better soils have already been used," Hart asked the commission to consider setting standards for subdivisions. County sanitarians now find two or three homes each month which allow effluent to flow into the gutters.

Not Sufficient Space

The county cannot prosecute such cases unless a solution to their problem can be offered,

Sanitarian, Planners Discuss County Needs

Jackson county's needs for improved sanitation standards and procedures were explained to the county planning commission Monday night by Robert Hart, county sanitarian.

He spoke at the first regular meeting of the recently-formed committee. President John Pletsch was in charge of the meeting.

Hart said subdivisions platted in outlying areas have few requirements now, with the result that health standards are often neglected.

Inadequate Sewers

Builders have installed many inadequate sewer systems, having insufficient drainage and space for septic tanks, he said.

The county's only control over such practices is through refusal to approve such property for GI or FHA loans.

He maintained that such construction goes on throughout the valley on poor soil, resulting in lack of water and efficient sewage control. Griffin Creek was cited as having more homes than the ground water there could supply adequately. Hart said a heavy rain there caused murky water from the wells.

Warning that the situation is "worsening, because most of the better soils have already been used," Hart asked the commission to consider setting standards for subdivisions. County sanitarians now find two or three homes each month which allow effluent to flow into the gutters.

Not Sufficient Space

The county cannot prosecute such cases unless a solution to their problem can be offered,

Sanitarian, Planners Discuss County Needs

Jackson county's needs for improved sanitation standards and procedures were explained to the county planning commission Monday night by Robert Hart, county sanitarian.

He spoke at the first regular meeting of the recently-formed committee. President John Pletsch was in charge of the meeting.

Hart said subdivisions platted in outlying areas have few requirements now, with the result that health standards are often neglected.

Inadequate Sewers

Builders have installed many inadequate sewer systems, having insufficient drainage and space for septic tanks, he said.

The county's only control over such practices is through refusal to approve such property for GI or FHA loans.

He maintained that such construction goes on throughout the valley on poor soil, resulting in lack of water and efficient sewage control. Griffin Creek was cited as