

US Declared Being Prepared for Shock Of Russian Missile

Washington — (U.P.) — Sen. Henry M. Jackson (D-Wash.) claims Air Secretary Donald M. Quarles is trying to "minimize" the importance of the intermediate ballistic missile to cushion the shock when Russia gets one. Jackson, a critic of the administration's handling of the missile program, contends that Russia is ahead of the United States in developing an intermediate missile. Therefore, he said, Quarles wants to prepare "the American people for the worst."

To Hold Investigation

Jackon will head a newly opened Senate investigation into the guided missile and jet bomber programs.

The Washington senator also said he urged President Eisenhower without success last June

to appoint a special presidential assistant to head the missile development program. He said the proposal was one of the four he sent to the White House following an airpower investigation. He said the other three recommendations were carried out.

Refuses Controversy
Jackson refused to be drawn into a controversy with Mr. Eisenhower who told a recent news conference the United States is moving ahead with the missile program as fast as scientific manpower will permit.

But he said the chief executive never had denied Jackson's forecast that Russia will test a 1500-mile intermediate missile this year. He said Soviet possession of such a weapon would expose this country's allies to "ballistics blackmail."



KATHLEEN M. BASH
Files for Convention Delegates

Kathleen M. Bash Seeks Election to Delegate Position

Kathleen M. Bash, chairman of the Jackson County Republican Central committee, today filed to seek election as a delegate from the fourth congressional district to the party's national convention in San Francisco next August.

Mrs. Bash, active in party affairs in Oregon for a number of years, was elected chairman of the county Republican organization in February 1954 and re-elected to a two-year term in June of the same year. She is also an executive member of the State Republican Central committee.

In announcing her intention to run for one of the two convention posts in the fourth district, Mrs. Bash said: "I think it is necessary for the average citizen to become interested in politics if we are to continue to have good government. Only the man or woman who works politically can fully realize how much influence the individual citizen can have in shaping the way in which our nation is run."

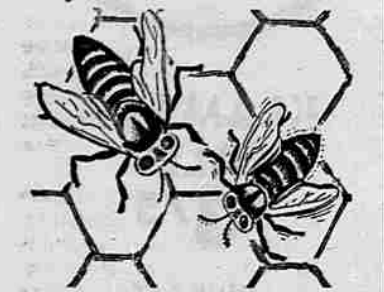
Mrs. Bash graduated from Roseburg High school and attended Oregon State college. She has been a resident of Medford since 1932 and active in many community organizations including the League of Women Voters, and such youth groups as the Boy Scouts and Girl Scouts.

Is That So?

By EUGENE BURNS
Ranger-Naturalist

During the coming spring months, billions and billions of honeybees will be transported thousands of miles throughout Canada and the U. S. in style by special truck, railway and airplane.

For honey? Not on your life. Although once honeybees were thought of as producers of sweets, today in most regions honey and wax have become



rather unimportant, secondary by-products.

Due to the widespread use of poisonous insect sprays which have killed many of the natural pollinators—such as wild bees, wasps, moths, and flies—the imported honeybee is now playing a vastly more important role: fertilizing blooms of fruits, many vegetables, and the all-important legumes such as alfalfa and clover which replace nitrogen in the soil. Demonstrably, these transported pollinators can quadruple crops!

However as recently as 1930, their role was still misunderstood. In that year, the Utah legislature prohibited the introduction of honeybees. For Utah's legume crops it was hari-kari; within the year, the state's alfalfa-seed production dropped 75 per cent. In the three following years, it declined still further. Then, when the ill-advised embargo was lifted in 1934, and thousands of bee colonies were hastily moved into the state, alfalfa-seed production soared once again!

In one controlled experiment in California, where alfalfa formerly yielded an average of 220 pounds per acre—which was considered high—a super-saturation of bees boosted the yield to 1,000 pounds! As a result, where farmers formerly extracted a fee from the migrant bee-keeper to day they are only too glad to pay him!

Miraculous Acts

In performing their duties, the honeybees perform many miraculous acts but none, surely, surpasses its method of communication within the hive. Should a lone bee find a new type of fragrant, nectar-laden flower, it passes the word along and suddenly the hive is changed; at once, tens of thousands converge accurately upon the new source of supply whether it is 100 yards away or over beyond a hill, a mile away. How is it done?

Essentially one man solved the riddle—Karl von Frische of the University of Munich whom I met when I studied there. First,

Professor von Frische determined the color-vision of bees and found that they could see only in the shorter wave lengths—in the yellows, blue-greens, blues and ultraviolet (about 1/15th of the human eye-range) and they could not see the longer infra-red rays at the opposite end of the human spectrum, say the glowing reds of our sunset. (For that matter, humans cannot see in the bee's ultra-violet range either.) This color recognition, then might explain how bees could recognize the flower at a short distance once they found it.

Next, the professor found that honeybees have an acute sense of smell: a bee returning from a new blossom carried back with it the perfume of the flower and it was recognized at once by the other bees in the hive and it stimulated them to seek nectar from this particular flower. Good, but where? Without language, how could one bee pinpoint to another the exact location of its find?

Like others before him, von Frische noticed that bees returning to the hive with a plentiful supply of new honey performed a very distinctive dance on the honeycomb. (This was first described by M. J. E. Spitzner in 1788 but its significance escaped him.)

With painstaking experiments, von Frische proved that these "nectar dances" were part of an intelligible language—an attribute totally unsuspected in these lower orders of animals.

The "nectar dance" consisted first of gyrations in circles—dancing first one way and then another. Apparently, to get attention. Next, the dance followed a more complicated routine—dancing in a semi-circle, making a short run, then turning to dance the remainder of the circle, with abdomens wagging.

Indicate Nectar Source
Translated into intelligible language, von Frische found that the circling dances indicated the nectar source within 50 to 100 yards of the hive. Then, for greater distances, the bees did the wagging dance which told both the direction of the find in relation to the sun and the length of the flight. As distances increased, tails wagged more slowly; and to indicate direction, straight runs were made in the dance—and always in relation to the angle of the sun's light.

Thus, other bees watching the performance could approximate both distance from the hive and the direction in relation to the sun's angle. With practice, von Frische himself found that he could locate the bee's new source of nectar! And in getting that nectar, the bee performed its most valuable act: cross-pollinating the plant!

(Copyright, 1956, by Eugene Burns—Released by McClure Newspaper Syndicate)

Portland Gas Firm Speeds Repair Work

Portland—(U.P.)—Customers of Portland Gas and Coke company received welcome news from company spokesmen yesterday with the announcement that service restoration to all areas hit by the gas outage would be completed within a week. Earlier estimates had set the date for completion of the job as possibly two weeks distant.

Nearly 600 servicemen were working on the tremendous job of shutting off each meter on the 61,000 affected by the shut-off. They expected to start reconnection of many of the services in the residential east side section of Portland this morning. Customers in the Linnton district, some 300 to 400 families, had service restored yesterday evening.

Four of the six generators damaged in the Friday night fire at the company's Linnton plant were ready for operation yesterday and spokesmen said they expected to have the other two ready by the time full output was required.

Negro Sees Choice as Democracy in Action

New Orleans — (U.P.) — Hulan E. Jack, Negro president of New York's Borough of Manhattan told an interracial conference here Sunday that his election to the highest office ever held by a member of his race in this country was an example of "democracy in action."

Jack, who administers the governmental affairs of nearly two million inhabitants of the borough, addressed a non-segregated audience in the Loyola University auditorium as part of the eighth annual Catholic Interracial conference here.

The West Indies-born Democrat said 83 per cent of the votes cast for him in 1953 were from members of other races and creeds, including "the votes of thousands of Southerners who had made Manhattan their permanent home."

If You're Not Trading at The Groceteria You're Paying Too Much!

GROCETERIA

Sixth and Grape Streets
Open 7 Days a Week
Week Until 9 p.m.



DURING MARCH DOLLAR DAYS

PRICES IN EFFECT ALL THIS WEEK THROUGH
SUNDAY, MARCH 4th

LEAN GROUND BEEF

MADE FRESH DAILY IN OUR OWN SHOP

29¢ lb. — 4 pounds for \$1.00



- Nalley's Corned Beef Hash.....15 oz can (Reg. 31c) 23c, 5 for \$1.00
- Cal Top Apricots 2 1/2 can (Reg. 27c) 23c, 5 for \$1.00
- Del Monte Fruit Cocktail 303 can 25c, 5 for \$1.00
- Diamond A Whole Kernel Corn..... 303 can 18c, 6 for \$1.00
- Cresswell Green Beans 303 can, 2 for 29c, 8 for \$1.00
- Diamond A Sliced Beans 303 can 23c, 5 for \$1.00
- Chiffon Dinner Napkins Pkg. of 70 29c, 4 for \$1.00
- Chiffon Colored Bathroom Tissue .. (2 roll pack) 29c, 4 for \$1.00
- Underwood Deviled Ham, 1/4's 2 for 35c, 6 for \$1.00
- Flavor Zest Peaches 2 1/2 can 23c, 5 for \$1.00
- Swanson Boned Turkey 5 oz. can 35c, 3 for \$1.00
- Swift's Beef Stew 16 oz. can 37c, 3 for \$1.00
- Swift's Chopped Beef 12 oz. can 37c, 3 for \$1.00
- Swift's Prem Lunch Meat 12 oz. can 39c, 3 for \$1.00
- Sunshine Krispy Crackers 2 lb. caddy 53c, 2 for \$1.00
- Del Monte Pineapple Sliced or Crushed No. 1 flat can, 2 for 33c, 7 for \$1.00
- Del Monte Tomato Sauce 3 cans 25c, 13 for \$1.00
- Del Rogue Freestone Peaches 2 1/2 can 37c, 3 for \$1.00
- Del Rogue Tomato Juice 46 oz. can 27c, 4 for \$1.00
- Please Dog Food No. 1 can, 3 cans 29c, 13 for \$1.00
- Pard Dog Food No. 1 can 15c, 8 for \$1.00
- Mission Brand Sugar Peas 303 can, 2 for 29c, 8 for \$1.00
- Snow's Clam Chowder No. 1 can 29c, 4 for \$1.00
- Snow's Minced Clams No. 1/2 can 27c, 4 for \$1.00
- Argo Canned Figs No. 303 can, 2 for 35c, 6 for \$1.00
- North Coast Apple Sauce 303 can, 2 for 33c, 7 for \$1.00
- Groceteria Frozen Meat Pies ea. 29c, 4 for \$1.00
- Shelter Cove Frozen Filet of Sole..... lb. pkg. 55c, 2 for \$1.00
- Bellana Frozen Dressed Smelt 1 lb. pkg. 39c, 3 for \$1.00
- Del Monte Prune Juice quart bottle 37c, 3 for \$1.00
- Standby Apple Juice quart bottle 29c, 4 for \$1.00
- Kraft Sliced Cheese 8 oz. pkg. 35c, 3 for \$1.00

Assort as you wish—Old English, American, Pimento, Swiss

For better tasting toast



Make it with Holsum

Fluhrer's



Daily's U-Drive
Medford Airport



3-lb. Can 69¢
6-lb. Can \$1.37

We Reserve
the Right
To Limit
Quantities



Nestle's
EVAPORATED
Milk
Better for
Coffee and
Cooking, too!

2 Cans
23¢