

One Of Slowest Moves Toward Racial Integration Apparent In Churches

Al Kuettner Sees Color Barrier in Many Places Solid

By AL KUETTNER
United Press Correspondent

Atlanta — (U.P.) — One of the slowest moves of all toward racial integration is apparent in the Protestant churches of the South.

Even in states where communities are falling in line with court orders to desegregate schools, the color barrier still is up solidly in many churches.

A number of large Protestant church bodies have expressed opposition to the principle of segregation. So has the National Council of Churches, which issues a new call on member churches this Sunday to open their membership rolls to persons of all races and color.

No Effect

The appeals have had almost no effect on individual Protestant churches in the South, although Negroes are being accepted now at certain church conferences and conventions.

The general conference of the Methodist church will vote in April whether to appoint a committee "to study the relationship of the races with full consideration to the elimination of segregation within the church."

The Catholic and Unitarian churches have taken the longest steps toward integration.

Negroes are welcomed at all Catholic masses, although integrated parish membership still is rated in Dixie. Parochial schools have none of the segregation restrictions that Southern states impose on public schools.

No Incidents

Unitarian churches in Atlanta, Charleston and Richmond have taken in several Negro members without incident.

One of the main factors in continued church segregation, even in sections outside the South, appears to be the reluctance of Negroes to join non-Negro churches.

Several white Presbyterian churches in Arkansas and Methodist churches in Kentucky voted to lift color bars but only one Negro was reported interested in membership.

Of the 660 non-Catholic churches in metropolitan Kansas City, Mo., only two—both basically Negro—have integration. In West Virginia, school integration was described as "far ahead" of that in churches, although a few Negroes were being invited to join white churches in that state.

The National Council of

High School Students Slate Discussion of Employee Problems

About 175 junior and senior students from seven county high schools are expected to convene in Medford Monday, Feb. 6, to hear business men discuss traits they desire in business employees.

The "Career Day" activities for business and commercial students will be held from 9:30 a.m. to 2 p.m. at the First Meth-

odist church, 607 West Main st. Students from Ashland, Prospect, Eagle Point, Jacksonville, Phoenix, Butte Falls, and Rogue River high school commercial classes will attend the meeting in an attempt to answer the question of what businessmen expect of high school graduate employees.

About 50 businessmen will take part in panel discussions of stenography, typing, bookkeeping, general business and business machines. Each panel will be held three times during the day to give all students an opportunity to attend.

Businessmen serving on the panels will be selected from all types of local industry. Outside the South, integration of churches, where it exists, has not been accomplished without incident.

In Chicago, Rev. Philip Johnson of Salem Lutheran had a 24-hour police guard for several months when his church was integrated along with the movement of Negroes into a previously all-white neighborhood.

Strong Objection
On Chicago's south side, Rev. Jerry Walker is pastor of the city's only really integrated Methodist church, St. James Methodist. The color bar was lifted in 1953 over strong objections of the membership.

"We had to either sell out to the new neighbors or take them in," Johnson said. "We chose to take them in."

In New York City, most denominations now favor integration. There are few Negro pastors but a number of churches have Negro assistants. The children of one suburban church were credited with bringing about integration. It started among youngsters and their elders finally went along.

In Washington, D. C., Dr. Frederick E. Weissig, executive secretary of the Washington Federation of Churches, said that probably 75 per cent of the churches there would accept Negroes into full membership. A number of large churches in the nation's capital have embarked on a quiet campaign of building up interracial congregations and have a substantial number of Negro worshippers every week. They include National Presbyterian, President Eisenhower's church.

There are five times more men alcoholics than women alcoholics.

Special Skills
The panels will attempt to answer questions about what is required of employees in the different types of jobs and in different industries. Special skills required of employees will be considered, such as the speed of stenographers, special education required, and efficiency.

Personality and work traits will be considered. An attempt will be made to determine how much emphasis employers actually place on neatness, loyalty, courtesy, initiative, promptness, and what the employer's attitude is toward office manners, rest periods, and smoking on the job.

What employers expect to pay in salary and how much value they place on accuracy will be considered, as well as opportunities for positions.

The different panels will deal with the particular problems of that phase of employment.

Organizations who are participating in career day, other than the class room teachers, are the First Methodist church, which has donated building space; Services Unlimited employment agency, Southern Oregon college, the Jackson County Chamber of Commerce, and the National Office Management association.

The Mexican jumping bean jumps because the paper-thin shell holds the grub of a gray moth. The larva has 16 legs, some of which have small hooks. With these the insect catches a firm hold and, raising its body, delivers a hard blow with its head, causing the bean to move.

Plead Innocent To Courthouse Holdup

Albany, Ore. — (U.P.) — Harvey Roberts and Ernest Gibson have pleaded innocent in Circuit Court here to charges of assault and robbery in connection with the holdup last month of the Linn county courthouse in which \$8001 was taken.

A trial date will be set next week. In the robbery, Linn County Treasurer Raymond Tomlinson was slugged.

Earthquake Turns Out To Be Gas Cylinders

Miami — (U.P.) — Police calmed anxious North Miami residents who telephoned reports of an "earthquake" Wednesday.

The "deep rumblings" they heard, police said, were caused by heavy gas cylinders rolling down the street after they were spilled from a truck involved in a collision.

There are five times more men alcoholics than women alcoholics.

SWEETENER

—Dee Hill provides the sweetener for all that grapefruit as she calls attention to the 54th annual Citrus Fair at Cloverdale, Cal., Feb. 16-19, which ushers in 1956 celebrations of the Redwood Empire. Cloverdale is noted for oranges, lemons and grapefruits.



Grange

Roxy Ann Grange held its regular meeting Friday, Jan. 20, with a good attendance. Master and Mrs. Kamping, Mr. and Mrs. Densmore and Mrs. Merriman from Gold Hill and Mr. and Mrs. Taylor from Central Point were guests for the evening.

It was with regret that deaths were voted to Mr. and Mrs. C. C. Hoover. They have been members for many years and recently moved from our district.

The program at the lecturer's hour consisted of a debate by Charlie Hoover and Glen Rader on the pros and cons of the state sales tax.

Ice cream and birthday cakes were served during the refreshment hour.

Next regular meeting will be Friday, Feb. 3, at 8:30 p.m. at which time the Southern Oregon Optical society will show a film. Serving committee will be the Harold Ellises, the Paul Daltons and the Grebs.

Everybody's changing to faster foolproof

RED STAR YEAST

Big Fresh Cake AND Special Active Dry

Delivered FRESH by BORDEN

Pacific Cheese Division

• Low in Cost!
• Quick in results!
Use Tribune Want Ads

LUMAN'S

Spare Riblets

Beef Roast

Bacon

GROUND Beef

Butter

WHITE KING SOAP

Coffee

CHEESE

Cabbage

Tomatoes

10^c

- Carrots, Party Time, 303 can
- New Spuds, Hunt's, 303 can
- Sardines, Beach Cliff
- Tomato Soup, Campbell's
- Hominy, Van Camp's, 303 can
- Royal Puddings, all flavors
- Jello Puddings, all flavors
- Chocolate Syrup, Johnston's
- Tomato Paste, Hunt's
- Aluminum Foil
- Pork and Beans, Libby's, 8-oz. can
- Salt, Royal Club, 26 ozs.
- Green Beans, Hunt's
- Pineapple Juice, Libby's, 211 can
- Dog Food, Bonnie
- Book Matches
- Wax Paper, Diamond, Soft
- Sponges, O-Cel-O
- Rice, Patna, 10c lb.

\$1.40

29^c

\$1.00

\$1.00

69^c

53^c

89^c

49^c

7^c

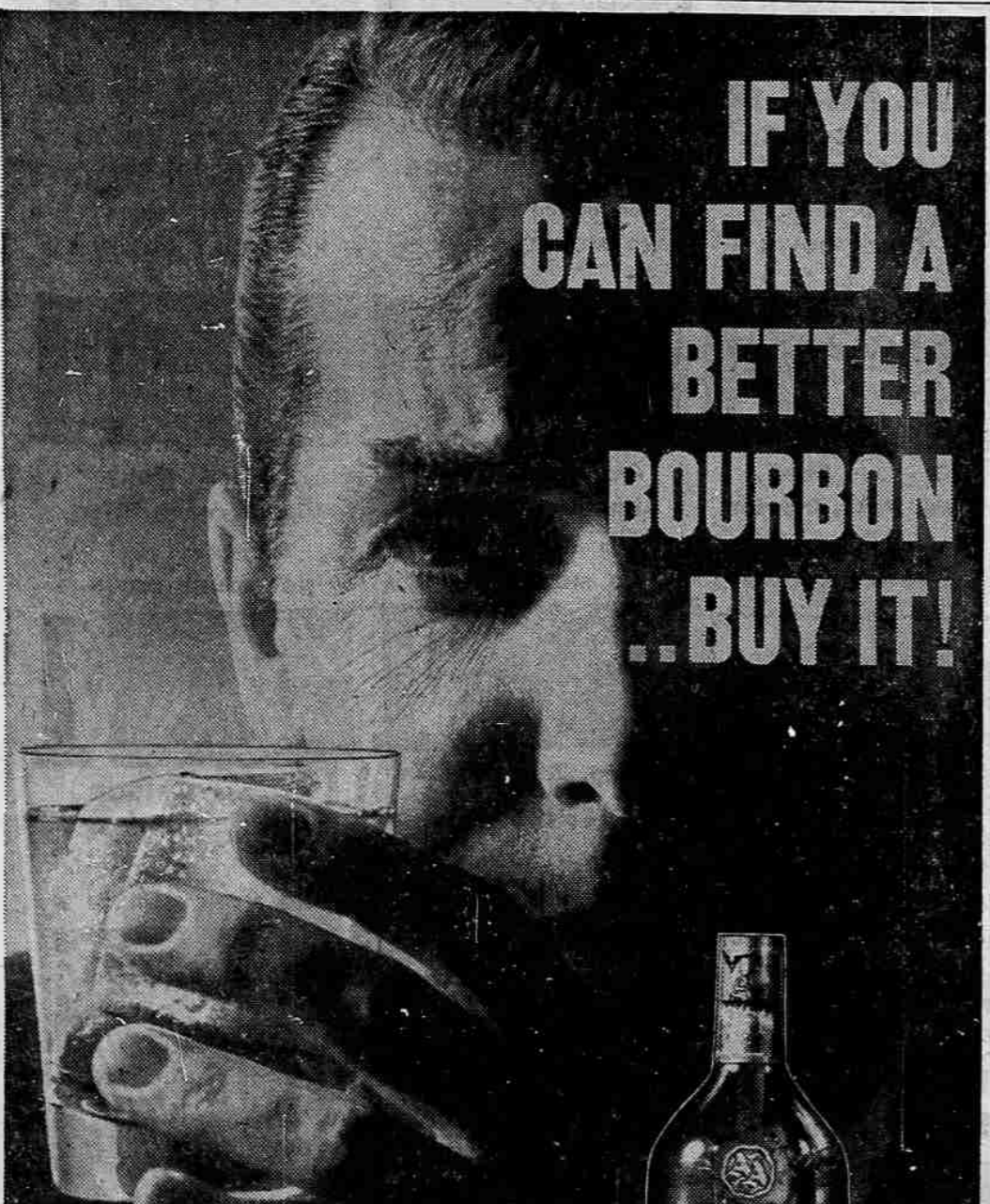
25^c

Store Hours—8 a.m. to 7 p.m.
Saturday—8 a.m. to 8 p.m.
Sunday—9 a.m. to 7 p.m.

LUMAN'S

Independently Owned . . . Independently Operated

4th & Front



IF YOU
CAN FIND A
BETTER
BOURBON
..BUY IT!

Ancient Age

Out of Kentucky, the great bourbon country, comes the greatest of them all, mellow, warmhearted, aged to perfection six full years... Ancient Age. We challenge you to find a better bourbon.

