

(Distributed by King Feature Syndicate, Inc.)

Kiss me, though you make believe, Kiss me though I almost know You are kissing to deceive...

Is there really such a thing as kiss-proof lipstick? Or is it still unavoidable to have kissing handicapped by cosmetics?

Salk Vaccine Use Urged for First Shots

Portland (U.P.)—The State Board of Health yesterday recommended that supplies Salk anti-polio vaccine be used chiefly for the first and second shots during the next few weeks.

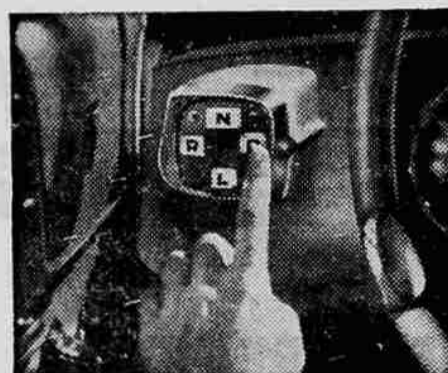
Four Lane County Men Seek Election

Salem (U.P.)—Four members of the Lane county delegation yesterday filed for reelection to the Oregon House of Representatives on the Republican ticket.

Court Records

DISTRICT COURT Eugene C. Whately, violation of basic rule, \$10. John W. Mathes, violation of basic rule, \$12.50.

WHY THE CHRYSLER WINDSOR V-8



Everything about driving a Chrysler is new! You touch a button on the left (and safe!) side...



From four lengths behind to four lengths ahead of a moving truck going 40 m.p.h. in 8 seconds flat.

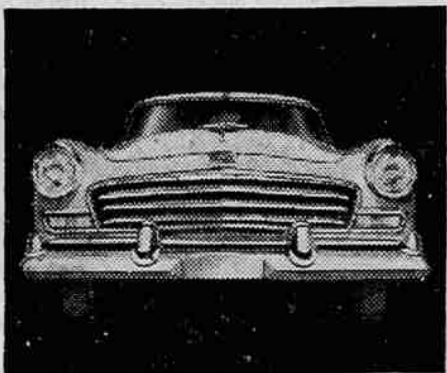


Full-time PowerPilot Steering does 80% of the work... gives you a cat-footed feel of the road every inch of the way.

IS THE YEAR-AHEAD CAR



And talk about style! Here's the "PowerStyle" look that is showing its sassy tail to contemporary car designs.



Best of all, you can own a bigger, more powerful Chrysler Windsor for the cost of a medium-priced car.

"PowerStyle" CHRYSLER

Biggest buy in the fine car field!

Our "Sign of Quality" Used Cars—which include many late model Chryslers—are the greatest buys in town!

HAMLIN MOTOR COMPANY 121 North Bartlett St. Phone 2-6286

ENTER THE \$150,000 LUCKY MOTOR NUMBER SWEEPSTAKES AT YOUR CHRYSLER-PLYMOUTH DEALER'S

STAR GAZER By CLAY R. POLLAN Your Daily Activity Guide According to the Stars To develop message for Wednesday, read words corresponding to numbers of your Zodiac birth sign.

Laughs of the Day...

Memphis, Tenn.—(U.P.)—Richard Rich, manager of a parking lot, complained in court that three men not only tried to charge him for parking on his own lot but tried to overcharge him.

Grand Rapids, Mich.—(U.P.)—Patrolman Adrian Hoogerheide said the person who reported a "bad hole" in an alley on the city's north side wasn't exaggerating one bit.

Elizabeth, N. J.—(U.P.)—Pennsylvania railroad officials explained why a group of North Elizabeth commuters were 10 minutes late for their New York jobs the other day—the engineer thought it was Friday.

Exning, England.—(U.P.)—The 3,800 inhabitants of this little village were awakened abruptly Sunday by the persistent honking of an automobile horn.

East Chicago, Ind.—(U.P.)—Two motorists waiting on opposite sides of the tracks for a slow freight got impatient at the same time Monday.

Around Hollywood

Hollywood—(U.P.)—Esther Williams has tossed away her swimsuit and ear plugs to be a dramatic actress because, she said today, dry emotion is "much safer."

Disabled American Veterans announced yesterday that they have obtained a site to operate a rehabilitation center. Plans call for the center to operate as Allied Rehabilitation Inc., a non-profit organization.

see us for TOP QUALITY HARDWARE HOUSEWARES SPORTING GOODS

NEW KIND OF LAMP BULB GE Deluxe-White All over bright! Clean-white beauty! Costs softer shadows!

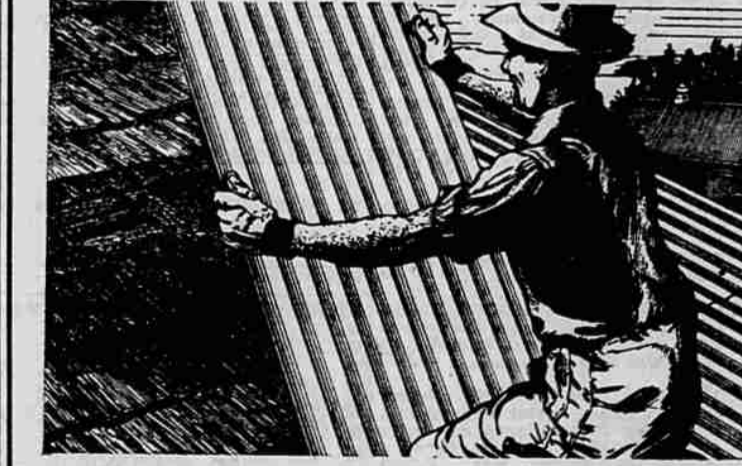
SPECIAL! SALAD Condiment Sets Varnished wall rack fitted with two compartment oil and vinegar bottle, salt shaker, pepper shaker, china funnel and china handled salad spoon and fork.

SPECIAL! SALAD MIXING SET WALL RACK SPECIAL Fitted with two carefully finished 10" spoons and one 10" fork. They are made to be used and are attractive, too.

AUTOMATIC CAN OPENER New model Swing Away, pink and copper and white and copper automatic can opener with magnetic lid holder. \$5.95

BRASS WALL PLAQUES New lot English polished brass plaques 12" to 15" sizes. \$2.90 to \$3.95

"Every-Whick-Way" NYLON MOP with amazing "MAGIC-ACTION" swivel socket It's here—a new dust mop that takes the work out of dusting. Pad is 100% VIRGIN NYLON that washes easily like your nylon stockings.



Corrugated Sheet Metal Roofing CHOOSE EITHER GALVANIZED STEEL OR EMBOSSED ALUMINUM 27 1/2" Galvanized 28 Gauge x 8-Ft. Long \$1.99 27 1/2" Galvanized 28 Gauge x 10-Ft. Long 2.49

TOW CHAINS You can have greater peace of mind if you have a good tow chain in your car. 14-Foot Lock Link Copper Steel Tow Chains, complete in fabric storage bag \$2.49

Answer to a Fisherman's Prayer It's got everything a fisherman could ask for—this new 1956 Evinrude FLEETWIN. It's got power—a man-sized 7 1/2 h.p. that planes your boat! It's got performance—the kind that gets you first to where the fishings best!

HUBBARD BROS., INC. LIGHTWIN, 3.0 H.P. \$152.00 FISHERMAN, 5.5 H.P. (With Cruis a Day Tank) \$224.00 FLEETWIN, 7.5 H.P. (With Cruis a Day Tank) \$249.00