

# Is That So?

Did you know that . . . a giant toad has been found in the Colorado river basin, a native to both Arizona and California, which is nearly a foot long and can squirt a deadly poison from glands on the back of its head.

Hybrid bees may produce up to 30 per cent more honey than their parents and increase their egg-laying up to 35 per cent.

The average pulse rate of rhesus monkeys is 188—ranging from 90 to 288 a minute. (The normal human rate is 70-72 for males; 78-82 for females.)

Minks are gluttons. In the wild, they consume about one-third of their weight in meat daily.

The 15-foot hammer-head shark gives birth to live young—a specimen has been taken with 37 well-developed embryos.

Skin can be taken from a recently dead body and stored for

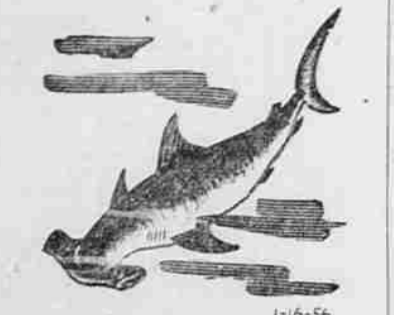
By EUGENE BURNS  
Ranger-Naturalist

Bering Sea. Adult musk oxen stand about 3½ feet at the shoulder and are about six feet long. In appearance they seem related to both the bison and sheep. In winter their long shaggy coat protects them. And well that it does for they inhabit some of the world's most wind-swept wastes in North America and Greenland.

Chile, Canada, and Japan are profitably tapping rich coal deposits miles out to sea.

Last summer a pair of cranes in the Milwaukee zoo produced their first offspring in 23 years. It takes about four pounds of feed to make one pound of turkey. But worth it!

(Copyright, 1956, by Eugene Burns)  
(Released by McClure Newspaper Syndicate)



1-15-56  
three weeks or more in skin banks to be used for grafting on severely burned persons. Such skin does not "take" permanently. It lasts from 10 to 30 days until the patient is well enough to have raw areas of his body covered with his own skin.

The hummingbird takes 10 days to hatch its eggs; the smallest finches, 11; and the canary, 14.

A pair of mourning doves may produce as many as six broods during the hot spring and summer months of our southwestern deserts.

Minute lateral hairs on the shafts of the male mosquito's antennae vibrate to the note produced by the movement of the female's wings in flight. Because the vibration is strongest when the soundwaves strike at right angles, the male can locate, very exactly, the whereabouts of the female.

**Food From Ocean**  
Oceans, almost virgin territory to scientific investigations, may eventually provide most of the world's food and energy.

The orange contains more than 150 different chemical constituents.

Mildew, a fungus growth, is insoluble and cannot always be removed from fabrics.

Tears consist of a complex solution with a surprisingly high protein content. Tears shed in pain, sorrow, or anger differ from those prompted by peeling an onion or those caused by smog and other irritants.

A small herd of musk oxen—remnants of an unsuccessful experiment to introduce them into Alaska from Greenland—live on Nunivak Island in the

**General Motors Plans Record Outlay in 1956**  
New York—(U.P.)—Harlow H. Curdick, president of General Motors Corp., said yesterday the world's biggest business will back its confidence in national prosperity with an all-time record outlay of \$1,000,000,000 in 1956.

Curdick, in his annual business forecast, predicted prosperity will continue throughout 1956 and another record year for U.S. business with full employment.

# Soviet Ready To Offer Latin American Aid

Moscow—(U.P.)—Soviet Premier Nikolai Bulganin said yesterday the Soviet Union is ready to extend technical aid to Latin American countries if such aid is needed.

Bulganin also said Russia is prepared to establish diplomatic relations with all Latin American countries with which it now has no such relations.

Bulganin stated these views in reply to questions submitted by the editor of the Latin American magazine Vision.

Bulganin said the Soviet Union will not interfere in the internal affairs of any other country and expects other countries not to interfere in affairs of the Soviet Union.

The Premier offered technical aid and the use of specialists to Latin American countries if they are interested.

# O'Keefe Pleads Guilty In Brinks Robbery

Boston—(U.P.)—Joseph Specs O'Keefe, pint-sized hoodlum who "spilled all" about the \$1,219,000 Brinks holdup, pleaded guilty to armed robbery at a surprise arraignment yesterday.

O'Keefe who turned informer and implicated 10 others in the fabulous robbery Jan. 17, 1930, was ordered held without bail for sentencing.

No date was set for the sentencing by Superior Judge Daniel D. O'Brien.

The arraignment came as police expected two other Brinks suspects still at large, to surrender "momentarily."

O'Keefe's guilty plea indicated he would be the government's star witness in its prosecution of the remaining nine members of the gang.

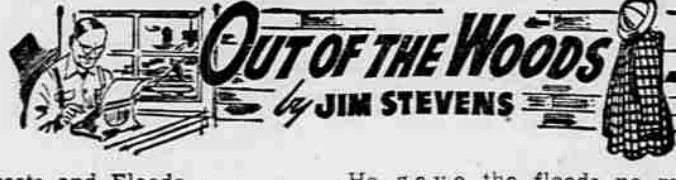
# Knowland, Ike To Be In Illinois Primary

Springfield, Ill.—(U.P.)—The Illinois primary filing period opened yesterday with an announcement that the name of Sen. William F. Knowland of California will be placed on the Republican ballot along with that of President Eisenhower.

Gov. William G. Stratton had already announced he was filing the President's name in the preferential primary today. But the announcement by a Chicago woman that Knowland's name would be filed came as a surprise.

Mrs. Marion R. Cleveland, a Chicago widow, said the 3000 to 5000 signatures necessary to run a name in the Illinois presidential preference primary would be filed for Knowland "before the end of the week."

The average American will consume 160 pounds of meat in 1956, highest in two generations, and total meat production is expected to be the highest on record.



**Forests and Floods . . .**  
The Rev. Samuel Parker, Far West traveler of the early 1830s, made a good many references to high water and floods in his famous book of the time, "Journal of an Exploring Tour Beyond the Rocky Mountains."

Parker's start was on an Ohio river steamboat, which rode water so high that it submerged the 22-foot falls at Louisville. So the steamboat did not need to use the new canal around the falls but kept steaming down the great, swollen, muddy river.

A year later, on the 14th of June, 1836, the Congregational missionary "took a water excursion in the steamboat Beaver, Capt. Home, down the Columbia (from Fort Vancouver) to the confluence of the western branch of the Multnomah; up this river into the Willamette and then (around) into the middle branch of the Multnomah, and through it into the Columbia, and back to the fort."

Parson Parker's narrative went on: "All the lowlands were overflowed with the annual freshet, and presented the appearance of an immense bay, extending far into the country. The day was pleasant and our company cheerful."

**Flood Facts . . .**  
The past year has brought death, destruction and terror to millions of Americans in regions where rivers periodically overflow and present a common "appearance of an immense bay, extending far into the country."

There will be many pictures of the kind in the newspapers this coming spring, and on television and the newsreels. So it was in the old days. The Rev. Parker, a noted Bible scholar of his time, could have cited 45 texts on floods.

In our own time a nature-faking superstition has taken deep root. In a nutshell—and that's where it comes from—the superstition declares that floods are effects of harvesting of old-growth timber.

**Nutshell Notions . . .**  
If the thinking of Sam Parker had been of the species that sees government controls as the answer to every resource management problem, he would most likely have started a campaign to enact laws to cut and burn all forests in short order.

Why not? Parson Parker was in flood trouble most of the way from Boston to Astoria, and the forests were ALL old growth in those days, continuous along the rivers. It would have been natural for the parson to have blamed the virgin forests for the floods—if he had owned a nutshell mind that answered every question with, "This is a problem that only the government can handle."

The scholarly missionary took another trip on the first steamship of the Northwest. It was to the mouth of the Columbia.

The Lindbergh law, making transport of a kidnapped person across state lines a federal offense, was passed in 1932.

loved Sam Parker's book. Me too.

"The verdure of the trees and plants," he noted, "the red indigenous clover in full sweetness . . . and the mildness of the season, all combined to make the scene enchanting. It was on the shore of this bay where I

Use Mail Tribune Want Ads

**Two Pedestrians Die In Portland Accidents**  
By UNITED PRESS  
Two Portlanders died within a few hours of each other Saturday in week end traffic accidents. Both were pedestrians struck by cars.

Jesus E. Diaz, 63, died in Emanuel hospital in Portland a few hours after he was struck by a motorist near his home.

Corinne Buckwell, about 72, was pronounced dead after being struck by a car.

**Buy At Builders Supply**

**QUALITY BLOCKS**  
Bricks, Flues  
Drain Tile  
127  
W. McAndrews  
Phone 2-4107

**SPECIAL!**  
**Coffee Mugs**  
Large size. Decorated porcelain coffee mugs. Attractive and will take hard usage.

REG. 35c

Special 6 Days ONLY . . . . . **23c**

**GRISWOLD BRAND**  
**First Quality No. 9 CAST IRON SKILLET**  
Ground and Polished.  
11 3/8" Diameter.

REG. \$3.29

NOW ONLY **\$2.49**

**We have the AMF DEWALT 'Power Shop'**

Model MBF 3/4 H.P. Motor

Only \$239 delivered (saw blade and custom-built motor included)

Here's America's most complete home workshop! It's 12 power tools in 1—does everything in wood working—makes every cut and joint! So easy to operate and learn you'll be doing expert work in a few days—even if you're a beginner. See free demonstration here today.

**Your BEST BUYS**

**IN HARDWARE & HOUSEWARES**

ARE FOUND AT

**Hubbard Bros.**

**SPECIAL!**  
**COCO Door Mats**  
Super LB. Grade 14"x24"  
Coco Door Mat made in India.

REG. \$1.95

Special 6 Days ONLY . . . . . **\$1.47**

**WOOD DOWELS**  
36" Hardwood Dowel Stock in 1/4, 3/8, 1/2, 5/8, 3/4, 1" sizes.

**10c to 35c**

**Nu-WAY WEATHER STRIP FOR WINDOWS AND DOORS**

**KEEPS COLD OUT. KEEPS HEAT IN!**

The low-cost metal and felt Weather Strip can be used with perfect results on any type of door or window, either double hung or swinging.

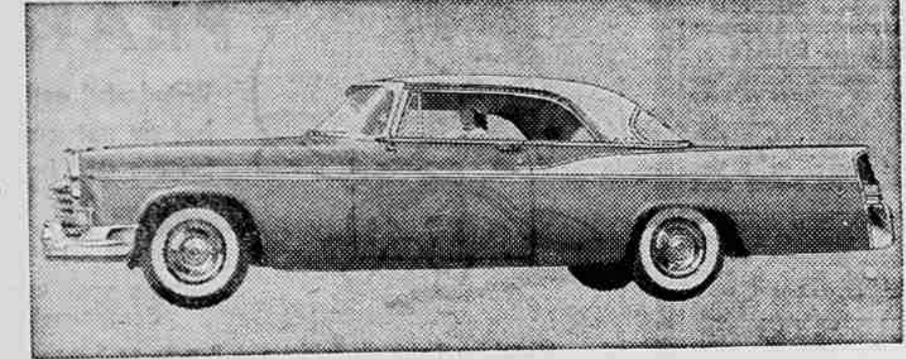
**EASIEST STRIP IN THE WORLD TO PUT ON!**

Anyone, regardless of experience, can install Nu-Way Weather Strip with perfect results. You can quickly, easily, and inexpensively weather-strip your own home. Comes complete with nails and full instructions.

18' COIL . . . . . **95c**

# AN INVITATION... to the man who is driving any car in the medium-price class

How you can own a bigger, more powerful Chrysler Windsor V-8 for the cost of a medium-priced car



Frankly, we believe you will find that the Chrysler Windsor is the only real luxury car that sells at a medium price . . . a car far in advance of its contemporaries and ahead of its time. We would like to put you behind the wheel of this car . . . because we've found from actual comparative demonstrations that 3 out of 4 open-minded men who drive a Chrysler for the first time prefer it to anything else.

There are many reasons. In the first place, the 1956 Chrysler is the only car in its price class that has been completely restyled this year. It has that "hair-trigger" look for which designers have been striving many years. We call it "PowerStyle."

But there's more to the Chrysler story than styling. There's power . . . more power to pass safely when necessary . . . more power to drive without effort . . . more power to stop.

There is not a car on the road today as completely power-operated as the "PowerStyle" Chrysler. Its PowerFlite transmission is controlled by pushbuttons . . . the

ultimate in automatic, foolproof control. But do Chrysler's competitors have this mechanical trouble-free system? *Not yet!* Chrysler's PowerPilot Steering works full time . . . does 80% of the work, not just in parking, but in long distance driving, in traffic and in rough going. Competitive power steering cuts in and out . . . does only a fraction of this job.

And what about engines? Chrysler was first to adopt the principles of the airplane-type V-8 engine. Today's engine is a new and bigger version of this engine . . . 250 hp in the Windsor

Spiritfire V-8\* . . . 280 hp in the New Yorker FirePower V-8 and now 340 hp in the blazing new Chrysler 300-B.

Then there is the all-important matter of brakes. Chrysler's newly designed PowerSmooth Brakes not only bring you safer, surer, straight-line stops—they outlast the others 2 to 1.

So if you have been driving another make of car in Chrysler's price class . . . ask yourself this question: Don't I want to know what my money can buy before I spend it? Then make a drive-them-both comparison. We'll leave everything else to your judgment.

\*With the addition of the Chrysler Power Train at slight extra cost.



**"PowerStyle" CHRYSLER the year-ahead car!**

**HAMLIN MOTOR COMPANY**  
121 North Bartlett St. Phone 2-6286

**AMF products**  
ARE BETTER... by design  
AMERICAN MACHINE & TOOL COMPANY

**SAVE! SAVE!**  
Odds and Ends and Broken Lines!

Hubbard's have completed their inventory and have found a good many items which have become broken lines or are one of a kind. These items have been assembled on special tables in the Housewares Section, in the Hardware Section and in the Industrial Section. When you are down town stop in and check them over. All items on these special counters are drastically reduced.

**Polyethylene Plastic Items**  
For Household and Kitchen Use!

Polyethylene Household and Kitchen Plastic Items are increasing in number because they are increasing in popularity with the public. Polyethylene is the unbreakable squeeze bottle plastic—will not distort in hot water—cleans easily—is odorless and tasteless. Here is a list of the more popular items now in stock.

- Tumblers
- Cereal Bowls
- Infant Feeding Sets
- Pails
- Covered Pails
- Waste Baskets
- Jumbo Waste Baskets
- Covered Pitchers
- Measuring Pitchers
- Measuring Cup Sets
- Mixing Bowls
- Refrigerator Storage Sets
- Colanders
- Freshener Pans
- Ice Trays
- Gadget Trays
- Cutlery Covered Trays
- Butter Dishes
- Funnels
- Dish Pans
- Wash Basins
- Baby Baths
- Cake Cover Sets
- Loaf Bread Boxes
- Pretzels-Covered Cakes
- Covered Shakers
- Dish Pans
- Wash Basins
- Baby Baths

**Plasti-Kote**  
Fast Drying  
**SELF SPRAY ENAMEL**

No Mixing—No Brush  
Just Press Trigger to Spray.

Twelve different colors and clear twelve-ounce can with separate nozzle.

**\$1.69**

**NEW! Contemporary Cabinet Hardware by Amerock**

... Ebony black with gleaming gold finish accents . . . for a touch of elegance in the best of taste. Easily installed on old or new cabinets, furniture, or built-ins.

**FIREPLACE GRATES**

Extra heavy all 5/8-inch Square Steel Fireplace Grates

- 19" (7-Bar) . . . . . \$4.80
- 23" (9-Bar) . . . . . \$6.00
- 28" (11-Bar) . . . . . \$7.20

**HUBBARD BROS., Inc.**  
MAIN AT RIVERSIDE MEDFORD PHONE 2-6189