

## Is That So?

A whirling snowflake settles silently upon the long outer guard hairs of a cotton tail; a wild rose distills its fragrance upon the evening air; a king salmon, who will not taste food for four months, fights his way up an age-old route to cast his milt at the very spot of his birth; a sleeping bear gives birth to an insignificant tiny cub which she will nurse for two months without waking; a white-



throated sparrow sings a pure and simple tune from a tangle of cat-briars . . . and so, another January with its abundance of life is upon us.

Does this hold with the popular belief that January is a month of death-like inactivity? Not at all.

To those who know the outdoors, life goes on with its myriad activities each month, including January, when wild roses may bloom in southern Arizona and black bears give birth to twin cubs under the snowbanks in British Columbia. And more. In each square foot of earth they know that life goes on in January according to a time-tried cycle. Within the earth, even, roots are very much alive; above, bare twigs are covered with buds—and what a monstrous error to attribute the forming of buds to the coming spring. Already during the previous spring tiny cells were earmarked; last midsummer they developed; by August they were ready formed; now in January, here they are—and making wonderful food for birds and mammals as well as giving promise of a year to come. Like-wise, beneath the frozen water and buried in the frostless soil and mud there are frogs, turtles, and dragon-fly nymphs. Hidden under decaying logs are fertilized bumblebee queens filling the January arc of their cycle.

**Can Find Wintering Birds**  
Without stirring far from our own winter shelters, most of us can find some wintering birds. Among them, keeping up their incessant scolding, are the easily-recognized chickadees. Besides, there are the junco, screech-owl, bluejay, ruffed grouse, bob white, prairie chicken, the nut-hatch which always zig-zags up the trunk of trees, several sparrows including the singing white-throated, cardinal, tufted titmouse, and downy woodpecker.

Partly, life in January consists of deep sleep with wakefulness never far off. Turn a fragment of rotting log and there you may find several tightly-curved black and red-brown woolly caterpillars. Pick one up, cup it in your hand, and blow upon it gently until it is warm. The temporary warmth will awaken it and now in mid-January, months ahead of its appointed time, it will straighten out and crawl in your hand. Lay it down in the cold again and it will re-curl and fall into a profound sleep to be awakened naturally by May's warmth.

January offers many such opportunities for observation. Because of the bare shrubs and trees, cocoons may now be easily found, collected and studied. These may be kept in cages indoors until they "hatch"—and to reassure yourself of the botanizing ability of these insects, see how each type of cocoon is resting on a certain type of plant.

Or with trees threadbare, it is easy to find and study bird nests some of which you will find pre-empted by wasps, bumblebees and even field mice. Should you find young mice, sisters will be more advanced than their litter brothers, and ready to leave the nest and find mates a week earlier, thus avoiding inbreeding.

**Study Camouflage**  
Now that snow is king, do not neglect to study the marvelous camouflage of animals in snow country. Note how the weasel has shed his summer dress of brown for a coat of pure white. All except the tip of his tail which remains black. (Should you ask a naturalist why that tip remains black, I am sure he will say: "That no one knows.") Yet in the deep south where little if any snow falls where these same weasels do not change color, remaining brown all winter.

And what better time to study the snow than January? As it falls, turning and drifting down in the hushed air, flake piling on flake, softening the sharp contours of rocks, mounding the top of each fence post, making trees appear ghostly, and sprinkling your dark coat sleeve, then take out a hand-lens and study the flakes. This I guarantee—of the billions and billions to fall around you, no two will ever be exactly alike.

Then go out in the snow-floored woods as the morning

By EUGENE BURNS  
Ranger-Naturalist  
sun slants in. There you will not only find footprints to be identified but also a record of the night's romances and tragedies. While here you will find where an owl struck down a kangaroo mouse, there you will see where a flying squirrel pursued an indifferent mate; while here you will see where a coyote pulled down a starved deer, there you will find where a grouse slept warmly overnight in a hole in the snow; and where branches rest low on the snow, the winter wind will pen for you his autograph.  
(Copyright, 1956, by Eugene Burns)  
(Released by McClure Newspaper Syndicate)

Free: By special arrangement with the editors of the Encyclopedia Americana, my panel of judges will award each week to the readers who send me the best true-life nature adventure, the best nature observation, or the best question on nature and wildlife, a complete 30-volume set of this world-famous reference work in a handsome Sealcraft binding. Each week new submissions will be considered. Sorry, I simply can't answer your many friendly letters. Please address your letter to: IS THAT SO? care Medford Mail-Tribune, Box 575, Sausalito, Calif.

## Taxable Property Rules Are Issued

Rules to help personal property taxpayers take advantage of a new "monthly-average" method of reporting taxable property has been issued by the state tax commission.

Under the new law, personal property taxpayers have a choice of making returns either on the monthly-average basis, or on the Jan. 1 date as in prior years. The option will give relief to those who carry a large inventory of goods, livestock or merchandise on Jan. 1, but a smaller amount during the balance of the year.

The Jan. 1 reporting date is still in effect, with March 2 the deadline. Copies of rules and regulations are available through the county assessor's office, county house, or Commissioner Samuel B. Stewart of the valuation division of the state tax commission, Salem.

## Grange

**Grange Council and County Conference Meeting**  
The combined Grange council and county conference meeting for Jackson county will be held at Central Point Grange hall on Saturday, Jan. 14, starting at 1:30 p.m.

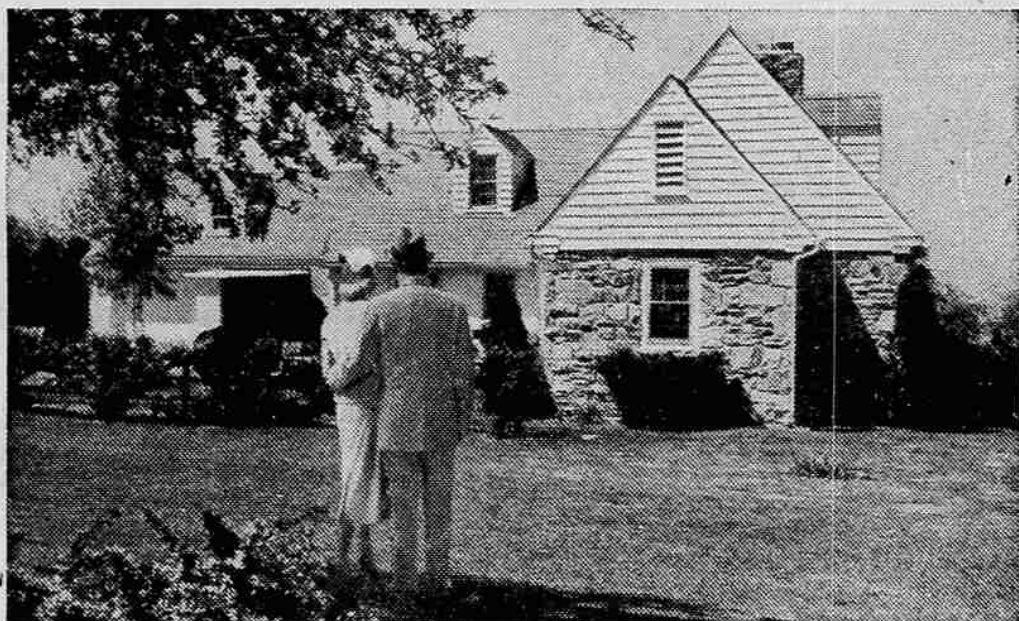
The afternoon session will be devoted to group meetings of all masters, overseers, lecturers, secretaries and the charmen of the following committees on agricultural, home economics, legislation, and insurance agents.

Following the afternoon session will be a pot luck dinner at 6 p.m. Hot rolls and coffee will be furnished. The evening session will open at 8 p.m.

All Grangers are invited to attend in the evening, especially all Grange officers in Jackson county. There will be contest prizes for officers attendance.

This will be the only meeting of its kind held this year. Demonstrations of Grange work and questions and answers will also be given to aid Grange officers.

If you're saving for a home . . .



Where you save does make a difference

Just consider the advantages you get when you put your savings in an insured Savings and Loan Association . . . Excellent returns from your money. Modern, efficient, forward-looking service.

And, of course, your money is safe because in these Associations your savings are protected by sound management and substantial reserves. They are insured up to \$10,000 by the FSLIC—an agency of the U. S. Government.

No wonder Americans are now putting more of their savings account dollars into insured Savings and Loan Associations than anywhere else! Clearly, it pays to save in insured Savings and Loan Associations!



This sign identifies us as a member of The Savings and Loan Foundation Inc., a nationwide organization of insured Savings and Loan, Building and Loan and Homestead Associations which sponsors this message in Life, The Saturday Evening Post and U. S. News and World Report.

Investments Made by the 10th of January Earn Dividends as of the 1st



**GETS HIS FAMILY BACK**—A 15-year-void is filled aboard the President Wilson as the liner arrives in San Francisco from the Orient and reunites Nicholas Romanoff, merchant seaman, with his wife (lower right) and daughter, Irene, 15. Romanoff hadn't seen his daughter since she was six months old. Mother and daughter were visiting Mrs. Romanoff's parents in Manchuria and were caught by the war. Both the Russians and then the Chinese Reds refused them permit to leave Manchuria until recently.

## Two Bicycle-Auto Accidents In City

Wilbur R. Brogan, 14, of 503 South Holly st., suffered a fractured left leg and cuts Friday night when the bicycle he was riding and a car driven by David L. Colby, 311 Howard ave., collided, city police reported.

Officers reported the car struck the bicycle while both were traveling on Stewart ave., during heavy rain. Brogan was taken to Sacred Heart hospital.

A second bike-car collision was reported by police Friday at Fourth and Front sts., where a sedan driven by Wanda Mae Johnson, Beal lane, collided with a bike operated by Gordon Roy Lilly, 8, of 4 East Clark st. No injuries occurred, police said.

A coupe driven by Frederick W. Combs, 508 Edwards st., sustained damage to the left front fender and front end Friday when struck by a Southern Pacific engine at the Main st. crossing.

## Rh Blood Factor Discussed At Meet

The problem of erythroblastosis, an illness resulting from Rh blood type differences, was discussed last week at a meeting of the obstetrical staff of Sacred Heart and Rogue Valley Memorial hospitals.

In a paper prepared by Dr. Donald McGeary, Phoenix, he said the role of the Rh factor in expectant mothers has been known since 1937, and that problems with a newborn baby may arise when the mother's Rh blood type differs from that of the father.

In recent times, medical research and understanding have led to techniques in which the entire blood supply of the baby can be replaced. The technique may now be carried on in Med-

## Harrisburg Girl Killed In Crash

Harrisburg — (U.P.) — Delora Lydia Neuschwander, 19, daughter of Mr. and Mrs. Emory Neuschwander of Harrisburg, was killed four miles north of here Friday night when the car in which she was riding collided headon with a California vehicle.

Five other persons were hospitalized in Eugene after the collision involving cars driven by Lyle N. Neuschwander, nephew of the dead girl, and Rival Hurlburt of Weott, Calif. Hospitalized at Eugene were Neuschwander, Hurlburt, and Hurlburt's wife, daughter and mother.

## Hedrick Students Hold Pep Assembly Friday

Hedrick junior high school students Friday afternoon held their first assembly preceding the Grants Pass-Hedrick basketball game. President Tony Monroe opened the assembly.

Taking part in the program were the Stingers pep group, who went through marching formations; yell leaders; a ninth grade skit "The \$64,000 Question;" and majorettes.

The North Atlantic has recorded 261 known hurricanes in the last 68 years.

## CABINETS & Kitchen Built-Ins

Built To Order  
PRICES RIGHT!

GRAHAM'S  
CABINET SHOP

824 1/2 No. Riverside, Medford  
PHONE 2-4969

## Trowbridge & Flynn's Greatest Year End

# Clearance Sale!

## Westinghouse APPLIANCES



Model H1  
**25" LAUNDROMAT**  
Fully Automatic—Portable—Under Counter or Free Standing Insulation



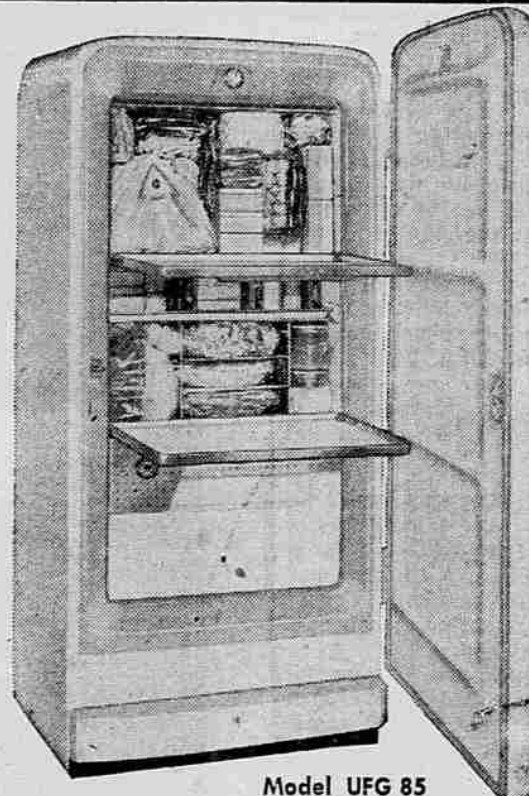
Model AD-1  
**DRYER SPECIAL**  
Full Size—Automatic  
Direct Air-Flow  
Fast Drying

# LOOK

SEE THIS SENSATIONAL PAIR ON OUR SHOW ROOM FLOOR

**YEAR-END CLEARANCE**  
For BOTH Westinghouse  
**LAUNDROMAT & DRYER**

YOU GET BOTH FOR ONLY \$279.95



Model UFG 85  
**8 1/2 Cu. Ft. FREEZER**  
300 LBS. FOOD STORAGE CAPACITY  
Regular Price \$369.95

NOW ONLY **\$220<sup>00</sup>**



Model PH 80  
**8 Cu. Ft. REFRIGERATOR**  
PUSH-BUTTON AUTOMATIC DEFROST  
Regular Price \$239.95

NOW ONLY **\$199<sup>95</sup>**

REGISTER NOW FOR **FREE** LAUNDROMAT  
Come In - Ask Us For Details  
No Need To Buy - No Need To Be Present To Win

LOW DOWN PAYMENT

YOU CAN BE SURE... IF IT'S Westinghouse  
Tune In On "Studio One" KBES-TV - Monday, 7 p.m.

EASY TERMS

# TROWBRIDGE & FLYNN

214 W. Main • Medford • Phone 2-5211