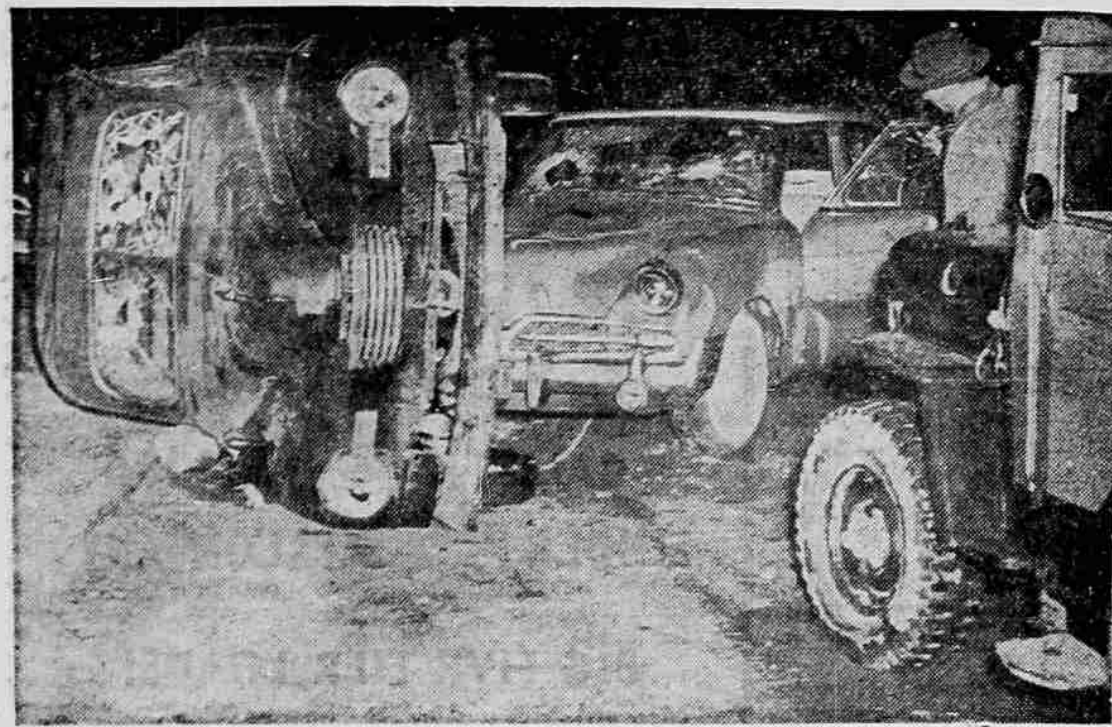


Monroney Charges White House Suppression of Report on Transportation



'WE RESTORED ORDER'—About 2000 striking pickets stacked cement blocks across entrances to Westinghouse plant in Columbus, O., and armed themselves with clubs. When police tried to clear entrance into the plant a riot broke out. Wrecked and overturned autos (above) stand as mute evidence. Before order could be restored, nine persons were taken to a hospital, one of them dying of a heart attack. Ninety strikers were arrested.

Man Tells of Being Forced by FBI To Rejoin Communist Party

Albuquerque, N.M.—(U.P.)—A 45-year-old former Oakland, Calif., laborer charged today the FBI forced him to rejoin the Communist party here to serve as an undercover agent and to help expose a local Red cell.

The FBI denied the charge.

Cleve Owens said in an affidavit that Communists are, or have been, interested in keeping close touch with employees at top secret Sandia Atomic Base here which manufactures the trigger for the atomic bomb, or at Kirtland Air Force Base, whose planes drop the A-bomb.

Sisters Harassed

Owens' statement followed the resignation of two sisters, Miss Mammie Gallegos, 22, and Mrs. Iola D. Ellis, 24, from their jobs at Sandia base. They charged they were harassed because they had associated with a former Communist. The former Communist turned out to be Owens, a half-brother.

Owens made his statements in an affidavit for the Albuquerque Journal, which first had exposed the charges by the sisters.

D. A. Bryce, agent in charge of the Albuquerque FBI office, issued a terse denial.

Owens said he joined the Communist party after the local union to which he belonged while driving a cab in Oakland

Man Sentenced To 90 Days In Jail

Oscar E. Self, 38, of route 1, Ashland, was sentenced to 90 days in the county jail today after he pleaded guilty in district court to contributing to the delinquency of a minor.

He was charged with aiding and abetting the theft of gasoline by a 17-year-old.

Cecil Roy Wood, 52, Longview, is held in jail under \$1,500 bond after arraignment in court yesterday on a charge of obtaining money under false pretenses. The case was continued until Jan. 6 by Judge Rawles Moore.

Also arraigned yesterday was G. E. Peterson, Camp White, who was bound over to the grand jury and jailed under \$1,500 bond. He is charged with cashing a check with no funds.

Use Tribune Want Ads

Anti-Aviation Slant Said 'Raw,' Lee Ouster Probed

Washington—(U.P.)—Sen. A. S. Mike Monroney charged today that the White House has "suppressed" a section of a cabinet-level report on transportation because it is "so raw" in its anti-aviation slant.

The Oklahoma Democrat said his Senate Commerce subcommittee on aviation will try to "flush out" the report to prove the existence of a "ground-club" in the administration.

Part of Investigation

The subcommittee's interest is part of its investigation into the ouster of Frederick B. Lee as civil aeronautics administrator. Monroney has claimed that Lee was "railroaded" out of the top CAA post late last year by a "ground-minded clique" headed by Commerce Secretary Sinclair Weeks and Commerce Undersecretary Louis S. Rothschild.

Lee, a Vermont Republican, was called back before the subcommittee today for his second day of testimony. The subcommittee wanted details of his conversation with Presidential Assistant Sherman Adams preceding the White House announcement of Lee's resignation.

Drafted by Committee

The controversial transportation report, released last April, was drafted by a cabinet-level Transportation Advisory Committee to the President, headed by Weeks. The report encountered bitter criticism from the trucking industry for its major recommendation that federal regulations be liberalized so as to give railroads a better chance to compete with trucking and water transportation.

Monroney said the aviation section of the report was "so raw that I understand the White House suppressed it."

Weeks thus far has declined to appear before the subcommittee, delegating Rothschild, who is in charge of transportation policy in the Commerce Department, as his spokesman. Monroney said the subcommittee will "re-invite" Weeks to testify and predicted the commerce secretary "may want to come after we get all the testimony on the circumstances behind the Lee ouster."

To Ask Explanation

If Weeks does appear, Monroney said, he will be asked for an explanation of Lee's statement that there is a "high-level proposal" to sell the vast government-owned communications network of the CAA to American Telephone-Telegraph Co. or Western Union.

Slayer of Airman, Girl Friend Sought

Great Falls, Mont.—(U.P.)—Air Force and civilian officers worked together today in an attempt to locate the killer of an airman and his teen-age girl friend.

The couple was killed Monday night and Tuesday morning in Chinese-execution type murders, the young airman in a lovers lane west of the city and the attractive girl on an isolated road north of the city.

Bullet in Girl's Head

The fully-clothed body of Pat Kalitzke, 16, Great Falls, unmarked except for the bullet hole in the back of her head, was found yesterday afternoon by a county maintenance worker as he graded a road.

The man spotted the girl's dress about 20 feet down an embankment along the road. She had been shot at the top of the embankment and her body rolled to the bottom.

Found Tuesday was the body of her boy friend, A2C Lloyd Duane Bogle, 18, Waco, Tex., whom she had planned to marry. His body was found in the lovers lane with his hands tied behind his back by his own belt. The body was lying face down beside the car.

No Sign of Struggle

There were no indications of a struggle, Sheriff D. J. Leeper said. He said the murder may have been committed by a person known to the airman. The airman was apparently kneeling when shot through the back of the head.

Robbery was discounted as a motive. The airman's wallet contained \$5 in currency and an expensive camera was left in the car, which had been left in gear with the emergency brake on.

Leeper said officials at nearby Malstrom Air Force Base where holding an airman who allegedly argued with the slain youth on the eve of the shooting.

"He is a suspect and that is about all," Leeper said.

Chile Union Strikes Against 'Hunger Bill'

Santiago, Chile—(U.P.)—The Workers' Central Union Wednesday night called a strike of its 1,000,000 members to start midnight Sunday in protest against a government bill to freeze prices and wages.

The Central Union said the measure approved by the Senate Wednesday was a "hunger bill which places the burden of the economic crisis on the workers."

The Wright-Patterson air force base has 7,900 acres and is one of the world's largest air installations. It contains more than 1,000 buildings and is an important military center.



INCREASING MOBILITY of infantrymen, this is new aerocycle being tested at Camp Kilmer, N. J. Pilot stands on platform over rotor blades and guides 200-lb. helicopter by leaning in direction he wishes to travel. Control mechanism is similar to motorcycle; maximum speed, 65 mph. (International)

NOTICE!!

Beginning January 1, 1956, and until the completion of our new building THE MEDFORD FEED & SEED will do business temporarily in the old Co-op building at the corner of 4th and Fir streets. Across 4th Street from where we are now located.

The telephone number will remain the same
Geo. C. Barr, Mgr.
Medford Feed & Seed

Only **Dennison's** gives you
real home-kitchen flavor!



Here is chili con carne that tastes like the finest homemade kind! Not too hot... not too bland—it's just perfect.

Dennison's Chili is slow-cooked the old-fashioned way to keep in all the extra goodness of these choice ingredients:

Tender good beef—big home-style pieces of juicy lean beef.

Plump rich beans—tasty and tender as your own home-cooked beans would be.

Nicely spiced sauce—slow-simmered the home-cooked way to keep "hot" and "bland" in perfect balance.

Try Dennison's Chili Con Carne with Beans in the economical family size or convenient regular size—look for Dennison's Plain Chili, too. Both delicious because both give you real home-kitchen flavor!

Get the large family size—and save!

Changes In Property Tax Forms Explained

Changes in the current personal property return forms were explained today by Andy H. Hawver, personal tax deputy in the county assessor's office.

A total of 5,400 forms were sent out by the office last week, and all must be filled out, signed and returned by March 2.

Three basic forms, with enclosures for form three, were sent to different categories this year, form one for merchants; form two for farm and ranch; and form three with enclosures for the remainder, including logging, contracting, garages, motels and professional offices.

Instruction sheets are enclosed with each return.

Hawver stressed that this year's duplicates, which are included in each return, may be kept by the taxpayer. The assessor will notify each payer of his property value prior to the board of equalization session.

He asked that persons seeking help at the office bring their forms.

Slim Japan Majority Wants China Recognition

Tokyo—(U.P.)—A public opinion poll conducted by Kyodo News Service showed today a slim majority in Japan favors recognition of Red China and withdrawal of American troops from Japan.

The agency said it questioned 2,500 persons throughout Japan and 52 per cent wanted diplomatic ties with Red China. The poll found 54 per cent wanted American troops withdrawn and 50 per cent opposed expansion of U.S. military bases.

The training college of the Royal Canadian Mounted Police at Regina, Saskatchewan, has perhaps the only church in the world used exclusively by policemen.

Edmonton, Alta., in western Canada, has reached more than 200,000 in population. At the turn of the century it was a frontier trading post.

Use Tribune Want Ads

11th and OAKDALE

OAKDALE MARKET

LOOK AT WHAT'S COOKIN' IN

FOOD BUYS

Colored

Fryers

OR

3-lb. Average STEWING

HENS 98¢ each

CHUCK

Roast U.S. Choice lb. 45¢

Morrell's Sausage Rolls lb. pkg. 33¢

Vitamin Packed NAVEL

Oranges

Fill Up a Tote Bag for

49¢

Crispy Bunch CARROTS 2 bun. 17¢

Guatemala BANANAS Golden Ripe 2 lbs. 29¢

Crisp Firm LETTUCE Head 10¢

Standby

Catsup 14-ounce Bottle 2 for 39¢

Peas 303 CAN 2 for 39¢

Pineapple Can 29¢

Crushed, No. 2 Can

Corn 303 CAN 17¢

Whole Kernel or Cream Style

Open Week Days 8 'Till 8
Sunday—10 'Till 6

OAKDALE MARKET

We Give Northern Stamps