

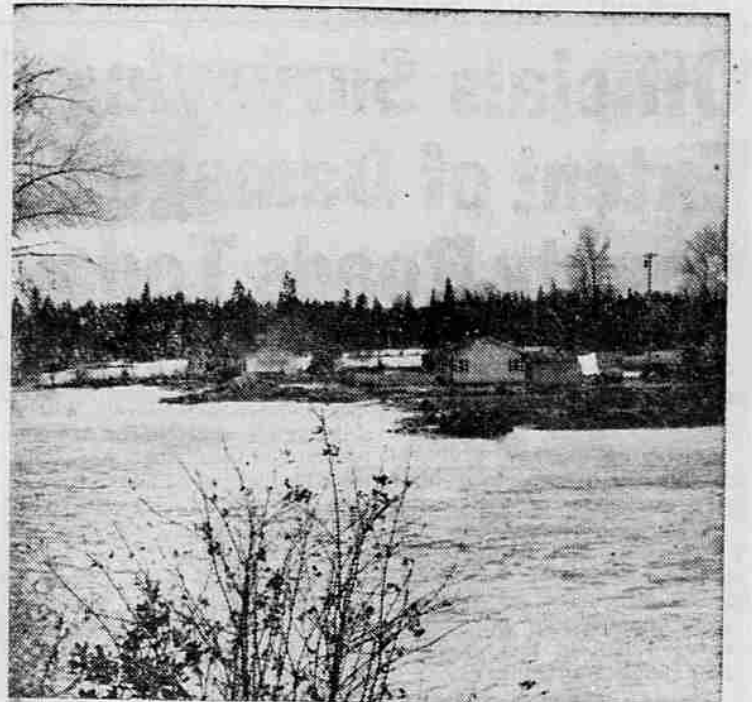


SCENE OF RESCUE—This dramatic aerial photo, taken by Carl Landis of the Landis-Shangle studio from a Mercy Flights plane, shows the old highway bridge and the railroad bridge across the Rogue river at Gold Hill, near the home of Barney Governor who was rescued from his house yesterday afternoon after being surrounded by surging flood waters for more than 12 hours. The arrow at the left of the picture shows the

house. Rescue was effected by a jury-rigged breeches buoy, one end of which was attached to the metal superstructure of the railroad bridge, and the other to a wrecking truck which drove along the tracks to the left out of the photographed area and around a bend until the highline ran directly over the house. The picture was taken shortly after the crest of the flood passed. —(Landis-Shangle photo)



RESORT A SHAMBLES—Riffles on the Rogue, a resort on the Rogue river above Shady Cove, was virtually wiped out by high water Thursday morning. It is shown soon after the flood crest passed in the picture above, taken by Don Hinson of Eagle Point.



HOMES SURROUNDED—Some of the luckier residents of riverside areas were surrounded, not inundated, by waters of the rising Rogue yesterday. The picture above shows a scene that was all-too-typical in the Upper Rogue area yesterday as waters rose. The picture was taken by Don Hinson.

Gold Hill Man Saved By Skyline

Governor Rescued After 12 Hours In Flooded Residence

Barney Governor, about 65, was rescued at about 2:50 p.m. yesterday after spending more than 12 hours in his house surrounded by flood waters of the Rogue river some 50 yards upstream from the Gold Hill railroad bridge.

Several other marooned families were safe, according to state police, who said they had received no reports of anyone missing. Several officers were dispatched to marooned families yesterday morning.

Long Skyline
 In rescuing Governor, a skyline several hundred feet long was devised by Ernest Delos Walker, brothers who operate separate garages in Gold Hill, from cable furnished by the California Oregon Power company. Several other means of rescue were considered, but none were deemed feasible.

One end of the heavy cable was secured to the top of the steel railroad bridge, with the other end connected to a wrecker furnished by Ernest Walker. The wrecker was driven along the railroad tracks, which turn and generally follows the river upstream on the east side.

Walker drove the wrecker around the curve until the skyline tightened straight over the roof of Governor's house. Once tight, a 55-gallon empty gasoline barrel was attached to the skyline with block and tackle.

Rides Barrel
 Paul Fullmer, 213 Lincoln st., Medford, volunteered to ride the barrel out to the house above flood waters. Fullmer lowered to the Governor house roof, where he chopped a hole with an axe.

Governor kept above water by remaining on a table or shelf in one room. Fullmer helped Governor in the barrel, and the wrecker winch brought him to safety.

The barrel was returned for Fullmer, and the rescue was complete.

State police Sgt. Russell H. Brendle, who witnessed rescue operations, said about 35 volunteers participated in rescuing Governor, and more than 100 spectators gathered at different times.

One-story House
 The house, a one-story frame structure built on a pier to the old highway bridge, was partially torn apart by flood waters, and Governor's car had been washed downstream and lodged against the railroad bridge.

Sgt. Brendle said Governor was "shaky" and hungry when rescued, but apparently suffered no other ill-effects from his ordeal. He was taken to another home in Gold Hill.

Sgt. Brendle estimated that water started entering the Governor residence between midnight and 1 a.m. Wednesday. By the time rescue operations were under way, the flood crest had passed and water had receded between two and three feet. Rocks were visible in areas around the house when Governor was rescued.

Consider Other Means
 Prior to the Walker's skyline idea between the railroad bridge and a wrecker, a skyline from

VALLEY'S WORST FLOOD RECEDES; NEW RECORDS

Paratrooper Walks To Safety After Five Days in Wilds

Tacoma—(U.P.)—A tough paratrooper, whose frozen feet could not stop his willpower, was to be reunited with his Japanese wife and three children today in a pre-Christmas Eve celebration of his survival of five days in the sub-freezing weather of the Cascade mountains.

The "nightmare" was over for Sgt. John M. Horan, Maynard, Mass., who leaped from a spinning airplane last Sunday. Horan rested in a bed at Madigan Army hospital near here. His wife, Teruko, and the couple's three children, Kenneth, 5, Michael, 1, and Lorraine, 3, months, were to be at his bedside later today.

The soldier's wife, who arrived in Seattle only last Tuesday with the children from Tokyo, had to be given a sedative last night. She was weak from worry and the emotional strain.

One Big Nightmare
 "I knew I couldn't stop if I was going to walk out alive," was the way Horan put his version of "a routine jump when I jumped out." But what happened afterwards was one big nightmare.

Horan walked to safety when he found his way yesterday to the Rustic Inn on Highway 10 near Easton, Wash., just east of snowy Snoqualmie Pass.

The sergeant leaped out of an Air Force C45 Sunday shortly after noon, when the craft went into a spin over the bleak Cascades. He was relieved to learn the pilot of the plane righted the craft and landed it safely.

Lived on Cocoa
 "I found a cabin Monday morning and I broke a window and got in," he said. "I found some matches and got a fire going. I found cocoa in a cupboard and I melted some snow and I moved as close to the fire as I could. I didn't know then I was going to live on that cocoa for the next four days.

the hillside on the west bank of Rogue river was considered. The distance was too great to make a rescue feasible.

Sgt. Brendle said consideration also was given to Medford Fire department's ladder truck. Because of a slight bank of the bank of the railroad tracks on the curve and a horizontal position of the extended ladder, Fire Chief Gordon Barker relieved the truck would be off-balance and roll over.

Also considered was construction of a scaffold built from the railroad tracks, but the idea also was deemed not feasible.

The Jackson County Disaster Car, which is maintained for saving lives during disasters, stood by at the scene yesterday afternoon, but rescue operations had started.

1 SHOPPING DAY LEFT
 Help Fight TB
 Buy Christmas Seals

Table Rock Papers Delivered By Air

The slowly receding floodwaters were still high, and the Table Rock area was still cut off from the outside world yesterday afternoon. Young Wayne Wyatt was waiting near the Table Rock store at about 3 p.m. A Piper plane, piloted by Kenneth Owen of the Medford Air Service, swooped low over a nearby field, and Business Manager Gerald Latham dropped overboard a wire-bound bundle of tightly-wrapped newspapers. They fell and bounced on the field.

Christmas Pilgrims Journey To Bethlehem

Jerusalem, Israeli Sector—(U.P.) Hundreds of Christmas pilgrims plodded today along the dusty road to Bethlehem through villages torn three days ago by rioting and gunfire. Bright sunshine streamed down on the little town where Christ was born and there were few signs of the bloody riot that the Arab Legionnaires of Jordan suppressed with machineguns and tear gas.

Washington—(U.P.)—The Army is bolstering its atomic fire-power in Europe by sending more "Corporal" guided missiles abroad.

Road Conditions

Siskiyou—Motorists advised to carry chains; 4 inches new snow.
 Green Springs — Carrying chains advised; 4 inches new snow.
 Prospect — One-way traffic from slide; no heavy traffic; three inches new snow; snowing hard.
 Highway 99 in California—Highway open; snow in Weed area.
 Highway 99 north—Traffic moving; detour between Gold Hill and Grants Pass; no heavy traffic.
 Crater Lake National Park—Highway 62 open; chains advised; 14 inches new snow; present depth 78 inches; snowing; skiing fair to good.

Snow in Mountains Lessens Threat of Additional Rising

Jackson county stream levels were lower today after the valley's worst flood since the 1890's.

Bob Church, meteorologist at the Medford weather bureau, said flood crest readings at Dodge bridge and Grants Pass were the highest ever recorded. The highest at Dodge bridge, Church said, was 12.3 feet, or 3.3 above flood stage of 9 feet. At Grants Pass, a crest of 30.16 feet, or 13.16 above the 17-foot flood stage, was reported.

Dodge Bridge Reading
 The Dodge bridge reading yesterday morning compares with previous highs of 11.08 feet Jan. 18, 1953, and 10.3 feet in October, 1950. At Grants Pass, the crest of the 1927 flood, which is considered one of the most severe in this area, was 28 feet.

The Rogue river receded rapidly once the flood crest passed. Late Wednesday afternoon and early evening, the river gave indications of a rapid rise. The crest passed Dodge bridge early Thursday morning, and by 5:15 p.m. yesterday, the stage was 9.2 feet, just 2 of a foot above flood stage, according to Church.

Rain which started falling about dusk yesterday threatened another rise. The threat was lessened when rain in higher altitudes turned to snow early last night.

Receding Expected
 Church said streams probably would show some rise early today, but were expected to start receding later today and prospects for less rain were indicated in a five-day weather forecast.

Church said the forecast calls for new storm fronts from the southwest to pass inland on a line generally more to the south, with the brunt of the storms occurring in northern California. Precipitation was forecast for this area, but amounts are expected to be less than during the past few days.

A total of 4.76 inches of rain in valley and snow above 2,500 feet through Saturday. Low tonight 34. High Saturday 42-45. Sunday outlook cool with showers and snow in mountains.

Weather
 FORECASTS: Showers of rain in valley and snow above 2,500 feet through Saturday. Low tonight 34. High Saturday 42-45. Sunday outlook cool with showers and snow in mountains.
 Temp.
 Highest Yesterday 60
 Lowest this Morning 34
 Prec. to 4:30 a.m. Today .37

Eastern Oregon Gets High Water; Tokatee Marooned

Portland—(U.P.)—Flood conditions spread east of the Cascade mountains in Oregon today while hundreds of persons were evacuated from their homes or marooned in western Oregon by high water.

The mighty Pacific storm that sent streams over their banks eased off today and the Umpqua river started going down slowly at Reedsport after reaching the top of dikes protecting the coastal town.

But the Rogue river, carrying its biggest crest in history toward the sea, was reported flooding at Gold Beach and residents feared water would hit main streets at high tide this afternoon.

Crooked River Overflows
 The Crooked river at Prineville overflowed early today and some residential areas were flooded north and south of town. Trucks stood by for evacuation and three feet of water covered part of the Paulina-Prineville highway.

In eastern Douglas county, 300 persons were reported marooned at Tokatee Falls. They included Morrison-Kundsen construction workers and their families, woods workers and employees of Copco. Power was reported out in the area, from which there are only two ways out. One, to Roseburg, was blocked by high water, and the other, from East Diamond lake, was blocked by snow.

Communications Disrupted
 Only communication with the area was by ham radio. Communications to the southwest coastal area still were disrupted. A ham radio operator reported the entire Coquille valley flooded.

The main Umpqua river, fed by its north and south forks, headed in flood stage toward the coast.

At Grants Pass, where a National Guard company was called out yesterday, state police reported the Rogue river dropping about eight inches an hour this morning. The Rogue reached an all-time high of 30.16 feet yesterday.

Families Evacuated
 An estimated 400 families were evacuated from their homes in the Grants Pass area and another 100 families were moved from homes in the Shady Cove district further upstream on the Rogue.

Southbound buses still were stranded at Grants Pass this morning as there was four feet of water over the highway at Savage Rapids dam. However, passenger traffic was being detoured south around an old river road from Grants Pass to Gold Hill. Northbound traffic was moving and it was hoped the water would drop enough to open the main highway south, providing, as one officer put it, "if there is any highway left under the water."

State police said lots of homes in the lowlands around Grants Pass still were surrounded by water.

Klamath Postoffice Crews Twiddle Thumbs

Klamath Falls—(U.P.)—The post office crews at Klamath Falls twiddled their thumbs today. All the Christmas mail had been distributed. But there was no jubilation. Trains and mail trucks carrying Christmas mail were blocked by floods and slides on all sides of Klamath Falls. Also blocked were the government paychecks postal employees had counted on for Christmas.

No. California Emergency Area



ANGEL-DOOR—Another of Medford's many attractive Christmas decorations is shown above, the little angel created on the front door of the Earl York residence, 820 East Main st. —(Brainerd photo)

Damage in Three Western States Set in Millions

San Francisco—(U.P.)—Raging coastal and mountain streams overflowed banks in three Western states today bringing death and destruction and driving thousands from their homes in the wake of week-long drenching rains, the worst in the Weather Bureau's history.

At least 12 persons were known dead, scores were reported missing, eight towns were flooded out completely, and more than 15 others were inundated as the streams rushed to the sea and made more than 15,000 homeless.

Property damage in northern California, western Oregon and Nevada was estimated in the millions. One estimate placed the loss at more than \$10,000,000, but no accurate check could be made.

State of Emergency

A state of emergency was declared by Gov. Goodwin J. Knight in northern California where the missing included 12 at the resort town of Santa Cruz where the San Lorenzo river isolated the city of 15,000 today. Eight of the missing there were reported swept to sea. The police teletype, only means of communication, said aid would have to be sent by air.

Ten persons were known dead in California. Three were at Santa Cruz, two others were listed by the Civil Defense at Eureka, while three drowned at Auburn in the American river, and two drowned earlier in the week at other points.

Towns Completely Flooded

The towns completely flooded in California were Pepperwood, Elinor, South Fork, Klamath, Klamath Glen, Weott—all in Humboldt county were the Eel and Klamath rivers flooded—and Wood Lake and Three Rivers in Tulare county. The resort city of Guerneville, flooded by the Russian river in Sonoma county, prepared for complete disaster.

Intermittent rains continued in northern California and whole gale warnings for southerly winds of 40 to 60 miles were posted from Half Moon bay, near San Francisco, northward. The series of storms was due to an unusual movement of warm moist air from the subtropics, that has struck a mass of low pressure Polar air.

Highways Shut Down

The floods cut off highways and railroads. There was no road or railroad open between northern California and Nevada. Many towns were isolated completely as the waters poured over the highways.

The Red Cross, National Guard, Sixth Army and Air Force mobilized forces in many areas to give aid, shelter and food to the more than 15,000 refugees.

River Bolts at Reno

Reno—(U.P.)—The Truckee river today overflowed its banks and began flooding Reno's downtown business section.

Weary workmen lost a 24-hour battle to hold the rampaging river in its channel through the heart of the city shortly after 7 a.m. when water began pouring over the banks.

Businesses Prepared
 Business establishments along both banks of the river were prepared for the surge of water.

National Guards and 500 air-men from nearby Stead Air Force Base joined employees in boarding up windows and entrances of business firms. An estimated 26,000 sandbags were heaped around them.

Standing squarely in the path of the rampaging river on opposite banks were two fashionable hotels, the Riverside and the Mapes.

Both hotels operated their casinos, bars and floor shows until about 2 a.m. when, putting precaution ahead of profit, they suspended operations.

Tables Carted Away
 Employees carted dice and 21 tables and roulette wheels out of the lavish casinos to places of safety on upper floors. Employees and bosses alike then pitched in to pile more sandbags

Washington—(U.P.)—Interest rates paid to banks and other private lending agencies making price support loans to farmers will increase one-fourth of one per cent, effective Jan. 1.