

YULETIDE DECORATIONS—Every year many Medford residents go to great lengths to decorate their homes and yards in the spirit of the Christmas season. The decorations include Santa Clauses, Nativity scenes and other imaginative types of decorations. The ones shown in the pictures above are three of the many representations of Santa Claus. At left are the porchtop reindeer, sled and Santa, together with festive tree in the window and decorated door, at the Roger Stearton home, 33 North Berkeley way. In the center is an illuminated Santa on the lawn of the Dutch Farfan home, 723 South Newtown st., part of an elaborate display. The roof-climbing Santa, sleigh and reindeer at right are atop the home of Dr. O. A. Welsh, 1300 East Main st.—(Brainerd photos.)

SWOLLEN STREAMS MENACE AREA

NATIONAL GUARD TO HELP AT GRANTS PASS

Portland—(U.P.)—The National Guard was ordered today to help in flood control work as the Rogue river reached an all-time high and western Oregon reeled under the impact of a blustery Pacific storm which sent families fleeing from their homes and crippled rail and highway traffic.

The storm was blamed for one death. Gov. Paul Patterson said he had ordered the guard out to help in flood control work and help evacuate persons stranded by the Rogue. Many power lines were reported down in the area.

The governor said "I have ordered Company C of the first battalion, 186th infantry, mobilized for 48 hours. If the situation requires, further orders will be issued."

With many smaller streams already out of their banks, the mighty Willamette soared over flood stage at Albany, Corvallis and Salem.

River forecaster Elmer Fisher said the crest was expected to reach 24 feet at Corvallis by 10 a. m. tomorrow, four feet over flood stage. A crest of 26 feet, six feet over flood stage, was predicted for Albany for 8 a. m. tomorrow. The Santiam at Jefferson was eight feet over flood stage, and was cresting at 10:30 a. m. today. Salem was expected to get a 26-foot crest at 2 p. m. tomorrow.

The Willamette was expected to crest at 19.5 feet in Portland at noon Saturday, 1.5 feet over flood stage. Seven Greyhound buses carrying 250 passengers were stranded in Grants Pass. The Rogue had dropped to 29.2 feet at 8:30 a. m.

GUARD TO HELP AT GRANTS PASS

ties had to cut their way through 30 to 40 fallen trees with power saws to bring out the body.

Wayne Amos, Crescent City, Calif., truck driver, escaped drowning last night when the Redwood highway bridge near Wilderville collapsed under the rear of his truck from the swollen Applegate river. The trailer plunged into the stream but the cab remained on the highway and Amos managed to reach safety.

State police said Highway 99, the main route through western Oregon, was blocked by high water at Harrisburg, between Medford and Grants Pass, north of Corvallis to all but trucks, and near Myrtle Creek. Highway 99 also was closed near the California line and the Green Springs route east of Ashland was reported blocked at Keno. Highway 101 was closed south of Coquille by a slide and again in northern California.

The Rogue valley was further cut off by a slide near the California border on the Grants Pass-Crescent City route.

The main Copco power plant at Tokatee Falls east of Roseburg was knocked out by three feet of mud. Other Copco plants were operating. At least 10 different areas near Roseburg were being evacuated. The Douglas county towns of Riddle and Myrtle Creek were reported isolated.

Radio hams reported the town of Coquille was isolated and was operating on emergency power after floodwaters cut light, power and communications lines. Ham operator Jim Armstrong said most extensive damage was collapse of a barn containing 100 to 150 head of cattle.

North California Ripped by Gales Torrential Rains Oroville, Other Towns Evacuated

San Francisco — (U.P.) — Torrential rains driven by gale force winds struck Northern California a new and devastating blow today, sending at least eight rivers on wild rampages and forcing the evacuation of scores of towns.

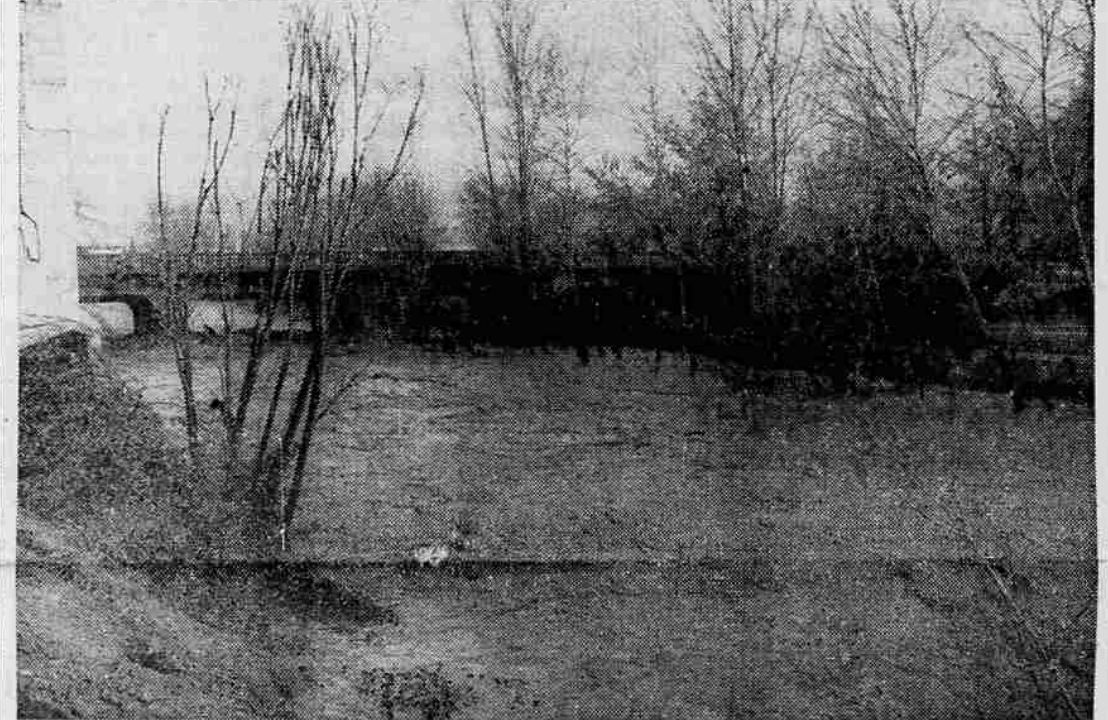
There was a slight let up in the heavy downpour at mid-morning but the weatherman said the fierce wind-whipped rain would resume later in the day.

Reports of towns being evacuated poured in from all over the northern half of California. One of the hardest hit towns was Oroville on the Feather river where the entire southern half of the city had to be evacuated. Homeless residents were given temporary refuge in the courthouse.

Air Field Flooded Late reports said "several hundred" people had been evacuated in Butte county, 200 alone at a labor camp near Gridley.

The commander at Hamilton Air Force base in Marin county ordered the "immediate evacuation" of all aircraft after flood waters moved in on the field. Hamilton said its planes would be flown to other bases for refuge, "any place in California or Nevada that has room for us." The aircraft at Hamilton include jet fighters, B29s and C119s as well as smaller planes and helicopters. "Everything's got to go," a base spokesman said.

The fresh rains, an extension of a storm that has continued almost without interruption for the past seven days, dumped as much as 6½ inches on some mountain areas in the past 24 hours.



BEAR CREEK HIGH—There was high water in and around Medford this morning, although damage reported here was far from being as serious as elsewhere in Jackson county. The view above is looking northeast across Bear creek toward Hawthorne park and the East Main st. bridge. Bear creek spilled over its banks south of the city, covering Barnett rd. with several inches of water, and to the north washing out an irrigation diversion dam and flume.

Jet Winds Slow Christmas Mail Across Pacific

San Francisco — (U.P.) — Hurricane winds over the Pacific abated enough today to permit resumption of air service to Hawaii but airline officials said there was little chance that a backlog of 15,000 pounds of Christmas mail and freight could be cleared before the holiday.

Planes of the United Air Lines and Pan American World Airways still were forced to carry extra fuel to buck "jet stream" headwinds ranging up to 100 miles an hour.

UAL flights from Los Angeles and Pan American flights from Seattle and Portland were routed to Honolulu this morning via San Francisco. Here the planes picked up more fuel before taking off on the shortest possible route to the islands.

United was running four flights today, two of them to make up for yesterday's postponements. There was a possibility a fifth plane would be sent out tonight.

Writer Gets Birdseye View of Valley Flood

(Editor's note: A Mail Tribune reporter was aboard a Mercy Flights plane this morning which carried police and civil defense officials over the valley to survey the flood situation. His story, written during convalescence from air-sickness caused by his first airplane flight, follows.)

By ALLEN REED Mail Tribune Staff Writer Flying from Medford airport, the first thing noticeable today was that the creeks are no longer creeks.

What was yesterday an irrigation ditch is today a river in its own right. The Rogue river, dark brown with mud and its surface dotted with debris, has no definable banks along much of its length between Camp White and Grants Pass.

The tiny figure of a man was on the roof of a small house above the railroad bridge at Gold Hill. From the air, it looked as though the house had been built in the middle of the river. One side had been torn away by the current.

Evacuate Families; Bridges Destroyed

Rain swollen streams in Jackson county last night left Medford virtually isolated, forced evacuation of more than a hundred families, and closed schools, bridges and roads.

State police this morning said the only route open out of the Rogue valley was over the Green Springs to Klamath Falls. And there water over Highway 66 at Keno was delaying traffic. More Rain Forecast Flood crest on Rogue river occurred at Dodge bridge about 6 a. m. today and hit Grants Pass

Highway 99 is now open to traffic out of the Rogue river valley into California, state police said early this afternoon. The route had been closed 12 miles north of Yreka, Calif., where water from the Klamath river flooded the highway.

about 7:25 a. m. More rain was forecast tonight and tomorrow as a new warm front moved in from the southwest.

The crest at Dodge bridge, which was closed because of a washout of the east approach, was 12.3 feet, or 3.3 above flood stage. The crest at Grants Pass was 29.7 feet, where flood stage is 17 feet.

State police and other officials reported several families marooned or evacuated. Officers this morning were attempting to rescue a man identified as Barney Governor, 58, who was marooned in his house about 50 yards upstream from the Gold Hill railroad bridge. Night-long attempts to rescue him continued today.

Car Trailer Washed Away Governor's car and trailer were washed away and he is believed to be in his attic. Sheriff's officers said the house is in danger of collapsing, but a slight drop in the river has improved the situation. A boat rescue was considered early today, but the river was too rough. State police said part of the house had been washed away.

SHOPPING DAYS LEFT
--- Help Fight TB ---
1955 CHRISTMAS GREETINGS 1955
--- Buy Christmas Seals ---

Weather
FORECAST: Lowering cloudiness with rain tonight and Friday morning. Partial clearing with showers Friday afternoon. Low tonight 40-45. High Friday 50. Temp. Highest Yesterday 57. Lowest this Morning 32. Prec. to 4:30 a.m. Today 3.02

Medford Stores Open Until 9 o'clock Tonight

Victor Flury, 40, Roseburg, was struck by a windblown tree in the Little River area east of Roseburg and killed. Coroner Jim Powers said sheriff's deputies