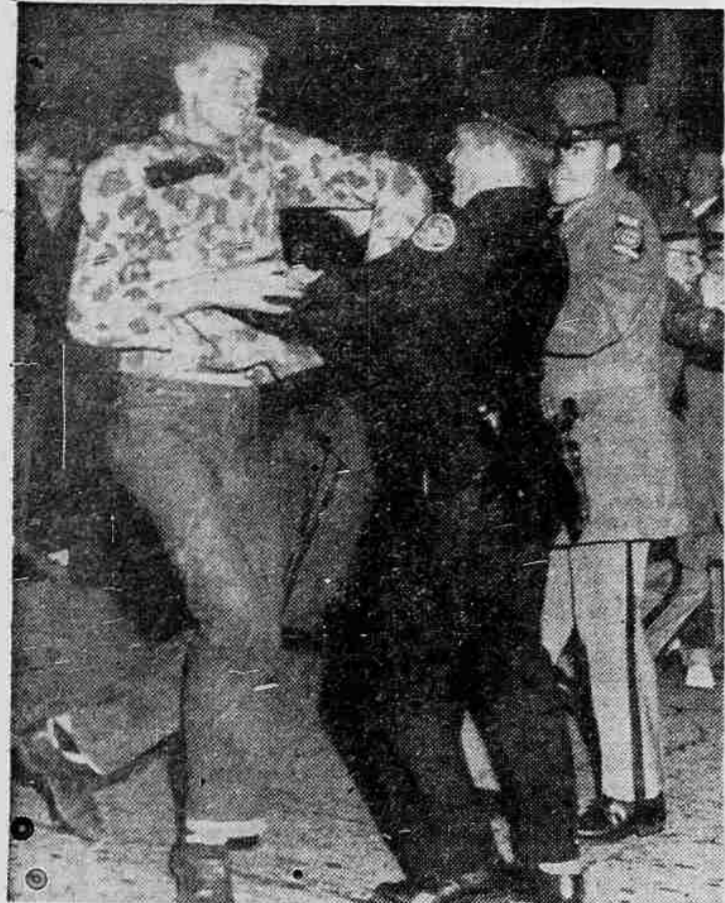




WAY DOWN SOUTH—Georgia Tech's coach Bobby Dodd (center) by virtue of coaching a football team that has won a Sugar Bowl bid in Atlanta, finds himself squarely in the center of the segregation issue. Georgia's Governor Marvin Griffin (left) exploded a bomb on Tech's Bowl plans by formally asking the State Board of Regents to forbid Tech to play Pittsburgh if Pitt uses a Negro player. The governor's statement followed demand by State's Rights group headed by Roy Harris (right) that such action be taken. Harris is also a member of the Board of Regents. Pitt has one Negro player, substitute fullback Bobby Grier.



BOWL BAN STARTS RIOT—An unidentified Georgia Tech student tangles with an Atlanta police officer as some 2000 students marched on the state capitol. The students were angered by Georgia Governor Marvin Griffin's efforts to keep Tech out of the Sugar Bowl game with Pittsburgh because Pitt has a Negro player. The demonstration turned into a riot as the students defied state troopers armed with tear gas and "hanged" several burning effigies of the governor.

Georgia Tech To Play In Bowl Tilt; Future Games in Jeopardy

Atlanta, Ga.—(U.P.)—The Board of Regents today gave Georgia Tech permission to play Pittsburgh and its Negro fullback in the Sugar Bowl Jan. 2 but threw future Tech and University of Georgia athletic schedules into jeopardy by banning their participation in non-segregated games played in Georgia.

The action, taken at a tense special session of the regents, apparently knocked out any hopes that Tech or Georgia would be able to schedule home and home games with some choice intersectional opponents past the present contracts.

The regents handed down their decision in a brief public session after its influential Education Commission had recommended the step after meeting behind closed doors for an hour. The vote was 10 to 1.

Gov. Marvin Griffin had asked the board to meet in special session to order Tech and Georgia teams not to participate in any athletic events in which a Negro played or in which the stands were non-segregated. Pitt plans to bring one Negro player to the Sugar Bowl game in New Orleans and will have non-segregated facilities in the stadium.

The related request by Griffin, a 48-year old champion of segregation, exploded into angry protests by Tech students who burned the governor in effigy at least six times, flooded into the state capitol early Saturday and then demonstrated in front of the governor's mansion.

Griffin's stand touched off a flood of protests from throughout the South and students at Mercer University in Macon, Ga., a Baptist supported school, also burned Griffin in effigy.

"There is no more difference in compromising integrity of race on the playing field than in doing so in the classrooms," Griffin wired Chairman Robert O. Arnold of the Board of Regents last Friday. "One break in the dike and the relentless seas will rush in and destroy us."

Should the regents agree on a compromise which would bar Georgia Tech and Georgia from playing against Negroes in the future the two schools could lose their attraction as national football powers.

In the last 15 years Tech and Georgia, which have played non-segregated opponents, appeared in 14 major bowl contests. Both schools presently are working on contracts with Northern schools which play Negroes.

One of Griffin's top legislative leaders, State Rep. John P. Drinkard, said he favors cutting off all state funds to Georgia Tech if its football team goes ahead with the Sugar Bowl game.

Eugene (U.P.)—Gov. Marvin Griffin of Georgia was hanged in effigy on the University of Oregon campus yesterday. A white suited dummy was found swinging from a tree near the Faculty Club. A sign read "Governor Griffin of Georgia." Another represented the Confederate flag.

Gov. Griffin has requested that George Tech be barred from playing against Pittsburgh's Negro fullback in the Sugar Bowl.

Survey For Feasibility of Dry Creek Dam Under Way By Reclamation Bureau

Field surveys by bureau of reclamation crews are now under way to determine the feasibility of constructing an irrigation dam across Dry creek in the Antelope valley.

The proposed dam site is about 4 1/2 miles north-northeast of Roxy Ann butte. It is contemplated the dam, if found to be feasible, would store up to 4,500 acre feet of water, and would also serve to equalize and regulate water supplies.

If it is built, it would become part of the water supply system of the Rogue River Valley Irrigation district, according to Harold Sexton, manager for the district.

Preliminary Studies Preliminary water supply studies indicate the reservoir could easily be filled during the storage season, even in the driest years, Sexton said. He added that the proposal would have important wildlife conservation benefits, as well as greatly improving water conservation capabilities.

If it proves feasible, it would make possible the irrigation of more lands in the district, and enable improved peak water deliveries in addition to non-peak demand irrigation.

Ted West, of the Salem office of the bureau, is in charge of the field work, under the direction of Lee McAllister of the Salem office. It is hoped to have the bureau's report completed by next fall. The report is expected to indicate what type of dam is best suited to the area.

Sexton said district officials are pleased by the speed with which the bureau has conducted preliminary phases of the study. He added that diamond drilling is scheduled later this month, and a test pit program is slated for early next year.

Green Springs—Chains required; 2 inches new snow; 3 inches total; snowing; plowing.

Highway 82 in Crater Lake National park—Chains required; 4 inches new snow; 56 inches total; snowing; Annie Spring to rim closed today; skiing fair to good in park.

Klamath Falls area—Carrying chains recommended; 3 inches new snow; 3 inches new snow; 5 inches total.

California—Chains required on Highway 99 between Mt. Shasta and Dunsmuir; and in areas north of Weed on Highway 97.

Highway 99, North—Raining to and including Portland; travel normal.

Higher altitudes—Chains required or advised.

Prospect—Carrying chains recommended; 2 inches new snow; 4 inches total; snowing.

Siskiyou—Carrying chains recommended; 2 inches new snow; 9 inches total; snowing steadily; plowing.

Green Springs—Chains required; 2 inches new snow; 3 inches total; snowing; plowing.

Highway 82 in Crater Lake National park—Chains required; 4 inches new snow; 56 inches total; snowing; Annie Spring to rim closed today; skiing fair to good in park.

Klamath Falls area—Carrying chains recommended; 3 inches new snow; 3 inches new snow; 5 inches total.

California—Chains required on Highway 99 between Mt. Shasta and Dunsmuir; and in areas north of Weed on Highway 97.

Highway 99, North—Raining to and including Portland; travel normal.

Higher altitudes—Chains required or advised.

Prospect—Carrying chains recommended; 2 inches new snow; 4 inches total; snowing.

Siskiyou—Carrying chains recommended; 2 inches new snow; 9 inches total; snowing steadily; plowing.

Green Springs—Chains required; 2 inches new snow; 3 inches total; snowing; plowing.

Highway 82 in Crater Lake National park—Chains required; 4 inches new snow; 56 inches total; snowing; Annie Spring to rim closed today; skiing fair to good in park.

Klamath Falls area—Carrying chains recommended; 3 inches new snow; 3 inches new snow; 5 inches total.

California—Chains required on Highway 99 between Mt. Shasta and Dunsmuir; and in areas north of Weed on Highway 97.

Highway 99, North—Raining to and including Portland; travel normal.

Higher altitudes—Chains required or advised.

Prospect—Carrying chains recommended; 2 inches new snow; 4 inches total; snowing.

Siskiyou—Carrying chains recommended; 2 inches new snow; 9 inches total; snowing steadily; plowing.

Green Springs—Chains required; 2 inches new snow; 3 inches total; snowing; plowing.

Highway 82 in Crater Lake National park—Chains required; 4 inches new snow; 56 inches total; snowing; Annie Spring to rim closed today; skiing fair to good in park.

Klamath Falls area—Carrying chains recommended; 3 inches new snow; 3 inches new snow; 5 inches total.

California—Chains required on Highway 99 between Mt. Shasta and Dunsmuir; and in areas north of Weed on Highway 97.

Highway 99, North—Raining to and including Portland; travel normal.

Higher altitudes—Chains required or advised.

Prospect—Carrying chains recommended; 2 inches new snow; 4 inches total; snowing.

Siskiyou—Carrying chains recommended; 2 inches new snow; 9 inches total; snowing steadily; plowing.

Green Springs—Chains required; 2 inches new snow; 3 inches total; snowing; plowing.

Highway 82 in Crater Lake National park—Chains required; 4 inches new snow; 56 inches total; snowing; Annie Spring to rim closed today; skiing fair to good in park.

Klamath Falls area—Carrying chains recommended; 3 inches new snow; 3 inches new snow; 5 inches total.

California—Chains required on Highway 99 between Mt. Shasta and Dunsmuir; and in areas north of Weed on Highway 97.

Highway 99, North—Raining to and including Portland; travel normal.

Higher altitudes—Chains required or advised.

Prospect—Carrying chains recommended; 2 inches new snow; 4 inches total; snowing.

Siskiyou—Carrying chains recommended; 2 inches new snow; 9 inches total; snowing steadily; plowing.

Green Springs—Chains required; 2 inches new snow; 3 inches total; snowing; plowing.

Highway 82 in Crater Lake National park—Chains required; 4 inches new snow; 56 inches total; snowing; Annie Spring to rim closed today; skiing fair to good in park.

Klamath Falls area—Carrying chains recommended; 3 inches new snow; 3 inches new snow; 5 inches total.

California—Chains required on Highway 99 between Mt. Shasta and Dunsmuir; and in areas north of Weed on Highway 97.

Highway 99, North—Raining to and including Portland; travel normal.

Higher altitudes—Chains required or advised.

Prospect—Carrying chains recommended; 2 inches new snow; 4 inches total; snowing.

Siskiyou—Carrying chains recommended; 2 inches new snow; 9 inches total; snowing steadily; plowing.

Green Springs—Chains required; 2 inches new snow; 3 inches total; snowing; plowing.

Highway 82 in Crater Lake National park—Chains required; 4 inches new snow; 56 inches total; snowing; Annie Spring to rim closed today; skiing fair to good in park.

Klamath Falls area—Carrying chains recommended; 3 inches new snow; 3 inches new snow; 5 inches total.

California—Chains required on Highway 99 between Mt. Shasta and Dunsmuir; and in areas north of Weed on Highway 97.

Highway 99, North—Raining to and including Portland; travel normal.

Higher altitudes—Chains required or advised.

Prospect—Carrying chains recommended; 2 inches new snow; 4 inches total; snowing.

Siskiyou—Carrying chains recommended; 2 inches new snow; 9 inches total; snowing steadily; plowing.

Green Springs—Chains required; 2 inches new snow; 3 inches total; snowing; plowing.

Highway 82 in Crater Lake National park—Chains required; 4 inches new snow; 56 inches total; snowing; Annie Spring to rim closed today; skiing fair to good in park.

Klamath Falls area—Carrying chains recommended; 3 inches new snow; 3 inches new snow; 5 inches total.

California—Chains required on Highway 99 between Mt. Shasta and Dunsmuir; and in areas north of Weed on Highway 97.

Highway 99, North—Raining to and including Portland; travel normal.

Higher altitudes—Chains required or advised.

Prospect—Carrying chains recommended; 2 inches new snow; 4 inches total; snowing.

Siskiyou—Carrying chains recommended; 2 inches new snow; 9 inches total; snowing steadily; plowing.

Green Springs—Chains required; 2 inches new snow; 3 inches total; snowing; plowing.

Highway 82 in Crater Lake National park—Chains required; 4 inches new snow; 56 inches total; snowing; Annie Spring to rim closed today; skiing fair to good in park.

Klamath Falls area—Carrying chains recommended; 3 inches new snow; 3 inches new snow; 5 inches total.

California—Chains required on Highway 99 between Mt. Shasta and Dunsmuir; and in areas north of Weed on Highway 97.

Highway 99, North—Raining to and including Portland; travel normal.

Higher altitudes—Chains required or advised.

Prospect—Carrying chains recommended; 2 inches new snow; 4 inches total; snowing.

Siskiyou—Carrying chains recommended; 2 inches new snow; 9 inches total; snowing steadily; plowing.

Green Springs—Chains required; 2 inches new snow; 3 inches total; snowing; plowing.

Highway 82 in Crater Lake National park—Chains required; 4 inches new snow; 56 inches total; snowing; Annie Spring to rim closed today; skiing fair to good in park.

Klamath Falls area—Carrying chains recommended; 3 inches new snow; 3 inches new snow; 5 inches total.

California—Chains required on Highway 99 between Mt. Shasta and Dunsmuir; and in areas north of Weed on Highway 97.

Highway 99, North—Raining to and including Portland; travel normal.

Higher altitudes—Chains required or advised.

Prospect—Carrying chains recommended; 2 inches new snow; 4 inches total; snowing.

Siskiyou—Carrying chains recommended; 2 inches new snow; 9 inches total; snowing steadily; plowing.

Green Springs—Chains required; 2 inches new snow; 3 inches total; snowing; plowing.

Highway 82 in Crater Lake National park—Chains required; 4 inches new snow; 56 inches total; snowing; Annie Spring to rim closed today; skiing fair to good in park.

Klamath Falls area—Carrying chains recommended; 3 inches new snow; 3 inches new snow; 5 inches total.

California—Chains required on Highway 99 between Mt. Shasta and Dunsmuir; and in areas north of Weed on Highway 97.

Highway 99, North—Raining to and including Portland; travel normal.

Higher altitudes—Chains required or advised.

Prospect—Carrying chains recommended; 2 inches new snow; 4 inches total; snowing.

Siskiyou—Carrying chains recommended; 2 inches new snow; 9 inches total; snowing steadily; plowing.

Green Springs—Chains required; 2 inches new snow; 3 inches total; snowing; plowing.

Highway 82 in Crater Lake National park—Chains required; 4 inches new snow; 56 inches total; snowing; Annie Spring to rim closed today; skiing fair to good in park.

Klamath Falls area—Carrying chains recommended; 3 inches new snow; 3 inches new snow; 5 inches total.

California—Chains required on Highway 99 between Mt. Shasta and Dunsmuir; and in areas north of Weed on Highway 97.

Highway 99, North—Raining to and including Portland; travel normal.

Higher altitudes—Chains required or advised.

Prospect—Carrying chains recommended; 2 inches new snow; 4 inches total; snowing.

Siskiyou—Carrying chains recommended; 2 inches new snow; 9 inches total; snowing steadily; plowing.

Green Springs—Chains required; 2 inches new snow; 3 inches total; snowing; plowing.

Highway 82 in Crater Lake National park—Chains required; 4 inches new snow; 56 inches total; snowing; Annie Spring to rim closed today; skiing fair to good in park.

Klamath Falls area—Carrying chains recommended; 3 inches new snow; 3 inches new snow; 5 inches total.

California—Chains required on Highway 99 between Mt. Shasta and Dunsmuir; and in areas north of Weed on Highway 97.

Highway 99, North—Raining to and including Portland; travel normal.

Higher altitudes—Chains required or advised.

Prospect—Carrying chains recommended; 2 inches new snow; 4 inches total; snowing.

Siskiyou—Carrying chains recommended; 2 inches new snow; 9 inches total; snowing steadily; plowing.

Green Springs—Chains required; 2 inches new snow; 3 inches total; snowing; plowing.

Highway 82 in Crater Lake National park—Chains required; 4 inches new snow; 56 inches total; snowing; Annie Spring to rim closed today; skiing fair to good in park.

Klamath Falls area—Carrying chains recommended; 3 inches new snow; 3 inches new snow; 5 inches total.

California—Chains required on Highway 99 between Mt. Shasta and Dunsmuir; and in areas north of Weed on Highway 97.

Highway 99, North—Raining to and including Portland; travel normal.

Higher altitudes—Chains required or advised.

Prospect—Carrying chains recommended; 2 inches new snow; 4 inches total; snowing.

Siskiyou—Carrying chains recommended; 2 inches new snow; 9 inches total; snowing steadily; plowing.

Green Springs—Chains required; 2 inches new snow; 3 inches total; snowing; plowing.

Highway 82 in Crater Lake National park—Chains required; 4 inches new snow; 56 inches total; snowing; Annie Spring to rim closed today; skiing fair to good in park.

Klamath Falls area—Carrying chains recommended; 3 inches new snow; 3 inches new snow; 5 inches total.

California—Chains required on Highway 99 between Mt. Shasta and Dunsmuir; and in areas north of Weed on Highway 97.

Highway 99, North—Raining to and including Portland; travel normal.

Higher altitudes—Chains required or advised.

Prospect—Carrying chains recommended; 2 inches new snow; 4 inches total; snowing.

Siskiyou—Carrying chains recommended; 2 inches new snow; 9 inches total; snowing steadily; plowing.

Green Springs—Chains required; 2 inches new snow; 3 inches total; snowing; plowing.

Highway 82 in Crater Lake National park—Chains required; 4 inches new snow; 56 inches total; snowing; Annie Spring to rim closed today; skiing fair to good in park.

Klamath Falls area—Carrying chains recommended; 3 inches new snow; 3 inches new snow; 5 inches total.

California—Chains required on Highway 99 between Mt. Shasta and Dunsmuir; and in areas north of Weed on Highway 97.

Highway 99, North—Raining to and including Portland; travel normal.

Higher altitudes—Chains required or advised.

Prospect—Carrying chains recommended; 2 inches new snow; 4 inches total; snowing.

Siskiyou—Carrying chains recommended; 2 inches new snow; 9 inches total; snowing steadily; plowing.

Green Springs—Chains required; 2 inches new snow; 3 inches total; snowing; plowing.

Highway 82 in Crater Lake National park—Chains required; 4 inches new snow; 56 inches total; snowing; Annie Spring to rim closed today; skiing fair to good in park.

Klamath Falls area—Carrying chains recommended; 3 inches new snow; 3 inches new snow; 5 inches total.

California—Chains required on Highway 99 between Mt. Shasta and Dunsmuir; and in areas north of Weed on Highway 97.

Highway 99, North—Raining to and including Portland; travel normal.

Higher altitudes—Chains required or advised.

Prospect—Carrying chains recommended; 2 inches new snow; 4 inches total; snowing.

Siskiyou—Carrying chains recommended; 2 inches new snow; 9 inches total; snowing steadily; plowing.

Green Springs—Chains required; 2 inches new snow; 3 inches total; snowing; plowing.

Highway 82 in Crater Lake National park—Chains required; 4 inches new snow; 56 inches total; snowing; Annie Spring to rim closed today; skiing fair to good in park.

Klamath Falls area—Carrying chains recommended; 3 inches new snow; 3 inches new snow; 5 inches total.

California—Chains required on Highway 99 between Mt. Shasta and Dunsmuir; and in areas north of Weed on Highway 97.

Highway 99, North—Raining to and including Portland; travel normal.

Higher altitudes—Chains required or advised.

Prospect—Carrying chains recommended; 2 inches new snow; 4 inches total; snowing.

Siskiyou—Carrying chains recommended; 2 inches new snow; 9 inches total; snowing steadily; plowing.

Green Springs—Chains required; 2 inches new snow; 3 inches total; snowing; plowing.

Highway 82 in Crater Lake National park—Chains required; 4 inches new snow; 56 inches total; snowing; Annie Spring to rim closed today; skiing fair to good in park.

Klamath Falls area—Carrying chains recommended; 3 inches new snow; 3 inches new snow; 5 inches total.

California—Chains required on Highway 99 between Mt. Shasta and Dunsmuir; and in areas north of Weed on Highway 97.

Highway 99, North—Raining to and including Portland; travel normal.

Higher altitudes—Chains required or advised.

Prospect—Carrying chains recommended; 2 inches new snow; 4 inches total; snowing.

Siskiyou—Carrying chains recommended; 2 inches new snow; 9 inches total; snowing steadily; plowing.

Green Springs—Chains required; 2 inches new snow; 3 inches total; snowing; plowing.

Highway 82 in Crater Lake National park—Chains required; 4 inches new snow; 56 inches total; snowing; Annie Spring to rim closed today; skiing fair to good in park.

Klamath Falls area—Carrying chains recommended; 3 inches new snow; 3 inches new snow; 5 inches total.

California—Chains required on Highway 99 between Mt. Shasta and Dunsmuir; and in areas north of Weed on Highway 97.

Highway 99, North—Raining to and including Portland; travel normal.

Higher altitudes—Chains required or advised.

Prospect—Carrying chains recommended; 2 inches new snow; 4 inches total; snowing.

Siskiyou—Carrying chains recommended; 2 inches new snow; 9 inches total; snowing steadily; plowing.

Green Springs—Chains required; 2 inches new snow; 3 inches total; snowing; plowing.

Highway 82 in Crater Lake National park—Chains required; 4 inches new snow; 56 inches total; snowing; Annie Spring to rim closed today; skiing fair to good in park.

Klamath Falls area—Carrying chains recommended; 3 inches new snow; 3 inches new snow; 5 inches total.

California—Chains required on Highway 99 between Mt. Shasta and Dunsmuir; and in areas north of Weed on Highway 97.

Highway 99, North—Raining to and including Portland; travel normal.

Higher altitudes—Chains required or advised.

Prospect—Carrying chains recommended; 2 inches new snow; 4 inches total; snowing.

Siskiyou—Carrying chains recommended; 2 inches new snow; 9 inches total; snowing steadily; plowing.

Green Springs—Chains required; 2 inches new snow; 3 inches total; snowing; plowing.

Highway 82 in Crater Lake National park—Chains required; 4 inches new snow; 56 inches total; snowing; Annie Spring to rim closed today; skiing fair to good in park.

Klamath Falls area—Carrying chains recommended; 3 inches new snow; 3 inches new snow; 5 inches total.

California—Chains required on Highway 99 between Mt. Shasta and Dunsmuir; and in areas north of Weed on Highway 97.

Highway 99, North—Raining to and including Portland; travel normal.