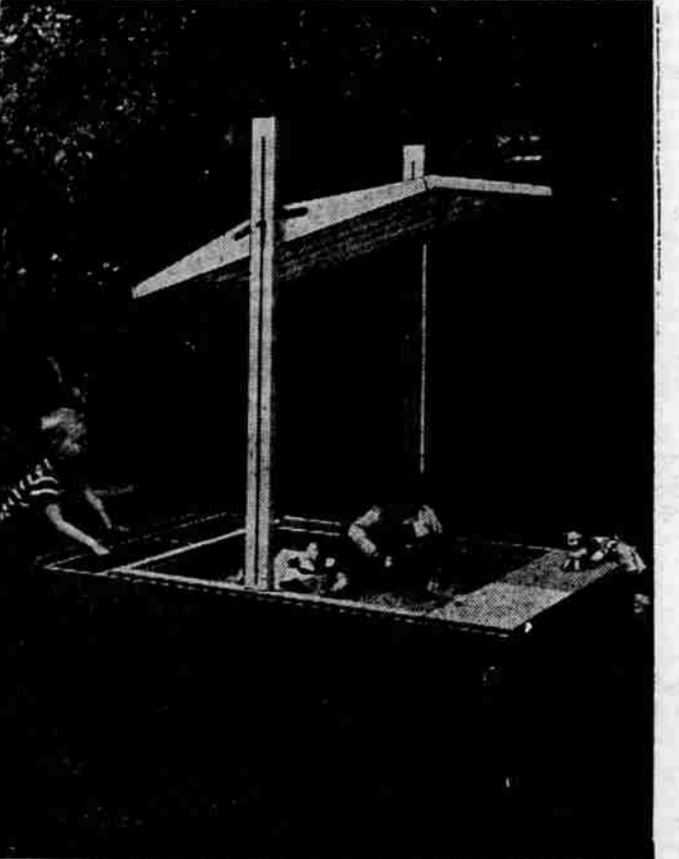




CHILD'S DESK of fir plywood is scaled to junior proportions, contains generous storage space for the juvenile artist.



TOY STORAGE SAND BOX of fir plywood has handy compartments for playthings, seals tightly down at night.

Fascinating Toys Possible From Easy-to-Work Plywood

Fascinating new children's toys each containing hours of playtime enjoyment, are easily within your reach if you build them yourself. And building them can be a simple enjoyable pastime when you use big, easy-to-handle panels of fir plywood.

Some of these toys are available only if you make them yourself. No manufacturers are producing all of them. Several, however, are being made by west coast companies.

Plans are available free from the Douglas Fir Plywood Association at Tacoma 2, Wash. DFPA is the quality maintenance and

control organization of the western plywood industry. These are the toys for which DFPA can supply the plans:

Play Planks, Child's Drawing Desk, Giant Building Toy, Child's TV Snack Table, Toy Traller, Child's Table and Chair Set, Modern Doll House, Space Raiders' Club House, Space Guns, Plywood Playhouse (outdoor), Toy Storage Sand Box.

Names of most of the above plans give you an idea of what each toy is. Several of them, however, are so new and intriguing that an explanation is in order.

The Play Plans are notched construction pieces with which children may build walk-in size projects without nails. Three standard panels of fir plywood form the entire set. This is one of the simplest home craftsman projects on the list. Cutting it out will take part of one day on a week-end. A small version of this toy is made by Hogan-Sparber Products Co., Oakland, Calif., under the name "Junior Contractor Set."

The Giant Building Toy involves seven basic pieces cut from one panel of fir plywood. The seven pieces are notched triangles, providing parts for an almost inexhaustible supply of backyard "kid-struction" projects. In this respect, it is similar to the Play Planks. However, the pieces are of a radically different shape and are assembled with birch dowels. The set is being manufactured under patent by Martin Metal & Associates, Sausalito, Calif., and the Muir Co., Mill Valley, Calif.

The Space Raiders' Club House is what the name suggests: an outdoor play structure shaped like a rocket ship, designed for easy construction with four panels of fir plywood.

Each of the projects has been amateur-tested for building simplicity, durability and appearance. The furniture is scaled for short legs, and some will grow with your children.

A postcard to the plywood association will get you the plan you want.

Douglas fir plywood has had many nicknames in its long and colorful career. Some have called it "the carpenter's friend"; others have named it engineered wood, America's busiest building material, and the jack-of-all-trades of the building industry. This year in the Golden Jubilee year a new nickname has been added. It is "the 20th century wood miracle."

First commercial use of fir plywood, now an all-purpose building material, was in 1905 for door panels.



THESE FAST RUNABOUTS of commercial construction are planked with fir plywood tested by long experience. Result: hulls requiring minimum upkeep and maintaining sound usefulness over a long period.

Tips Given on Building Boats from Plywood

If you are going to build a plywood boat, here's some valuable information assembled from laboratory test and experience data collected by the Douglas Fir Plywood Association.

Construction of a plywood boat requires attention to a few details that may or may not be required in conventional construction. Such attention will be more than paid off in trouble-free operation.

The average plywood boat has only four seams to a side, and if they are well laid up in glue or composition when the boat is built, they may very nearly be forgotten. This is doubly important if the boat is to be taken into and out of the water frequently. The plywood planking won't shrink and swell, alternately leaking and pressing out the caulking. A board-planked boat is expected to leak for the first few days until the planks swell against the caulking, and caulked seams of cotton and compound cost an owner a tidy sum during the lifetime of a board-planked boat.

Probably the most important must in building a boat with plywood is to cover the panel

edges. If any deterioration occurs, it is along the edges where the alternate layers of veneer and waterproof glue are exposed. Even when buried in other members, these edges should be sealed to prevent the entrance of moisture.

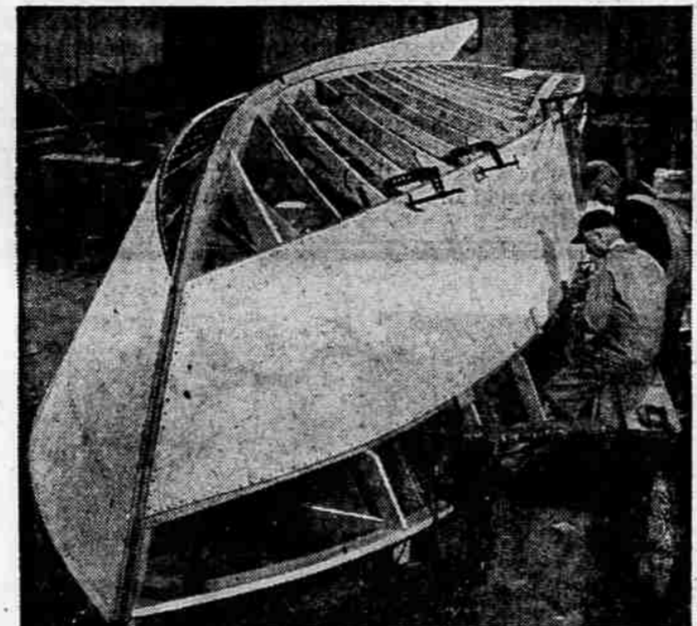
Provided a boat is not to be subjected to unusual stresses, one-quarter-inch plywood may be used for planking on craft up to 16-feet in length. The three-eighths inch thickness is recommended for boats out of the pram class. However, larger boats call for thicknesses up to one-half inch, often gained with two layers of quarter-inch glued along the entire facing surface.

For an outboard boat, plywood is the transom material. The constant hammering of an outboard motor will cause a transom of glue-doweled, or otherwise jointed boards, to work at the joints. This is not true of plywood. Pound for pound, the material is actually stronger than steel. The glue bond is tested to be stronger than the wood fibers. A plywood transom, properly seated and with sufficient knees and good corner bracing, should give no trouble for the

lifetime of the boat. The strength that fir plywood can impart with reasonable cost, makes it the recommended material for planking and "work-horse" areas. However, more costly specialty plywoods are often used for "show" in some places. Many of these more expensive surfaces are bonded on fir plywood cores and have generally the same weight and strength characteristics.

Two facts about fir plywood should be kept in mind when it comes to finishing the material on a boat: Unless properly sanded during finishing, the wavy grain characteristic produced when the veneering knife sliced through the annular rings of the log, may show right through the finish as surface ripples; second, on long exposure to weather, plywood has a tendency to develop many small splits or checks on the surface. These do not reduce panel strength, but they muss up the appearance unless steps are taken to nullify these conditions.

Apply the primer coat preferably when the panel is cut to size or immediately after fabrication. Don't paint the surfaces which are to be glued. Laboratory test data on painting fir plywood boats may be obtained from the Douglas Fir Plywood Association, Tacoma 2, Wash.



IN BOTH AMATEUR and commercial construction fir plywood planking goes on all types of pleasure craft because of its many basic advantages. Here is the construction of an 18-foot cruiser. The fir plywood eliminates hundreds of feet of seams, reduces maintenance to a minimum and insures high-strength, lightweight hull for your boat.

Development of Materials Major Task for Industry

Development of new materials to ease the builder's work, produce longer lasting structures and expand the ways to use standard fir plywood is a major task in laboratories of the Douglas Fir Plywood Association.

The DFPA effort is part of west coast plywood manufacturers' continuing aim at maintaining industry growth—producing more jobs by opening new markets.

Here are some examples to show how well this research is paying off for the benefit of the West's economy:

Research by DFPA structural engineers in the association's two laboratories—at Tacoma, Wash., and Eugene, Ore.—developed the method of using fir plywood for roof decking in large buildings such as warehouses, schools, theaters, markets, and other industrial structures. Designers now specify fir plywood for these structures in many instances where extra rigidity and strength are needed to withstand earthquakes and hurricanes.

The DFPA research proved that plywood, nailed according to a schedule devised in the laboratories and in actual construction tests, is a highly economical method of achieving superior lateral strength on large, flat, plane-like roofs.

The Federal Housing Authority bases many of its structural requirements on industry research. Studies proving plywood's strength paved the way to FHA approval of thin plywood construction over wide rafter spacing. This created major structural economies in home building at no sacrifice in strength.

Research of this type pays off in sales. In only one instance, DEPA laboratory data saved \$2,800 in construction costs of a Washington school. Architects

used this data as a basis for specifying a plywood roof deck over widely spaced supports.

Using similar research data, a Seattle builder pioneered a system of fir plywood floor construction which saved \$500 on a \$15,000 house. Other home builders have reported savings up to 50 per cent in wall and roof construction where they used fir plywood according to data developed by DFPA research laboratories.

Odd Fellows OK Sale of Building

Corvallis—(U.P.)—Members of the Odd Fellows lodge here have announced approval of the sale of their building in downtown Corvallis for \$107,200.

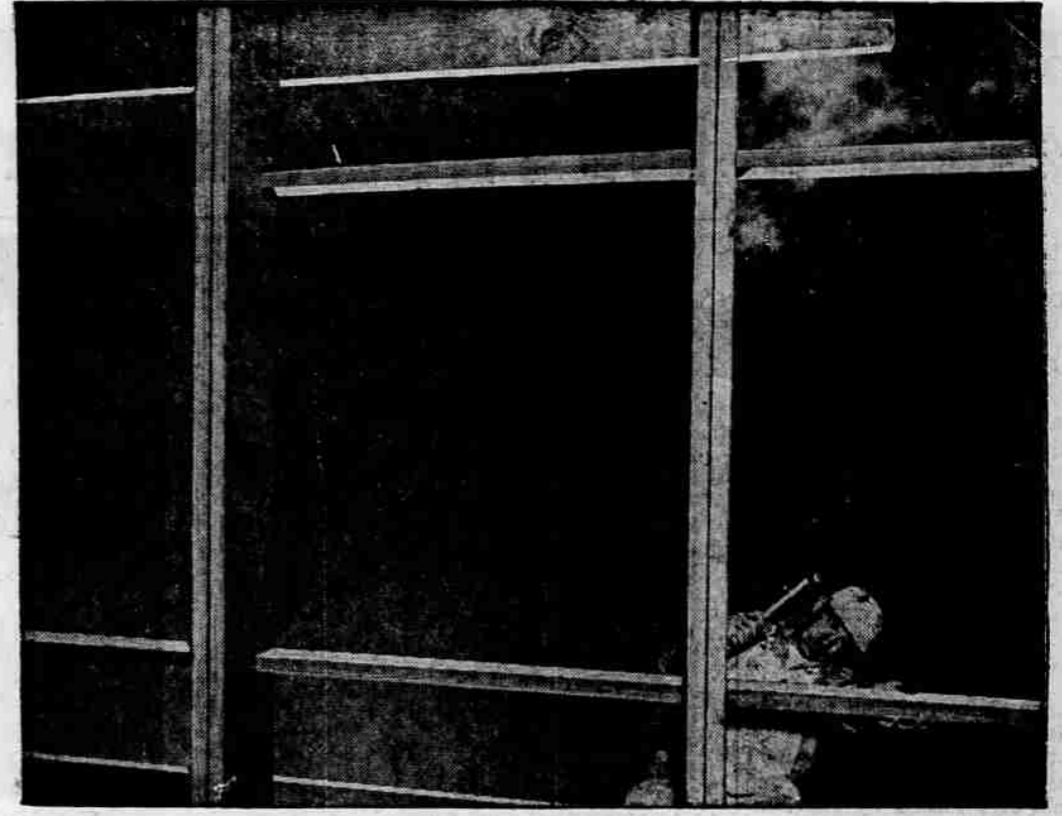
The frame building once was a church and is on a 100-by-100 foot lot across from the former city hall that recently was sold to a department store.

While actual purchase has not been announced, it was reported the J. C. Penney Company is considering leasing the building that will be built on the property.

Whooping Crane Family Arrives in Southland

Rockport, Tex.—(U.P.)—The first family of the nearly extinct Whooping cranes has arrived at the Arkansas National Wildlife Refuge near Rockport, Manager Julian Howard reported yesterday. The rare birds, parents and one young showed up yesterday. The birds, which total only 21, spend the summer in Canada and return to Texas for the winter.

The mummy cases of many of the Egyptian kings were made of plywood.



DRAMATIC EMPHASIS on wide supports for new flooring system with thick fir plywood subflooring is given by this low-angle photograph. Picture taken at Thorpe Bros. Construction Co. operation, Billings, Mont., where a subdivider is using this method.

Sheathing Saving Building Costs in Homes Using Plan

Something new in a cost-saving technique is gaining acceptance in the construction field, thanks to laboratory tests by the Douglas Fir Plywood Association and recent field experiences of builders.

The new technique of plywood over supports 4-feet on centers on both floors and roofs. At least one builder using such a system on subfloors reports total savings resulting from the new technique at \$500 on a \$15,000 house. In one new school building the system has saved \$2,700. Comparable savings have been and multi-unit residential construction.

DFPA laboratories have completed extensive tests to provide the structural data for acceptance of this system by both Building Codes and FHA authorities.

Conventional plywood floor and roof sheathing normally ranges up to 3/4-inch thick on supports up to 24-inch o.c. The thicker panels in the new system permit a reduction in dimensional lumber and offer time—labor—cost and construction advantages which lead to several contingent savings. Beam spacing of 4-feet is probably the most practical for the system because it conforms with accepted building modules and is most adaptable to the standard 8-foot fir plywood panels.

DFPA test data shows that one-inch fir plywood is entirely adequate as a subfloor over supports spaced 4-feet on centers. Such a floor readily takes loads of 75 to 90 pounds per square foot with minimal deflection, and a more than ample safety factor.

PAINT WITH Treasure Tones
BURGESS PAINT & WALLPAPER STORE
 Corner 6th & Holly, Diagonally Across from the Post Office
 We Give S&H Green Stamps
 PHONE 2-9321
 "Let Us Recommend a Reliable Painter"

Jorgensen's EXTEND Congratulations TO THE FIR PLYWOOD INDUSTRY on their 50 YEARS of PROGRESS!



Today we salute the fir plywood industry which this year is commemorating its 50th anniversary. Since its beginning the industry has grown from nothing to a \$370,000,000 per year giant . . . and is still growing.

Fir plywood produced only on the West Coast is sold everywhere. It is used to build millions of useful things, and new uses are being discovered constantly.

We are fully aware of the importance of fir plywood to the Jackson's County's economy, and we will continue to lend our support to the industry and to its efforts on behalf of fir plywood's increasing popularity and usefulness.

JORGENSEN'S DAIRY PRODUCTS Another Important Jackson County Industry



JORGENSEN'S DAIRY PRODUCTS mean quality, purity, dependability, reliability and economy . . . JORGENSEN'S DAIRY PRODUCTS mean health for all the family . . . more vigor, stamina, and all-round physical and mental fitness . . . JORGENSEN'S DAIRY PRODUCTS mean economy . . . the biggest bargain on your grocery list . . . but above all, Jorgensen's dairy products mean deep, delicious goodness . . . pure goodness. These fine products come from the expanding dairy herds of the Rogue River Valley, and dairying is an important factor in the growing economy of Jackson County!

For the FINEST, Always Ask for "JORGENSEN'S"

IT'S ALIVE WITH POWER!

NEW HOMELITE MODEL 5-20 5 HP 20 LB CHAIN SAW

Gives you . . .

- Most power per pound of any chain saw . . . cuts faster . . . handles easier
- High compression, short stroke precision built engine for dependable service and low maintenance
- More attachments for cleaning out brush, clearing land, or doing many cutting chores

ASK FOR A FREE DEMONSTRATION TODAY

M. & W. CHAIN SAW CO.

3320 N. Hwy. 99—Ph. 3-2591
 Across from Elk Lumber Co.