

New 'Living Lather' Shampoo Preens and Polishes Every Strand of Your Hair!



Shrilling new use of a silver smock high over a pretty ear.
Living Lather Plus
 Hard Water Shampoo
 \$1.25 Value For Only \$1.00 (PLUS 2¢ Fed. Tax)
 Activated by patent-processed LAMOLIN PLUS Liquid, miraculous "living lather" is ultra-effective, non-drying! Beauty-conditions while it shampoos, through furnishing vital sterols hair requires. Thus, LAMOLIN PLUS Hard Water Shampoo means "Dream Hair" . . . lovelier, livelier, softer, springier, more silken-sheened! And so obedient, you style it right away! Also, limited offer, from vanity-size LAMOLIN PLUS For The Hair—exclusive, daily hair-glamour dressing that works in seconds! \$1 plus 2¢ federal tax for both.

Sorority Holds Luncheon Session In Ashland Club

The October meeting of Delta Kappa Gamma was a no-host luncheon with the oldest and youngest chapters in Oregon meeting with Epsilon chapter at the Ashland Elks club, October 15.

Alpha chapter in Klamath Falls was represented by two members, Mrs. Augusta Dunbar and Mrs. Margarite Parker.

Oregon's newest chapter, Omega in Grants Pass, was represented by Miss Princess Egbert, president; Mrs. Jennie Calhoun, state treasurer; Miss Alma Freichs, Miss Fern Trull and Miss Bertha Calhoun.

Epsilon had two visitors, Miss La Moille Pugh, Eta chapter Long Beach, Calif., who is now teaching in the Robertson School of Business, and Mrs. Erma White, Alpha chapter, Roswell, N. M., now teaching music and art in Jackson school in Medford.

Huot Fisher, band director at Ashland accompanied by Mrs. Fisher, music teacher at Southern Oregon college, played selections on the clarinet.

Miss Dorothy Wilson, Spanish teacher at Medford Senior High school, showed slides and described her recent trip to Europe. The countries she described were those of northern Europe, Denmark and Norway, and Spain and Portugal in southern Europe.

The tables were decorated with leaves and flowers in the theme of fall. The committee in charge of decorations and arrangements was Miss Vida Scripser, Miss Flora Stokoe; Mrs. Ione Taylor, Mrs. Maye Wells, and Mrs. Betty Powell.

Society

New Club Meets In Eagle Point

Eagle Point—Eagle Point High School Parent-Teacher-Student association opened its first regular meeting Wednesday, October 12 with an introduction of the school faculty and the elected members of the student body.

The proposed budget adopted and the curtain-blind project was started with many volunteers.

Those honored at a reception following the business meeting were the high school faculty and the student representatives. The new representatives are: Miss Suzanne Palm and Fred Hay, freshman class; Miss Diana Gardener and John Root, sophomore class; Miss Sandra Sawyers and Larry Waite, junior class and Miss Corinna Rodgers and Adrian Elrod, senior class.

Washington PTA To Hold Meeting

The first meeting of Washington Parent-Teacher association will be Friday, October 21, at 2:15 p.m. in the school gymnasium. The meeting will be presided over by the new president, Mrs. Ray Alder.

Members of the executive board will be introduced, and there will also be introduction of the teachers by Robert Sage, school principal.

A talk on "Safety" will be given by John W. Childers, safety chairman for the Medford Council of Parent-Teacher associations.

Refreshments will be served by the mothers of the first grade pupils.

Margaret: The Romance of a Princess

This is the last in a series of articles about Princess Margaret by Margaret Saville who has covered the royal family of Britain for more than 20 years. She has written 22 books about them since the reign of George V. She covered the birth of Princess Margaret, the abdication of Edward VIII, the wedding of Queen Elizabeth and her coronation.

By MARGARET SAVILLE United Press Correspondent

London — (U.P.) — Princess Margaret was nine, a little girl playing with dolls on the afternoon in 1940 when Peter Townsend led his fighter squadron against 250 German aircraft over the Thames estuary.

Townsend shot down three enemy planes in that one clash.

Only a few weeks before, Townsend himself had been wounded in the foot and shot down. He parachuted from his Spitfire just in time, was rushed to a hospital where doctors amputated his left big toe. Within two weeks he was in the air again.

Townsend was one of those about whom Winston Churchill said "Never has so much been owed by so many to so few."

And so it was that seldom has even a storybook princess had such a knight in shining armor come along as Margaret did when her war hero Townsend was picked by the late George VI as an equerry to the royal family at Buckingham Palace.

By that time Margaret was 13, Townsend 29.

Townsend had married in 1941. The king moved him and his wife, Rosemary, into Adelaide Cottage, a grace and favor residence near Windsor Castle. The king was godfather to the couple's second son.

Townsend became very popu-

lar at the palace. He sampled movies and plays in advance of royal attendance, arranged details of royal appearances, played canasta with the queen and entertained the king's daughters—Elizabeth and Margaret.

Aide to princess

In 1947 he went to South Africa as an aide to Princess Margaret and in 1948 the king chose him to be the 17-year-old Margaret's equerry on his first solo visit aboard — to Holland for Queen Juliana's coronation.

Townsend was a special favorite with the queen mother and the princess. In 1949 Margaret asked him to fly her blue and gold Miles Whitney straight racing plane in the King's cup air races. He was an also ran but the next year he tried again and finished second.

But Townsend's duties, which made him the target of every West End society hostess, cost him many hours of overtime work and cut deeply into his home life.

The breakup of his marriage came six years after he went to the palace. And it was just before Christmas of 1942 that a court granted him a divorce decree on grounds of his wife's adultery with export merchant John Adolphus de Laszlo, son of the late portrait painter, Philip de Laszlo.

Townsend was awarded custody of their two sons. His former wife married de Laszlo in February, 1953.

King George had died the year of the divorce and it was then that Margaret drew very close to Townsend.

He was a far different cut of

man than any of the young noblemen and wealthy commoners with whom she had partied and danced.

Eastern Background

Townsend was born in Rangoon, Burma, the third child of an officer in the Indian Civil service. His childhood was spent in Burma and Assam, explaining his love of Eastern color, warmth and exotic foods.

He was educated at Hallebury in England, Clement Attlee's old school. One sister married Arthur Gaitskell, brother of former Socialist Chancellor of the exchequer Hugh Gaitskell.

Townsend was a shy youth until he joined the RAF in 1935. He lost that shyness in the buccaneering fighter pilot days of the war. Townsend and his special pal, a South African named Caesar Hull, who was later killed, originated a weird victory dance in the mess hall called "La Cachita." They threw each other over the chairs and tables in a wild Apache whirl.

The wavy-haired, handsome Townsend became very popular with his comrades. One fellow pilot wrote of him in a letter: "The squadron worships him. He is a hero to the ground crews. He has no idea of his own courage."

Man of Action
 When Townsend came to serve the royal family he was like a breath of fresh air from the outside world for Margaret. He was mature, confident, experienced, a man of action.

He shared her budding tastes for books, drama, music, painting and a keen interest in current affairs. He had wit and a sense of humor to match Margaret's.

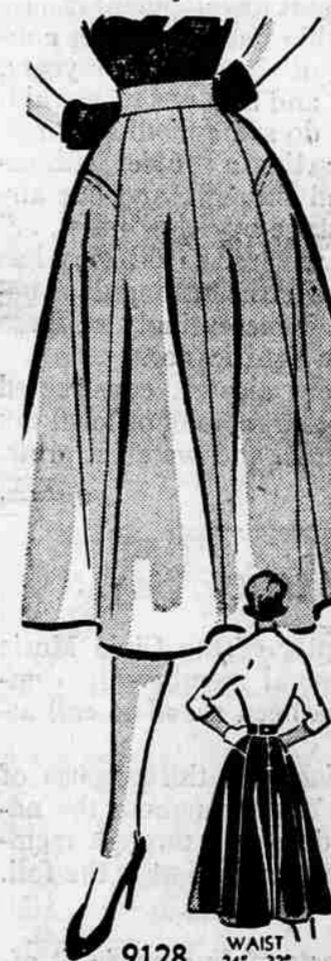
Margaret was not in the limelight in those years. It was her sister, Elizabeth, who was involved in a romance with the handsome Phillip, now Duke of Edinburgh.

There are many who believe that Margaret was determined to find herself a man as bold and dashing as the husband that Elizabeth took. And Townsend, although a commoner, measured up very well.

There are few who doubt they were in love when Townsend was suddenly "exiled" to Brussels as air attache shortly after Elizabeth's coronation.

But the strong-willed Margaret decided he was a man worth waiting for.

Basic Beauty



9128 WAIST 24"-32" by Marian Martin

Basic fashion for a winter separates wardrobe! The beautiful flare skirt that teams so well with all your blouses, sweaters, glamorous evening tops. This new style—as easy to sew as it is flattering to wear! Perfect for bengaline, soft woolsens, velveteen!

Pattern 9128: Misses' Waist Sizes 24, 25, 26, 28, 30, 32 inches. Size 28 takes 2 3/4 yards 39-inch.

This easy-to-use pattern gives perfect fit. Complete, illustrated Sew Chart shows you every step. Send THIRTY-FIVE CENTS in coins for this pattern—add 5 cents for each pattern for 1st-class mailing. Send to Marian Martin, care of Medford Mail Tribune, Pattern Dept., 232 West 18th St., New York 11, N. Y. Print plainly NAME, ADDRESS with SIZE and STYLE NUMBER.



Relieve Suffering Fast-Effectively with VICKS VAPORUB

Montgomery Ward
 117 S. CENTRAL PHONE 2-6241
TONIGHT
 5 to 9 Specials

WEDNESDAY NIGHT SPECIAL
 Reg. 10.98
CHENILLE BED SPREAD
 SPECIAL PRICE **7.77** TONIGHT ONLY
 POPULAR WEDDING RING DESIGN. FULL OR TWIN. SNOWY-WHITE COTTON CHENILLE, RICHLY COLORED BACKGROUND
 BLANKET DEPT. — MAIN FLOOR

WEDNESDAY NIGHT SPECIAL
 Reg. 2.98
MEN'S DRESS SHIRTS
 SPECIAL PRICE **1.99** TONIGHT ONLY
 FINE QUALITY SANFORIZED WHITE COTTON BROADCLOTH. CHOICE OF COLLAR STYLES. SIZES 14 1/2 - 15 - 15 1/2.
 MEN'S DEPT. — MAIN FLOOR

WEDNESDAY NIGHT SPECIAL
 Reg. 2.19
FIRE PLACE GRATES
 SPECIAL PRICE **1.44** TONIGHT ONLY
 BLACK FINISH 1/2x1/2 IN. BAR STEEL WOOD GRATE FOR 24 IN. FIREPLACES. FRONT 19 IN., BACK 16 IN. SAVE!
 APPLIANCE DEPT. — SECOND FLOOR

WEDNESDAY NIGHT SPECIAL
1.29 VALUE SWEAT SHIRTS
 SPECIAL PRICE **77c** TONIGHT ONLY
 MED. WEIGHT SILVER GRAY KNIT COTTON. FLEECE INTERLINING. SIZES: SMALL, MED., LARGE, X-LARGE.
 SPORTING GOODS — BASEMENT

WEDNESDAY NIGHT SPECIAL
19.90 VALUE ADJUSTABLE IRONING TABLE
 SPECIAL PRICE **12.88** TONIGHT ONLY
 MOTHER AND DAUGHTER SPECIAL. ALL-METAL. CHROME LEGS. INSTANT ADJUSTMENT TO YOUR IRONING HEIGHT.
 HOUSEWARES — BASEMENT

AT LAST!
 A COMPLETE LINE OF WASHERS — ALL RUST-PROOF WITH PORCELAIN
INSIDE and OUT
 This time buy **Hotpoint**
 Included For More Leisure Living... **Hotpoint** The World's Finest
AUTOMATICALLY
 Fills, Washes, Triple-Rinses, Spin-Dries!
VERSATILE
 Pre-select your water temperature, Warm or Hot. Washes full or partial loads. Top loading from the left or right side.
THRIFTIVATOR
 Agitator, especially designed, gives positive dirt removing action followed by a deep overflow rinse.
ALL PORCELAIN
 Inside and out — All models — gives you range-top durability throughout the washer.
MATCHING DRYER, TOO!
 Come in for a demonstration and receive a free box of **all**
Regular Price \$269⁹⁵
 MODEL LH-8 NOW ONLY
229⁹⁵ AND YOUR OLD WASHER
 SEE IT TODAY AT . . .
CITY APPLIANCE, INC. OPEN EVERY WEDNESDAY 'TIL 9
 "Medford's Exclusive 'HOTPOINT' Dealer"
 127 NO. CENTRAL AVE. • MEDFORD • PHONE 3-5306
 137 EAST MAIN STREET • ASHLAND • PHONE 9-5831