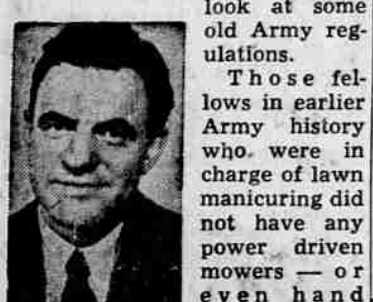


TAKING CHARGE OF KITTENS, this maternal pigeon is unmindful they have perfectly capable mother except at meal time when she permits tabby to feed them. They live on farm near Liberal, Kan. That's mom checking up. (International)

A Nichol's Worth of . . . Comment On This and That

By **HARMAN W. NICHOLS**
United Press Feature Writer

Washington — (U.P.) — Any GI griping about cutting the grass around the post might take a look at some old Army regulations.



Harman Nichols

The Pentagon tells us that the lads in the service in the 1860s had some rather difficult problems.

There was a regulation in 1861, for instance, which was relaxed a little a couple of years later, which read:

"This is under Article Nine. All grassed surfaces, except glacis (slopes and hills) will be carefully and frequently mowed (except in dry weather) and the oftener the better, while growing rapidly — the grass never allowed to be more than a few inches high."

All Hand Work
That was a rough enough order in those days. There were no push mowers. It was all hand work.

That order continued:
"In order to cut the grass even and close, upon small slopes, a light one-handed scythe should be used. And mowing the steep slopes, the mower or man should stand on a high ladder resting against the slope and not upon the grass."

That must have posed a problem. Also there was a rule of thumb in the early Army regulations that "All weeds must be eradicated."

Something that at this late date hasn't been solved with all of the millions of dollars spent on research, spray guns, D-D-T and the like.

Some Slack
By 1908, some of the tough directives had been leavened. At that point, a man could go about the acres with his sickle and so long as he kept the premises "attractive," he would not wind up in the soup.

In the year 1955, of course, the old Article 52, Section 1126 does not apply.

That one said that in barracks,

12 pounds of straw per month for bedding would be allowed each man.

That straw allotment was increased in 1913, under regulations, to a little more and maybe that was where the mattress was born—who knows.

The 1913 regulation said:
"Except for troops serving in the tropics, when mattresses are not supplied, a bed sack and 30 pounds of straw a month for bedding will be furnished for each enlisted man."

Baseball Expert Reaches \$32,000 Level on TV Show

New York — (U.P.) — Mrs. Myrtle Power, baseball's new Georgia peach, untangled herself from half a dozen good luck charms today and indicated she would shoot for pennant money on TV's "The \$64,000 Question."

Myrt, bolstered by a four-leaf clover, an Indian head penny, a turkey wishbone, an Oriental statuette, a lucky necklace and a jade ring, reached the \$32,000 level on the giveaway show by swatting her way through a baseball query. Next week, the bouncy 70-year-oldster from Buford, Ga., can retire with her winnings or try to double them.

But Myrt left little doubt she would go all the way. **Already Seeking Expert**
She revealed that she already was casting around for an expert to bring to the CBS-TV program next Tuesday. Under the rules of the show, Myrt can tote in a helper if she decides to go for the big question.

Myrt wore her lucky dress, a black silk number, for the third time on the show. She said she would wear it again next week.

"A ballplayer doesn't change his underwear during a winning streak," explained Myrt, "So I'm not going to change my dress."

The question pitched at her dealt with the seven ballplayers who collected more than 3,000 hits during their major league careers. Myrt was asked to supply the six aside from Ty Cobb, the old Georgia peach.

"Cap Anson, Tris Speaker, Hans Wagner, Eddie Collins, Nap Lajoie," she said and then added, "Paul Waner."

Sherry Fong Trial To Start October 17

Portland — (U.P.) — District Attorney William Langley announced yesterday the state will try Sherry Fong starting Oct. 17 in another attempt to convict her of the slaying of 16-year-old Diane Hank, a Portland high school girl, last year.

Originally Sherry and her husband, Way Him Fong, were convicted on the first degree murder count. But the verdict was upset by a ruling of circuit judge Alfred P. Dobson who presided at the trial.

The Fongs then demanded separate trial.

Walnut Crop To Be Free of Restrictions

San Francisco — (U.P.) — The Walnut Control board today recommended the entire California-Oregon walnut crop be marketed without quota restrictions because of crop loss due to heat damage.

It was estimated recent hot weather in California cut the crop from an expected 72,000 tons to about 65,000 tons. The Oregon crop was estimated at 6,700 tons for a combined Pacific coast crop of 71,700 tons.

117 S. CENTRAL

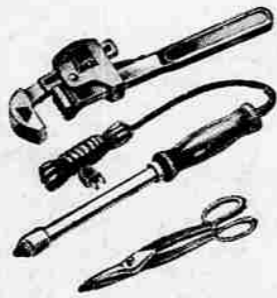


PHONE 2-6241

ANNIVERSARY SALE

LAST WEEK! HUNDREDS OF STORE-WIDE SAVINGS—HURRY

REG. 2.19 TO 2.49
YOUR CHOICE—EACH



1.88

Save at this one low price. 12-in. duckbill tinner; 14-in. pipe wrench; 100W soldering iron. Come in today.

REG. 14.95 BEST
STEAM IRON

11.96



Completely automatic for steam or dry ironing. Uses tap water—steams over an hour. Combination fabric dial.

27.95 WESTERN FIELD
3-SHOT SHOTGUN

24.88



Sale-priced bolt action repeater. Clip magazine. Easy take down. Recoil pad. Pistol grip stock. Full choke. 12-ga. only.

30% OFF NO-TRADE-IN LIST PRICE—WHEN YOU BUY IN PAIRS

SAFER DRIVING—BIGGER SAVINGS WITH RIVERSIDE DELUXE

1437* 1577*

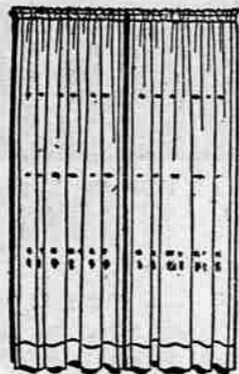
Each in Pairs 6.00-16 Blackwall Each in Pairs 6.70-15 Blackwall

Save 30% on Wards finest rayon tube-type tire—Riverside Deluxe. Constructed of top grade materials to rigid 1st-line construction standards. Featuring a deep, scientifically designed multi-row non-skid tread with a flatter profile for better steering control, greater skid resistance, more miles of safer driving. *Plus Excise Tax and your 2 old tires.

SATISFACTION GUARANTEED—10% DOWN—BALANCE ON MONTHLY TERMS.

DACRON PANELS
REGULARLY 1.69

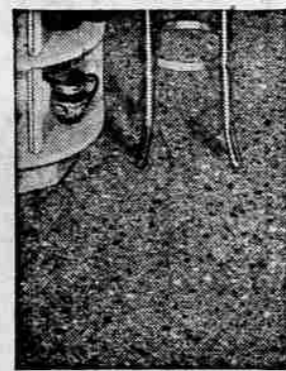
1.33 Each



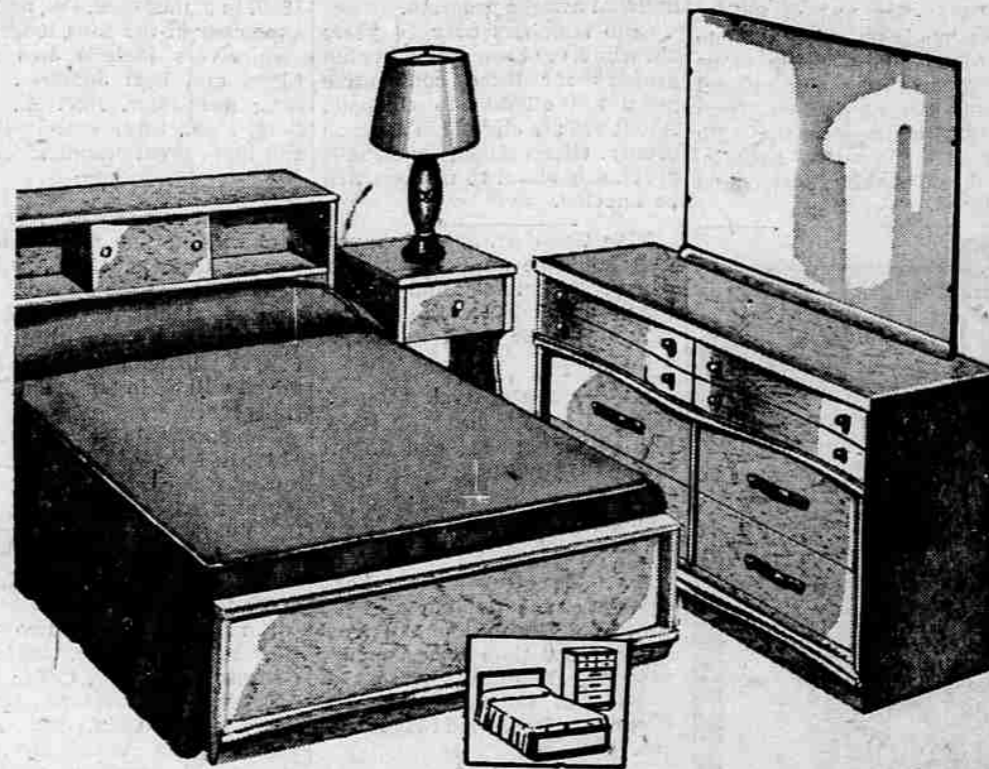
Now on sale — misty sheer, wrinkle-free Dacron Panels. Easy to wash, needs no ironing. Each panel 42x81".

REG. 95c QUAKER
FLOOR COVERING

85c

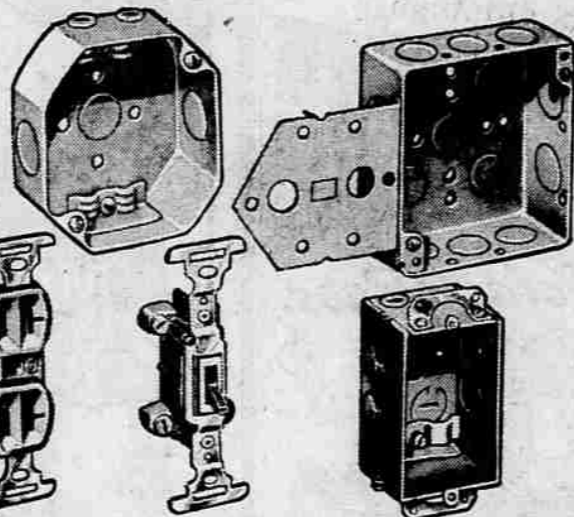


Famous Armstrong Quaker—heavyweight, best printed enamel made. Plaids, plumes, spatter designs 9 & 12" widths.



SAVE \$30 ON
179.95 SET
149.88

15.50 Down, on Terms. 2-pc. Set includes Bookcase Bed and Double Dresser. You get modern styling, soft white-tone or walnut finish, hardwood construction. Tilted, plate-glass mirror. Panel Bed, Dresser, 119.88. 3-pc. groups (with matching Chest) on sale. Stand . . . 19.88



32c TO 35c WIRING MATERIALS

Your choice, each 26c Save at Wards

Save now at this low price on electrical supplies—Toggle Switch; Duplex Receptacle; 4" Octagon Box with BX or Non-metallic clamp; 4" Square Box; 2 1/2" Switch Box with BX or non-metallic clamp.



7.95 TEXTURED
BROADLOOM

6.88 sq. yd.

Here's a top-fashion patterned weave at substantial savings! Deep plush-pile is outlined by low twist pile in a rich carved effect. Shown—a charming new medallion floral; see many others. Long-wearing wool and carpet-rayon. 9 and 12-ft. widths. Ask about Wards Terms

SAVINGS NOW ON
TYPICAL ROOM SIZES:

9x12' size, reg. 95.40, now 82.56
12x15' size, reg. \$159, now 137.60
27" width, reg. 5.95 m. yd., now 4.88

Be Sure To List Your Choice of China and Crystal In Our BRIDAL REGISTER 2nd Floor

Swem's
BOOKS • GIFTS • RECORDS

Wedding Announcements

- Imprinted Wedding Napkins
- Punch Bowl Rentals
- Shower and Wedding Thank You Notes