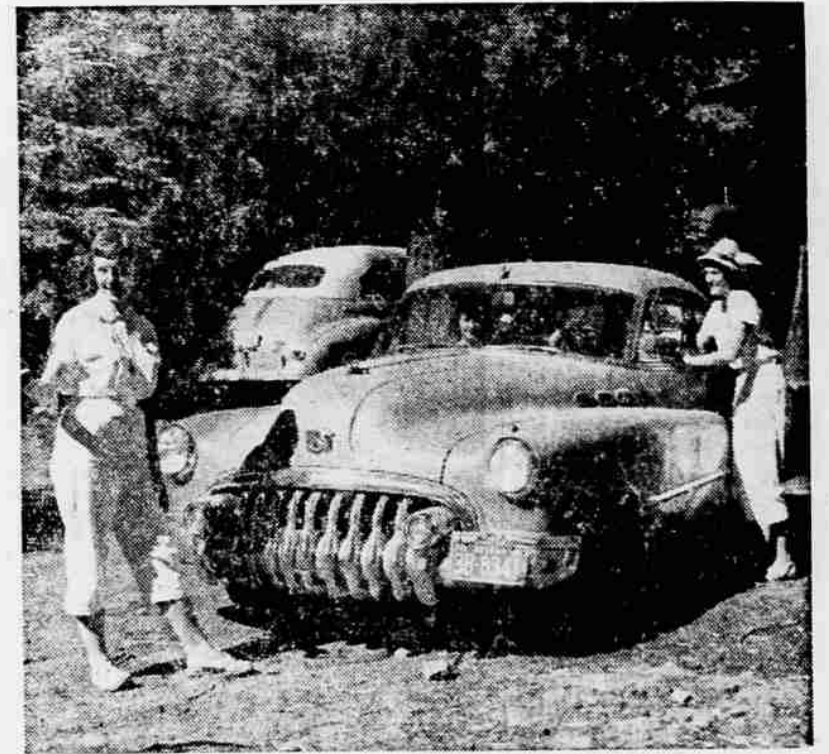




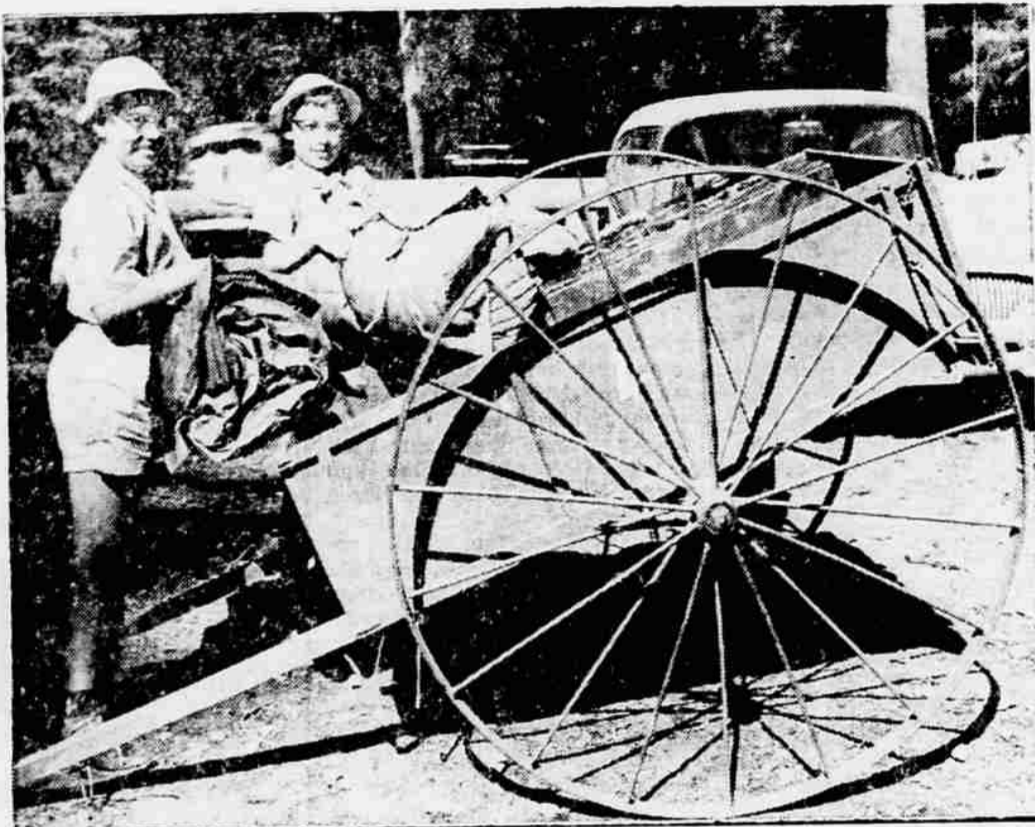
When a Girl Scout arrives at Low Echo, she checks in at the registration desk with the camp director, turns in her health certificate and is assigned to a unit. Pictured here at the registration desk are (left to right) Mrs. Lester Gilman, camp nurse; Peggy Simmonds, Phoenix; Miss Irene Knox, general director; Candace Newland, Medford; Mrs. Elliott Duffy, camp chairman; and Rilla Kaye Denherder, Medford.



After the camper is assigned to a unit, the next step in camp routine is to report to her unit leader. Shown here are Mr. and Mrs. Warren Arnold, Medford, checking in their daughter, Deanna, with Mrs. Nita Gray of Lexington, Ore., leader of Sunnydale unit. Mrs. Arnold holds Deborah Sue. The unit leader briefs the campers on rules and in other ways aids the girls to get settled in camp. Campers turn in their spending money to their leaders who in turn issue script for use at the canteen.



One of the duties of the counselors in training or CITS is to help parents park their cars in the lot. This picture shows Bev Cosler, Medford (at left) and Molly Walker, Medford, assisting M. L. Howell of Grants Pass to park his car. Toni Van Krohn is Mr. Howell's passenger. Counselors in training must be 17 years of age and after the proper training program, may become junior counselors at 18.



At Camp Low Echo the problem of transporting luggage has been solved by means of two-wheeled carts. Pictured here are May Satterfield (at left) and her twin sister, Mary. The twins, who are from Grants Pass, are shown loading their sleeping bags and suit cases into the cart at the parking lot from where it can be taken to the shelter to which they are assigned.

MEDFORD MAIL TRIBUNE
SUNDAY, JULY 24, 1955

Girl Scouts Camp At Low Echo

By Olive Starcher

For hundreds of young people in America, summertime means going to camp. This summer almost 500 girls from several districts in Oregon and northern California will enjoy camping at Low Echo, established camp of Rogue Valley area, Girl Scout council.

Located near Lake o' Woods in the mountains between Medford and Klamath Falls, the camp offers a wide program of activities, recreation and instruction in crafts.

Camp Low Echo, named for Juliette Low, founder of Girl Scouts, opened July 10 and will close August 13. A total of 480 girls have registered. The camp, in its tenth year, is sectioned into six units with each unit having four sleeping shelters. In addition there is a central lodge with kitchen, a canteen, an infirmary named the "Kiwanay D" after Medford Kiwanian Dames, and a storage room and camp catch-all called the "Rove Jo."

There is a dock for the boating program, and swimming classes are held daily.

Miss Irene Knox, Washington, D.C., is camp director this year, the first season that Low Echo has been headed by a director from outside the area. She is assisted by a large staff.

—(Brainerd photos).



Soon after arrival at camp, the Girl Scouts unpack and become acquainted with their "shelter mates." Unpacking here are (left to right) Barbara Forsgren, Melinda Mansfield, Rosalind Hummel and Diane Meloy, all Girl Scouts from Grants Pass. Each unit has three shelters for campers and one for staff, and eight campers are assigned to each shelter.



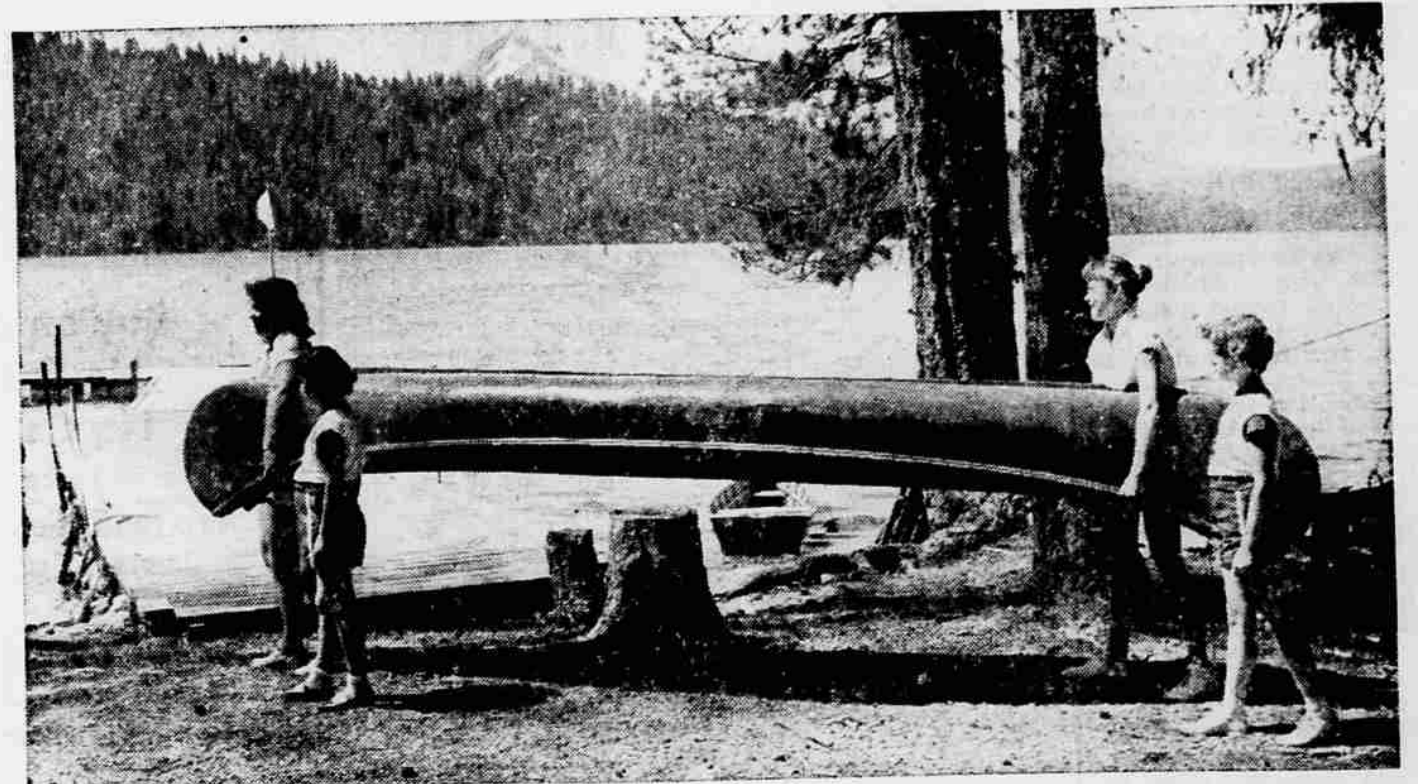
All good campers know how to make a campfire, and pictured here are three Scouts from Tall Timber unit, a new unit built this year to accommodate 24 campers. Shown (left to right) are Cynthia Holtgrave, Ashland; Jane Phillips, Seattle, a unit assistant; Dixie Taylor, Medford, and Kathy Smith, also Medford, ready with a big camp frying pan. This unit is for the youngest girls at camp.



Before meals each camper must "wash up." Each Scout brings her own wash basin as part of her camp equipment, and shown here in the middle of the washing chore are (left to right) Connie Cummins, Grants Pass; Mary Helen McFarland, Grants Pass, and Geraldine Hines, Medford. The three girls are assigned to Breezeway unit at Camp Low Echo.



Most of the activities at Low Echo are carried on in the groups to which the campers are assigned, usually 24 girls. The Scouts are given an opportunity to choose the activities in which they will participate, and select and plan these in group meetings, held with the counselors. The activity may be a hike, a cookout, a fun time with skits and songs or similar event. Here the girls of Conifer Grove meet with their counselors to plan coming activities.



Swimming and boating are two of the most popular recreations at Camp Low Echo, and here two program aides are shown with one of the new canoes. The two campers will only observe, since they have not passed the swimmers' test which qualifies them for this activity. Carrying the canoe are (at left) Barbara Cox, program aide from Medford, and Judie Newman, aide from Grants Pass and the campers are (at left) Kathryn McGuire and Mary Saunders, both Grants Pass.