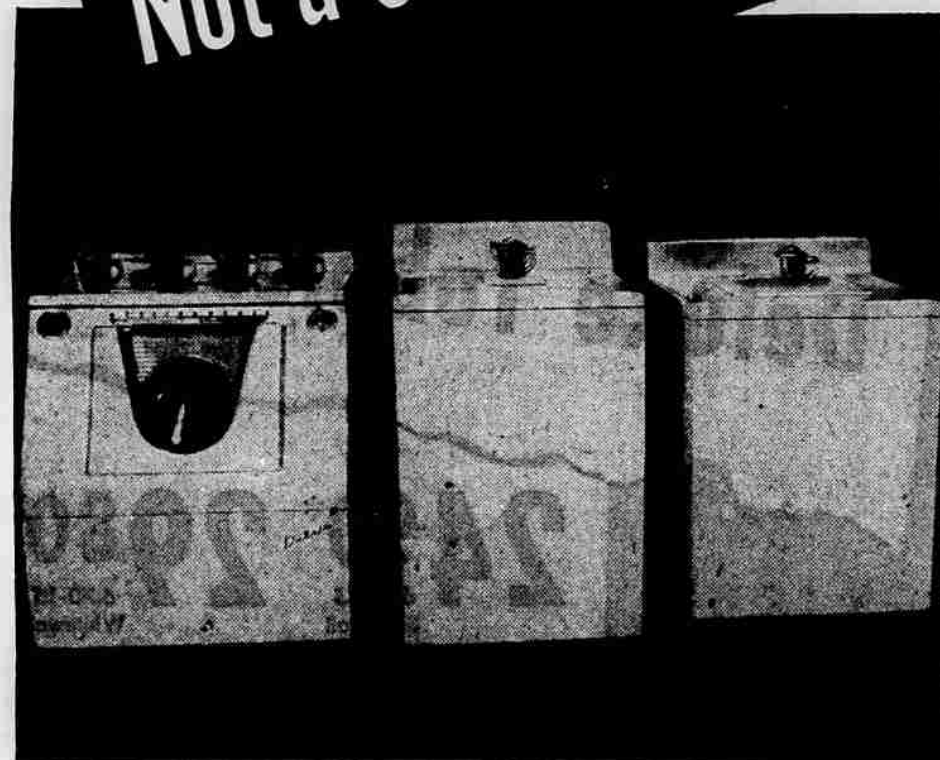




POSITIVE PROOF*

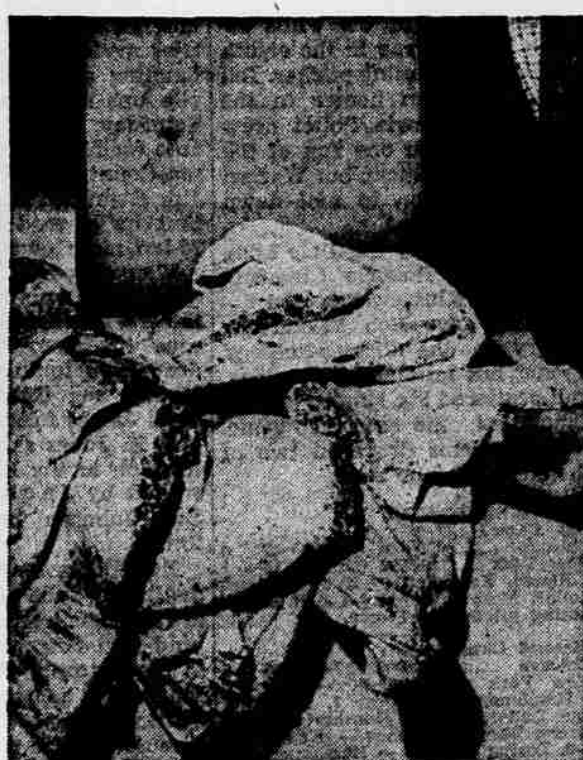
Westinghouse Laundromat Automatic Washer guarantees complete removal of all sand and dirt from clothes and Washer AUTOMATICALLY.



Actual test, under supervision of the California Testing Laboratories, Inc., used Westinghouse Laundromat (left above) and two well known automatic agitator washers. Seven heavy turkish towels were put in each machine. Also, 4 cups of sand were put in the Laundromat and only one cup in each of the other agitator machines.



The photo above shows that almost half a cup of sand remains in the bottom of this agitator washer tub, the remaining sand being embedded in the towels.



When towels were removed from this agitator washer, large deposits of sand were found in the folds of the towels, as show in above picture.



Photo above shows towels being removed from the Westinghouse Laundromat. There was no trace of sand on the towels or in the Laundromat tub.

**FIRST—
It Washes . . .
THEN—
It Dries!**

Automatically . . . in a single space saving unit.

Come in and see this celebrated Wash-N-Dry Laundromat!

SAVES TIME — SAVES SPACE — SAVES MONEY



- LOW DOWN PAYMENT
- EASY TERMS

* Westinghouse purchased commercially available machines and set them up in strict accordance with each manufacturer's instruction. The sand test described and shown in the above photographs was conducted and supervised by California Testing Laboratories, Inc., who certify to the authenticity of the photographs and test procedures. The laundering cycle was exactly as prescribed on the controls for each machine.

Only in the Westinghouse Laundromat was there no visible evidence of sand on the towels or in the washer tub at the end of the full washing and rinsing cycles. Virtually all of the sand placed on the towels in the two agitator type machines remained on the towels or in the tub at the end of the complete washing and rinsing cycles.

California Testing Laboratories, Inc.



YOU CAN BE SURE...IF IT'S Westinghouse

**ATTEND
OUR WESTINGHOUSE
LAUNDRY & COOKING
SCHOOL**

TUES., 2 P.M.

By Miss Marian Nylan
Westinghouse Home Economist
PRIZE GIVEN AWAY

TROWBRIDGE and FLYNN

ELECTRIC COMPANY

214 W. Main • Medford • Phone 2-5211