

Planning Commission Approves Annexation Plan; Studies Others

The Medford planning commission voted last night to recommend to the city council annexation of the Laurelhurst addition, called public hearings on three zone change requests, and appointed four committees to survey other requests.

The request from Laurelhurst addition asks annexation of an area between Crater Lake ave. and an alley between Pearl st. and Oregon Terrace. Part of the addition is within the city.

Election Necessary

City Manager Robert Duff told the commission an election by the people in the area would be necessary because 100 per cent of the property owners did not sign the petition.

Duff said "there is a serious sanitation problem in the area and annexation would give the people an opportunity to get the service installed."

E. N. McKinstry, city engineer, suggested that the annexation of the addition include about 150 feet north of Stevens ave., to prevent joint city-county ownership of a street.

The council probably will consider annexation of the addition at its next meeting May 17. Hearing Called

A public hearing was called for the next commission meeting on a request from Dr. Edwin R. Durno that an alley in the Wildwood addition west of Riverside ave. and north of Edwards st. be vacated. Dr. Durno said the alley would be vacated with a reservation to the city for an easement of a storm sewer under the alley.

A public hearing also was scheduled on a request from Dr. Durno that property in the Manley addition be rezoned from multiple family to commercial, and a hearing was set on a request to rezone a portion of East Main st. from multiple family to commercial zone. Both hearings will be held at the next regular commission meeting.

A hearing also will be held on a request to change from one to two family dwellings the southeast corner of Jackson st. and Crater Lake ave. in Queen Anne subdivision.

To Study Requests

Henry Fisher and Allan Perry were appointed a committee to study a tentative plat of Douglas addition number 1 on Columbus ave. and Del Harvey and Mark Goldy were appointed to study a request of Homer J. and Clara G. Bringle asking a 10 foot setback instead of a 20 foot setback on Orange st.

McKinstry and Mrs. Edith Eden were appointed to study a request from Olan H. and Dorothy Sneed to rezone from two family dwelling to commercial district an area in the Fruitdale addition on Jackson st.

Fisher and Don Root will study a request from the Congregational church, 300 Oakwood dr., that the site be annexed and zoned for a future church building. The church also requested that a church school at the site be connected with the city sewer system. Fisher and Root are to report as soon as possible on their findings.

Other committees will submit reports at the next meeting of the commission.

The commission tentatively approved a plat of the McIntyre subdivision north of Crater Lake highway and west of the municipal airport.

Pinball Issue To Get Hearing

Portland —(U.P.)—A public hearing was requested today on the issue of whether pinball machines should be allowed to continue operating here.

The request was made by the AFL Teamsters Union in a letter to the city council from Clyde C. Crosby, international representative here for the union. It will go before the council for consideration May 19.

Pinballs will become illegal here as soon as the State Supreme Court hands down its mandate upholding Portland anti-pinball ordinance. This is expected sometime this month.

Crosby wrote that "we of the labor movement are particularly disturbed by prospects of any ban on pinball machines for the reason that many small shopkeepers, restaurateurs, cigar stores and taverns are dependent in considerable measure on the income they have enjoyed from these amusement devices." He said the machines should be licensed.

Talent High School Painted Light Green

Talent — Sullivan Brothers Paint company of Medford recently completed painting Talent High school's new building a pastel green, and expect to complete trimming later this week. Landscaping of the grounds will be done this summer.



HUMANITARIAN SERVICE—In ceremony at White House, leaders of the United Cerebral Palsy 1953 campaign presented President Eisenhower with scroll "for his humanitarian service to, and inspiring support of America's cerebral palsied." Roger S. Firestone, chairman of the campaign (right) made the presentation. In center is Leonard H. Goldensen, chairman of the board.

Cold Rain Covers Much of Midwest

By UNITED PRESS

A wide pocket of drizzles and chilly rain covered much of the Midwest today as unseasonable cool weather stretched into New York state and New England.

But fair skies and dry weather were the rule in most of the rest of the country and temperatures were due to rise in the Northwest.

Showers and drizzles were common in most of the Great Lakes region, while a belt of showers and thundershowers extended through parts of Missouri and Iowa into the Southern Plains.

Dust bowl areas in Colorado got welcome rain and more than an inch of rain soaked most of Iowa.

Patterson Urged To Veto Compensation Bill

Portland —(U.P.)—The Portland Central Labor Council voted unanimously last night to urge Gov. Paul Patterson to veto a bill which provides for a boost in unemployment compensation to \$35 per week.

The council said many thousands of workers would be cut off from benefits by new restrictions imposed by the measure.

MINISTER FINED

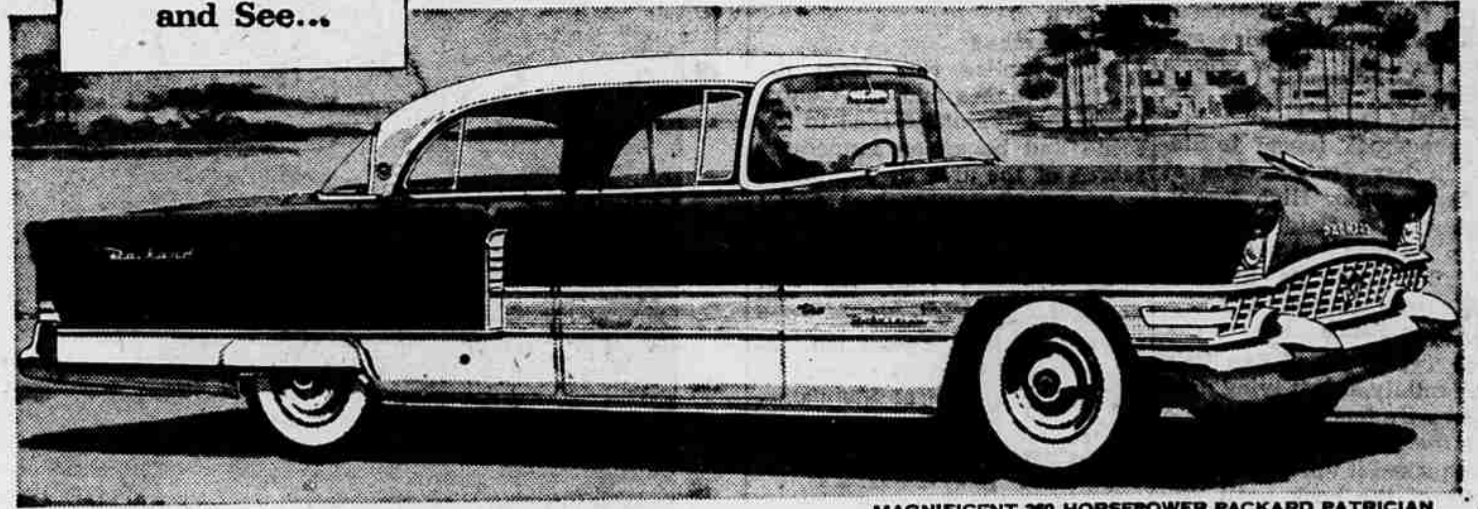
Detroit — (U.P.) — The Rev. Thomas Gardner, 48, was fined \$175 for breaking up a fight between two knife-welding men.

The pastor was fined for reckless driving Monday after he admitted driving his auto into with drawn knives on a street corner.

Sixty-five per cent of the buildings in Okinawa, scene of the last big battle of World War II, have been rebuilt.



SMOOTHS THE ROAD... LEVELS THE LOAD — *Automatically*



MAGNIFICENT 200 HORSEPOWER PACKARD PATRICIAN

the New PACKARD with Torsion-Level Ride

A truly distinctive fine car — the new Packard. Distinctive in having exclusive Torsion-Level suspension... providing a ride so smooth, so level, so comfortable on any road it has created a higher concept of motoring pleasure! Distinctive in its quiet magnificence, with color harmonies both refreshing and sophisticated and interiors designed for your personal luxury.

achievement in creative engineering leadership — eliminates conventional coil and leaf springs. In other cars, twisting forces due to wheel shock are transmitted to the frame with resulting pitch and bounce of passengers and wracking of car body and frame. With the new Packard these same twisting forces are transmitted along the new torsion bar system and absorbed before they can reach frame or passengers.

breathing" V-8 engine, developing up to 275 horsepower... and the agile automatic response of Packard's two-in-one Twin Ultramatic Transmission. Here, in all its distinction, is a fine new car with a fine old name. "Ask the Man Who Owns One."

We invite you to Take the Key and See... LET THE RIDE DECIDE

COOKSEY MOTOR CO., Inc.

134 SOUTH RIVERSIDE

PHONE 2-5219

117 S. CENTRAL



PHONE 2-6241

APPLIANCE SALE

Buy on Terms, Pay as Little as \$5 or \$10 Down



SUN-happy TUB-happy

Fun-Makers For All Their Bright Spring and Summer Play Clothes

TOPPER SETS
With plastic lined panties for boys and girls. Cute as a button.
\$2.19 up

Bouffant Slips
In taffetized nylon with nylon jersey top or the miracle fabric which does not require ironing.
\$2.19 and \$3.19

DRESSES
Many new sun dresses in lovely materials including the "no iron" materials.
\$3.98 up

SHOES
RANCH HOUSE MOCS
White, red, pink and beige. Sizes 10 to 3... **\$2.98**

SANDALS
Open or closed toes in red, brown, and white... **\$2.50 up**

INFANTS' SLIPPERS
Many styles and colors to choose from... **\$1.98**

For Boys There Are CABANA SETS
Sets of all descriptions. Lots of seersuckers, broadcloth and "hesco" a "no iron" fabric.
\$3.19

SUITS SWIM
Lots of cottons. Many cute for sun suits too.
Boys' **\$1.39 and \$1.69**
Girls' **\$2.49 up**

Shop... **Leon's** **TOTS-TO-TEENS**
105 EAST MAIN



219.95 WARDAMATIC—SAVE \$28

\$5 down on terms **189.88** Just \$9 per month

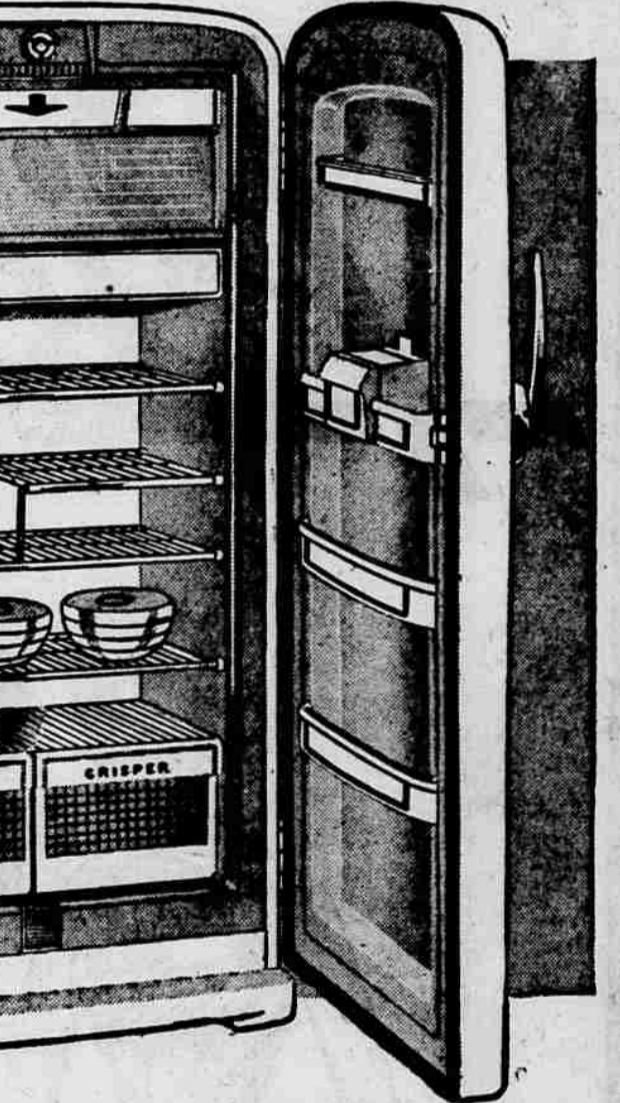
Equals national brand washers priced \$80 to \$100 more. Your Wardmatic washes, rinses, spins damp-dry, and shuts off automatically. Gentle, thorough agitator action loosens stubborn dirt. Surface scum doesn't drain down through your clothes—overflow rinsing floats it up over basket top. "TWIN" AUTOMATIC ELECTRIC DRYER — gentle to all fabrics... **171.95**



347.95 M-W Freezer —save \$70. Family size—15 cu. ft. Stores 525 lbs. in 2 compartments. "No-sweat" cabinet walls. Sparkling baked-on enamel finish... **277.88**



REG. 279.95 M-W 40-in. Electric Range with all the latest features: clock controls deep-well, appliance outlets, and oven (oven has new stripped-white interior)... **239.88**



SPECIAL PURCHASE—SAVE \$40

228.88 \$10 down on Terms \$11 per month

11.1 Cu. Ft. Refrigerator (comparable to national brands selling for \$40 more) plus 5-pc. plastic storage set—at this low price. Chrome and frosted-green trim. Full-width freezer stores 52 lbs. Twin crispers. 4 handy door-shelves.



17" TV—wonderful performer. Compact, mahogany colored cabinet—ideal for apartment, trailer, or motel. Year warranty. \$5 down, on Terms. Reg. 129.95... **119.88**

\$5 OR \$10 DOWN ON TERMS DELIVERS ANY M-W APPLIANCE TO YOUR HOME