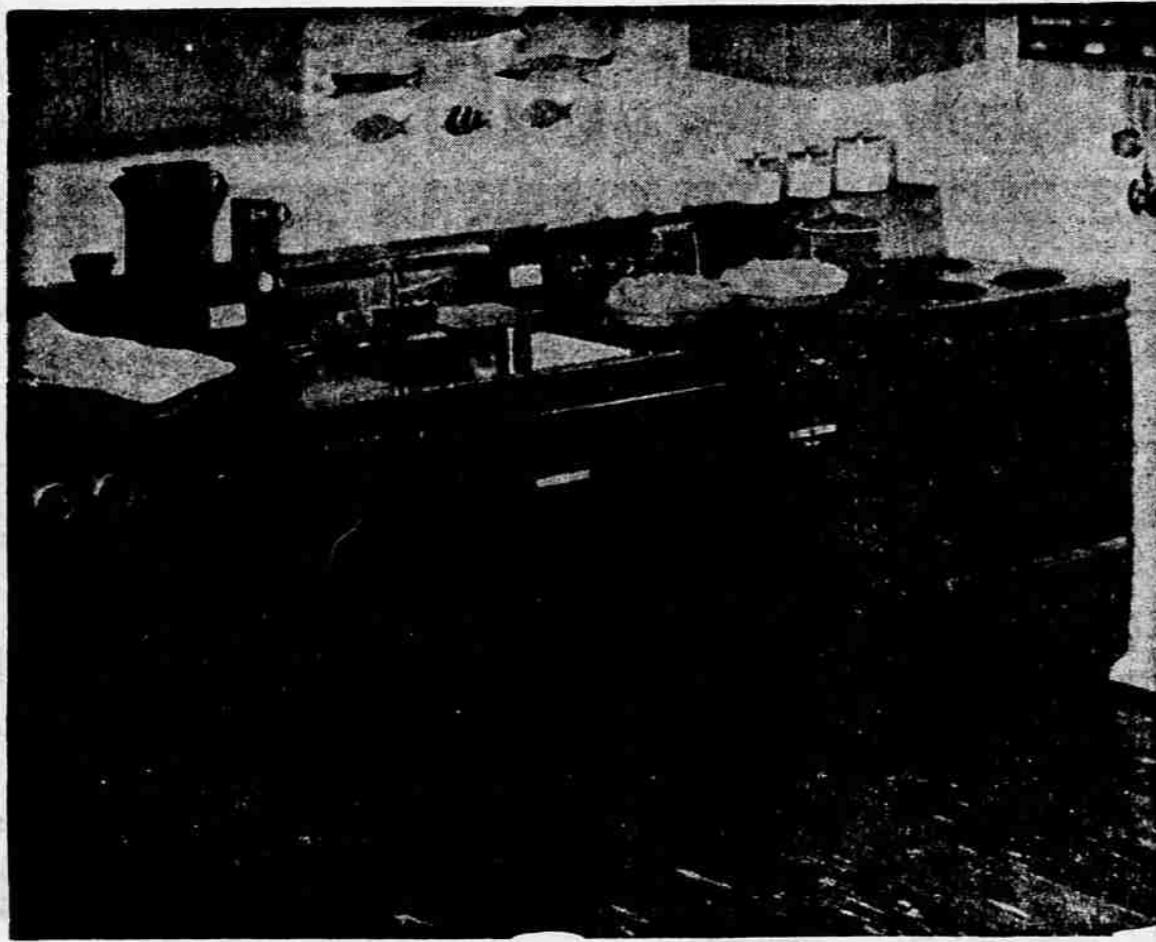


Here!

You've Read About It In "Life" Magazine ... Everyone Is Talking About It... Now It's Here!

COME IN AND SEE IT!

General Electric's Amazing KITCHEN OF TOMORROW! ON DISPLAY NOW FOR A LIMITED TIME!



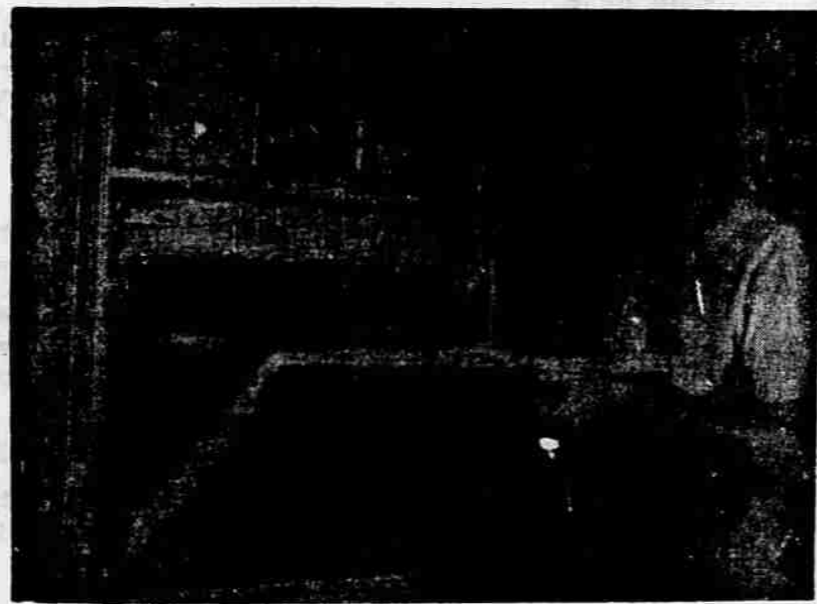
GENERAL ELECTRIC has taken a BOLD STEP in offering a FULL LINE of fine appliances in WONDERFUL NEW COLORS . . . that means much greater production, and only a manufacturer like General Electric could possibly do it. SIX most desired colors to choose from . . . and leading paint manufacturers are offering them for those who like to MIX-AND-MATCH their new kitchens. NEW "HOME OF TOMORROW" styling, too, and wonderful space-saving combinations as shown in pictures at the left!



5 in 1 For A BRIGHT NEW KITCHEN!

Designed for General Electric by George Nelson, this convenient, space-saving group—all with gleaming stainless steel top, includes combination washer and dryer, sink with garbage disposal and dishwasher and range. It's the much talked of group you've seen in full colors in LIFE magazine—now see it at our store. It is COMPLETE, ready to move into your present home or your new home, with wiring and plumbing ready for quick installation. We've already sold one here—the FIRST INSTALLATION to be made in Oregon!

NEW CONVENIENCE In Your Cooking With a G.E. BUILT-IN RANGE!



YOUR kitchen can have that modern, functional "custom" look . . . your cooking will be done easier, quicker, and you can choose from five colors or white to match your color scheme. This handsome built-in, space-saving range is so neat, trim and practical you'll want one at once—and we have it for you!



Magnificent New G.E. WALL REFRIGERATOR Hangs Like a Picture

In this de luxe refrigerator-freezer are more than 10 cubic feet of storage room — 8.7 cubic feet for fresh foods and 2 cubic feet for frozen. It is 5 feet 4 inches long, 3 feet 3 1/2 inches high and 17 1/2 inches deep. Plenty of room for big platters. 1. The exterior is long-lasting baked enamel with a wide band of textured aluminum. 2. All 3 doors are kept shut by famous G-E Alnico Magnets. There are no handles, no catches. 3. Separate vegetable and fruit compartments have transparent, sliding doors. 4. Top shelf provides space for tall bottles. Shelves are movable and adjustable to various levels. 5. Separate compartments for butter, egg rack, and door shelves for small jars and cans. 6. Zero-degree food freezer has room for up to 83 packages of frozen foods. 7. Four new-style Mini-Cube ice trays. 8. Frozen fruit juice storage rack. 9. Dependable and whisper-quiet, sealed-in G-E refrigeration unit.



Imagine!

MIX OR MATCH COLOR CHOICE! NEW "TOMORROW" DESIGNING—AND

PRICES YOU CAN AFFORD!

Yes, the NEW General Electric appliances in newest designs and colors are SURPRISINGLY MODERATE IN COST . . . Choose from SIX EXCITING DECORATOR COLORS . . . your paint dealer can match them — and we can REFINISH YOUR OTHER APPLIANCES TO THE EXACT SHADE. Our completely equipped shop, with experts doing the job and infra-red baking equipment, will make your appliances like new. Let us show you how General Electric's MILLION DOLLAR GAMBLE can mean the "Kitchen of Tomorrow" for YOU!

Come In! See Them Here — NOW!

AUTHORIZED DEALER
GENERAL ELECTRIC APPLIANCES

HOME APPLIANCE

MAIN STORE
115 E. Main
BARGAIN STORE
303 S. Front