

# Mercury Has Smoother, More Comfortable Ride; Improved Road Stability

## Frame Closer To Ground Adds To Hugging Feel

The smoother, more comfortable ride and improved road stability of the Mercury for 1955 are in part due to an increased wheelbase, a wider rear tread and a change in mounting the rear shock absorbers. The Mercury is on display at Medford Motors, Sixth and Ivy sts.

On all 1955 Mercurys except station wagons, the wheelbase is 119 inches, an increase of one inch, and the rear tread is 59 inches, an increase of three inches. The central portion of the new, stronger frame is one inch closer to the ground, adding further to the road hugging feel and improved handling characteristics.

The rear shock absorbers are mounted at a more horizontal angle and give a softer "boulevard" type of ride and tend to reduce lateral shake.

### Tubeless Tires Standard

Tubeless tires with completely new tread designs which give better traction and virtually eliminate tire squeal when cornering are standard on all 1955 Mercurys.

The entire driveline, including transmission, driveshaft and rear axle is new, offering extra strength and durability required by the more powerful Mercury engines for 1955. The increased load capacity of all bearings, and gear teeth in the transmission, rear axle and universal joints results in quieter operation; a shorter driveshaft makes the whole driveline smoother. The carrier type rear axle has an 8 3/4 inch ring gear to handle the increased torque of the 1955 engine, compared to an 8 1/4 inch ring gear in previous models.

### Two Exhaust Systems

Mercury for 1955 has two new exhaust systems, using a 32-inch reverse flow three-pass oval muffler. In the Montclair and Monterey series, where dual exhausts are standard equipment, there are two separate exhaust systems, one from each manifold. Back pressure is reduced 32 per cent over the single exhaust system. In the Mercury Custom series a new "Y" type exhaust system utilizes a similar muffler and reduces back pressure 20 per cent. In this "Y" type exhaust, the piping from the manifold on the left bank joins the exhaust pipe from the other bank just back of the transmission. Duals are available as op-



Beauty and performance are combined in the completely new Mercury for 1955 through the utilization of new styling, new power plants and other mechanical improvements. A choice of two engines—one developing 188 horsepower and the other 198 horsepower—is offered. Entirely new body styling, including canted headlights, full-scope windshield and a distinctively different rear end appearance, has been combined with sparkling new interior trims and fabrics. Shown here is a 1955 Mercury Monterey hardtop coupe.

### Canary Island Farmers Draw Water From Air

Washington — Farmers extract water from the air on Lanzarote in the Canary Islands where annual rainfall may be only two inches a year, says the National Geographic Society.

Lanzarote has no wells for irrigation. Consequently farmers strew seeds on arid ground; then four or five inches of lava are spread over them. The lava acts as a condenser, drawing moisture from the sea air.

Corn, alfalfa, chick-peas, and grapevines grow under these conditions. The plants are stunted but hardy. Cornstalks little more than a foot tall bear fully developed ears.

### HELP WANTED

Providence, R. I. — (U.P.) — Brown University students complained they hear fewer big-name speakers than other Ivy League colleges. An editorial in the student newspaper, The Brown Daily Herald, said: "The campus is anxious to hear great people . . . from (Robert) Frost to Grandma Moses."

Seventy-eight per cent of vehicles involved in fatal accidents in 1954 were traveling straight ahead.

tional equipment on the Mercury Custom series.

More than 30 square inches of brake lining area has been added to Mercury's redesigned brakes for 1955. The front brakes have been widened a half inch and the rear brakes a quarter inch. Power brakes have been revised to improve their operation when the power is off.

### GRANGE

#### Shady Cove Grange

Shady Cove Grange will meet Wednesday, April 27 at the school gym. Potluck dinner will be served at 7 p.m. Handcraft articles should be brought for the display table.

Several ladies are to tell under what circumstances they met their husbands. All Grangers are invited to attend.

#### Phoenix Grange

Phoenix Grange will confer first and second degrees Tuesday, April 26, at eight o'clock and Granges having candidates are invited to bring them for this initiation.

### Court Records

#### DISTRICT COURT

Raymond R. Note, overload, \$50.  
Dean L. Chaney, overload, \$50.  
William J. Easter Jr., violation of basic rule, \$12.50.  
Harold R. Graves, overwidth load, \$15.  
Earl R. Stephenson, only one headlight, \$10 forfeited.  
William J. Cook Jr., overload, \$117.  
Allen R. Hickey, overload, \$71.  
Pearlie O. Strait, overwidth load, \$10.  
Lillian C. Hanscom, failure to stop at stop sign, \$10.  
Joan B. Catalano, failure to stop at stop sign, \$10.

#### CIRCUIT COURT

Ruth LaVaughn Newbury vs. Kenneth Donald Newbury, divorce decree.  
Cecil Ralph Welburn vs. Alicia Welburn, divorce decree.  
Rosemarie Wolf vs. Louis M. Wolf, appearance and divorce decree.  
Rose Ann Jones vs. Jack Howard Jones, divorce decree.  
Joy Claire Budden vs. Sidney G. Budden Jr., divorce decree.

#### MARRIAGE LICENSE APPLICATIONS

James LeRoy Bellinger, 39, Medford, and Thora Jeanette Larson, 37, Central Point.  
Edward W. Earnest, 26, of Box 936, Central Point, and Yvonne Irene Hewitt, 21, of 603 West 11th st., Medford.  
Dead line Sunday. Classified in at noon Saturday; 10 a.m. Monday for Monday; other days 5:30 previous day.

### LUCKY

Pittsfield, Mass.—(U.P.)—The auto of Donald Ballard, 20, skidded on ice, shot up an embankment, turned over twice, bounced back to the street on its wheels and slid for 100 yards before coming to a stop. Ballard received a cut finger—when he was examining the wreckage after stepping from the car unscathed.

Speeding on U. S. streets and highways injured 659,000 men, women and children.

## Pakistan Elephant Training Dangerous

Washington — East Pakistan mahouts must display a high degree of bravery in taming wild elephants, says the National Geographic Society.

Corralled animals mill about furiously, crashing into the reinforced walls. The beasts are left two days without food or water to weaken them. Then trained elephants guided by mahouts enter the corral. Two of the tame elephants edge a wild animal into a small outer enclosure.

A daring mahout performs certain religious rites, then climbs the wall and crawls among the elephants. He touches the feet of the tame beasts so that they will not step on him. Then he slips a rope around the back feet of the captive and ties it to the wall. The animal's neck is also tethered to the stockade. Food and water are brought in. Within three days the elephant learns man is a friend. In a week it is ready for training.

Deer antlers are made of solid bone and are shed once each year, while horns have only a bony core surrounded by a horny sheath and are a permanent fixture, never shed except in the case of the prong-horned antelope.



REVOLUTIONARY—Walter F. Strader, an engineer, stands by his racing car he calls "Planacircle Special" at Los Angeles. Strader declines to discuss his engine but says it has no cylinders, no pistons, no valves or crankshaft, but employs a system of rotors. He has entered the car in the 500-mile Indianapolis race next Memorial Day.

### FULL OF OZONE

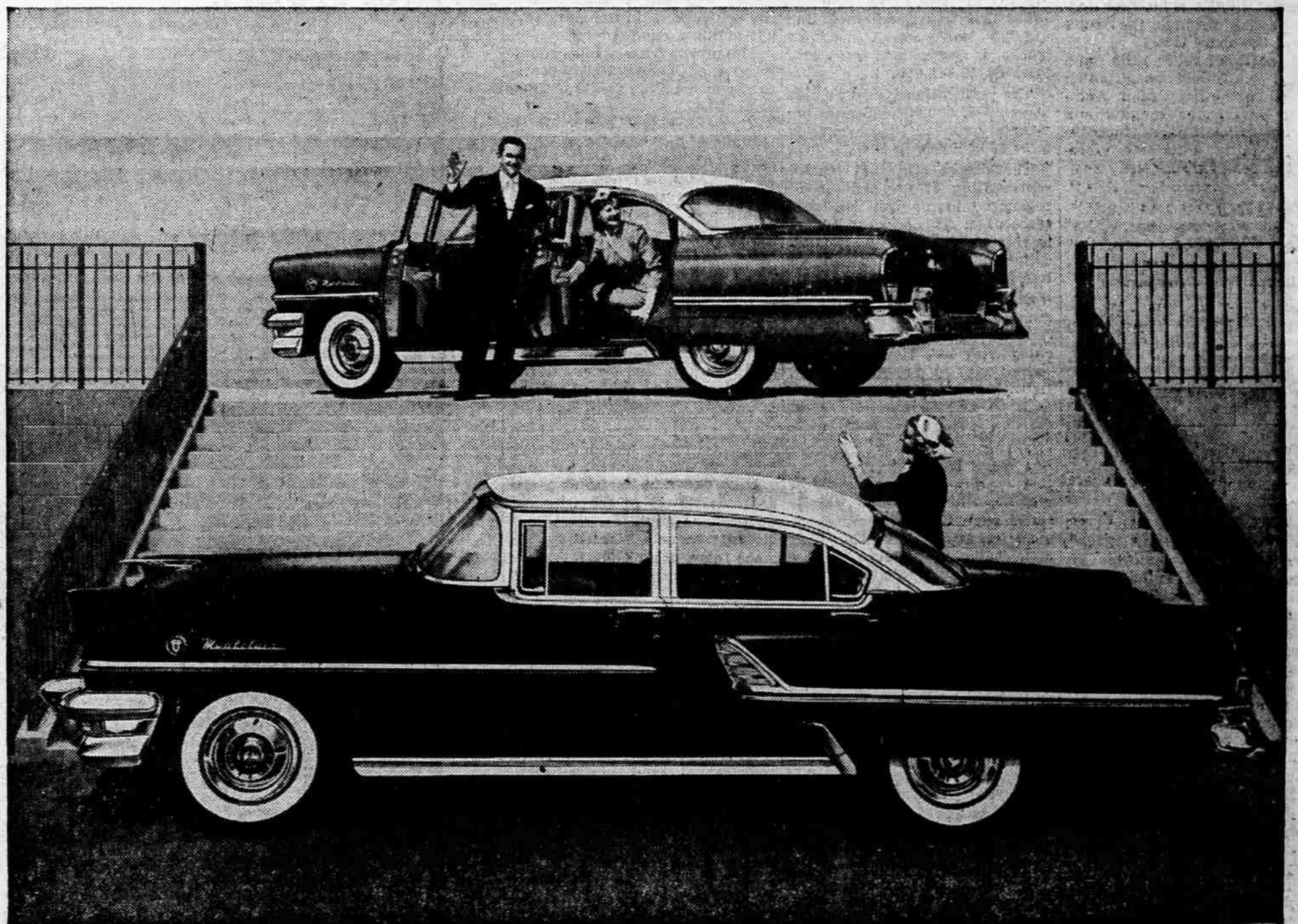
Minneapolis—(U.P.)—The University of Minnesota has ozone in its chemistry department. Kenji Ozone has been appointed a junior scientist in physiological chemistry.

### GOOD IN DEED

Oliver Springs, Tenn.—(U.P.)—When fire destroyed the home of Mrs. Linda Brandenburg, charitable neighbors rented and completely furnished a new home for her within 24 hours.

### SPRING TRAINING

New Bedford, Mass.—(U.P.)—Police are looking for a sorehead. He's the man who attempted to break into the home of Garcia Benton. Benton broke a baseball bat on his head.



## Announcing — America's newest, lowest, smartest 4-door Sedan

Newest model in Mercury's Montclair Series lets you enjoy "hardtop" beauty with 4-door convenience

It's the newest Mercury of them all—the Montclair 4-door Sedan, and the photograph shows you that not one bit of the original Montclair hardtop beauty has been lost. It has the same dramatic lowness—only 58 1/2 inches from road to roof. And see how convenient it is to get in and out. Everyone who admires

hardtop styling, but wants the roominess and convenience of a 4-door model, can now eat his cake, and have it too!

198-hp Super-Torque V-8 with dual exhausts Seldom has an engine caused as much enthusiastic comment from auto editors. And once you drive a Montclair, you'll see why. It gives you instant, on-the-spot pickup at every speed—from zero to super-highway limits. A four-barrel carburetor, unique new high-compression spark plugs, and dual exhausts are yours at no extra cost. Features like these are usually extra on medium-priced cars.

Exclusive new power lubrication gives Mercury widest choice of power features The Mercury Montclair offers a new optional power feature—power lubrication. And it's exclusive with Mercury in the medium-price field. You push a button on the dashboard and vital parts of your car are automatically lubricated. You can also choose optional power steering, power windows, power brakes, 4-way power seat and Mero-O-Matic Drive. Why not come in and see this newest Mercury? It costs a lot less than you think. And your present car is worth a lot more than you think on a trade-in at your Mercury dealer's.

IT PAYS TO OWN A **MERCURY** — FOR FUTURE STYLING, SUPER POWER

BE SURE TO SEE THE LINCOLN-MERCURY EXHIBIT AT THE MEDFORD AUTO SHOW — 8th & IVY — APRIL 23

6th & Ivy

**MEDFORD MOTORS**

• Phone 2-6157

**BILL OF SALE**  
PAID IN FULL  
The power of ready cash

The same old story is happening around you every day. The man with the ready cash is the man with the power. While others dicker and hunt for money, you step in and buy—usually at a lower price. While others pay out interest, you receive interest.

### Do You Have Cash Power?

The way to get cash power has been starting you in the face for years: the Payroll Savings Plan. It's one of the world's surest, easiest means of amassing big funds of money. For example, do you know that if you put just \$7.50 a week into the Plan, in 9 years, 8 months, you'll have \$4,277 cash? Here's why:

### A 100% Sure Investment Plan

When you sign up for Payroll Savings at your pay office, you name an amount (a few dollars or as much as you want). Every payday, before you can get your hands on it, that money is automatically

saved out and invested in U. S. Series E Savings Bonds. Now, these Bonds earn such good interest that in 9 years, 8 months, they pay you back \$4 for every \$3 you've put in. No wonder the money piles up fast!

### Declare Your Financial Independence

Remember, when you join Payroll Savings, you're starting to make money with money. And you're building cash power that will help you make even more in the future. It's the surest road to financial independence. Take that road now. Sign for Payroll Savings today! (If you're self-employed, start your own plan by investing regularly in Bonds where you bank.)

If you want your interest as current income, ask your banker about 3% Series H Bonds that pay interest semiannually by Treasury check.

The U. S. Government does not pay for this advertising. The Treasury Department thanks, for their patriotic donation, the Advertising Council and

**Medford Mail Tribune**

