

Little White House Draws Over 100,000 FDR Admirers Yearly

Warm Springs, Ga.—(U.P.)—Ten years have passed since Franklin D. Roosevelt died here April 12, 1945, but more than 100,000 persons a year still travel out of their way to pay their respects.

Most of them are not the gawking tour-guide variety. They leave the impression of being friends of the family who drove over for a visit.

Raymond Noon, former chief probation officer in New York City when FDR was governor of New York and who is now custodian at the "Little White House" property, said at least 95 per cent of the visitors are Roosevelt admirers.

He said an elderly woman from Alabama told him during a visit that every time her Social Security check arrived she said "thank you Mr. Roosevelt."

Introduced In 1924

The late President, a polio sufferer, was introduced to Warm Springs in 1924 by his friend, George Foster Peabody. He became an increasingly regular visitor to the spa, then a run-down former summer resort.

As news spread about FDR "swimming his way back to health," infantile paralysis sufferers became arriving unannounced and unasked. Warm Springs polio hospital and the

early research into cause and treatment of the crippling malady grew from that "Topsy" start to its present status as the pilot hospital for rehabilitation of polio patients.

Indian legend has it that wounded warriors were given safe conduct in battle when they journeyed toward Warm Springs to be healed. Actually the water there has no known medicinal qualities. But it does have soothing 88-degree warmth and promotes the hydro-therapy so beneficial in treatment of such ailments as polio.

The "Little White House," a columned, simple cottage with almost austere furnishings, first

was occupied by Mr. Roosevelt in 1932 and became one of his favorite spots. He once was quoted here that "only Warm Springs and Eleanor," his wife, kept him going.

Portrait Displayed

On the morning of April 12, 1945, the newspaper on the chief executive's breakfast tray proclaimed in big black headlines: "9th 57 miles from Berlin."

In the afternoon, his few other appointments having been dispatched, Mr. Roosevelt received artist Elizabeth Shoumatoff in the living room. She began the finishing touches on a portrait she was doing of the Presi-

dent.

Suddenly, Mr. Roosevelt put his hand to his forehead and slumped in his chair. He was borne into his bed chamber off the living room where he died.

Because its primary function was the care of patients, the Warm Springs Foundation, which received the "Little White House" in the Roosevelt will, turned it over to a Georgia memorial commission in 1946 and the place was opened to the public Oct. 28, 1948.

The Shoumatoff portrait is a favorite item of interest there. It is protected by a \$50,000 insurance policy and an elaborate burglar alarm system that goes

off when anyone gets too near. A museum in the basement of the building contains the best of thousands of gadgets and mementoes given to FDR by persons from all over the world.

GRANGE

Upper Rogue Grange

H.E.C. of Upper Rogue Grange will meet April 14 at the Grange hall at 1 o'clock. Hostesses will be Mrs. Crenshaw and Mrs. Ulrich. Chairman, Mrs. Lockstine, announced that there would be a plant sale at the next Grange meeting, April 21, proceeds to go into the H.E.C. fund.

Fong Murder Trial Enters Second Day

Portland — (U.P.) — The Fong murder trial entered its second day today with Wey Him Fong and his wife, Sherry, accused of the slaying of 16-year-old Diane Hank. The Portland girl's body was found tied in a blanket along a sidewalk near Washougal, Wash., on Feb. 26, 1954.

The Fong's attorney, Irvin Goodman, set the stage for a lengthy court battle yesterday by charging that the case was "steeped in politics." He said his clients have not been allowed enough time to prepare for the trial.

The day FDR died

Where were you when you heard the news of President Roosevelt's death? Lela Stiles, former White House secretary, was behind the scenes in Washington. Here are her moving recollections of what happened on that fateful day, exactly ten years ago. Get your copy of *The Saturday Evening Post* and read it today!

NOW FEATURED . . . at WEEKS & ORR



As shown in the March SUNSET

Authentic Colonial Reproductions
Faithfully Made of Selected
Hard Mountain Maple

Lovely for Spring — A Bedroom in True Colonial Maple

- The entire group shown above . . . \$414.50
- Head Board Bed . . . \$ 89.50
- Double Dresser with Mirror . . . \$149.50
- Seven Drawer Chest . . . \$ 95.00
- Night Stands, each . . \$ 26.50
- Comb Back Chair . . . \$ 27.50

Here are the bedroom furnishings you've had your heart set on. Designed with painstaking care to reproduce in detail the graceful characteristics of early American Colonial and built to last generations, Flint Ridge Colonial Maple is the ultimate in good taste and comfort.

Flint Ridge Maple Headquarters

WEEKS & ORR

SOUTHERN OREGON'S OLDEST AND LARGEST FURNITURE STORE

YOUR CREDIT IS GOOD HERE! OPEN YOUR ACCOUNT TODAY!

Now's the time to invest in Quality Furniture!

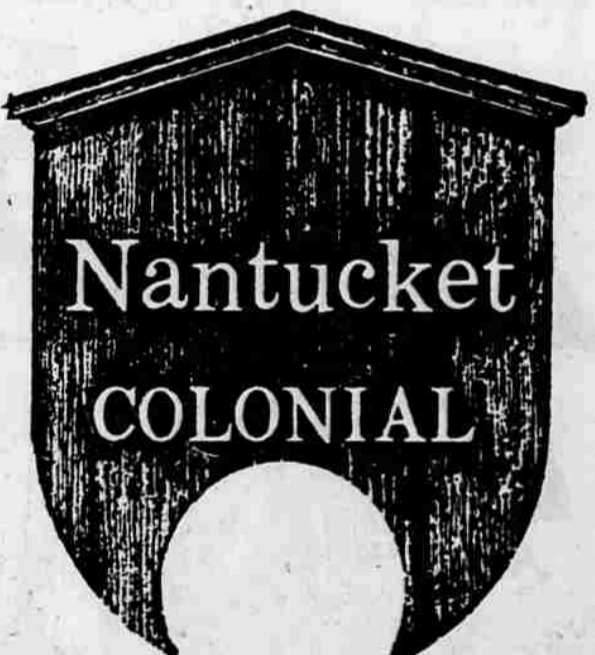
AND YOU'LL FIND OUR FINE NEW

MAPLE FURNITURE

SO EXPENSIVE LOOKING . . . SO MODERATELY PRICED! CHOOSE from SOUTHERN OREGON'S LARGEST STOCK . . .

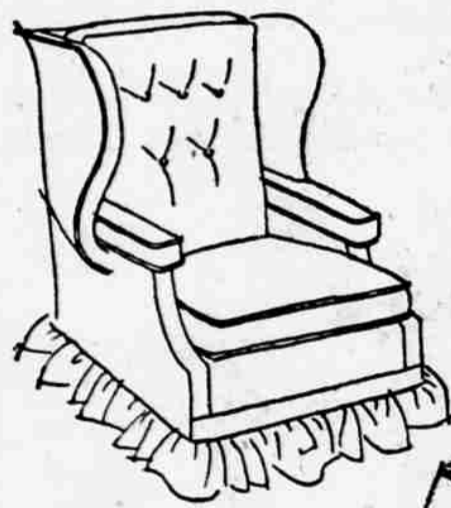
Be Sure To See the NEWEST In . . .

NANTUCKET MAPLE



Don't put your dreams away for another day! See the new groupings of enchanting Colonial Maple furniture . . . so skillfully fashioned . . . so charming to look at . . . so surprisingly moderate in price—NOW at Weeks & Orr . . . A wonderful combination of the convenience of today—the time-enduring charm of yesterday.

NANTUCKET WING LOUNGE CHAIR



\$142⁵⁰

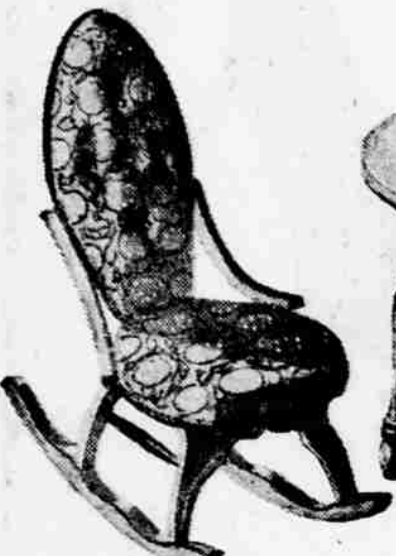


LOVE SEAT \$99⁵⁰

Wagon Seat Cocktail TABLE . . . \$29⁷⁵

STEP TABLE \$29⁷⁵

Beautiful NANTUCKET ROCKER



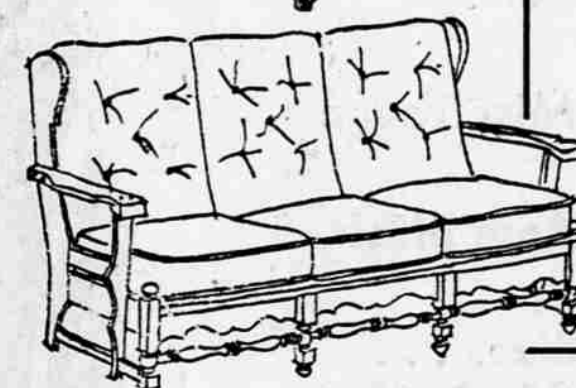
\$34⁵⁰

TABLE



\$21⁷⁵

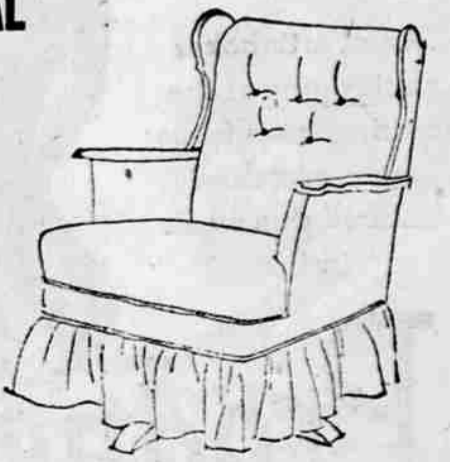
NANTUCKET COLONIAL SOFA



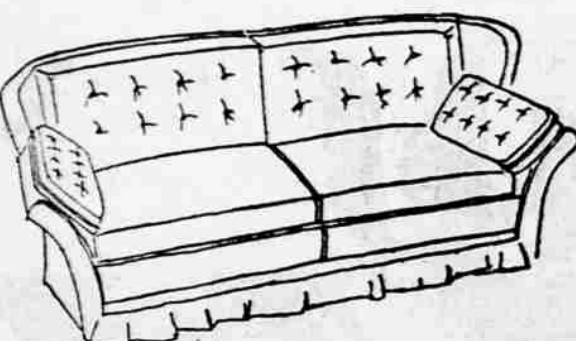
\$139⁵⁰

NANTUCKET COLONIAL SWIVEL ROCKER

\$99⁵⁰



NANTUCKET COLONIAL WING SOFA



\$270⁰⁰

SOUTHERN OREGON'S FINEST MADE DISPLAYS!
SEE OUR WINDOWS

NO INTEREST or CARRYING CHARGES AT WEEKS & ORR'S!

