

## Hatred of Communism Smoulders in Czechoslovakia Western Reporters Find on Visit; Red Grip Tight

By ROBERT BRANSON  
United Press Correspondent  
Brno, Czechoslovakia—(U.P.)—Hatred of Communism smoulders openly here behind the Iron Curtain, but there is little evidence that the Red dictatorship is losing its grip.

Brno (pronounced Bruno) is Czechoslovakia's second largest city. For the first time since the Communists seized the country in 1948, a group of Western reporters was allowed to come here the past week end.

Officially they came to report a soccer game between Austria and Czechoslovakia, but they

were able to roam the streets and talk freely to Czechs—in restaurants and stores, in state-run "night clubs," on street cars, on the teeming sidewalks around the Red-starred Hotel Grand.

**Czech Resents Communism**

A comparison of notebooks shows the Westerners agreed on these impressions:

The average Czech resents living under Communism—and many speak with a bitter frankness that is startling—but does not believe the regime is in imminent danger of economic collapse or revolt.

There is plenty of food in the

state-run groceries and restaurants, including meat, eggs and even chocolate Easter eggs. Side-walk stands do a brisk business in sizzling sausages, cotton candy and chocolate-coated ice cream.

The population is starved for entertainment. Queues start forming at dusk outside the "Bolero," the "Roxy" and half a dozen other "people's religious centers" that pass as nightclubs.

Religion is alive. Every seat was taken this morning at two downtown Roman Catholic churches, St. Thomas and St. Jacobus, and other worshippers stood at the back and in the aisles.

The Czechs are better clothed and shod than their Hungarian neighbors. Women wear make-up, but their hair styles look drab and old fashioned.

Automobiles are such a rarity that a row of mud-spattered cars driven by Western newsmen drew thousands of Czechs to the

curbs fronting the Grand hotel. Brno streets are almost bare of traffic and you have the country highways to yourself except for an occasional army truck.

Propaganda takes the place of Western advertising. White "peace" doves and Communist slogans decorate the Brno football stadium and every public building. Powerful olive drab loudspeakers are rigged at city street corners and in villages to drum the spoken message into every ear.

Three faces peer down at you from the walls of public rooms—Nikolai Lenin, Josef Stalin and Czech President Antonin Zapotocky.

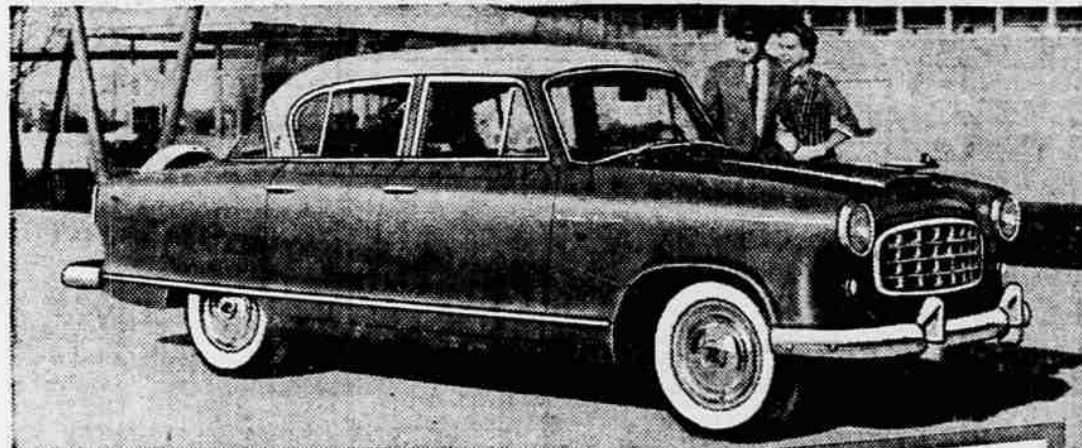
The word that blares most

### Subscribers

To report improper or non-delivery of the Mail Tribune phone 2-6141 before 6:45 p.m. daily and 10:30 a.m. Sunday.

If regular delivery arrives shortly after you call please notify office thus eliminating special messenger service.

### FIRST IN TRAVEL COMFORT-HANDLING EASE-SMARTNESS-YET COSTS LEAST TO BUY AND RUN!



Think of it—you pay America's lowest price when you buy a Rambler. You get easiest handling... most miles a gallon... the best ride in its field—and higher resale value, according to figures published by a leading business magazine. Be smart... see, drive—buy a Rambler.

AT YOUR **Nash** DEALER  
THE NEW IDEA 1955  
**Rambler**

SURROZ NASH—Fifth & Bartlett—Medford 2-6185  
Hey Folks! Tune In Disneyland. See TV listings for Time and Channel

USE TRIBUNE WANT ADS!

## Lava Flow Hits Sea; Steam Spirals Upward

Pahoehoe, Hawaii—(U.P.)—Clouds of steam spiraled hundreds of feet into the air today as two streams of fiery lava from restless Kilauea volcano spilled over a 50 foot cliff into the sea.

The flow was fed by an outburst approximately three miles up the slope in the vicinity of a dead crater known as Iilewa. Kilauea is now ending its first month of activity.

Sunday night the main flow of lava broke into two fingers as it neared the coast. One hit the sea shortly after noon yesterday, slicing through the 217 acre farm of independent planter Robert Yamada. The second finger toppled into the sea from the same cliff five hours later.

Yamada's farm, where 80 acres had been planted with young coffee trees worth \$40,000, was

saved from last week's series of eruptions by six earthen and rock dikes which diverted the flow.

The first entrance of lava into the sea was made March 16 when the flow reached the water near Kamalii, forming a new peninsula.

Since Kilauea broke its 115 year silence, nature's fireworks have been disastrous as well as spectacular.

Nine homes have been wiped out and lava has covered an estimated 4,000 acres, including farm and timber lands, and has caused millions of dollars worth of destruction.

In addition the activity has forced some 500 Puna residents to be evacuated and has caused extensive damage to primary and secondary roads.

## Washington Trio Die in Plane Crash

Leggett, Calif.—(U.P.)—Three persons from Bellevue, Wash., were killed instantly yesterday when their single engine private plane struck a pine tree and crashed down the side of a canyon.

Civil Aeronautics Authority in Seattle identified the victims as Nealon A. Thompson, a Northwest Airlines pilot, his wife, Eunice, and Peter David, a friend.

The small plane landed on the private airstrip of the Pacific Coast Lumber Company in northern Mendocino County just before the crash. Thompson said he was lost and asked for directions.

A company employee said the plane then attempted to take off from the hilltop field, but struck a tall pine tree at the end of the runway and crashed down the mountainside, disintegrating as it went.

Part of the wreckage landed in the Eel River, some 500 yards down the mountain.

All three victims died instantly, the witness said.

An airport spokesman at Bellevue said Thompson took off Sunday with his two passengers for a "long trip."

## Radio Operators' Strike Threatened

San Francisco—(U.P.)—CIO radio operators have threatened a strike against Pacific Far East Lines unless that company promises not to give radio jobs aboard its ships to members of the AFL Sailors Union.

This threat was delivered yesterday by Philip O'Rourke, vice president of the American Radio Association. He said:

"We will deliver a 24-hour ultimatum to Pacific Far East Lines Tuesday morning. If they do not guarantee us complete protection against back door agreements, we will strike on Wednesday."

By "back door agreements," O'Rourke was referring to a plan by Harry Lundeberg, secretary of the sailors union, to place members of the AFL maritime unions exclusively aboard ships carrying bulk cargoes.

Shipowners ordinarily negotiate contracts with seven maritime unions, including the CIO radio operators and CIO Marine Engineers.

## Visitors To Roosevelt's Hyde Park Home Decline

Hyde Park, N. Y.—(U.P.)—Visitors to the home of the late President Roosevelt at Hyde Park decreased by about 10 per cent in 1954. A total of 277,252 persons toured the site, 14,022 fewer than in 1953.

During the same period attendance at the nearby Vanderbilt mansion—operated by the National Park Service in conjunction with the Roosevelt memorial—declined four per cent to 198,755.

**BARGAINS GALORE . . . STORE WIDE!**

# END-OF-MONTH CLEANUP

**Hurry Down To Penney's Tomorrow!**

**WE'RE REALLY CLEANING HOUSE! . . . All Odds and Ends, Slow Sellers and Discontinued Lines Go On the Chopping Block. . . All Perfect Quality Merchandise . . . But We Don't Want It Around Any Longer. Come in at 9:30 Tomorrow and Take Advantage of These Drastic Reductions . . .**

**LOOK FOR ODDS AND ENDS - - Tables in Every Department - Sensational Savings!**

- 100 ONLY **WOMEN'S LEATHER CLUTCH PURSES**—If you don't believe it—come see 'em! Plus Tax 10¢
- 150 PAIR **BETTER DRESS SHOES FOR GIRLS**—Patent, Suede, 8 1/2-3 . . . Wow! A Steal At . . . . . 2.00
- 100 ONLY **WOMEN'S BETTER BUTCHER RAYON SKIRTS**—Plains, Prints . . . A Giveaway At . . . . . 1.99
- 60 ONLY **WOMEN'S BETTER COTTON PLISSE HALF SLIPS**—Look At This Price! . . . . . 1.00
- 250 ONLY **WOMEN'S BETTER COTTON CASUAL BLOUSES**—Cut To the Bone! . . . . . 88¢
- 300 PAIR **PERFECT QUALITY NYLON HOSE**—51 Gauge 15 Denier . . . A Penny Special . . . . . 2/1.00
- 60 ONLY **WOMEN'S BETTER COTTON PLISSE GOWNS OR PAJAMAS**—A Real Value, Hurry! . . . . . 1.77
- 25 ONLY **WOMEN'S BETTER ORLON CARDIGAN SWEATERS**—Look At The Price! . . . . . 3.00
- 50 ONLY **FOAM RUBBER FATIGUE MATS**—18" x 24" — A Penney Super Bargain! . . . . . 1.00
- 75 PAIR **BETTER SHEER CAFE CURTAINS**—These Are A Real Buy! . . . . . Per Pair 1.00
- 70 ONLY **GIRLS BETTER NYLON CAN CAN SLIPS**—Sizes 2-12 — A Real Easter Savings! . . . . . 88¢
- 100 PAIR **GIRLS RAYON AND COTTON PANTIES**— Sizes 8, 10, 12 Only But Look At The Price! . . . . . 23¢
- 300 PAIR **WOMEN'S BETTER NYLON PANTIES**— A Real Penny Special! . . . . . 50¢
- 40 ONLY **MEN'S BETTER FLANNEL SPORT SHIRTS**—Slashed to Clear, What A Buy! . . . . . 1.00
- 50 PAIR **MEN'S BETTER RAYON GABARDINE SLACKS**— Better Stock Up At This Price! . . . . . 4.00
- 100 ONLY **MEN'S BLUE CHAMBRAY WORK SHIRTS**—14 1/2-17 — A Penney Super Special! . . . . . 88¢
- 33 PAIR **MEN'S SANFORIZED WAIST OVERALLS**—Believe It or Not! . . . . . 99¢
- 600 YDS. **BETTER YARDAGE** From Our Regular Stock—Drastically Reduced To Clear . . . . . Per Yard 38¢
- 30 ONLY **WOMEN'S BETTER DRESSES**— Deeply Cut — Out They Go! . . . . . 5.00
- 65 ONLY **MEN'S SANFORIZED BROADCLOTH PAJAMAS**— A Penney Special! . . . . . 2.44
- 70 PAIR **MEN'S GOVERT WORK PANTS**— Here's A Real Value, Better Hurry! . . . . . 1.75
- 84 PAIR **BOY'S SANFORIZED FADED DENIM SLACKS**— Blue, Green 6-16 —This Is A Hot One! . . . . . 1.88
- 30 PAIR **WOMEN'S BETTER CASUAL SHOES, Oxfords, Sandals**— Out They Go! . . . . . 3.00
- 30 ONLY **WOMEN'S BETTER DRESSES**— These Have Been Cut To The Bone! . . . . . 3.00
- 150 ONLY **MEN'S BETTER SPORT SHIRTS**— Dan River Fabrics — What A Value! . . . . . 2.00
- 50 ONLY **TOODLERS 2-PC. PLISSE PAJAMAS**— Sizes 1 1/2-2 — Hurry For This One! . . . . . 50¢
- 50 ONLY **CRIB SIZE FITTED SHEETS**— Fits 6 Yr. Crib — This Is A Real Buy! . . . . . 88¢
- 100 PAIR **BETTER EMBROIDERED PILLOW CASES**—Standard Size — Sensational Value! . . . . . 1.00 Pr.
- 60 ONLY **FOLDING METAL BRIDGE CHAIRS**— A Penney Special! . . . . . 2 for 5.00
- 40 ONLY **BETTER FOLDING CARD TABLES**— Metal Legs — A Real Savings . . . . . 5.00
- 30 PAIR **BOY'S THICKSET CORDUROY BOXER SLACKS**— 2-8 — Deeply Cut! . . . . . 1.50
- 100 ONLY **WOMEN'S BETTER BILLFOLDS**— Lots of Compartments — A Real Buy! . . . . . Plus Tax 88¢
- 120 ONLY **MEN'S BETTER KNIT POLO SHIRTS**— Collar Styles — A Factory Closeout! . . . . . 1.44
- 45 ONLY **BOY'S BETTER LONG SLEEVE SPORT SHIRTS**— Reduced To Move Fast! . . . . . 1.00
- 18 ONLY **BOY'S BETTER CASUAL JACKETS**— You Musn't Miss This Value! . . . . . 1.99
- 75 ONLY **SHREDDED LATEX PILLOWS**— Standard Size — What A Savings! . . . . . 1.77
- 100 ONLY **EVERLON PANELS**— No Ironing — Just Wash and Hang — A Penney Special! . . . . . 1.00
- 36 ONLY **BOY'S BETTER GAUCHO POLO SHIRTS**— Drastically Reduced! . . . . . 50¢
- 200 PAIR **MEN'S BETTER COMBED COTTON DRESS SOCKS**— Better Stock Up Now! . . . . . 3 Pr. 1.00
- 25 ONLY **WOMEN'S BETTER SPRING COATS**— 100% Wool, Long Styles — Cut To the Bone . . . . . 12.88

Hundreds of Other Items Too Numerous To Advertise -- Look for Them -- and Save!

## CITY APPLIANCE INC.

are proud to announce . . .

They Are "EXCLUSIVE DEALERS" for  
"Harder-Freeze" HOME FREEZERS  
For This Territory

*The Golden  
Leisure Line*

**LAST WORD in freezer  
beauty...and convenience**

Easier inventory, with Chalk-Up Chart! Easier juice storage, with Jiffi-Juice Racks! Easier packaging, with Packaging Pantry! These and many more features are yours with Harder-Freeze—the freezer that's 9 ways easier! Find one more above the new Golden Leisure Line . . . whisper-quiet, fanless operation . . . superb new styling . . . amazing savings! Come in today and see for yourself!

**SPACE-SAVING UPRIGHTS**

- All new modern styling! • Chalk-up Chart! List freezer contents with pencil . . . rub clean with eraser • Packaging Pantry! Handy, swing-out bin for storage of all wrapping materials • Jiffi-Juice Racks. Hold 16 frozen juice cans—always at your fingertips! See many other features! Upright Models in 15, 20, 25, and 35 cu. ft. capacities.

15 FOOT	<b>\$507<sup>95</sup></b>
20 FOOT	<b>\$586<sup>95</sup></b>
25 FOOT	<b>\$599<sup>95</sup></b>
35 FOOT	<b>\$799<sup>95</sup></b>

**HARDER-FREEZE HOME FREEZER**  
*The freezer that's 9 ways easier!*

## CITY APPLIANCE INC.

Across from Penney's  
127 North Central Phone 3-5743

Buy At **Builders Supply**

**QUALITY BLOCKS**  
Bricks, Flues  
Drain Tile  
727  
W. McAndrews  
Phone 2-4107