

Old World Continues To Amaze America With Three-Wheeled Autos, Caddiemobile

New York — (U.P.) — The old world will never cease to amaze us Americans in the new world. Who would have thought that for one show they'd send us such items as a three-wheel auto with a plexiglass top and a gasoline appetite of only one gallon every 102 miles.

A caddiemobile that carries five golfers and between holes serves them coffee, provides them an electric shaver, and has trays that swing into place over their laps.

A variety of powered scooters, including a just-invented Parisian one that folds up into a package 14-by-17-by-27 inches but when unfolded can scoot at 47 miles per hour.

A pair of loaded Roman dice (used, presumably, by loaded Romans).

This choice blend of old and new will be served up along with more than 100 sport cars and various scenes of European glory at the annual Travel and Auto Sports Show opening this week at Madison Square Garden.

Famous Builder

The auto with the transparent top is built in Germany by the Messerschmitt people, who use the same stuff for the top that they used for cockpit canopies in their World War II planes. A one-cylinder engine powers the single drive-wheel in the rear-cruising speed, 55 mph.

The auto is a midget. It's nine feet, three inches long, but the heavy gauge steel body is only a yard wide. The two front wheels have flaring fenders that make the overall front width four feet. It holds one passenger, who sits directly behind the driver. In a demonstration ride this reporter found his knees conflicting anon with the driver's elbows. Retail price \$895.

The caddiemobile is made in Germany, too. Sells for \$1,000. Fitted with collapsible umbrella and electric outlets for the coffee-maker also of German make.

Farmers Urged To Protect Cattle

Chicago — (U.P.) — The American Veterinary Medical Association urges farmers to protect their cattle from cold weather diseases.

The association said sick animals are unprofitable, and offered these "winterizing" tips: Calf quarters should be cleaned and disinfected before animals are brought in from pasture.

Broken windows should be replaced and other sources of chilling drafts plugged or repaired.

"It's also a good idea to paint or whitewash the walls to discourage the breeding of parasites and germs," an AVMA official said. "Care should be taken not to use paints containing lead or other toxic substances which the animals may lick off."

Cattle, especially calves, should be fed on a regular schedule to eliminate intense hunger which often is followed by over-eating and indigestion.

Salt should be supplied on a free-choice basis rather than including it in the ration.

Animals should be turned out daily for exercise except during storms or extreme cold.

Human Tourniquet Saves Life of Girl

St. Louis, Mo. — (U.P.) — A 11-year-old girl, saved from death by her brother who acted as human tourniquet, is resting in county hospital here.

Officials said Everett G. Woodland, 14, probably saved his 11-year-old sister, Susan, from bleeding to death.

The girl cut her arm when she accidentally thrust it through the glass door of a china closet at their home Friday. Police said Everett quickly clamped his hands over the deep gash and held the grip until a neighbor rushed them to the hospital.

Hospital physicians said the boy's make-shift tourniquet probably saved Susan's life.

Balanced Budget, Lower Taxes, Said Possible

Chicago — (U.P.) — Secretary of the Treasury George M. Humphrey says "there is no reason why we can't have both a balanced budget and lower tax rates." Provided world conditions continue to improve.

He told the 48th annual convention of the National Canners association the government "will keep trying to cut spending further."

"At the same time," he said, "our expanding economy can provide greater tax income even at lower tax rates" because there will be more business and personal income to tax.

Raw CHAFED SKIN
Cleanse well with Resinol Soap and apply lanolin-rich Resinol. Relief is fast and comfort lasts.
RESINOL OINTMENT and SOAP

and shaver. The tear collectors and Roman dice are in the private archaeological collection of Dr. Paul Ilton, who will display objects used by people of biblical times which he has dug up in Holy Land countries.

Slightly Loaded
The dice, together with a bronze dice box, were found in the tomb of a Roman captain who lived about the time of Christ. Made of human bone, they're loaded so as to come up most times on one and six.

The tear bottles were used in the period 300 B.C. to 300 A.D., Dr. Ilton said in an interview. He held one about 3 1/2 inches long, with a narrow body, to a corner of his eye.

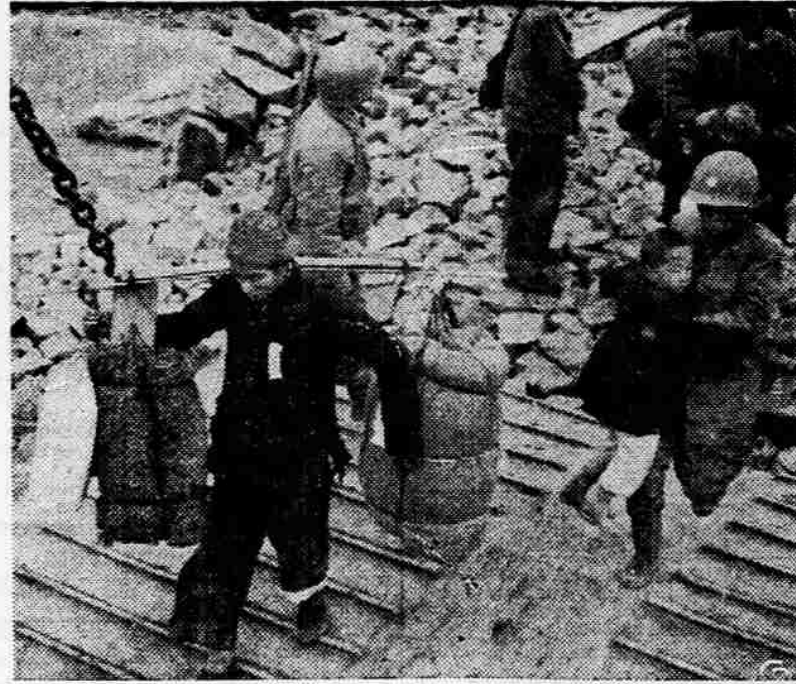
"In ancient times when some-

body died, people held this to their eye and tears of mourning poured in. They closed the bottle with a piece of pottery and put it in the tomb, and by the number and fullness of the bottles the affection for the dead person could be measured. Today, everything goes into a handkerchief, and then it's over."

The joy-tear bottles 100 B.C.-100 A.D. have flaring bodies and were used by a woman to collect her tears of joy "The day she got her husband."

"She would put the bottle in a hiding place," Dr. Ilton said. "Then, whenever she had a quarrel with her husband she'd take it out and say: 'Never mind. Once I was happy with the guy.'"

"I think we should have them today."



ONE CARRYING his belongings on traditional bamboo pole, another with youngster clinging to him. Chinese Nationalists climb ramp of landing craft to complete withdrawal from Tachen Islands to Nationalist stronghold on Formosa. (International)

Monday, February 21, 1955

MEDFORD (OREGON) MAIL TRIBUNE—THREE

Administration Accused Of Encouraging Monopoly

Chicago — (U.P.) — Sen. Estes Kefauver (D-Tenn.), has accused the administration of encouraging monopoly.

The Tennessee Democrat said the administration "is guilty both by commission and omission of encouraging the monopoly system which is eating away at the very roots of free enterprise."

He called President Eisenhower "naive" for ordering the Dixon-Yates power contract to be signed.

Kefauver is a member of the Senate Monopoly Investigating subcommittee. His remarks came in a speech prepared for the National Food Brokers association.

Dead line Sunday Classified is at noon Saturday; 10 a.m. Monday for Monday; other days 5:30 previous day.

Gruenther Predicts Arms for West Germany

Washington — (U.P.) — Gen. Alfred M. Gruenther, supreme allied commander in Europe, said he believes West Germany ultimately will become an armed member of the European defense system.

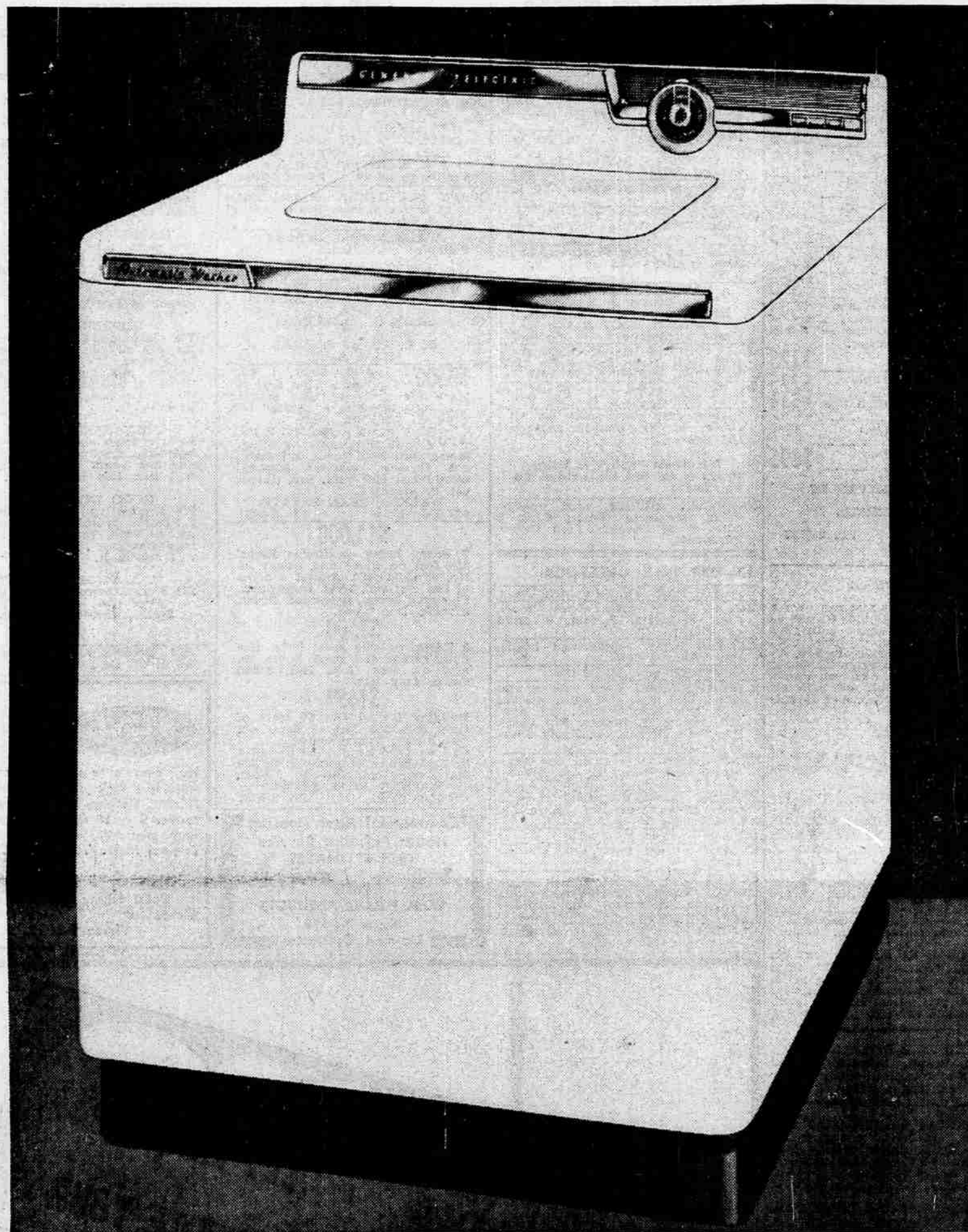
The general arrived here by air and after chatting briefly with newsmen went to the White House to "pay my respects" to President Eisenhower. He said he had "nothing special" to report to the president.

The term set for the president of the Confederate States of America was six years.

WE CAN SUPPLY YOUR Glass needs

We Accept Insurance Claims

Selby GLASS CO
303 N. BARTLETT
PHONE 3-3613



This GENERAL ELECTRIC Automatic Washer—

CLEANS and RE-CLEANS WASH WATER TO GIVE YOU CLEANER CLOTHES!

G.E.'s New Filter-Flo Washing System removes lint, sand and soap scum!

HOME APPLIANCE

AUTHORIZED DEALER
GENERAL ELECTRIC APPLIANCES

115 EAST MAIN

BARGAIN STORE
303 SOUTH FRONT

As A Means of Introducing A Brand New Way of Washing Clothes We're Offering - - -

BIGGER TRADE-INS!

HERE'S HOW WE CAN DO IT

We have a COMPLETELY EQUIPPED RECONDITIONING PLANT in conjunction with our BARGAIN STORE at 303 South Front street where used appliances are repaired and rebuilt from the smallest working parts to shiny new baked enamel finish. Volume business plus newest equipment and know-how spells savings in this reconditioning operation. Our BARGAIN STORE makes quicker sales possible. Our savings are passed on to YOU as BETTER DEALS when you trade-in for new G.E. appliances!

Come In!

JUST WATCH A DEMONSTRATION OF THIS New GE Automatic Washer

GET A PACKAGE FREE!

CASE OF 24 PACKAGES OF TIDE WITH THE GE WASHER YOU BUY!

Here's a Dream Come True!

for every woman who has wished she could change wash water as soon as dirt and lint show up.

This new General Electric washer circulates and filters the water at the rate of six gallons per minute . . . to give you whiter, brighter clothes.

As the Filter-Flo System circulates the water, sand, settles out the bottom, soap scum floats away and lint is trapped in the filter which lets only cleansed sudsy water flow back into the washbasket.

Big capacity, too! This G-E has 50% more clothes capacity than many other automatics. You're not forever splitting a big wash into two separate loads. And the Water Saver Control lets you select any water level from 17 down to 11 gallons of water for small washes.



NOTHING DOWN!

TOO — ON APPROVED CREDIT