

117 S. Central

Montgomery Ward

Phone 2-6241

WEEK-END SPECIALS



SECOND TERM FOR IKE—Republican National Chairman Leonard Hall tells reporters at the White House that he still thinks President Eisenhower will be available for a second term.

On The Side

By E. V. Durling

(Distributed by King Features Syndicate, Inc.)

To love, to believe,
To hope, to know;
Tis that delightful transport
below!
Tis that rightful transport we
can feel.
Which painters cannot paint nor
words reveal.
Nor any art we know of can
conceal.
—Waller.

What state has the highest percentage of elderly automobile drivers? Some say it is California. Others claim it to be Florida. I think it is Florida. I recall it being reported that recently in Palm Beach, Fla., an 81 year old man driving a 1925 Ford collided head on with an 83 year old man driving a 1923 Ford.

Asides
Queries from clients. Q. Do you recall a dance team billed as "Eleanora Hughes and Maurice?" A. No sir. However, one of the greatest of all ballroom dance teams was that of Maurice Mouvet and Florence Walton, who were billed as "Maurice and Walton." They were rivals of Mr. and Mrs. Vernon Castle. Many dance enthusiasts thought them more accomplished than the Castles.

Understanding Women
The University of London, Greer Garson's alma mater, now has a course for men on "How to Understand Women." Certainly a step in the right direction. Greer should volunteer to deliver a lecture at her alma mater on how to understand a red-haired woman. However, it is doubtful she will. Red-haired women want to remain a mystery to the male. They want to be loved, not understood.

Office Wives
What's your secretary's speed rating? Record for typing is 135 words a minute. For stenographic dictation, 250 words a minute. Speed ratings are figured on basis of records. If your girl Friday can type at the rate of 100 words a minute her speed rating is about 85. If she can take dictation at 200 words per minute her speed rating is 87. As a stenographer-typist, her combined speed rating would be about 86. How about clocking

your charming amanuensis tomorrow?

Unmentionables
Note a reference to "what grandma called unmentionables. Whose grandma? There is probably not a grandma alive today who recalls having used the term "unmentionables" in her youth. That was used in the days of your great-great-grandma. It is just about 100 years ago that Sarah Josepha Hale, then editor of Godey's Lady's Book, campaigned for discarding the term "unmentionables" in reference to intimate feminine attire and using in its stead the French term "lingerie."

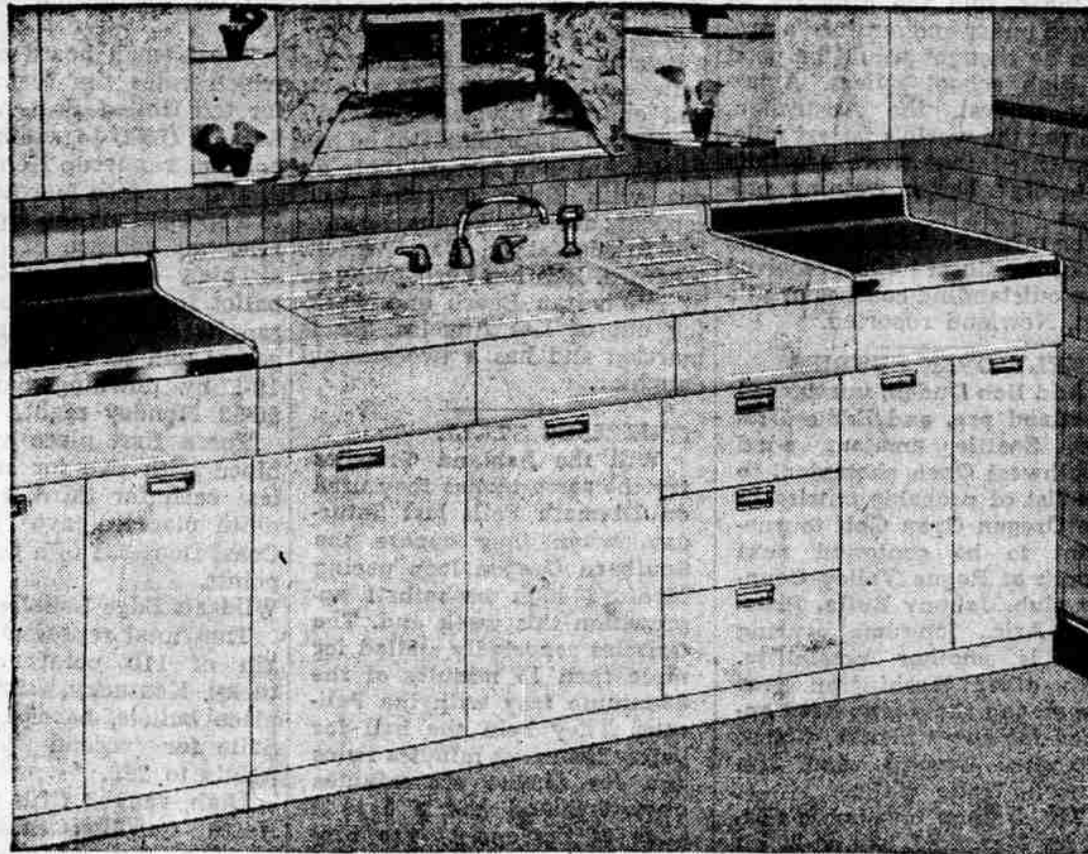
Record for variety of pets kept in one New York City apartment is held by Fannie Hurst. At one time, Fannie harbored in her apartment six dogs, two cats, two monkeys and fourteen birds. . . . When Dempsey floored Tunney for that "14 count" in their Chicago meeting, it was the first time Gene had ever been floored in his long ring career.

Art Lesson
A surprising number of those who flatter themselves as having a knowledge of art can't even correctly pronounce the name of Vincent Van Gogh. How about you, sir? . . . In this country over 7,000,000 persons are on government payrolls. This is an all time high. It includes Federal, State, city and county governments.

Drinkers
The world's most durable drinkers are the Dutch. A Hollander thinks nothing of drinking eight gins before dinner. After dinner he switches to whisky and brandy. Yet an inebriated person is rarely seen on the streets of any city in Holland. The Dutch really know how to handle their liquor.

WEATHER By United Press
Northern California: Variable cloudiness; local morning fog; little change in temperature.

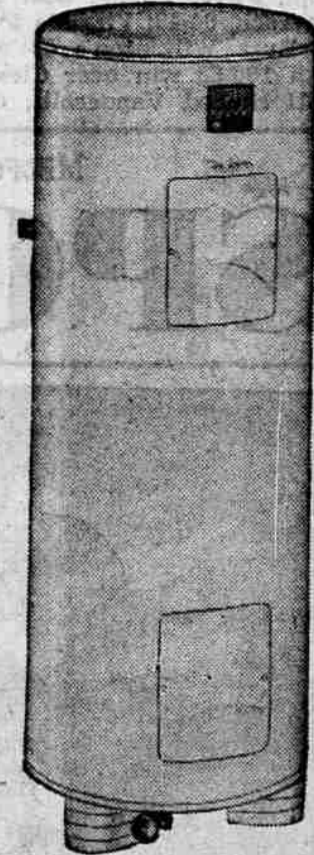
Dead line Sunday Classified is at noon Saturday; 10 a.m. Monday for Monday; other days 3:30 previous day



REG. 314.64
STEEL KITCHEN
276.88

Ask about FHA Terms. Beautiful, all-steel Kitchen Center — sale-priced. Includes Deluxe 54-inch Cabinet Sink with chromed faucets, plastic spray and basket-type strainer; 2 Wall and 2 Base Cabinets (all 24" wide), 2 Vinyl or Formica Counter Tops in choice of colors.

Reg. 345.43 Steel Kitchen with 66" Cabinet Sink 306.88



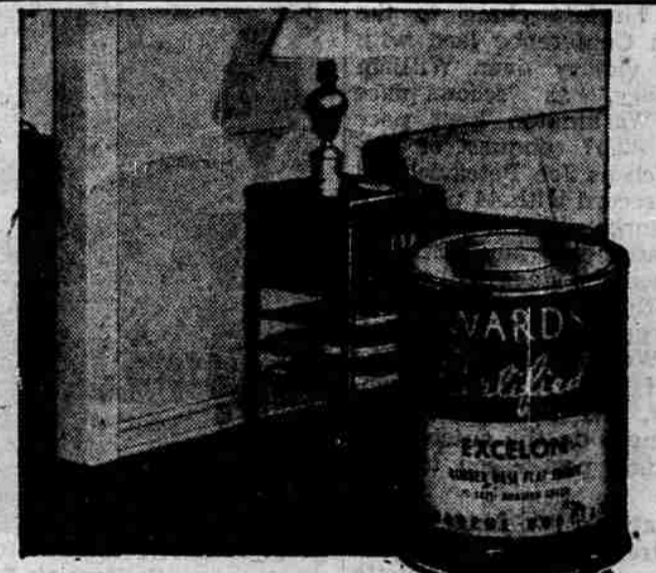
REG. 89.95
WATER HEATER
82.88

Electric model, with large 40-gallon capacity. Completely automatic action. A real value at this low sale price. Fiberglass insulated to retain heat; cut operating cost. Double element for greater efficiency. Sold under Wards 5-year Protection Plan. UL approved.



SALE—DECORATIVE
METAL PANTRYWARE
35% OFF

Buy now—save 45c to 70c on "Fruit Fiesta"—Wards own designed steel pantryware. Gay fruit pattern on white background; won't chip, peel. Red lids, trim. Choose one or all:
Reg. 1.29 Basket 84c
Reg. 1.79 Pail 1.09
Reg. 1.69 Can Set 1.09
Reg. 1.79 Bread Box 1.09



SALE—EXCELON FLAT PAINT
Quart **97¢** Gallon **3.33**

Reg. 1.09 and 3.95. Excelon gives you a permanent, petal-smooth finish for your walls and woodwork. Rubber-base makes Excelon really scrubbable. Dries in one hour. Choice of lovely pastels.



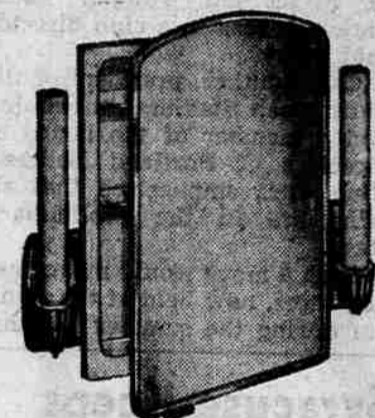
REGULAR 2.19
CLAW HAMMER
1.88

Save now at Wards on this quality Claw Hammer. Polished forged steel head, smoothly finished hickory handle.



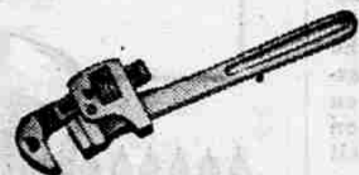
REGULAR 1.59
SET 3 PANS
1.00

Save! Extra strong mirror-finished 20-ga. aluminum. Measuring marks on each saucepan — 1, 2 and 3-qt. sizes.



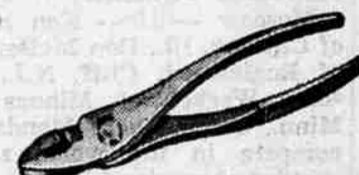
REG. 27.50
BATH CABINET
23.88

\$2.50 down on Terms. Recessed type with incandescent lighting. 16x22" mirror. Electrical outlet. 2 shelves.



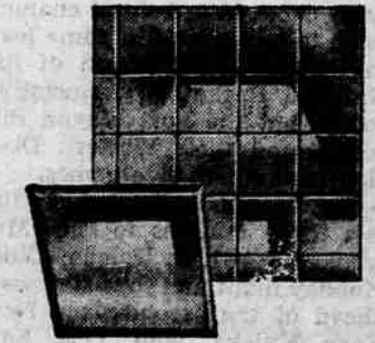
REGULAR 2.55
PIPE WRENCH
1.99

14-in. Sillson Pattern. Malleable frame gives added strength. Drop-forged hard steel jaws. Takes 1 1/4-in. pipe.



REGULAR 1.19
COMBINATION PLIERS
97¢

Wards Better Quality. 6-inch pliers with wire cutter. 2-position slip joint. High carbon steel—chrome-plated.



PLASTIC
TILE KIT
Reg. 27.98

Everything needed for around the tub installation. Tile, Cement, Wax, Tools, and instructions.
25.88



REGULAR 2.79
SOCKET SET
1.99

11-pc. carbon steel set. 1/2-in. drive parts; 8 sockets 3/4 to 1 1/4-in. ratchet, L handle, and handy case.



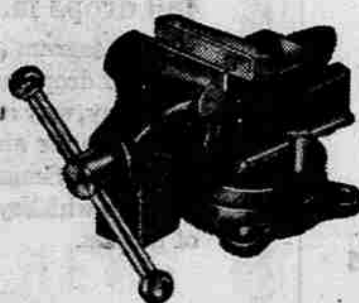
REGULAR 7 1/2¢
ROMEX TYPE CABLE
5 1/2¢ ft.

Non-metallic indoor Cable. Two-wire No. 12. Easy to use—strips clean, bends easily.
14/2 Cable 4¢ ft.



REGULAR 4.98
SUPER FLOOR ENAMEL
3.83 Gal.

Protects your floors against hard day-by-day foot-wear. For linoleum, wood, metal, brick.
QT., reg. 1.48 1.17



REGULAR 5.79
GARAGE VISE
5.09

For use in garage, workshop. Cast-iron . . . serrated steel face jaws. 3 1/2-in. jaws open to 3 3/4-in. Takes 1-in. pipe.



PORCH AND DECK PAINT
1.17 Qt.

Protects wood, metal and brick from hard wear, weather and water. Dries overnight. Colors. Gallon 3.83



TWO FOR ONE SALE
2.25 2 Qts.

An outstanding offer—two quarts for the price of one. Soft-sheen, washable enamel for every room. Self-sealing.

FULLY AGED
for extra enjoyment!

Bourbon
at its Best

HILL AND HILL
from Kentucky

\$2.65 RT. **KENTUCKY STRAIGHT BOURBON WHISKEY**
\$4.10 4/5 QT.

THIS WHISKEY IS 4 YEARS OLD, 86 PROOF, THE HILL & HILL CO., LOUISVILLE, KY.

BUY NOW AT WARDS LOW PRICES—ASK ABOUT WARDS CONVENIENT MONTHLY PAYMENT PLAN