

'Quoddy' Hydro Project Revival Brings Memories for Resident of Valley

H. N. Poirier Built Model of Proposal For President FDR

Many Other Jobs Done By White City Man

With the recent announcement that President Eisenhower has asked \$1,000,000 for a new study of the practicality of the Quoddy tidal hydroelectric project on the American-Canadian border at least one Rogue valley resident was stirred by close memories.

He is H. Noel Poirier of White City. Poirier constructed a miniature-scale working model of the proposed project under commission of the late President Franklin Roosevelt. The model was used for explanation purposes to millions of viewers at various displays.

The project is of interest, both from the standpoint of engineering and because of its tie with reclamation work of importance to southern Oregon residents who are currently boosting for the Talent project.

The idea of the Quoddy project was to utilize the work of ocean tides, by converting two bays into tidal pools. Incoming tides would be trapped behind locked gates, earth-fill dams, connecting islands and headlands surrounding Passamaquoddy bay and adjacent waters. The area lies both in Maine and New Brunswick, Canada.

Because of the high range of tides into the bays, with a maximum of 26 feet and a minimum of 13 feet, a head of water of about 11 feet is available, "more than sufficient to operate generating equipment continuously," Poirier said.

High Power Output
Engineers say the project theoretically could produce 20,000,000 kilowatts annually, he continued. However, under the most practical conditions, the plan would produce 4,000,000 KW a year, or 500,000 horsepower, he added.

President Roosevelt was able to have the project started. Some \$6,000,000 was spent up to 1936 out of an estimated \$42,000,000 total cost. However, opposition forced the project to be dropped. The President then turned to a program of public education to explain the project, and in 1939 called upon Poirier to make a miniature working model to scale. Poirier, a free-lance model builder at the time, set up shop at Eastport, Me., on the Quoddy site. With a crew of seven he completed the model in 10 months.

In Six Sections
It was constructed in six basic sections for portability, so it could be moved readily to different display points. The model was 14 by 28 feet, and stood three feet high. A pictorial story of points of interest around the area was on the sides. A tank and pumping system, for demonstrating the effect of the tides, was installed, as was other complex mechanisms for an accurate illustration. The scaled model represented 286 square miles of land and water.

The model was first shown publicly in the border area. In 1940 it was given a place at the New York World's fair, and shown again in 1941, and more than 4,000,000 persons were checked viewing the model, the manufacturer said.

It took a person 12 minutes to view the complete cycle of tides, with one minute representing each six hours.

To Washington
Following the fair, the model was taken to Washington, D. C., for display on the Washington monument grounds, under a canopy. About 500,000 persons were checked visiting the model there.

The history of the project goes back to 1928. The proposal as adopted by the Army engineers, was based on the plan of Dexter P. Cooper, famous hydroelectric engineer, who devoted his own money and time to development of the Quoddy, Poirier reported. Some of Cooper's projects included the Keokuk dam on the Mississippi river, Muscle Shoals and others.

Roosevelt's interest was personal, also. He spent many summers on Campobello Island at the mouth of Passamaquoddy bay. As a result of his frequent dips into the cold water of Herding cove on the island, he developed poliomyelitis, the model specialist continued.

Other Models
Beside the Quoddy scale model, Poirier has also executed others for the government. Among them are Hoover (Boulder) dam, Bonneville and Tennessee Valley authority projects. The Bonneville model was constructed to explain the operation of fish ladders over the structure to allow fish to use natural spawning grounds cut off by high dams.

structed over 56 models of housing projects. He also did models and exhibits for the U. S. Department of Labor, Public Health service and Army Medical corps.

After government work, he free-lanced, doing various production studies with models for private industry.

Wasn't Easy
Achieving a national reputation in such a specialized field wasn't easy for Poirier. His training started in the famed Child City at Mooseheart, Ill., where he learned cabinet making, electrical work, printing and numerous trades, which must be mastered to handle complex work.

Winning third place in a national model airplane contest caused him to enter the field of model airplane kit building as an early pioneer.

His big break came on a lucky hunch, he says. In 1927, while Charles Lindbergh was getting ready for a trans-Atlantic flight at the same time as several others, Poirier wrote to the Ryan aircraft company at San Diego for a three-view design of the "Spirit of St. Louis," and manufactured 100 models of the plane. He even rushed down to Roosevelt field for comparison with the real thing, before the flight.

Gamble Pays Off
The gamble paid off. When Poirier heard of Lindbergh's success, he headed for New York

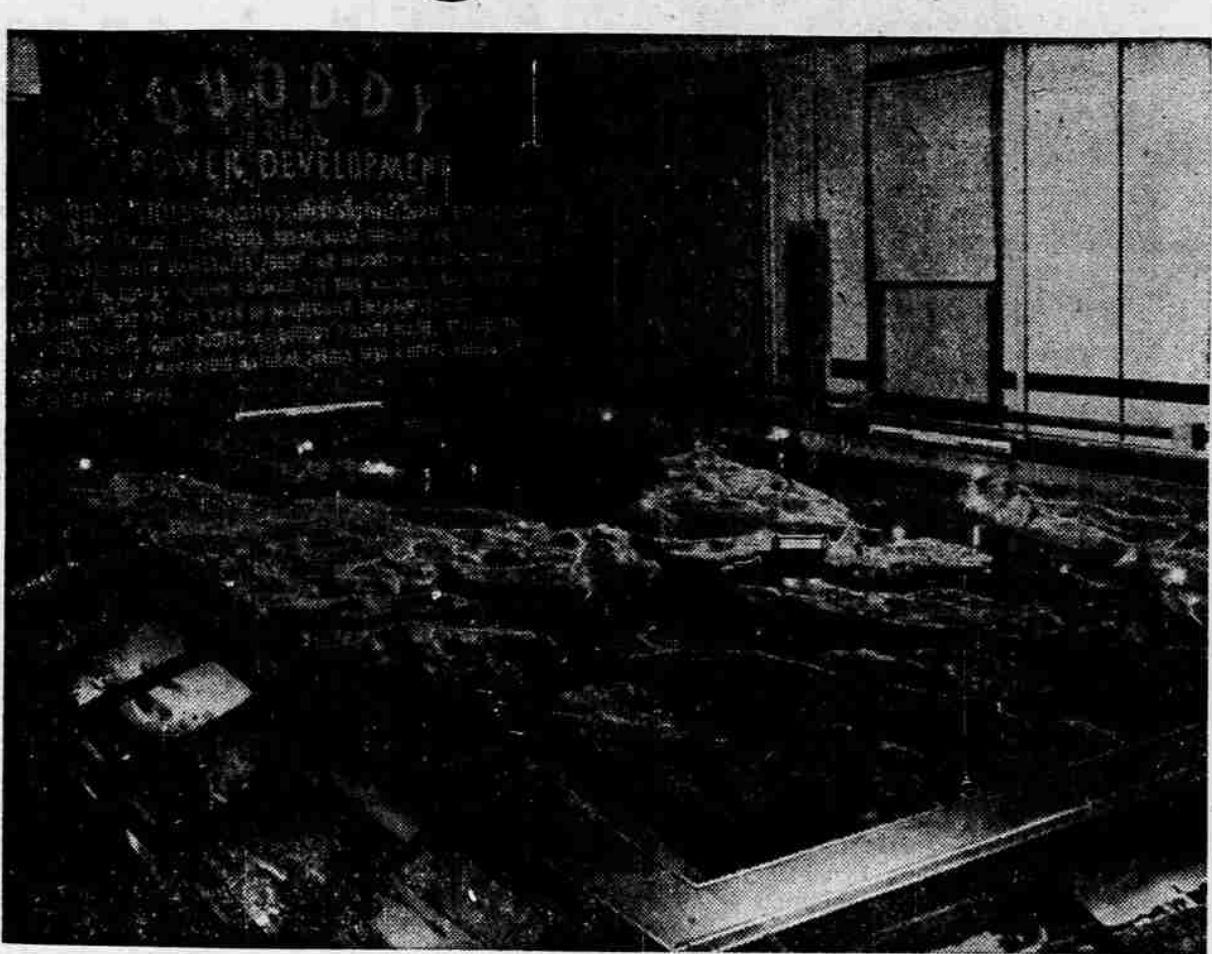
with 100 models and parked the models and himself into a hotel room. He figured he could make \$25 apiece for the planes. A resident of the same hotel changed his mind when he offered him \$100 for one. This became the price and he made his first \$10,000.

Airplane model making was to make Poirier well-known in the aviation field. Pioneers and leaders of the aircraft industry purchased Poirier models of their favorite planes. Among them were Mr. and Mrs. Lindbergh, Jimmy Doolittle, Glenn L. Martin, Amelia Earhart Putnam, Frank M. Hawks, and ships of early Byrd Antarctic expeditions.

Favorite Project
One of Poirier's favorite projects was construction of a traveling exhibit for the Mooseheart school where he was trained. This truck and trailer unit has covered the United States several times to explain the Loyal Order of the Moose's project for orphan children.

In 1947, Poirier first visited the Rogue valley to see his uncle, John Renault, who died the same year. He liked the locale, so when his health demanded a rest, he returned here two years ago.

At the present, Poirier is doing research on design for a line of items which he feels will ultimately develop into an industry for the Rogue valley.



QUODDY MODEL — Shown is the completed Quoddy model as executed under the direction of H. Noel Poirier, White City, in 1939. The model was 14 by 28 feet. It was completely equipped to show the tidal flow into the pools and use of trapped water by hydroelectric plants. During its exhibition at the New York World's fair for two seasons, over 4,000,000 persons viewed the exhibit.



COMPLEX WORK — Shown is a section of the complex work required to build a miniature working model of a huge hydroelectric project. Internal construction on the Quoddy model project required plumbing and tanks to provide a change of ocean tide cycle; electrical circuits to operate the many lights, and accurately-sawed plywood buildups, representing elevation changes. H. Noel Poirier, now a Rogue valley resident, is shown on the right with an assistant during construction of the model in 1939.

Hospital Plan Given Commendation; Board Of Chamber OKs Site

The board of directors of the Jackson County Chamber of Commerce Thursday went on record as commending the efforts of the Medford Hospital association toward the construction of a new hospital in Medford.

In the same motion, the chamber put itself on record as having no objections to the sale of city property, located on Highland drive, to the association as a site for a new hospital.

The motion passed unanimously. In discussion preceding the action, the board discussed the hospital problem in Medford, and were informed of the difficulties involved in selecting an adequate and appropriate site for such a structure. The proposed location is in the general area recommended in a recent survey conducted for the chamber by Stanford Research Institute.

The city council has been requested to make the site available to the Hospital association, which, it was pointed out, is willing to pay a fair price for the land. It was reported that up to now the council has received little information on public sentiment on the matter, and would appreciate the chamber's views.

Approve Budget
The board also inspected the proposed operating budget for the chamber for 1955, totaling \$40,000. It was unanimously accepted and approved. Chamber members wishing to obtain a copy of the budget may get it at the chamber office.

The board also approved the purchase of a folding machine for the office; reviewed the monthly financial report, and went on record as opposing social hours preceding chamber events which are not open to all members of the chamber.

Change in Ownership Status
Change in ownership status of two businesses conducted at the Medford airport was revealed last week. The firms involved are the Smith Aircraft company and the Medford Air Service.

Purchase of the Smith company from Paul R. Smith by three brothers from Ashland was announced by one of the brothers, Don George. The others are Elmont and Ralph George.

The company, previously an aircraft maintenance firm, now is being enlarged both in service and in structure. George said. Nearly completed are waiting rooms and offices that have been added to the original building, which was a large airplane hangar.

All in Aviation
All three of the brothers have been associated with aviation

Logger Notification Requirement Lifted
Salem—(U.P.)—Oregon loggers will no longer be required to notify adjacent timber owners of their intentions to log as a requirement for obtaining a forest operation permit, according to the State Forestry Department.

for about 15 years and Don George, who received his discharge from the Air Force about 1 1/2 years ago, was an instructor in flying during the Korean conflict.

In addition to the maintenance shop which they will continue, the men have added flight instruction, aircraft sales, specializing in Cessna; sightseeing flights for tourists and residents, charter work to any part of the United States, fishing trips to the coast, and hunting trips to Canada.

Future plans of Smith have not been announced. **Buys Half Interest**
Half interest in the Medford Air Service has been purchased by Kenneth Owens, 936 Grant st., Harold Conner, 208 Stark st., is the other partner in the business, which is a crop dusting service, with student flying instruction.

Owens, who has worked for the firm as a crop duster for the past several years, purchased the interest in the business from Tom Culbertson, who originated student flying instruction about 20 years ago. In 1945 Conner and Culbertson merged the business into the dusting-student business.

Valley Residents Invited To Attend SOC Foreign Films
Ashland—An invitation to residents of the Rogue River valley to view foreign language films at Southern Oregon college has been extended by Assistant Professor of Languages Dennis Hannan.

A program in French has been scheduled for March 1 at 9 a.m. and 3 p.m., Hannan said. Two films will be shown in Library room 100: "La Chevre de M. Seguiuff" and "Bateau Ivre." On March 7 at 1 p.m. and 8 p.m. a film, "Our Spanish Speaking Neighbors," is to be shown.

Monthly Program
Hannan said the Franco-American Distribution center in New York has agreed to provide a monthly program for French classes at SOC. Each program consists of a film, in French, and a series of slides dealing with various aspects of French culture.

"The films shown to date have been very good," Hannan said, "and it is believed that in the future art students and others, as well as French students, may be interested in seeing the pictures."

Hannan added that it is not absolutely necessary to understand the French commentary in order to enjoy the films. The comments on the slides are in English.

Anyone interested in seeing these films, townspeople as well as students at SOC, is invited to may be reached at Ashland 24611 to check on the schedule of the showings.

Senate President Tells Lincoln Banqueters of State Problems

Ashland—A look at state government, from the standpoint of the legislature, and a discussion of Republican chances in the 1956 election, were the themes developed by State Senate President Elmo Smith, John Day, in a talk here Friday evening.

Smith, making the main address at the 41st annual meeting of the Jackson County Lincoln club, described the problem of taxation faced by the legislature. He said that the ways and means committee is now reviewing budget requests, and is expected to come up with a report that the state will have to raise \$45,000,000 to \$60,000,000 more than it is now receiving to pay for present services.

Sees No Property Tax
He said the legislature is not apt to approve levy of a state property tax, but that it may eliminate tax loopholes for "privileged groups," may pass a cigarette tax, and, through structural changes, increase income, corporation and business taxes.

The senate president, a weekly newspaper publisher, also discussed the problem of state welfare, saying the legislature is going to strengthen requirements in the law to eliminate abuses, and tighten up the relatives' responsibility provisions, particularly those pertaining to fathers who have abandoned their families.

Opposes Preference Clause
Discussing Northwestern power and river projects, he declared himself opposed to the preference clause which requires publicly owned power-generating plants to sell energy first, and more cheaply, to public bodies.

In labor legislation, Smith said he hopes that abuses under the unemployment compensation laws can be eliminated, and the depletion of reserve funds should there be another depression.

Looking toward 1956, the official said the Republican party is now having difficulty in developing competent leadership after 20 years out of power, and that it must look for and encourage potential Republican leaders to run for state and national offices. Women of the party must do more, too, he said, and be given more responsibility in party councils.

100 Attend
About 100 persons attended the dinner meeting, held in the Elks temple here, and Harry A. Skerry Jr., president of the club, was master of ceremonies. During election of new officers, Mrs. G. Q. D'Albini was again named historian, and other officers "moved up" through the officers' chairs. First vice-president Donald B. Whalin was named president, and the other officers include Mrs. Marion L. Langley, first vice-president; Richard Reynen, second vice-president, and Robert Root, third vice-president. E. H. Singmaster was named secretary-treasurer to succeed Root.

The program opened with group singing of "America," led by Henry Enders, followed by the flag salute and an invocation by the Rev. John L. Thompson. Telegrams and letters of greeting were read by Don Whalin, and included those from Secretary of the Interior Douglas McKay, Gov. Paul Patterson, Congressman Harris Ellsworth, Secretary of State Earl Newbury, State Rep. Ed Geary, speaker of the state house of representatives; State Treasurer Sig Unander, State Sen. Phil Lowry, and Representatives E. A. Littrell and E. H. Mann.

Tributes Adopted
Edward Branchfield presented the report of the memorials and resolutions committee, and the group adopted tributes to the late County Judge J. B. Coleman and to Frank J. Newman, former district attorney.

Tom Swift, a student at Ashland High school, recited Lincoln's Gettysburg address. Entertainment included numbers by a brass quartet from Southern Oregon college, including Keith Kramball, Ted and Ned Landers, and Jack Rawls, and the meeting ended with the group singing of "God Bless America."

ments in the law to eliminate abuses, and tighten up the relatives' responsibility provisions, particularly those pertaining to fathers who have abandoned their families.

Opposes Preference Clause
Discussing Northwestern power and river projects, he declared himself opposed to the preference clause which requires publicly owned power-generating plants to sell energy first, and more cheaply, to public bodies.

In labor legislation, Smith said he hopes that abuses under the unemployment compensation laws can be eliminated, and the depletion of reserve funds should there be another depression.

Looking toward 1956, the official said the Republican party is now having difficulty in developing competent leadership after 20 years out of power, and that it must look for and encourage potential Republican leaders to run for state and national offices. Women of the party must do more, too, he said, and be given more responsibility in party councils.

100 Attend
About 100 persons attended the dinner meeting, held in the Elks temple here, and Harry A. Skerry Jr., president of the club, was master of ceremonies. During election of new officers, Mrs. G. Q. D'Albini was again named historian, and other officers "moved up" through the officers' chairs. First vice-president Donald B. Whalin was named president, and the other officers include Mrs. Marion L. Langley, first vice-president; Richard Reynen, second vice-president, and Robert Root, third vice-president. E. H. Singmaster was named secretary-treasurer to succeed Root.

The program opened with group singing of "America," led by Henry Enders, followed by the flag salute and an invocation by the Rev. John L. Thompson. Telegrams and letters of greeting were read by Don Whalin, and included those from Secretary of the Interior Douglas McKay, Gov. Paul Patterson, Congressman Harris Ellsworth, Secretary of State Earl Newbury, State Rep. Ed Geary, speaker of the state house of representatives; State Treasurer Sig Unander, State Sen. Phil Lowry, and Representatives E. A. Littrell and E. H. Mann.

Tributes Adopted
Edward Branchfield presented the report of the memorials and resolutions committee, and the group adopted tributes to the late County Judge J. B. Coleman and to Frank J. Newman, former district attorney.

Tom Swift, a student at Ashland High school, recited Lincoln's Gettysburg address. Entertainment included numbers by a brass quartet from Southern Oregon college, including Keith Kramball, Ted and Ned Landers, and Jack Rawls, and the meeting ended with the group singing of "God Bless America."

Be a Sweetheart on VALENTINE'S DAY!
Take Your Family to Your Favorite Restaurant for a Wonderful Meal
Mom and the kids will love it! All the goodness of home-cooked meals... with no fuss... no bother... and no dishes to do.

Don't Forget to Drink MILK

Eaton's Dinner House
Trailways Cafe
Hotel Medford
Lulu's Cafe
El Rogue Cafe
Red Streak Cafe
Rogue Valley Country Club
Busy Bee Cafe
Holiday Inn Coffee Shop
Steak House Cafe
Maury's Corner

the dinner meeting, held in the Elks temple here, and Harry A. Skerry Jr., president of the club, was master of ceremonies. During election of new officers, Mrs. G. Q. D'Albini was again named historian, and other officers "moved up" through the officers' chairs. First vice-president Donald B. Whalin was named president, and the other officers include Mrs. Marion L. Langley, first vice-president; Richard Reynen, second vice-president, and Robert Root, third vice-president. E. H. Singmaster was named secretary-treasurer to succeed Root.

The program opened with group singing of "America," led by Henry Enders, followed by the flag salute and an invocation by the Rev. John L. Thompson. Telegrams and letters of greeting were read by Don Whalin, and included those from Secretary of the Interior Douglas McKay, Gov. Paul Patterson, Congressman Harris Ellsworth, Secretary of State Earl Newbury, State Rep. Ed Geary, speaker of the state house of representatives; State Treasurer Sig Unander, State Sen. Phil Lowry, and Representatives E. A. Littrell and E. H. Mann.

Tributes Adopted
Edward Branchfield presented the report of the memorials and resolutions committee, and the group adopted tributes to the late County Judge J. B. Coleman and to Frank J. Newman, former district attorney.

Tom Swift, a student at Ashland High school, recited Lincoln's Gettysburg address. Entertainment included numbers by a brass quartet from Southern Oregon college, including Keith Kramball, Ted and Ned Landers, and Jack Rawls, and the meeting ended with the group singing of "God Bless America."

Be a Sweetheart on VALENTINE'S DAY!
Take Your Family to Your Favorite Restaurant for a Wonderful Meal
Mom and the kids will love it! All the goodness of home-cooked meals... with no fuss... no bother... and no dishes to do.

Don't Forget to Drink MILK

Eaton's Dinner House
Trailways Cafe
Hotel Medford
Lulu's Cafe
El Rogue Cafe
Red Streak Cafe
Rogue Valley Country Club
Busy Bee Cafe
Holiday Inn Coffee Shop
Steak House Cafe
Maury's Corner

Groceries
Hotel Jackson
Brown's Cafe
Wimer Cafe
Whistle Stop Cafe
Big Y Super Market
Kim's Restaurant
Top Notch Cafe
Maid-Rite Sandwich Shop
Al White's Rogue Restaurant

Other restaurants or cafes wishing to cooperate and be included on our future ad Call Medford 2-8212. Ad paid by Milk Producers League and Jackson County Farmers Grange.

Automobiles Collide On Hillcrest Road

Cars driven by Ernest Samuel Engstrom Jr., 828A West 14th st., Medford, and Leslie William Lingscheit Jr., route 3, box 169, Medford, collided at about 4 p.m. Friday on the Hillcrest rd. about two miles north of Phoenix, according to state police.

Engstrom was cited for failure to drive on the right side of the road, officers said. His passenger, Jack Allen, 25, of the same address, suffered a minor cut on the head.

Both vehicles were reported to have sustained considerable damage.

Dell's Jewelry Sets Move to New Location

Dell's Jewelry will reopen Monday in its new location at 123 West Main st., according to the owners, Mr. and Mrs. D. L. Hain.

The Hains have operated the jewelry store on North Fir st. for the past 4 1/2 years. The new site in the Carpenters Union hall building, has been completely remodeled inside and outside.

City Court Fines Man \$100 on Two Charges

Jerald James McGrew, 24, route 2, box 482G, was fined \$100 in city court Saturday on charges of disorderly conduct and resisting arrest, according to police.

The police report stated that Officer Robert A. Gheysen spotted McGrew squatting behind a bush below a window on North Central ave., early Saturday. When the officer approached, McGrew ran, it was said. Gheysen ordered him to stop. Police said McGrew ran into an alley and down toward third street and Gheysen fired a shot into the air.

The chase led east on Third st. to an alley between Bartlett and Apple st., then through an alley where the officer "lost" his quarry. Officers Gheysen and Delaire Tusov, cruising the area, found him in a car on Bartlett st. He was arrested about 3 a.m.

The Women's Medical Specialist Corps is the youngest of the women's corps in the U.S. Army.

Returned to Medford
Dr. ROBT. E. LEE, Optometrist
OFFICES NOW OPEN AT THE
BIG Y MARKET BUILDING
1912 N. Pacific Hwy. Phone 3-5923
EASY PARKING

Be a Sweetheart on VALENTINE'S DAY!
Take Your Family to Your Favorite Restaurant for a Wonderful Meal
Mom and the kids will love it! All the goodness of home-cooked meals... with no fuss... no bother... and no dishes to do.
Don't Forget to Drink MILK
Eaton's Dinner House
Trailways Cafe
Hotel Medford
Lulu's Cafe
El Rogue Cafe
Red Streak Cafe
Rogue Valley Country Club
Busy Bee Cafe
Holiday Inn Coffee Shop
Steak House Cafe
Maury's Corner
Groceries
Hotel Jackson
Brown's Cafe
Wimer Cafe
Whistle Stop Cafe
Big Y Super Market
Kim's Restaurant
Top Notch Cafe
Maid-Rite Sandwich Shop
Al White's Rogue Restaurant
Other restaurants or cafes wishing to cooperate and be included on our future ad Call Medford 2-8212. Ad paid by Milk Producers League and Jackson County Farmers Grange.