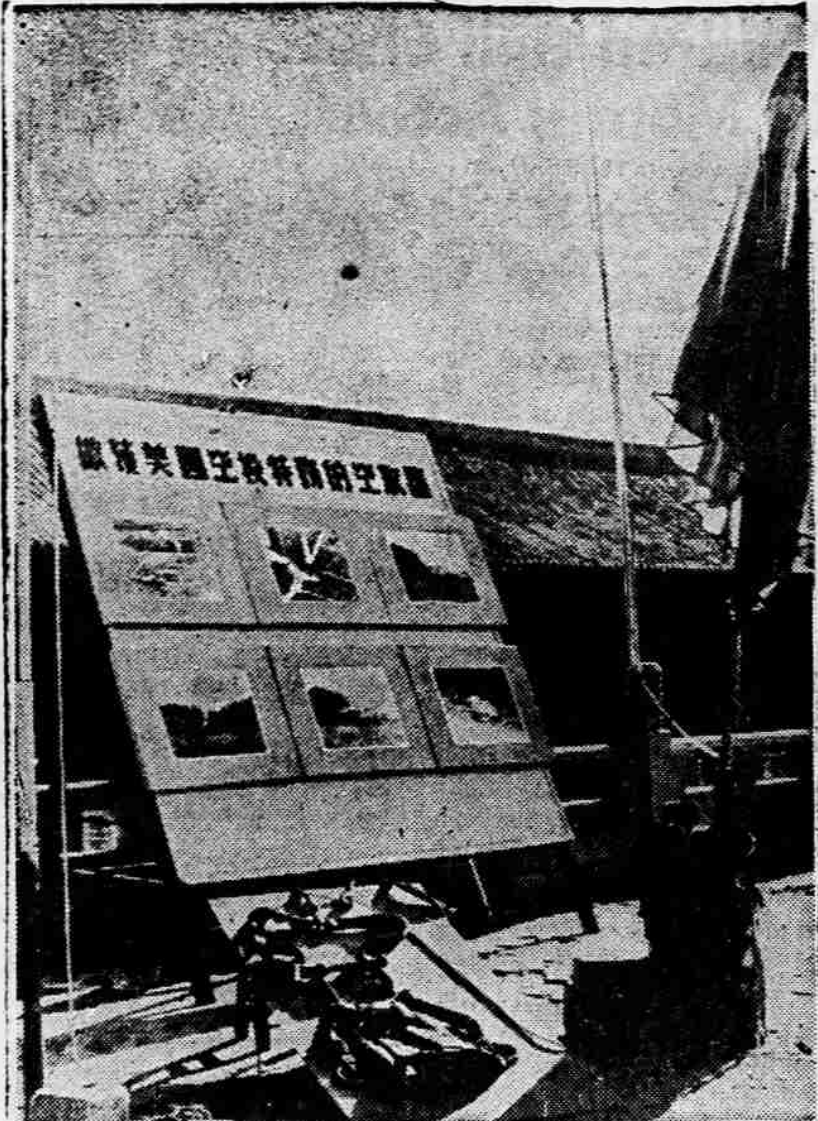


# Local Uranium Rush Forecast if Metal Discovered in Area

By RUSSELL MITCHELL  
 Recently Max Shafer, geologist for the state department of geology and mineral industries, spoke to a group of mining people here on the possibility of finding uranium in Oregon.  
 Mr. Shafer was for a while employed by the Atomic Energy commission. His opinions on the matter can be taken seriously. No uranium has as yet been found in southern Oregon, but Mr. Shafer says the older geologic formations of this area are favorable for the fabulous metal.  
 This is not to say that it will be found here, only that it will be found here, only that it will be found here. If even a small deposit is discovered, I believe the uranium rush will then be on.  
**Should Get Ready**  
 What should we do about it? Get ready. This means that people holding claims of any kind must see that lines are secured.

that their claims are so definite that no dispute can arise. Corner posts should be clearly marked and claim locations witnessed.  
 Don't try to laugh it off, folks. One little find this spring would touch off a rush such as is now going on in Utah, Nevada and Colorado.  
 Uranium, although rare, is widely distributed in nature. It is found in volcanic, metamorphic and sedimentary rocks. It is also found in mineral veins, even in coal beds. The rocks of southern Oregon contain all of the metals and non metals usually associated with uranium with one exception. That is vanadium. Quite likely proper testing would also reveal vanadium, at least in traces.  
**Found Here**  
 Non-metals associated with uranium are calcium, sulphur, arsenic, phosphorous and potassium. All of these are found here in Southern Oregon.  
 There are at least several dozen radioactive ores, but only a few are economically important. The most important, include carnotite, principal ore of uranium found in the United States. It is usually found in sandstone. It is always found in connection with vanadium. Autunite, a secondary mineral, is found in the weathered zones of ore deposits and in pegmatites. Autunite is fluorescent in the weathered zones of ore deposits. It is a phosphate bearing calcium containing copper.



**"EVIDENCE" COMMUNIST VERSION**—This Chinese Communist picture at Peiping is supposed to show "pick-up device" with which Reds say U. S. "spies" intended to pick up an agent downed in China. Poster display is presumably other evidence. In Washington, the Defense Department said the device appears similar to equipment purchased from commercial manufacturers for rescue work but that such equipment was not carried on Col. John K. Arnold's reconnaissance plane when lost over Korea.

## New Outdoor Guide Issued by State Highway Division

Salem — Oregon's newly revised Outdoor Guide is off the presses, with a number of new park facilities listed for the coming season.  
 The popular folder, published by the travel information division, Oregon State Highway Department, contains a map and facility list showing locations of principal state parks, state roadside rest areas and U.S. Forest camps which are located on major state highways.  
**Historic Markers**  
 The folder also lists historic markers erected by the highway department in cooperation with the Oregon State Historical society. The main picture page of the folder contains state parks regulations, information on overnight camping, caretakers, rest areas and national park areas in Oregon.  
 Major changes in facilities shown in the park listing showed that camping areas will increase from 47 to 84 at Wallowa Lake State park; ten camping areas at newly developed Ochoco Lake State park; 18 camping areas at Tumalo State park; change of Lakeshore Forest camp to Detroit Lake State park, with 35 camping areas; increase to 36 camping areas at Cove Palisades State park; increase to 22 camping areas at Big Creek park on the coast south of Waldport, and increase to 51 camping spots at Cape Lookout State park southwest of Tillamook.  
**Other Changes**  
 Other major changes show increased camping areas to be available at Honeyman State park near Florence, from 29 to 57; at Humbug Mountain, south of Port Orford, increased camping areas from 18 to 48 and Short Sands Beach, south of Cannon Beach from 8 to 18 camping areas.  
 Newly listed parks are Bandon Wayside and Fort Stevens near Astoria.  
 The folder is designed to be used as reference for motorists driving Oregon highways, seeking recreation in parks and forests—park areas are listed numerically on the folder's map and alphabetically by highways in the list of facilities corresponding to the map. The list indicates such facilities as water supply, comfort stations, stoves, fireplaces, fishing, unusual forest or trees, geologic interest, historic interest, boat landings and trails.  
 The new Outdoor Guide may be obtained by writing Travel Information Division, Oregon State Highway Department, Salem, Oregon.

## One Timber Tract Sold by Bureau

The only tract of timber offered for sale in January by the Medford district of the Bureau of Land Management was purchased by the Robert Dollar company of Glendale at an oral auction sale held at the District office in Medford city hall.  
 The tract, located near the head of Grave creek, contained 5,482,000 board feet of timber. The high bid for Douglas fir, which comprised more than 80 per cent of the stand, was \$24 per thousand board feet, compared to an appraised price of \$15.95. Other species were purchased at the appraised price. Magnolia Lumber Corp., Inc., of Ashland and Rogue River, was the unsuccessful bidder.  
 The bureau has announced that it will not have any timber advertised for sale in February, but expects to have approximately 10 million board feet of timber in four tracts in Jackson, Josephine and Douglas counties ready for sale on March 17. These four tracts will all be in accordance with the 1955 sale plan recently released by the District Forester.

## TB Seal Sale Reminder Cards Mailed; County Returns Up

Reminder cards were mailed by the Jackson County Public Health association last week to persons slow in buying Tuberculosis seals.  
 According to the association's president, Mrs. Chester Guches, incomplete returns from the county as a whole are at least 20 per cent above last year's sale, with Medford averaging the same as last year. Action on the part of Medford's "laggard's" could bring this average above the 1953 mark, and in line with the state and nationwide levels.  
**Most Stays Here**  
 Of funds received from sale of tuberculosis seals, 74 per cent will remain to be used in Jackson county. Mrs. Guches pointed out that all of this amount is used for the education, prevention, and treatment of tuberculosis in the county, and there are no salaries to be paid from it. During 1954 tuberculosis seal funds were used to establish the x-ray unit now in use at the Community hospital. A similar unit is scheduled for the Sacred Heart hospital this year. Public Health association members are expecting an increase in the general health of Jackson county residents, since the x-ray program will not only spotlight unknown cases of tuberculosis but will show up some 20 other diseases, including lung cancer. A program to photograph all food handlers in the county is currently under way.

## Court Records

**DISTRICT COURT**  
 Laurice H. Johnson, failure to stop at stop sign, \$10.  
 Norma M. Gearey, no oversize permit, \$10.  
 Wayne E. Medford, violation of basic rule, forfeited \$10 bail.  
 Howard L. Kusel, overweight load, \$15.  
 Albert E. Trautman, overload, \$26, no oversize permit, court costs only.  
 The government of New York state earns one dollar every second on the money it has invested.

## Portland Conclaves Net \$8,000,000 in '54

Portland — (U.P.) — Convention income for Portland in 1954 totalled about \$8,000,000 to make it the second highest year on record.  
 C. R. Linquist, chairman of the Chamber of Commerce convention committee, said 108,160 delegates attended 399 conventions in the Rose City in 1954. They spent an estimated \$7,868,640.  
 Average length of a convention was three days and attracted between 21 and 7,500 delegates.

## Hints for the January Bride

The Bride and Her Attendants: Every girl dreams of being married in white—and a white gown is still the most beautiful and traditional a bride can choose. Her attendants can, of course, wear gowns in any becoming colors in a style that harmonizes with the bride's gown.  
 Every bride will agree that one of the most beautiful and useful wedding gifts you can give is sterling in her favorite Reed & Barton pattern. Prices are for 6-pc. place settings and incl. Fed. tax.



\*Silver Sculpture, \$32.50  
 \*Sword, \$33.50  
 \*Classic Boat, \$31  
 \*Polished Antiqua, \$29.75  
 \*Francis I., \$36.50  
 \*Silver Wheel, \$29.75

**Marrin's**  
 MEDFORD

## Long-Time Medford Resident Passes

Lee Edward Hinman, 86, a resident of Medford from 1910 to 1944, died Wednesday at his home in Oregon City after an extended illness.  
 A native of Iowa, Mr. Hinman was a railroad man much of his life, starting at 15. He was with the Southern Pacific railroad in Medford from 1910 to 1914, when he was forced to retire because of paralysis. He and his wife, who died about five years ago, moved to Oregon City in 1944 to be near his son, Laurin E. Hinman, who also was a resident of Medford, from 1910 to 1918.  
 A daughter, Mrs. E. R. Van Leeuwen, Washington, D. C., also survives, as do two grandsons, a granddaughter, and a great-grandson.  
 Mr. Hinman was a member of the Masons, and was an elder in the Church of Jesus Christ of Latter Day Saints.  
 Funeral services were held Saturday in Oregon City, with interment following in Sunset Hills Memorial park. Bishop L. Edward Perry, of the Oregon City ward of the LDS church, conducted the services. Mrs. Van Leeuwen came from Washington for the service.

## AWARDED CONTRACT

Portland — (U.P.) — Army engineers said Saturday California Steel Products Co., Richmond, Calif., has been awarded a \$688,603 contract for furnishing intake trash racks and lifting beams for The Dalles dam powerhouse. The equipment must be delivered by April 1, 1956.  
 Hills Memorial park. Bishop L. Edward Perry, of the Oregon City ward of the LDS church, conducted the services. Mrs. Van Leeuwen came from Washington for the service.

**Samson Fuel Oil Service**  
 Under New Management  
**J. C. (Pat) Kennedy**  
 Owner  
 PROMPT, COURTEOUS DELIVERY  
 Phone 2-5296 Eve. & Sun. 2-8174  
 4th & Front St. Medford, Ore.  
 Use Tribune Want Ads

The First **White Stags** of '55

America's favorite Playclothes

... and never a gayer sight, we must say! This new collection of America's favorite play clothes features new indented stitching, hideaway zippers, solids and Neapolitan stripes in gay, washable Cool Dual colors that mix or match. Here are a few from the group, in White Stag's Original Sailcloth, air-conditioned, woven to let the breeze circulate!

Select Early!

use our convenient Layaway Plan

(UPPER LEFT) CABIN BOY JACKET: Saucy saucer-collared with three-quarter sleeves... 6.95.

(LOWER RIGHT) CLAMDIGGERS: with sleek side-zip and roll-up three-quarter length Trou... 4.95

((CENTER) STRIPED BLAZER: "Ivy League", 3-button blazer, long sleeves... 8.95.

CARRYALL BAG: Roomy shoulder bag in Neapolitan stripes and contrasting solid color 3.50 plus tax

Many other styles to choose from

Connie Scalawag . . . . . 6.98 pr.

Treat your feet to a world of comfort . . . in our "Scalawag" casual crafted from butter-soft calfskin, unlined all-over. It's the most comfortable shoe you'll ever put on.

Sale! one week only

**Luxite Charm Set**  
 in nylon tricot

Fashion-famous Nylon Tricot Lingerie, the loveliest lingerie, all misty and feminine with net and lace. Buy pieces to match once-a-year event so buy now and SAVE!

Reg. 10.95 CHARM GOWN in pink or white, sizes 32-38, NOW **7.79**  
 Reg. 7.95 CHARM SLIP in white only, sizes 32-42, NOW **5.79**  
 Reg. 4.95 CHARM HALF SLIP, white only, sizes S-M-L, NOW **3.79**  
 Reg. 1.95 CHARM BRIEF in white only, sizes 4, 5, 6, 7, NOW **1.59**  
 Reg. 1.65 PLAIN BRIEF, in white only, sizes 4, 5, 6, 7, Now **1.29**

Greeting cards for VALENTINE'S DAY (Feb. 14th) MAIN FLOOR.

**Marrin's**  
 MEDFORD

**CITY APPLIANCE**  
 for SYLVANIA TV  
 WITH HALO LIGHT  
**CITY APPLIANCE, INC.**  
 127 No. Central—Opposite Penney's - Ph. 3-5743