

National Grange Raps 'Shabby Job' By Dairy Industry

Washington — (U.P.)—The National Grange yesterday blamed a "shabby job" of selling by the dairy industry as one of the major causes for the industry's current woes.

In an extensive report on eight barriers to fluid milk sales, the Grange also cited consumers' growing fear that milk is fattening.

The report said that "what rankles dairymen" most about the charge that milk is fattening is that "many people who have cut down on milk consumption . . . continue to indulge in rich gravies, desserts, and other truly fattening foods."

Diets Rapped

It said "erratically self-imposed" diets based on magazine, newspaper or neighborhood weight reducing projects are probably those that shift most readily from whole milk to skim milk or to no milk at all—as opposed to diets undertaken under doctors' direction.

Besides the weight conscious consumers, the Grange listed these barriers to fluid milk consumption:

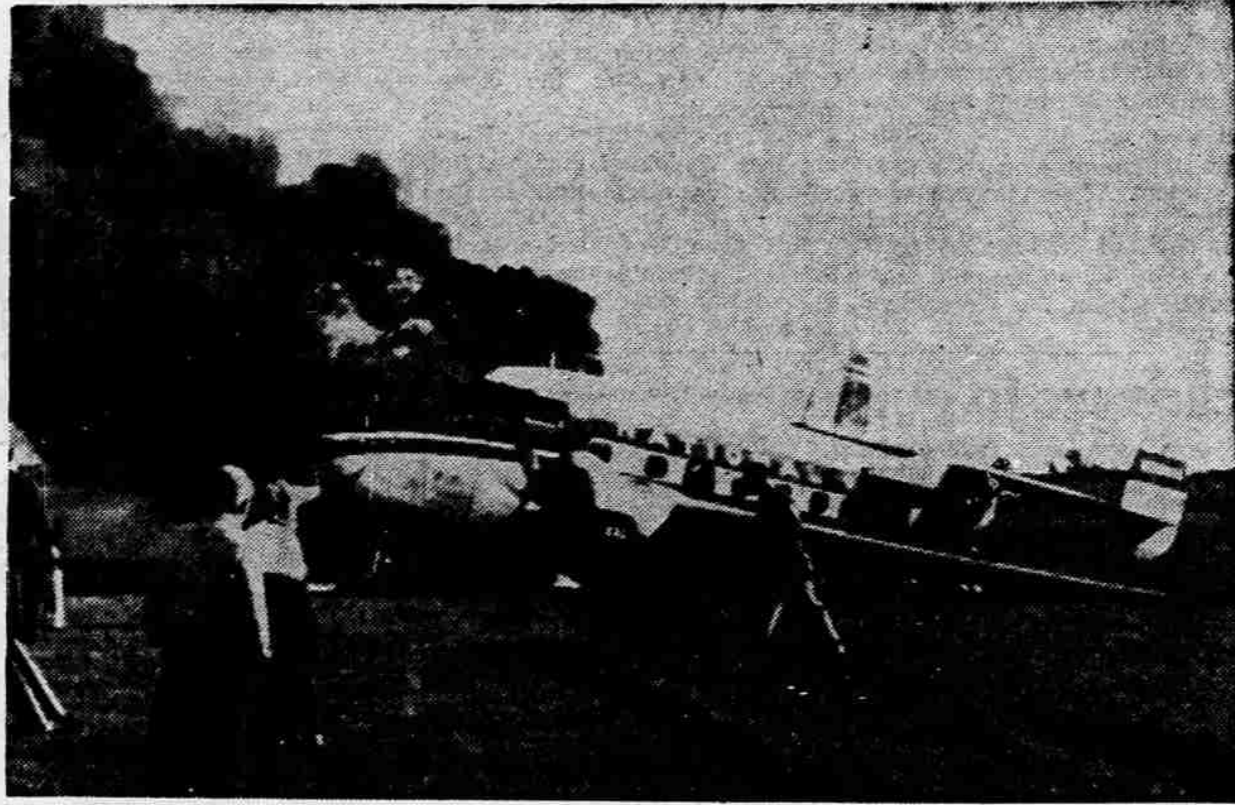
- Weak merchandising; the industry's complacency and resistance to changes like paper cartons and gallon jugs; lack of coordination in the industry; labor practices which restrict price competition and marketing innovations; local sanitary regulations which are often "excessively detailed;" wholesale and retail milk price control; and "cumbersome" federal rules under milk market orders and other federal problems.

AND NO INSURANCE

Hartford, Conn.—(U.P.)—During a farm census in Connecticut, six enumerators were bitten by dogs.

MEDFORD MAIL TRIBUNE

Second Section MEDFORD, OREGON, FRIDAY, JANUARY 14, 1955 6 Pages



GOING UP IN SMOKE—Firemen and volunteers move to battle the blaze that is consuming this National Air Lines Lockheed Lodestar at St. Petersburg, Fla. The plane crashed during takeoff but all 10 passengers and three crew members escaped without serious injury.

'Phone Price Set By Central Point Telephone Company

Central Point—A committee of the Central Point Mutual Telephone company has reported that subscribers will be paid from \$3 to \$21 for telephone instruments they are now using when the company is taken over by the Pacific Telephone and Telegraph company.

Sale of the mutual organization to PT&T was announced last year, following approval by the Federal Communications Commission.

The committeemen, Gaston

Floux and W. B. Kincaid, said they set the prices after careful consideration at \$3 for wooden instruments and \$21 for plastic telephones, with a 50 per cent discount for damaged instruments.

Must Be Returned

The sale agreement with PT&T specifies that the mutual company is to return all telephones of record, plus extensions, to the Pacific company.

As soon as possible after the change, Raymon G. Ekdahl, the

manager, will remove the old telephones, leaving a receipt indicating the amount to be paid for it.

At a Dec. 4 meeting, the company voted to redeem shares in the company on record as of that date. Proceeds of liquidation will be divided equally among the shareholders.

Twelve U. S. officials have been the subjects of impeachment proceedings.

Jackson County S&L Assets Up

Medford—A 12.9 percent gain in total assets in 1954 was reported today by W. J. Warner, president of Jackson County Federal Savings and Loan association, in a statement released with the association's annual report.

John Pletsch, secretary-manager, said that the association's assets increased from \$8,016,757.23 on Dec. 31, 1953, to \$9,052,439.04 on the same date a year later.

The report also revealed that a total of \$215,490.99 was paid in dividends on savings invested in the association. Net savings increased by \$805,191.41, or 11.2 per cent, in 1954. Savings in the association now total \$7,978,700.77.

At the same time, home loans increased by \$680,245.79, or 10 per cent, over 1953.

Pletsch said that all indications are for a more prosperous year in the Rogue valley in 1955. He predicted that home building this year would probably equal or better the 1954 level, with a possible increase due to new industries in the valley. He also predicted savings would increase in 1955.

Littrell Parts Has GM Distributorship

E. A. Littrell, president of Littrell Parts, United Motors distributor, has announced his firm now offers a line of General Motors original equipment engine and chassis service parts.

"For the first time a major automobile manufacturer now offers through an independent parts wholesaler a line of chassis and engine original equipment parts," Littrell said.

The company now offers to automotive parts dealers, service stations and garages, chassis and engine parts for Chevrolet, Pontiac, Oldsmobile, Buick, Cadillac and General Motors trucks.



SALE

Everything you need to make your linen closet ideal is here in substantial quantity, of dependable quality and at savings. Shop your Winter bedding needs at Mann's tomorrow. Use our Layaway plan.

TEXTRON AUTOMATIC ELECTRIC BLANKET

Reg. 22.98 twin and full size Electric Blanket, NOW . . . (Single Control) **19⁹⁹***

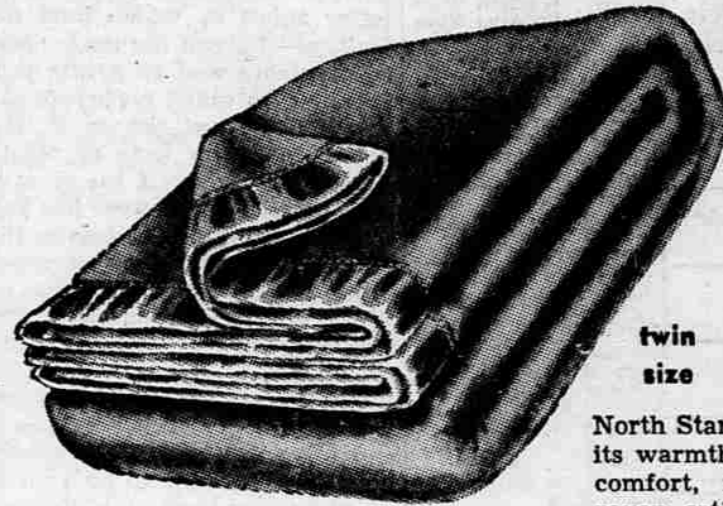
Reg. 28.50 full size Electric Blanket—(dual control) NOW *Price Includes Tax **24⁹⁹***



One year replacement guaranteed

- Save at these prices.
- Underwriter's Laboratory Approved
- 25% wool, 25% cotton, 50% rayon
- Blue, Rose, Green, Red and Cedar
- Completely Washable
- Restful, Warm Sleeping Is Yours

This is the blanket that we have not been able to keep in stock because of the tremendous demand . . . so be sure to get yours now while the low, low, price is available.



North Star 100% Virgin Wool BLANKET

Costs less because it lasts longer.

twin size **16⁹⁵** full size **19⁹⁵**

North Star's "Canden", famous for its beauty, its warmth, its luxurious, night-long sleeping comfort, its years of satisfying use. Wide rayon satin ribbon binding. Rich colors* to choose from.

NEW SHIPMENT!

Pendleton Blankets

Plaids and Plains

Size 72"x90" **18⁵⁰**

Virgin wools selected for their long, deep nap that forms a perfect insulation strong fibres. Weave that combines long wear with a soft, draping quality. A deep, against cold.

OUTSTANDING BUY!

ALL WOOL BLANKET

"Frosty Morn" Pattern

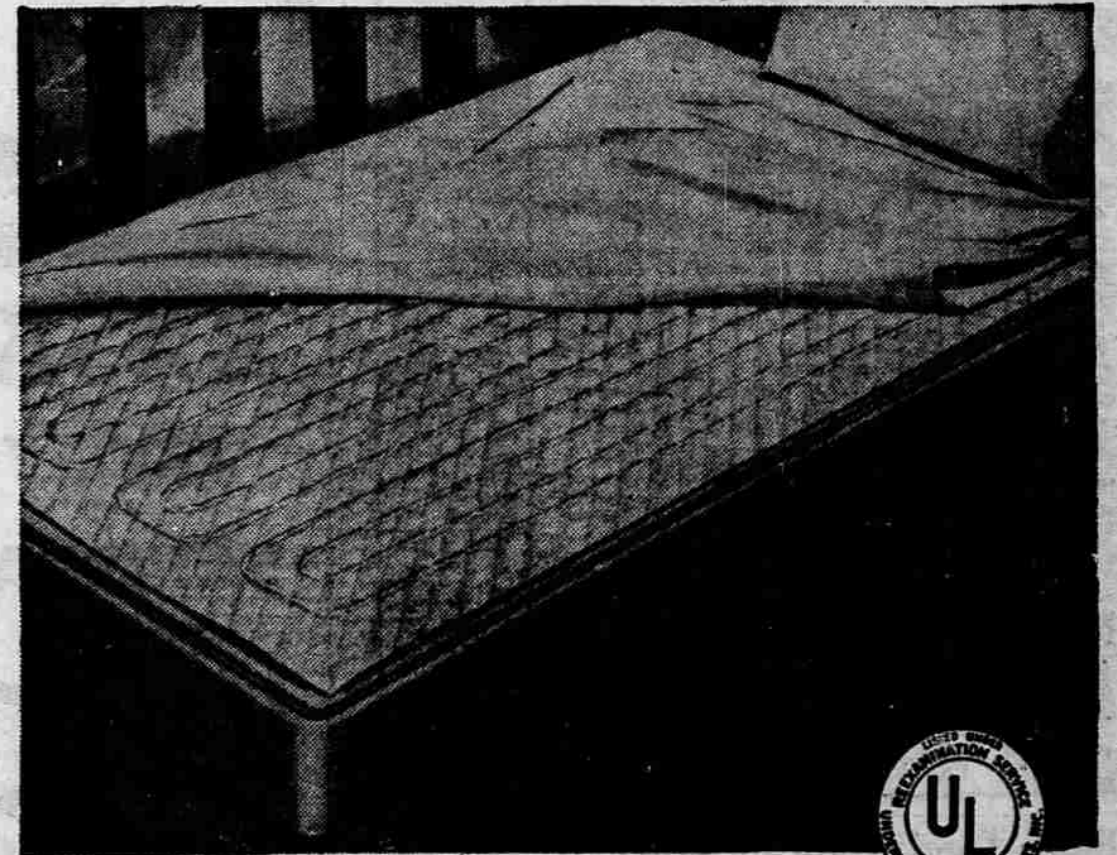
9⁹⁹ 2 for 19.50

Special Purchase! Deep-napped solid color blanket with contrasting stripe border. A full 72"x90" with whipped ends, 4 lbs. weight. Colors are Brown, Green, Rose-Wine and Blue.

It's New! for restful, healthful sleep . . . Indian Head

ELECTRIC MATTRESS PAD

Two Year Replacement Guarantee



new low price!

twin size **14⁹⁸** full size **16⁹⁸**

It covers your mattress and how it comforts you! The warmth it sends up feels like the warm sun on your back . . . relaxes you through and through, all through the night . . . switch . . . low medium and high.

Our JANUARY WHITE SALE is still in progress. Save on Cannan, Pacific, Utica and Wamsutta sheets and cases.

Mann's
MEDFORD

Only in America's First-Choice Truck—
All These First-Choice Features For You!

'55 CHEVROLET TRUCKS



No other trucks offer you all these hour-saving, dollar-saving features. And Chevrolet's the lowest-priced line. So, naturally, it's the best seller!

AMERICA'S FIRST CHOICE TRUCK!



DOLLAR-SAVING ENGINE FEATURES

You get exactly the right power for your job. All three engines have aluminum alloy pistons, all-weather ignition system, full-pressure lubrication for long low-cost life!



WORK-SAVING CONTROL FEATURES

Less effort needed with exclusive Recirculating Ball Steering Gear; Torque-Action and Twin-Action brake design helps you stop more surely and easily every time!



LONG-LIFE CHASSIS FEATURES

Sturdy single-unit tubular steel rear axle housings! Strong and rigid frames! Durable, Diaphragm-Spring Clutches with high torque capacities and long-life construction.



Ninth and Bartlett Streets

COURTESY CHEVROLET

Phone 2-6115
Medford