

The BIG Y MARKET
WILL CLOSE AT 5 P.M.
CHRISTMAS EVE &
WILL BE CLOSED ALL DAY CHRISTMAS

MERRY CHRISTMAS

- CRANBERRY SAUCE** OCEAN SPRAY 2 No. 300 can **25¢**
- COCONUT** DROMEDARY SHREDDED 2 4 oz. boxes **19¢**
- PINEAPPLE** DEL MONTE SLICED 2 No. 2 cans **57¢**
- RIPE OLIVES** LINDSAY JUMBO 2 No. 1 cans **59¢**
- STRAWBERRY JAM** Tillie Lewis or Flotill 20-OZ. Jar **39¢**
- MAYONNAISE** BEST FOODS Quart Jar **49¢**
- CHOCOLATES** SENSATION OLD FASHIONED 1 lb. 12 oz. **53¢**

FOR A COMPLETE SELECTION OF FANCY TABLE WINES VISIT THE BIG Y MARKET

JORGENSEN'S
Flaming ICE CREAM
SNOWBALLS 6 Coconut Covered Ice Cream Balls with Holly Leaves and Berries PKG. **89¢**

HAMS

HORMEL BRAND
 WHOLE OR PART

Tenderized DEL-I-CUT Ready to Eat

lb. **59¢** | lb. **67¢**



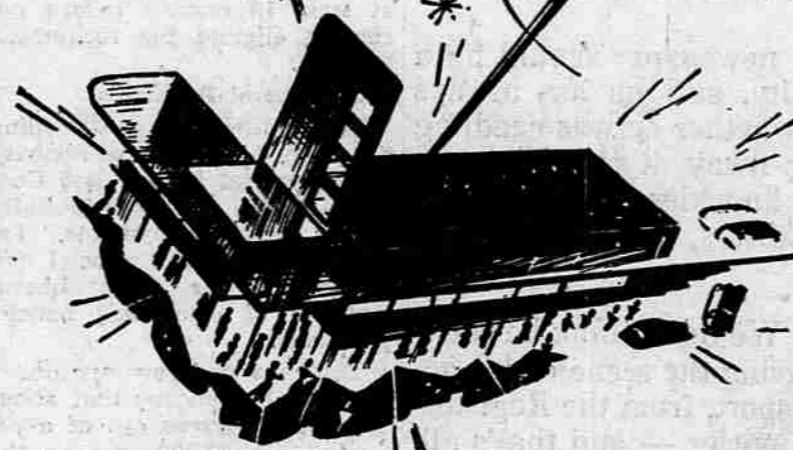
SAUSAGE ROLLS MORRELL'S PRIDE **39¢**

LUTEFISK TRIMMED AND SOAKED 3 LB. BOX **98¢**

DUCKS Long Island Duckling, LB. **59¢** **CHICKEN** Soft Bone Roasters LB. **59¢**

FOR YOUR COCKTAIL, SALAD, OR DRESSING WE HAVE A COMPLETE SELECTION OF OYSTERS, CRAB MEAT & SHRIMP. THE FINEST OF DESSERT CHEESE ARE AT THE BIG Y!

SLICED BACON Hormel's Eastern lb. **45¢**



MISSION BRAND
PUMPKIN

2 NO. 303 CANS **9¢**

PIE CRUST MIX 2 CRUST PACK PKG. **13¢**
 HOT ROLL MIX PILLSBURY PACKAGE **25¢**

CAKE MIX

BETTY CROCKER

DEVILS FOOD MARBLE CAKE SPICE CAKE WHITE - YELLOW 4 PKGS. **95¢**

ORANGES

NEW CROP NAVEL

12-lb. BAG **89¢**



AVOCADOS JUST RIGHT FOR SALAD 4 FOR **25¢**

CELERY, crisp green POUND **7¢**

GRAPES FLAME TOKAY 2 LBS. **23¢**

WALNUTS or **ALMONDS** 1-LB. CELLO BAG **39¢**



Always a Place to Park
 We Reserve the Right to Limit Quantities