

50 Representatives to 4 H Summer School Announced

The 50 representatives from Jackson county's 4-H clubs who will attend the Annual 4-H Summer school June 17 to 27 on the Oregon State college campus were announced yesterday by R. H. Cate Jr., county agent in 4-H work.

The list includes 27 girls and 23 boys. The girls and their sponsors are:

Dona Lee Brown, Applegate, Applegate Parent-Teachers association scholarship; Rose Marie Jantzer, Prospect, Red Blanket Lumber company; Gwen Krouse, Applegate, Applegate 4-H home economics club; Catherine Carroll, Eagle Point, county fair board; Donna Ekew, Gold Hill, Oregon Poultry producers; Lucy Gardner, Eagle Point home extension unit; Cynthia Rukovina, Medford, J. C. Penney company, Medford; Miltzy Baysinger, Applegate, county fair board; Erma Childress, Central Point, J. C. Penney; Ashland; Verity Day, Gold Hill, county fair board.

Ferne Kellow, West Side, West Side Parents club; Anita Kubli, Applegate, Medford Groceteria; Linda Mal-

loroy, Antelope, county fair board; Vanetta Moeller, Roxy Ann, Roxy Ann 4-H club; Dazlene Nye, Prospect, Lewis Clevenburg, Prospect Shopping center; Jean Bitterling, Antelope, county fair board; Beth Buck, Evans Valley, J. C. Penney, Medford; Mildred Gail, Gold Hill, U. S. National bank; Joann Russell, Central Point, Rebecca Lodge, Medford; Gail Skyrman, Central Point, state forestry board; Dorcen Bohmert, Antelope, Sears Roebuck foundation; Beverly Nelson, Griffin Creek, Griffin Creek Grange; Char-mayne Charley, Antelope, Eagle Point Grange.

Bernice Bligham, Antelope, Sears Roebuck foundation; Marilyn Bohmert, Antelope, Camp Plummer award; Shirley Nelson, Griffin Creek, county fair board; and Dixie Moore, Eagle Point, Eagle Point Grange.

The boys and their sponsors are:

Charles Elmore, Applegate, county fair board; Hugh Millard, Upper Rogue, Upper Rogue 4-H club; Johnnie Rains, West Side, West Side home economics unit; Monte Axtell, Upper Rogue, Upper Rogue 4-H club; Francis Krouse, Applegate, Central Point 4-H club; Truman Price, Sams Valley, Central Point Garden club.

Norman Barnes, Howard, Central Point Grange; Kenneth Bitterling, Antelope, Antelope 4-H club; Carl Dobrot, Central Point, county fair board; Marvin Hamilton, Bellview, Ashland Elks; Gary Krouse, Applegate, Applegate PTA; Leland Nelson, Roxy Ann, county fair board; Ray Shifer, Prospect, Eugene Burrill; Dale Smith, Central Point, county fair board; Carl Ellis, Roxy Ann 4-H; Don Smith, Medford, county fair board; Don Parker, Gold Hill, Medford Groceteria; Gold Hill, Grange; Allen Swearingen, Howard, Central Point Grange; Joe Dale, Bellview, Ashland Elks; Eddie Peile, Upper Rogue, Sears Roebuck foundation; Dick Biles, Gold Hill, U. S. National bank; Larry Sheppard, Roxy Ann, Medford Groceteria; and Michael Clark, Griffin Creek, Central Point 4-H club.

Accompanying chaperones for the group will be Mrs. Ferd Jones, Gold Hill; Mrs. Barbara Rukovina, Medford; Mrs. John Bohmert, Central Point, and Cate.

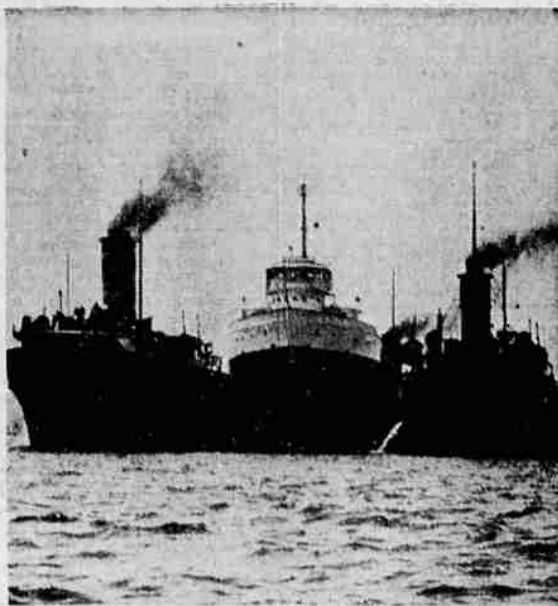
The Jackson county health department will offer exams for communicable diseases from 9 a.m. to 12 noon, Monday, June 16, at the courthouse, for those attending the school.

Also, Cate added, all girls attending are requested to bring sewing boxes and supplies.

The delegation will leave at 8 a.m., June 17, from the courthouse steps by chartered bus.

Radio programs will be regularly broadcast from station KOAC, Cate added, with Saturday, June 21, from 6:0 to 7 p.m., set aside for a feature on Jackson and Morrow county delegations as the summer school. Assembly programs will be broadcast from June 18 to 26, 1 to 2 p.m., over the station, with a daily feature or county program each day, June 17 to 27, 6:30 to 7 p.m.

It takes the government exactly one second, according to Sen. Byrd of Virginia to spend all the federal taxes paid by a man with a wife and two children, earning \$12,000 a year.



BOATS IDLE—This cluster of idle ore boats waited lazily in Cleveland harbor June 9 for end of the steel strike. Crews remain aboard ready to dash for the head of the lakes when activity is resumed. Empty boats are idle because iron ore miners quit work in sympathy with steel strikers, and the lake front docks are filled with ore which cannot be moved to steel mills.

Agriculture Planners Eye Wheat Crop for Next Year

Washington — (AP) — Agriculture Department planners got out their long-range slide rules Thursday for a study of next year's wheat crop.

Prospects of near-record production this year — 1,326,000,000 bushels — led to the "prompt review" of the nation's wheat needs into motion.

Secretary of Agriculture Charles F. Brannan must decide by July 1 if limits on the 1953 crops are needed to make room for other crops on the

farms or to stave off a wheat surplus.

"We are certainly put in the position of having to look a second time at the wheat situation," a department spokesman said.

The department forecast Tuesday for this year the second largest wheat output on record. If achieved, the crop would bring the total supply up to the technical "normal supply" level required for the setting of acreage allotments or marketing quotas on the following year's crop.

Most department spokesmen

in some villages of Cavite in the Philippines when someone is robbed and the suspects are living in the same house with him, he usually forces the suspects to chew raw rice. The one who spits the most sticky saliva is considered the thief on the assumption that because he is guilty he is excited and chews faster.

man of the advisory committee, and it is hoped every organization will have a representative present. Anyone interested is welcome to attend, she added.

feel that chances for restrictions on plantings next year are slim. They think Brannan will choose to reduce the department's 1953 wheat goal and hope farmers will follow it better than they did this year's goal.

One expert said imposition of controls on wheat production next year "would not be realistic" in the light of the international situation.

Use Mail Tribune Want Ads

Bliss Heine's Juniors Leave for Rose Festival

A Pacific Greyhound bus and a caravan of 10 cars left here this morning to take members of Bliss Heine's Junior's and chaperones to the Portland Rose festival. The group plans to stay at West Linn on the Willamette river, and will travel by bus to and from Portland during the festival.

They plan to return home Sunday afternoon.

DOUBLE THE STRENGTH OF REGULAR SAL SODA

COSTS 2¢ LESS PER DOZ. DOES 10¢ MORE

● This improved Washing soda gives you water soft as rain. Washes your clothes with less soaking and less rubbing.

Plywood Workers

To those who are interested in buying a working share in a going plant at Roseburg. For further information see Mr. Fah in the lobby of the MEDFORD HOTEL, FRIDAY, JUNE 13, Afternoon and evening.

WESTERN PLYWOOD ASSOCIATION

Juvenile Advisory Group Will Meet

A special meeting of the juvenile court advisory committee has been called for next Monday evening, June 16, at 8 o'clock in the courthouse, it was announced today.

John Schapps, western director of the National Probation and Parole association, will at-

tend the meeting and report on the survey of detention home needs which has been made in the county by the national association.

Other matters of importance to the juvenile court program will also be discussed, according to Mrs. Victor Birdseye, chair-

PRICES FRIDAY - SATURDAY - SUNDAY

Stuffed or Green OLIVES 1 1/2 OZ.—2 OZ. Maraschino CHERRIES 2 1/4 OZ.	PLYMOUTH COFFEE lb. OUR OWN BLEND—U-GRIND 82c
--	--

Sunshine Krispy Crackers 1 lb. pkg. 26c
 Sunshine Hydrox Cookies 12 oz. pkg. 39c
 Sunshine Mint Pillow Candy 12 oz. pkg. 33c

WESSON OIL
 Quarts 61c
 Snowdrift Shortening 3 lbs. 86c

REMEMBER DAD ON FATHER'S DAY CARTON
Popular Brand Cigarettes 1.59

Better Produce at Lower Prices TASTY CANTALOUPE 2 for 35c SOLID CABBAGE Lb. 5c GOLDEN BANANAS 2 lbs. 29c	HUNT'S Garden Swt. Peas 14 1/2 oz. can 15c BLUE PLATE Broken Shrimp WET PACK 5 oz. can 36c DEL ROQUE Tomato Juice No. 2 can 13c
--	---

SLICING
TUBE TOMATOES EACH 27c

MEDFORDS FINEST MEATS
 MORRELL OR OREGON CHIEF TENDERIZED
PICNIC HAMS POUND 49c

FRESH LING COD HALF—WHOLE Lb. 25c	Cascade Brand BACON ENDS—PIECES Lb. 19c
-----------------------------------	---

Open 8 a.m.—9 p.m. Sunday 10 a.m.—8 p.m.

PIGGLY WIGGLY

58H STAMPS 526 SOUTH RIVERSIDE 58H STAMPS

10¢ OFF



on the regular size jar of this amazing new coffee!

Not a powder! Not a grind! But millions of tiny "FLAVOR BUDS" of real coffee... ready to burst instantly into that famous MAXWELL HOUSE FLAVOR!

How this special offer can actually save you thirty-five cents!

This regular jar of Instant Maxwell House makes about as many cups as one pound of ordinary ground coffee—yet it costs you about 25¢ less, even at regular prices!

Now—this special "Get Acquainted" price saves you 10¢ more. Your total savings add up to about thirty-five cents—or more than one-third the cost of regular ground coffee!



Utterly unlike old-style "instants"—just as quick-to-fix, but tastes so deliciously different! . . . 100% pure coffee—no fillers added! Don't delay—get your jar at your grocer's today!

The only instant coffee with that **GOOD-TO-THE-LAST-DROP** flavor!