

Vining Comedy Said Funny; Somewhat Below Standard

The Vining Repertory players opened their spring season last night in Ashland with a humorous but otherwise slightly below standard presentation of "Arsenic and Old Lace."

Although the below capacity audience responded well to the play's comedy, the production dragged its feet during the portions which were not aimed directly at a laugh. This seemed to be particularly true in the first and part of the second acts, when certain members of the cast appeared tense and unable to put any life into their lines.

Exceptions noted. Exceptions were Clara Margaret Daniels and Suzanne Lamarr Hanson, as the lovable but batty Abby and Martha Brewster, and Philip Hanson, in the minor role of the Rev. Dr. Harper.

Members of the cast who definitely improved as they went along were Eddy Barron, as bug-blowing Teddy Brewster; Elaine Wendel, as Elaine Harper; Franklin Reed as Mortimer Brewster, and H. Paul Kliss as Dr. Einstein.

Reed, in particular, gave a rather strained performance

Early-Day Resident Visits Jacksonville

Fletcher Linn, former Jacksonville resident, left today for his home in Portland after visiting here for four days. With his family, Linn lived in Jacksonville as a child and young man when his father operated a furniture factory during the early days of the old mining town.

While Linn was here this week he gave the Jacksonville Museum a copy of "The Mineral Resources of Oregon," a monthly published in August, 1914, by the Oregon Bureau of Mines and Geology.

Very few copies of the publication exist at the present time, Linn said. The contents of this issue covers in detail the mineral and petrology resources of Jackson and Josephine counties and includes much of the history of the mining areas and information on mineral water.

Rogue Valley Couple Fined in Yreka Court

Yreka, Calif.—A Rogue valley couple was released from custody here Sunday after the payment of \$15 fines in justice court for disturbing the peace, according to the Siskiyou Daily News.

The paper reported that Gladys Mae Johnson, 41, Rogue River, and James Franklin Riley, 53, Central Point, were arrested by officers on Highway 99 near the Klamath River bridge early Sunday. The officers said the two were "working each other over" and that the woman suffered a scar over one eye and Riley had several cuts and bruises.

The two appeared before Yreka Judge Claude E. Gillis, and were released when Riley paid the fines and promised to pay for doctor's bills, the newspaper said. It added that reports indicated the couple had come to Yreka to be married.

An aid to keeping freshly shampooed hair as clean as possible between washings is to tuck cotton down into the bristles of the hair brush.

Population per square mile of arable land is 68 in Russia, 102 in the United States, 500 in Italy, 587 in Germany and 2,430 in Japan.

Tax Officials To Meet With Ashland Council

Ashland—State and county tax officials will meet with the Ashland city council tonight to explain the tax equalization program now under way throughout the state, including Jackson county.

State Tax Commissioner Robert McLean, County Assessor C. A. Myers, and members of their staffs will attend the meeting. The public has been invited to hear their explanation of the project.

Milk Production Increase Reported

A registered Holstein bull owned by Rene Espourteille, Eagle Point, has increased the milk production of his daughters over that of their dams by a considerable extent, it was reported today by the Holstein-Friesian Association of America.

Statistics compiled on the bull, Carnation Governor Madcap Eminent, indicated that the daughters' production increased by 125 pounds of butterfat and 2,980 pounds of milk, based on twice-daily milking for 305 days.

Retired Ashland Farmer Dies Monday

Ashland—John A. Kelts, 76, of 369 Granite street, died Monday at Ashland General Hospital. Funeral services will be held Thursday, April 17, at 1:30 p.m. at Litwiler Funeral home with the Rev. Ross Knotts, pastor of the Ashland Methodist church, officiating.

Mr. Kelts was born June 13, 1875, at Sparta, Wis. He farmed in the Anderson creek area from 1907 to 1913 when he moved to Ashland. He was preceded in death in 1920 by his wife, Ida May. Mr. Kelts is survived by seven children, including Glenn and Marcus and Mrs. Susan Luchterhand, all of Ashland.

Antwerp is one of the principal coffee markets of Europe. Mount Davidson, 925 feet, is the highest point in San Francisco.

Geologists have concluded the deepest portions of the Golden Gate are floored by bedrock.

The salt industry of California is located mainly along the southeast shore of the San Francisco bay.

BRUISED, SHOCKED

Gail DeRushe, 9, daughter of Mrs. Lila DeRushe, 332 Mary street, and Mrs. Juanita Mock of the same address, sister of Mrs. DeRushe, received shock and body bruises Saturday evening when the car Mrs. Mock was driving left the highway near Foothills creek. The child and her aunt were enroute to Grants Pass where the girl was to spend Easter Sunday with her grandparents. The car struck a bump in the highway and Mrs. Mock lost control of the car, Mrs. DeRushe said. The vehicle rolled over several times and stopped just short of going into Rogue river, she added. Mrs. DeRushe was not an occupant of the car.

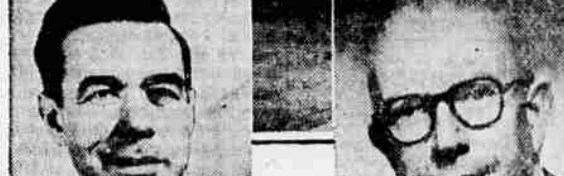
Stricken at Work—Herbert Clewenger, 1132 Court street, was taken yesterday afternoon by Conger Morris ambulance to Osteopathic hospital when he was taken ill at his work at Medford corporation, hospital attendants said today. He is hospitalized for medical attention, they added. Mrs. Richard Davis, 114 Granite street, Ashland, underwent major surgery at the same hospital today, the attendants said.



BISHOP TIPPETT San Francisco



BISHOP BAKER Los Angeles



BISHOP KENNEDY Portland



BISHOP PHILLIPS Denver

METHODISTS SLATE GENERAL CONFERENCE—Methodists from every state of the United States and from at least 30 other countries will convene for two weeks, starting April 23, at Civic Auditorium at San Francisco, to plan and legislate for the denomination's next four years. A number of members of First Methodist church, Medford, will attend the conclave, according to the pastor, the Rev. Meredith Groves. It will be the first time in half a century that such a Methodist session has been held in the west. Bishops of the church, pictured above, will be hosts. Bishops from Argentina, India and Switzerland, attending the conclave, will speak at the Medford church on successive Sundays.

Knights of Columbus Set District Conclave

Grants Pass—Oregon Caves Council 3157, Knights of Columbus, will be host to District 5 of the K of C at an all-day initiation April 20. Councils participating will include Roseburg, Coos Bay, Medford and Grants Pass. The ceremonies will include Mass at St. Anne's Catholic church at 9:00 a.m., when all knights and candidates will receive Com-

munion in a body, 10:30 a.m. Communion breakfast at the Cave shop, 11:30 a.m. Registration of candidates at K of C club, noon exemplification of first, 2nd and 3rd degrees, and 5 p.m. social hour and buffet supper at K of C club, Harold Desbiens, District Deputy, Roseburg, will be in attendance. All knights are invited to attend.

117 South Central Medford Phone 2-4261

Montgomery Ward

HOUSEWARES SALE

Reg. 75c to 89c **66¢** Each, Your Choice

OVER 20 ITEMS—ALL REDUCED 12 TO 25% STOCK UP NOW—SAVE ON EVERYDAY NEEDS

Real Gold California ORANGE BASE

Costs less than orange juice

Scallops So Gay



DRESS HERSELF DRESS! It buttons down the front! Helpful to you too, Mother—it opens out flat to iron! It's the sweetest frock you ever made—has that redingote look. Also popular child fashion this year—the angel sleeves and scalloped panties! Pattern R9095; Child's Sizes 2, 4, 6, 8, 10. Size 6 dress, 1 1/4 yards 35-inch; 1 1/4 yards contrast.

This easy-to-use pattern gives perfect fit. Complete, illustrated Sew Chart shows you every step. Send Thirty-five cents in coins for this pattern to Marian Martin, care of the Medford Mail Tribune, Pattern Dept., P.O. Box 6740, Chicago 80, Ill. Print plainly your NAME, ADDRESS, SIZE and STYLE NUMBER.



Hey, mom, it's time for REAL GOLD!



Newberry's SUMMER PIECE GOODS Sale

36 in. NAPI prints 79¢/yd. Mercerized, sanforized—finest quality cotton... Guaranteed fast color. South of the border prints.

SOLID COLOR denim 54¢/yd. America's favorite playtime cloth is blue denim Sanforized for perfect washability. For all sportswear for yourself, your child, dress. 36" wide. Also Plaids & Checks.

PRINTED pique 59¢/yd. Tissue-crisp waffle pique in a bright assortment of patterns for beautiful new fashions. It's guaranteed washable. Many colors. 36" wide.

SOLID COLOR EMBOSSED cotton 69¢/yd. Lovely floral designs on a cool cotton that's guaranteed washable. Pre-shrunk. White and pastel colors. 36" wide.

SOLID COLOR WAFFLE AND FINE WALE pique 49¢/yd. You'll find dozens of ways to use this tubular fabric. Wide variety of patterns, guaranteed washable. Smart summer colors. 25" and 36" wide.

PRINTED dimitry 44¢/yd. 10-20 yd. lengths. 36 in. wide. Reg. 49c value. SPECIAL

SHEER RAYON butcher weave 59¢/yd. You'll see such exciting new colors as "Blarney Blue" and "Boating Green." Hand washable, controlled 3-5% shrinkage. Beautiful quality.

terry toweling 98¢/yd. Perfect for beach robes, towels, many uses. Fine, soft, absorbent. In white.

300 YDS. PRINTED PLISSE remnants 44¢/yd. 36 in. wide. Fast color, bright Hawaiian prints. Need no ironing.

40" PERMANENT FINISH organdy 49¢/yd. It's delicate in appearance, with practical, permanent crisp finish. White and cool shades.

SOLID COLOR twills 49¢/yd. Sturdy, durable fabric—favored for all sportswear. Mocha, linen blue, red, brown, navy. 36 in. wide.

J. J. NEWBERRY CO. Sixth and Central Medford's Bargain Corner