

### Christian Science Lecturer Appears For Medford Talk

Jean M. Snyder, CSB, Buffalo, N. Y., a member of the board of lecturership of The Mother Church, The First Church of Christ, Scientist, in Boston, Mass., spoke at the Junior high school auditorium here Friday.

The lecture was entitled "Christian Science: The Living Light of Christ, Truth." The lecturer spoke substantially as follows:

The human race is seeking a way out of its difficulties, searching for a solution of its problems, pursuing in devious material ways what it regards as its good, but mankind's most universal need is to know God. Whatever the problem, be it mental, moral, physical, financial or economic, national or international, the one and only effective solution is a practical, workable knowledge of God and His laws, an understanding of the allness of God and the consequent nothingness of evil or error in whatever form it seems to appear.

As men desire to know God and turn to Christian Science for enlightenment, instead of clinging to a blind faith in God, they attain a demonstrable knowledge of Him which spiritualizes their thought, for the things of Spirit are then seen to be real and the objects of sense unreal.

Christian Science offers the world healing by presenting the true concept of the true God and His creation. Mrs. Eddy, the Discoverer and Founder of Christian Science, gives this clear and appealing definition of Deity in the Christian Science textbook, "Science and Health with Key to the Scriptures" (p. 465): "God is incorporeal, divine, supreme, infinite Mind, Spirit, Soul, Principle, Life, Truth, Love." Mrs. Eddy's only authority and source of inspiration was the Bible.

The Christian Science teaching that God, infinite Truth, is good means that all that is true is perfect and eternal. God's goodness evidences Love, Love divine. Love is expressed in perfection and harmony. Little children can understand that God is good, and they also learn that when they are good they are expressing God or Love, and that sickness is not good, and therefore is not real or true. The omnipresence of good precludes the presence or substance of anything unlike itself. Omnipotence precludes the presence of anything other than that of God, good. Omniscience precludes the possibility of a mind or intelligence other than that of God, good. Omnipresence precludes the possibility of a law or activity apart from God.

Jesus did not ignore evil; he destroyed it. He said he came to do the will of God, good. If evil were of God he could not and would not have destroyed it. Christian Scientists do not close their eyes to evil, but endeavor to see through its false claims to power. James, the apostle, says (James 4:7), "Resist the devil, and he will flee from you." Resist means "be proof against, exert oneself to defeat, counteract, or frustrate." Evil claims to work invisibly and thus manifest itself in human affairs. To preserve oneself and others from believing in the false claims of evil, even a gleam of the potency of God is effective. Spiritual power is recognized only through spiritual sense or understanding.

Christian Science teaches that all that seems real in materiality, that is, all material phenomena, are human concepts, or misconceptions of the carnal or mortal thought, or ignorant belief, which is enmity against God. And when you let that mind be in you which was also in Christ Jesus, just to that extent are you aware of the universe of God's creating, the phenomena of divine Mind. Christian Science will so illumine your thought spiritually that you no longer will see through a glass darkly, no longer

er will you believe that man, the beholder of God's wonders, could be the victim of false material sense. No longer will you judge by the hearing of the ear, but you will judge through spiritual sense, thus judging righteous judgment. "It is the spirit that quickeneth; the flesh profiteth nothing" (John 6:63).

### Portland Man Drowns In Large Vat of Whey

Portland—(U.P.)—Jennar M. Stal, 41, Portland, was found dead Saturday in a vat of whey at the Western Condensing company plant.

Another employee found the body floating in 6000 pounds of whey. The whey covered 50 inches of the vat which was 208 inches deep. Company officials told police the rest of the vat contained foam and it was Stal's duty to pour a foam-killer liquid into it occasionally.

A deputy coroner estimated Stal's body had been in the whey about 30 minutes. He said Stal, father of four children, might have suffered a heart attack before falling into the vat.

An autopsy will be performed, the coroner's office said.

### Metal Shortage Helps Romance in New Jersey

Palisades Park, N. J.—(U.P.)—Romancing couples got an assist from metal shortages and the high cost of labor when the amusement park here opened for the season.

The seats of the new cars in the "Tunnel of Love" were nine inches narrower to conserve metal and save construction costs. The boys and girls will be sitting that much closer together this summer.

Use Mail Tribune Want Ads

Lawn experts advise against using weed controls immediately after seeding. Wait until the grass is well started and has been cut a time or two, they recommend.

### MERCHANDISE THAT MAKES FRIENDS

- Matchstick Bamboo Draw Drapes
  - Venetian Blinds and Window Shades
  - Aluminum Awnings . . . In Colors
  - Aluminum or Galvanized Tension Screens
  - Trade Wind Motor Fans and Blowers
  - Automatic Wood Heating Systems
- FOR OLD OR NEW HOMES

Write or Phone for Estimates  
**HOME OWNERS SPECIALTIES**  
74 N. Main, Ashland Phone 7231

### Can you hear NORMAL SPEECH



at 30 FEET?  
20 FEET?  
10 FEET?



Just how close to normal is your hearing? You'd be wise to find out. And you can—privately, and without cost or obligation. We're scientifically equipped to measure your hearing. We'll give you a trustworthy report on its keenness—on its ability to give you the fullest enjoyment of music, plays and social life. This free Sonotone Service is yours for the asking. Avail yourself of it. Come in and see us—today!

**DON'T BARGAIN WITH YOUR HEARING—SEE SONOTONE FIRST**

C. R. Adamson, 839 E. Jackson, Medford, Ore.

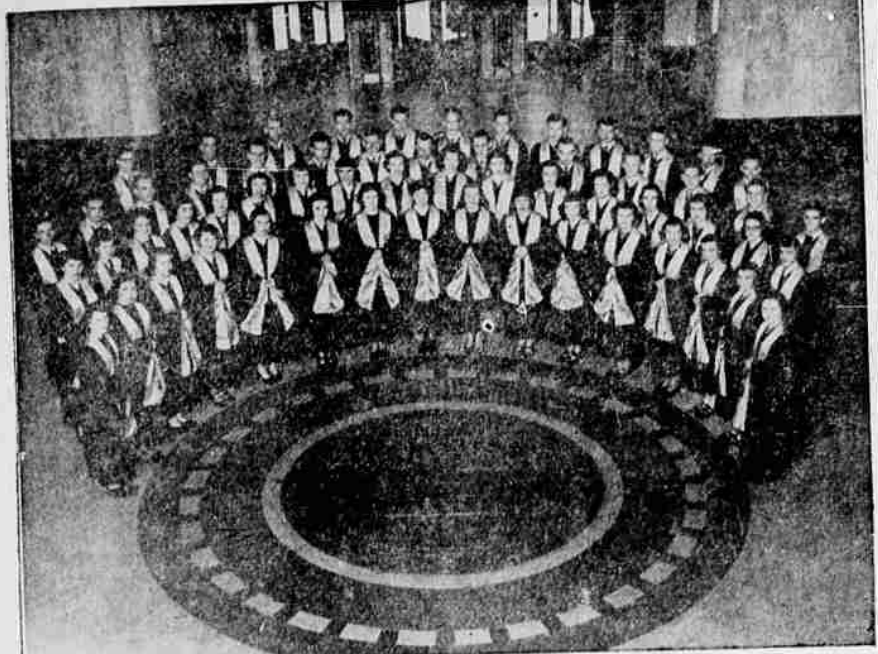
For as little as \$39.00—balance on easy terms

**SONOTONE—The House of Hearing**

Please send me your free booklet "Some questions you will want answered before you buy a hearing aid."

Name \_\_\_\_\_ City \_\_\_\_\_ State \_\_\_\_\_

Address \_\_\_\_\_



TO SING HERE MONDAY NIGHT—The Willamette university a cappella choir, pictured here in the foyer of the Oregon state capitol, will appear in concert in Medford at First Methodist church on Monday, April 14, at 8 p.m. Sacred and spiritual numbers will be featured. The choir, completing an extensive tour that took it into California, is regarded as one of the finest of its type on the Pacific coast. Melvin H. Geist, dean of the Willamette university school of music, is director.

### Electric Workers Delay PGE Strike for 60 Days

Portland—(U.P.)—An AFL Electrical workers strike against Portland General Electric company, originally scheduled for Monday, has been postponed for 60 days.

Union Secretary Robert H. Wooden said the strike was delayed because of progress in negotiations.

The union has asked for an 8.5 per cent wage increase.

### New English Machine Speeds Crop Planting

Salem—(U.P.)—If you are good, you can plant about 8,000 strawberry plants a day.

If you have a new mechanical planting device, you can plant 6,000 strawberry plants an hour.

The new machine was demonstrated Friday at the Mercer Emery farm in the Liberty area south of Salem.

The mechanical planter used in the demonstration was made in England. It has been used successfully also in planting a variety of vegetables, including celery, cauliflower and cabbage.

The machine planted 6,000 strawberry plants in the Liberty area. Cannery men said at a demonstration in the Gresham area earlier this week, it planted 10,000 strawberry plants an hour.

Dead line on Classified Ads 5:30 p.m. for following day, 10 a.m. Monday noon Saturday for Sunday & 11

# THE EASTER ETERNAL COME to CHURCH on EASTER

## AND Two Men Who Went To Heaven and Came Back

What Did They Say About The Place?

HEAR THIS TOPIC  
**TONIGHT**  
DOORS OPEN AT 7 p.m.

SOUND MOTION FILM AT 7:40 p.m.  
"Musical Moments With Sol Hoopii and His Hawaiian Guitar"

**FREE - 4 EASTER LILIES**

- Person Coming Farthest Distance
- Person Bringing Most People
- Largest Family Present
- Person Bringing Most People Who Have Never Attended Before

# LOOK!

## Hear These Topics Too!

- Tuesday, April 15 at 7:30—"DISCOVERED—A CROSS IN THE JEWISH TABERNACLE" (Mr. Metcalf will take you on a tour through this ancient tabernacle right on the stage—the most unusual thing you have ever seen!)—BEST SERVICE YET!
- Wednesday, April 16 at 7:30—Mr. Metcalf has been asked—"IS IT WORSE FOR WOMEN TO SMOKE THAN MEN?"—Hear Evangelist Metcalf take his Bible and answer this question publicly! (Free copy of the most unusual sermon ever preached will be given to all who attend immediately following the service).
- Thursday, April 17 at 7:30—"A TIME COMING WHEN PEOPLE WOULD GIVE A FORTUNE TO HEAR A SERMON!" (Don't miss this.)
- Friday, April 18 at 7:30—"THE LAW THAT DIED WITH CHRIST!" (This sermon packed full of interest. You'll never forget it. Be sure to come this night.)



Harold E. Metcalf from Washington, D.C.

# BIBLE AUDITORIUM

910 S. Central Medford, Ore.