

Breeding, Marketing of Rabbits Becoming Major Item in Farm Economy of County

Breeding and marketing of rabbits is becoming a major item in the agricultural economy of the Rogue valley. From a few commercial breeders, and a number of "back-yard" raisers, the breeding of rabbits for sale has grown to considerable proportions.

Much of this activity is due directly to the recent formation of two related groups — the Southern Oregon Rabbit Breeders association, and the Rogue River Valley Rabbit Marketing Association, Inc.

Progress Told
W. B. McCullough, Ashland, president of the breeders' group, last week told of some of the progress which had been made in the field. The marketing association was incorporated in January for \$10,000, of which about \$6,000 has been subscribed. Most of the stock is owned by 50 members of the breeders' group, and many of them take payment for rabbits in corporation stock.

Since January, the marketing association has been operating in a converted chicken brooder in Talent, owned by Lloyd Wells. It is equipped with a freezer box and all necessary sanitary facilities to comply with state laws on slaughtering. About 85 members market their rabbits through the group, and stock comes from Rogue River, Trail, Ashland, and other surrounding sections of the county. Another chapter of the breeders' association is located in Grants Pass.

Plans are now under way for construction of a new slaughterhouse, to be completed by next January.

Shio to San Francisco
Formation of the groups resulted directly from a new state law requiring rabbit sellers to have a "Class B" license. In the early stages of formation it was thought that outside markets would be developed, and for a time shipments were made to San Francisco, ranging from 1,000 pounds per week up to a carload. But increased demand and development of markets in southern Oregon and Northern California, as far south as Redding, now keeps most of the product closer to its origin.

As a standardization increased and demand was stimulated, prices have gone up to where they are now about 23 cents per pound live weight. The group processes from 500 to 700 pounds a week now, and hopes to increase to 1,500 to 2,000 pounds of meat a week. New breeders are being sought for this purpose.

Receive Profits
Producers who hold bonds in the marketing association are paid interest in proportion to the group's profits. They also receive a bonus payment for weight produced.

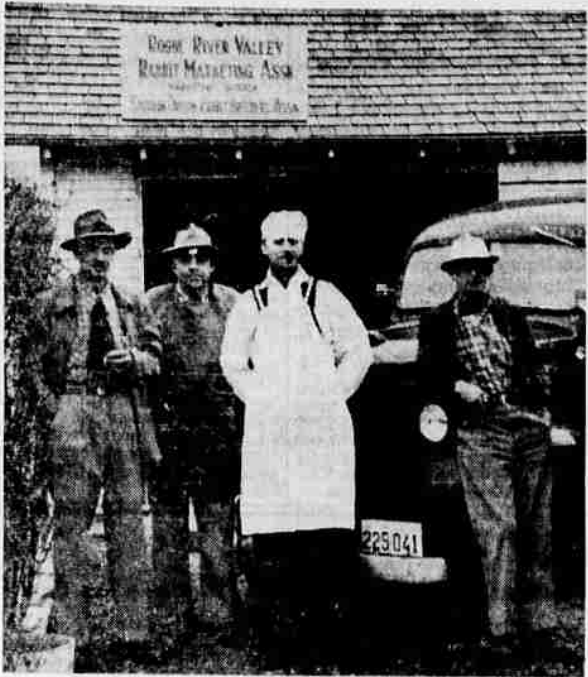
The breeders' association, in addition to giving technical information and breeding and raising help, is also a social group, and sponsors potluck dinners each two months, with motion pictures or outside speakers appearing on the programs.

The next meeting, May 8, will feature a talk by Joe Barker, a rabbit judge.

Most of the rabbits purchased by the association are new Zealand whites, which have good meat characteristics and the white fur most desired by dealers. They are slaughtered at about eight weeks, and usually weigh from four to four and a half pounds. The time taken to raise the animals has been cut down in recent years by developing in feeding techniques. The association has developed a special feeding grain pellet, which makes the rabbit grow faster and fatter, on less feed.

Nearly All Bred
Nearly 100 per cent of the county's commercial rabbit breeders belong to the association, and since the group was formed, production of rabbits in the valley has nearly doubled. They are now being raised at a rate estimated at 60,000 or 70,000 per year, which may be doubled again by fall.

At the last meeting of the breeders' association, discussion of future plans included a proj-



RABBIT BREEDERS-MARKETERS—Pictured above are men active in the recently formed Rogue River Valley Rabbit Marketing Association, the marketing corporation of the Southern Oregon Rabbit Breeders association. From left they are W. B. McCullough, president; L. D. Wells, manager; L. L. McCoy, butcher; and Bob Jones, distributor. In the rear of the picture is shown the temporary quarters of the processing plant of the association, and at the right Jones' truck with which he takes rabbit meat to many sections of southern Oregon and northern California.

Housewives Resisting Higher Beef Prices

Chicago, Apr. 29 — (U.P.) — Housewives across the nation were reported today to be resisting higher and higher prices for beef.

Livestock market analysts blamed the spiraling prices on farmers who held cattle on pasture to force prices up.

Choice cuts of beef sold at about 20 cents higher than they did a month ago.

Round Steak Up
In Chicago, porterhouse steak carried a \$1.09 price tag, compared with 89 cents last month. Round steak was up 20 cents in Chicago over the 69 cents a pound it sold for a month ago.

Although all cities surveyed by the United Press showed an increase over last month, the jump was not so marked else-

where as in Chicago. Porterhouse in New York sold for 93 cents, up six cents; in San Francisco it was up two cents.

"We feel we'll meet some heavy customer resistance in the next week or two because we have to pass on higher prices to the consumer," a Chicago Kroger executive said.

Midwest markets just didn't have the cattle. The agriculture department said only 11,000 cattle came to market yesterday

compared with 31,500 a month ago.

Lamb Prices Higher
Lamb prices were up their usual four or five cents for this time of year due to the switch from fall to spring lambs. The fall lamb supply was nearly exhausted while the spring animals were not yet ready for market.

Pork prices, although slightly higher, were not significant because the increase was "a regular price fluctuation."

On the wholesale level, beef prices rose \$2 per hundredweight during the past week.

Education on Cancer Given Boost by Funds

Nearly two and a half million dollars is being spent by the American Cancer society on education this year, according to Mrs. John S. Day, Jackson county chairman of the society.

The group will spend \$721,000 on professional education, and another \$373,000 on public education. In addition, Mrs. Day reported, the various state divisions of the society, including the one in Oregon, have allocated some \$1,295,000 for educational purposes.

The society's aim in the programs is to get patients to physicians early enough to permit a cure, she said, and to see that the medical profession has the information necessary to make every doctor's office a cancer detection center.

In 1949, Mrs. Day pointed out, at least one-third of the 200,000 persons who died from cancer could have been saved if they had visited physicians sooner.

Army Instructors to Tell of Service Units

A visiting sixth army instructor headed by Lt. Col. Frederic F. Wolfer, will tell of current developments in field operation of service units at a meeting of the organized reserve of the army, and the national guard next Tuesday at 8 p.m. The meeting will be in the federal building on Sixth street and Riverside avenue.

comparing with 31,500 a month ago.

Lamb prices were up their usual four or five cents for this time of year due to the switch from fall to spring lambs. The fall lamb supply was nearly exhausted while the spring animals were not yet ready for market.

Pork prices, although slightly higher, were not significant because the increase was "a regular price fluctuation."

On the wholesale level, beef prices rose \$2 per hundredweight during the past week.

Unemployment Falls 12 Per Cent From March Level

Washington, Apr. 29 — (U.P.) — Unemployment fell more than 12 per cent this month with the spring perk up of the nation's industries and farms.

The census bureau reported that the number of unemployed in April dropped to 3,515,000 as compared with March's level of 4,123,000.

At the same time, the number of employed rose 1,117,000 to the highest level in five months. It was estimated that 58,668,000 persons were employed in April as compared with 57,551,000 in March.

Above Anticipation
Secretary of Commerce Charles Sawyer said that "welcome gains of the past two months are probably greater than were generally anticipated."

"It is noteworthy," he said, "that both employment and unemployment are back to the levels existing before the mid-winter curtailment in activity."

Sawyer referred to the eight and one-half year peak of 4,684,000 unemployed persons in

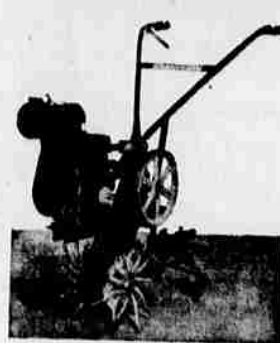
February. The April unemployment figure was the first to drop below the 4 million mark this year.

Dead line on Classified Ads: 5:30 p.m. for following day; 10 a.m. Monday for Monday; noon Saturday for Sunday a.m.

FROM VACATION
Camp White, Apr. 29 — Miss Grace Stuhr, chief nurse here, is back from a vacation spent in Portland and Vancouver. Miss Stuhr combined business with pleasure and was absent from duty just one week.

The U. S. state department was established as the department of foreign affairs, in accordance with the act of July 27, 1789. Less than two months later, on Sept. 15, 1789, the name was changed to the present department of state.

Here's The Thing For Your HOME GARDENING



The Amazing New **MERRY TILLER**

80 Now In Use In the **Rogue River Valley!** **STURDY-ECONOMICAL LABOR SAVING!**

Operates for Less Than 10c an Hour

A sturdy, light weight motor driven cultivator that will do a job that no other similar machine will do, and with a minimum of effort.

It is so light and easily handled that a woman can operate it without difficulty and can be moved under its own power to the job without injury to lawns or walks.

It can be used in flower beds and among shrubs to thoroughly mulch the ground or to prepare new ground for flower beds or garden.

It is ideal for general cultivating between rows and around plants and for mixing fertilizer with the soil; for potting beds or general garden work.

It cultivates rows from 12 inches up and to a depth of 10 inches and operates efficiently in all types of solid or rough terrain. Additional rotors may be attached to increase the tilling width to 24 inches.

It cultivates close up to trees, walks, shrubs, buildings, etc. It is a complete all purpose piece of equipment for nurserymen and gardeners.

Let Us Demonstrate in YOUR Garden!

VALLEY EQUIPMENT CO.

Pacific Highway South—Dial 2-9441

SOLVE...

SPRINKLER IRRIGATION'S TOUGHEST PROBLEM WITH

THE NEW STOUT

ALSO TRACTOR and HAND MOVE

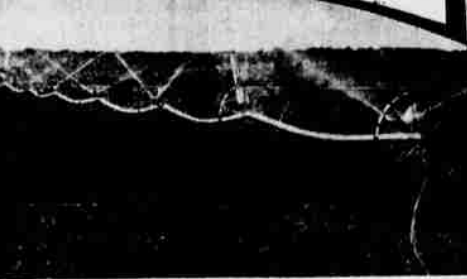


This revolutionary development in sprinkler irrigation allows one man to move 1/2 mile of pipe at one time in a matter of minutes... after pipe is automatically drained through patented valves! Ends hard labor and high costs of moving pipe by putting your system on wheels.

AUTOMATIC DRAINING
The STOUT WHEEL MOVE SYSTEM is drained automatically through patented drain valves once the pressure is cut off. Lines will drain to permit moving in approximately 5 minutes. Weight of line is thus reduced to a point where it can be easily moved as a section by one man.

SAVES LABOR
Prior to the development of the STOUT WHEEL MOVE SPRINKLER IRRIGATION SYSTEM the hard labor and costs of moving pipe often overshadowed many of the benefits and conveniences derived from sprinkler irrigation.

Free Estimates Gladly Furnished Expert Engineering Service



STOUT WHEEL MOVE IRRIGATION is available for any new installations, large or small... yet has been designed to permit easy conversion from any present hand-move system... through use of the STOUT Converter Coupler. Conversion from a hand-move system to a new, labor saving STOUT WHEEL MOVE SYSTEM DOES NOT require purchase of new pipe.

GOOD USED PIPE Now Available For Your Sprinkler System at BARGAIN PRICES!

Have YOU Seen the New FREEMAN

Automatic TWINE-TIE PICK-UP BALER?

ONE MAN

Bales Up To SEVEN Bales Per Minute

Fewer Moving Parts Simplified, Compact Design!

One man on the tractor can bale hay from the windrow up to 7 bales per minute, and 10 tons per hour, depending on the type and quantity of hay, and ground conditions. Floating on spring tension, the pick-up drum does a clean job... even on rough ground or in crossing irrigation borders or levees. Driven by bull gears, the sweep fork operates 50 strokes per minute in time with plunger, pushing hay from the top of pick-up directly into bale chamber on every stroke. As the plunger is on backstroke, the feed fork

pushes hay into the chamber and as the plunger compresses, cutting knife slices the hay, and fork returns to pick-up and...

Baler is designed for maneuvering in the field and moving on road. Overall width only 98 inches.

Baler is compact and low, a man on the tractor can look back over baler to see knotters and practically the entire operation of machine. Types of bales being turned out can be quickly noted, and whether adjustment to bale tension is necessary due to changing conditions of the hay.

Demonstration TUES. MAY 2
Boe's Place near Mond Desir—Central Point
STARTS 4 P. M.

VALLEY EQUIPMENT CO.

Pacific Highway South—Dial 2-9441
PLENTY OF PARKING SPACE AT ALL TIMES

DEPENDENCY DESTROYS CHARACTER

Dependency DESTROYS HUMAN CHARACTER!

THE CHARACTER OF OUR PEOPLE is the strongest asset of our nation, and making sickness and idleness too easy places a premium on the destruction of character.

Loss of time through sickness troubled in some countries, under such systems. America averaged about 6 1/2 days, in sickness per person per year, before the war—England averaged 12 1/2 days, and was on the increase.

If you want less sickness, keep Doctors free of political domination. Kill plans that create neurotics, and weaken the "will to stay well and get well."

Western THRIFT PHARMACY
13 N. Central Phone 2-2174
MEDFORD, OREGON

SEEK BETTER HEALTH THE VOLUNTARY AMERICAN WAY