

# PENNEY'S 48<sup>th</sup> ANNIVERSARY!

## STOP SHOP SAVE

**PENNEY'S WORK CLOTHES ARE BUILT STRONGER--LAST LONGER**  
NO "SECONDS" NO "IRREGULARS" NO "IMPERFECTS"



### MEN'S FIRST QUALITY BLUE CHAMBRAY WORK SHIRTS

MAN THIS PRICE IS WAY, WAY DOWN

**1.19**

Penney's knows how to save you money! Here's proof. Sanforized! blue chambray shirts with lined collars for comfort . . . two roomy chest pockets. It's cut generously full in the dress shirt style. Take home all you want. 14-17.



### BIG MAC COVERT WORK SHIRTS

Big Mac\* Sanforized! gray covert shirts take terrific wear. They're cut full, two flap pockets, dress type collar. Sizes 14-17.

**1.49**

### PLAIN COTTON WORK SOCKS

Ribbed top solid colors cotton socks for work. Two ply heel and toe for extra wear. No uncomfortable seams. White gray, black or cordovan. 10-13.

**25c PAIR**

### Men's Mesh Braid STRAW HATS

Thousands of tiny air holes let breezes in. Smart pinch front with contrasting pleated band. Linen tan, leghorn, putty. 6 3/4 to 7 1/2.

**1.98**

### MEN'S RUGGED ARMY TWILL SHIRT & PANTS MATCHED SET

FULL CUT, RUGGED PANTS,

**2.49**

KHAKI COLOR

DRESS STYLE SHIRTS

**2.98**



SILVER GRAY MATCHED SETS  
Shirts **2.49**  
Pants **2.98**

### UNLINED HORSE-HIDE LEATHER GLOVES

Cream grain horsehide work gloves with a tape and ball fastener. Horsehide stays pliable after wetting and these are man-sized . . . cut full throughout.

**1.49**



### COTTON TWILL "Baseball Type" Sport Caps

Great all-purpose caps for men, boys, and girls. Water repellent and Sanforized! Air vents in crown, green undersiv. Bro. range of sizes and colors.

**79c**



Boys' Sizes Also **79c**

### SUMMER-WEIGHT UNION SUITS

Short-sleeved long legged union suits in summer-weight. Full cut for comfort. Ecru and white. Sizes 36 to 46.

**1.49**

### Men's Underwear

SHIRTS—Fine Swiss ribbed cotton. 36-46 . . . **49c**  
SHORTS—Woven stripes, with gripper fasteners, elastic sides. Sizes 30-44 . . . **59c**  
BRIEFS—Sturdy combed cotton, elastic waist. 30-44 . . . **59c**

### Men's Cotton T-Shirts

Sizes 36 to 46 **69c**  
Snowy white combed yarn cut extra full to insure plenty of comfort. Tailored neck, with hemmed bottoms to prevent curling. Sizes 34-46.

### RUGGED WHITE Canvas Gloves

Tough canvas gloves with knit wrists . . . roomy finger lengths so they won't bind. Ruggedly stitched superbly made for long wear. Buy 'em by the dozen.

12 oz. **29c**

8 oz. **19c**



### PAYDAY\* BIB OVERALLS

Extra heavy Sanforized! blue denim cut in the square back style. Union made, parva buckles, bar-tacks at all strain points. Plenty of pockets. Sizes 30-46.

**2.79**

Express Stripe also . . . **2.79**



### 11-Oz. Waistband Overalls

Snug 11 oz. Sanforized! denims. Yoke back, copper plated rivets at strain points and double orange stitching. 1 watch, 2 front and back pockets. **29-42.**

**2.49**



### WASHABLE COSSACK JACKETS

Sanforized! vat dyed carded cotton poplin that's zelan treated to resist water. Quick zip front, elastic webbing across back for snug fit. 6 colors. S.M.L.

**3.57**



### WHIPCORD Work Pants

Forest green or oxford gray 11 oz. whipcord pants give heavy duty performance. They're Sanforized!, cuffed, and famous Big Mac\* quality throughout. 30-42.

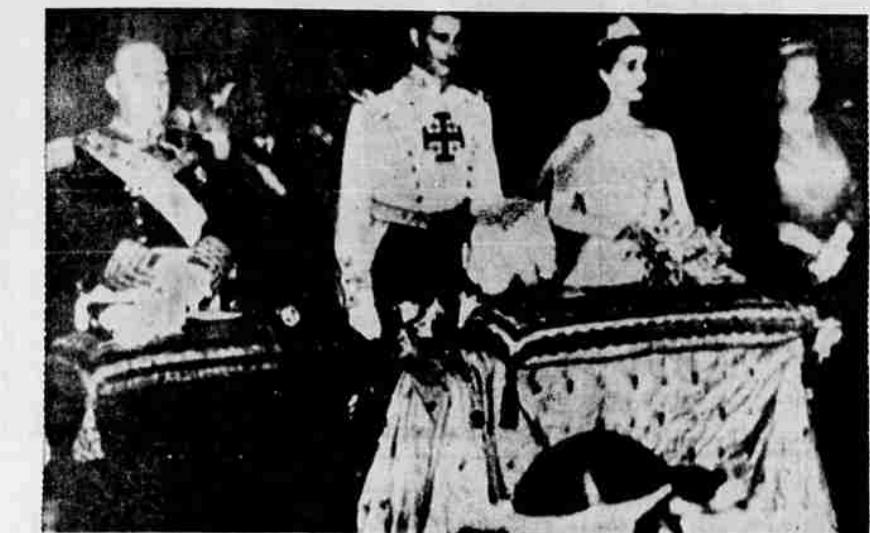
**2.79**



### LEATHER PALM Work Gloves

This glove is roomy and rugged! Gray side split leather palm, full leather thumb, leather finger tips, leather knuckle strap and striped canvas back.

**1.19**



**FRANCO'S DAUGHTER WEDS NOBLEMAN**—Generalissimo Francisco Franco (left) gives his daughter, Carmencita (second from right) in marriage to the Marquess de Villaverde, Christoval Martinez Bordiu (second from left) in ceremony performed in chapel of Franco's El Pardo palace in Madrid, Spain. At right is Marchioness Arguillo, mother of the bridegroom. Photo telephotographed from Madrid to London then radiotelephotographed to New York.

### Land Management To Employ Two New Men

Portland, Apr. 25—Michael R. Hanger has been named forest economist and Robert E. Wolf appointed appraisal specialist for the bureau of land management regional office here. Regional Administrator Daniel L. Goldy said Hanger will represent the bureau in studies in cooperation with the Oregon forest products laboratory.

Greenland's Cape Morris Jessup, 440 miles from the North Pole, is the northernmost known land point on earth.

### OVERJOYED! YEARS OF LAXATIVE DOSING ENDED!

"I had to write! After 25 years of dosing for constipation, I started to eat ALL-BRAN for breakfast. The results are wonderful!" Andrew H. Truby, Box 42, Woodland, Ill. Just one of hundreds of unsolicited letters from ALL-BRAN users. Marvellous results can be yours, too, if you suffer from constipation due to lack of dietary bulk. Eat an ounce of tasty Kellogg's ALL-BRAN daily, drink plenty of water! If not completely satisfied after 10 days, return empty carton to Kellogg's, Battle Creek, Mich. GET DOUBLE YOUR MONEY BACK.



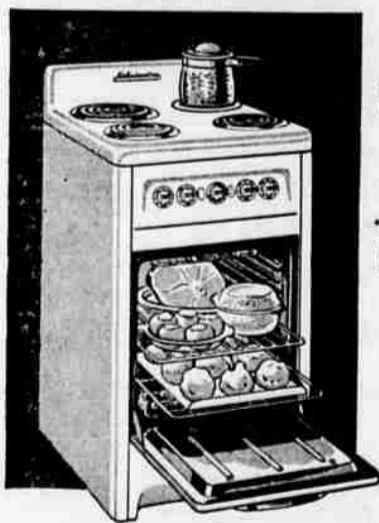
### HERE IT IS!

## THE BIG BUY FOR SMALL KITCHENS!

Amazingly efficient, new

# KELVINATOR

COMPACT ELECTRIC RANGE



Kelvinator Model ER 541 . . . ONLY **\$164.95**

OTHER MODELS PRICED FROM

\*Prices shown are for delivery in your kitchen. Installation, if any, state and local laws extra. Prices and specifications subject to change without notice.

- ★ Large, Fast Heating Deluxe Radiant Broiler!
- ★ Automatic Oven Pre-Heat, Cut-off Control!
- ★ 7-Heat Surface Units . . . FIT All Utensils!
- ★ Surface Units Tilt Up, Stay Up for Easy Cleaning!
- ★ Flush-to-the-Wall Installation!

Highest Kelvinator Quality, Extra-Value!

Here it is! The electric range made to order for small kitchens . . . for saving space . . . for turning out big meals with the efficiency of ranges double its size! The same big, 2-unit oven you'd get in Kelvinator's finest range! Four surface units, fingertip-controlled for seven heats from low simmer to extra-fast! You get fast, cool, clean electric cooking . . . precise results . . . Kelvinator's rugged construction and streamlined, easy-to-clean beauty! See it now!

Get the Speed! Get the Features! Get the Buy!  
**Get Kelvinator**  
**ZACK'S APPLIANCE CO.**  
220 WEST MAIN — PHONE 2-5970

### Jackson County Farm Notes

Compiled by County Office O. S. C. Extension Service

#### European Red Mites Will Injure Leaves

European red mite eggs have now hatched, and where the infestations are severe it will only be a short time until the new leaves will be injured. Where dormant sprays are applied, control of these mites should be good enough so that further sprays will not be needed until the first cover. Where any trees have been grafted, however, it would be well to check the young shoots to be sure they were not being ruined by the mites. Frequently on trees which have been grafted, the mites will congregate on the young shoots and feed so heavily that the grafts can not grow properly. Control of these cases would be very easy. Spraying these grafts with parathion at the rate of one pound in 100 gallons would give control for the season.

The over-wintering two-spotted mites are also out in large numbers now and feeding on new growths. In some cases these mites are present in large enough numbers to be causing injury. Where any injury is noted it would be well to apply a spray for control. Where only a few mites are present, then the spray need not be applied until the first cover. It is anticipated that the first cover spray will probably need to be completed in the neighborhood of May 15.

Forsythia bushes, which have been so colorful during the past

few weeks when they were in full bloom, are now past their prime and should be pruned. The forsythia will produce flowers next year on wood which is produced this year. In order to force the bush to throw out a lot of new growth it is necessary to prune it rather severely now.

This pruning should consist of the complete removal of most of the long flowering shoots and the severe cutting back of the remainder. The short shoots and spurs in the interior of the plant should be left in, as they will again be covered with bloom next year and will give the bush more of a solid effect.

C. B. Cordy, County Extension Agent Horticulture

#### Control of Flies Around Farm Buildings Difficult

Control of flies on livestock and around farm buildings is becoming increasingly difficult because the population of DDT resistant flies seems to be building up. DDT will still be the most popular material to be used on farm buildings and on certain types of livestock. However, it may be well to use some other chemicals as a supplement. These could be lindane or some of the pyrethrum sprays.

DDT and lindane should never be used on dairy cattle because the residue carries through to the milk. Dairy barns, however, can be sprayed with lindane.

Cattle should be sprayed with methoxychlor at the rate of one-half pound to five gallons of water. Caution to consider in using lindane on pigs or young animals of any type is to keep the strength of the solution very low. One and a half pounds per 100 gallons or less should be used, as it has a tendency to burn, and in some instances young animals have been killed from spraying with lindane solution. Generally no damage results from spraying mature animals with lindane so long as the solution does not exceed 1 1/2 pounds per 100 gallons of water.

Earle Jossy, County Extension Agent

#### Cattlemen's Association Developing Program

The Oregon Cattlemen's association is rapidly developing the program for the 1950 annual meeting to be held in Klamath Falls on May 8, 9 and 10. President O. D. Hotchkiss has announced the committee chairman and secretary for some 10 committees that will go into executive session on May 8.

Those stockmen particularly interested in legislation, taxation, game and wild life, public lands, national forests, brands, animal diseases, bull sales, transportation and marketing, or other problems affecting livestock, are invited to sit in at these committee discussions.

The general assembly will start promptly at 9 a. m. Wednesday, with such noted speakers as President Loren Barnert of the American National Governor Douglas McKay, Sprague Carter of Pendleton, Ben Day of Gold Hill, appearing on the program.

Swine growers of Jackson county will have an opportunity to see how hogs are raised on a few farms on May 19. An all day tour is being arranged by the Extension office for the principal purpose of studying best methods of housing, equipment, sanitation, pasture utilization and other good management practices. Many of the points emphasized may be observed on the farms visited. Each owner will outline his program and give his reasons for the particular operation carried on. H. A. Lindgren, extension livestock specialist, will comment on the needs for more attention to certain practices. The tour will start at the A. T. Lathrop Purebred Berkshire farm of Central Point at 9:30 a. m. Friday, May 19.

W. B. Tucker, County Extension Agent

### HOT FLASHES?

Are you going thru the functional "middle-age" period peculiar to women 38-45 yrs.!? Does this make you suffer from hot flashes, feel so nervous, high-strung, tired? Then so try Lydia E. Pinkham's Vegetable Compound to relieve such symptoms. Pinkham's Compound also has what Doctors call a stomachic tonic effect.

LYDIA E. PINKHAM'S VEGETABLE COMPOUND