

### Advisory Committee to Be Named for City Park Tasks

Plans to place in the hands of an advisory committee the task of determining a name for the new city park east of Bear creek were announced by Mayor Diamond Flynn last night at the regular meeting of the city council.

He stated that he probably would submit his committee selections for council confirmation on April 4. The citizen's group also may be retained to plan the dedication ceremonies for the park and to advise the council on park operation for the remainder of the year, Flynn said.

**Up To Council**  
Reporting on a recent meeting of city officials and individuals who contributed funds to buy the park area, Flynn said

### Ashland School Mill Rate To Stay Same

Ashland, Mar. 22.—Tax millage in the Ashland school district will remain approximately the same as the result of action taken this week by the school board here, meeting with the citizens' school district budget committee.

The building fund on hand will be sufficient to pay for the three new buildings recently completed in the district. Bonds of the building fund will be retired under a program which will be completed by 1951.

The groups decided to open a sinking fund to meet future needs for building, and a "reasonable" amount will be added each year. Budget for the district this year will be presented to a vote of the district's residents in about a month.

### Prospect

Prospect, Mar. 22.—The second and third grades took a field trip to Jacksonville and Medford on March 20. While in Jacksonville they visited the museum. This fitted into their recent studies about the pioneers and Indians of olden days. In Medford they visited the Medford public library and Fluhner's bakery.

Besides the teachers, Mrs. Funk and Mrs. Sawyers, Mrs. Wayne Harris and Mrs. John Davidson accompanied the students.

Charles Fanger will be transferred from the Community hospital in Medford to the St. Vincent's hospital at Portland. He will leave by train March 24. Mrs. Fanger will accompany him.

PTA executive board held a meeting March 20 at the home of Mrs. Willard Huffman. Monte Middlebush, Marie Ragsdale and Don Robertson came home this week from college for spring vacation. They will return to Corvallis March 26, for beginning of another term.

PTA Study group meeting was held in the Home Economics room in the high school, March 21 at 2 p. m. A movie was shown on communicable diseases.

Junior class is sponsoring a movie "The Shocking Miss Pilgrim" Thursday, March 23, in the high school gym at 8 p. m.

Dee Neville returned home from college at Logan, Utah, March 19. Dee has been taking a course in electronics. He is temporarily employed by Burt Broomfield.

Mr. and Mrs. Jimmy Davis and son Melvin visited at the home of Mr. and Mrs. Elzer Watson, on the week-end of March 18 and 19.

Virginia Long came home March 19 for a three weeks' vacation. She plans to return to Portland April 8 or 9. She has just finished her first year of nurses training at the University of Oregon Medical school.

**LOTS OF O'GRADYS**  
Chicago (U.P.)—Holler "O'Grady" at DePaul university and the odds are, one of Mr. and Mrs. James J. O'Grady's sons will answer you. There are five of them enrolled: George, 18; Edward, 23; Donald, 21; and Richard and Robert, 20, twins.

Boston—U.P.—A total of 650,000 trout, all exceeding the legal length limit, will be put into Massachusetts streams and ponds by state authorities before the fishing season opens April 15.

### New Insecticide Proven In Tests Over Five Years

Why is lindane in headlines in garden magazines these days? Is it another bug-killer destined for a brief flurry of success and then oblivion after a few years? What makes home gardeners and horticultural editors coast to coast so excited about its discovery?

While it is true that other insecticides have been introduced with great fanfare during the post-war era, lindane has quietly been tested in farms across the nation since 1945. Thousands of tons of the lindane have been used successfully by farmers in controlling a wide range of pests.

**Now On Market**  
Now, during the spring season of 1950, it is hitting the market for the first time and is available to backyard gardeners. While no miracles are claimed for lindane, its backers quietly and confidently point to the fact that lindane is the first insecticide which has the advantage of killing insects three ways—by contact, by stomach poisoning, and by vapor action.

The fact that it leaves a residue which still continues to efficiently kill bugs four to 12 days later after the original application is one of the reasons for its quick and sensational acceptance by home gardeners of America.

Another "first" for lindane is the fact that it makes available to home gardeners a fairly simple way of getting rid of soil pests. It can be dusted on the ground around young vegetable plants or flowers with equal ease and will destroy wireworms and many common types of soil pests.

**Multi-Purpose Dust**  
A 1950 multi-purpose dust containing lindane is responsible for killing effectively these 20 major garden problems: aphids, thrips, leafrollers, caterpillars, flea beetles, white flies, cucumber beetles, leafminers, armyworms, webworms in lawns, ants, mole crickets, chinch bugs, cutworms, wireworms, white grubs, fuller rose beetle larvae, house flies, and mosquitoes.

Home gardeners may rightfully ask whether such a multi-purpose dust or spray is dangerous to use. The answer is that any spray or dust package containing lindane does not bare the familiar skull and crossbones on the labels which the law always insists on printing where ever there is danger of immediate poisoning. It has been generally

stated by various entomologists that lindane is as safe to use as the widely known pyrethrum and rotenone products. There is practically no danger to youngsters or pets when these products have been used, and that is one more reason why lindane has caught on with such sudden popularity.

**Killing Action Wide**  
Lindane is available under trade names in several garden sprays and dusts, usually in combination with several other tried and true tested insect and fungus killing ingredients which even widen the scope of killing action of common pests and diseases.

Compared to DDT, the insecticide which received such a world-wide buildup during World War II, lindane has a greater range of kill and is safer to use.

### Fence, Landscaping Project, Given Okay

Directors of Medford school district No. 49, in a brief meeting last night, approved construction of a steel fence between Lincoln school and adjacent private property and agreed to spend \$50 for a tentative survey by a landscape architect at all the city's school buildings.

In a meeting that lasted less than an hour, the board also accepted the resignation of six teachers that were first submitted at the last meeting.

Superintendent E. H. Hedrick told the board that a property owner next to Lincoln school would stand half the cost of putting a steel link fence between his lot and the Lincoln playground. Chairman Ronald Rice asked the authority to retain an Ashland landscape architect for the purpose of determining the cost of a possible 10-year landscaping project. The board agreed that the architect's survey would be "tentative."

Harvey G. Brown, Ashland, today announced the establishment of a daily delivery service of fresh packaged vegetables to grocery stores in Talent, Phoenix and Medford. Supplier will be Mayfield's gardens, in Ashland.

The "Red-Serve" products are all attractively packaged in cellophane-type wrappings. Brown said, and are guaranteed fresh. They include all fresh vegetables in season, and packaged salads. Most quality stores in Medford will use his service.

Brown said he has a franchise with Mayfield for the area he serves.

### Odd Fellows To Meet At Jacksonville Soon

The Jacksonville IOOF lodge No. 10 will be host to a joint district convention of Odd Fellows from Lake, Klamath, Jackson and Josephine counties on April 1. Members from Roseburg, Canyonville and Glendale have also been invited.

The Jacksonville lodge is making elaborate plans to entertain the delegates during the all-day session. Conducted tours of historic points of interest around the town are being arranged for the morning and there will be a dinner and dance in the evening following the afternoon convention sessions.

The cheetah, fastest four-footed animal, has been clocked at more than 72 miles per hour.

**Fresh Vegetables To Be Delivered Daily**  
Harvey G. Brown, Ashland, today announced the establishment of a daily delivery service of fresh packaged vegetables to grocery stores in Talent, Phoenix and Medford. Supplier will be Mayfield's gardens, in Ashland.

The "Red-Serve" products are all attractively packaged in cellophane-type wrappings. Brown said, and are guaranteed fresh. They include all fresh vegetables in season, and packaged salads. Most quality stores in Medford will use his service.

Brown said he has a franchise with Mayfield for the area he serves.

### Bids Awarded For University Building

Portland, Ore., Mar. 22.—(U.P.) Awards of construction contracts totaling \$1,123,811 for a science classroom and laboratory building at the University of Oregon was made here yesterday by the state board of higher education through the building committee, which was empowered to make the awards.

Ross B. Hammond company, Portland, with a bid of \$669,829, was low bidder on the general construction contract. The L. H. Morris Electric company, Portland, with \$162,640, was low on the electrical contract, and Buchanan company, Portland, with \$291,542, was low for mechanical work.

Formal award of the contracts will await action of the state board of control and emergency

### BLINDNESS NO BARRIER

Planfield, N. H. (U.P.)—William Hendrick boasts that he's never broken a shell while collecting eggs from the 800 nests on his poultry farm. Hendrick has been blind for 31 years.

board, slated for a meeting later this week.

**HOME APPLIANCE CO.**  
invites you to join the celebration!

**Millionth GE CLOCK-RADIO Jubilee!**

**Free** WEEK END WITH FRED WARING  
A trip to New York for yourself and companion  
2 days at the Waldorf-Astoria  
A party with Fred Waring's Pennsylvanians  
A complete Spring wardrobe for the winner  
The original MILLIONTH G-E CLOCK-RADIO

Nothing to buy, nothing to write! Just come in today for your official entry post card. We'll even mail it for you! Entries must be in before midnight, March 31, 1950.

Join the fun! Help us celebrate the MILLIONTH G-E Clock-Radio—the world's most useful radio! Gives 7 amazing services at the price you'd pay for a radio alone! It's not only a fine-tuned radio and a dependable G-E electric clock but also lulls you to sleep, wakes you to music, turns appliances on and off, reminds you of appointments—*automatically!* Even tells time in the dark. See the new models today



**\$37.95**

Model 505—Rich rosewood plastic cabinet.

You Can Put Your Confidence in GENERAL ELECTRIC and the

**HOME APPLIANCE CO.**  
115 E. MAIN PHONE 2-4585

The Beer with the MILLION DOLLAR FLAVOR

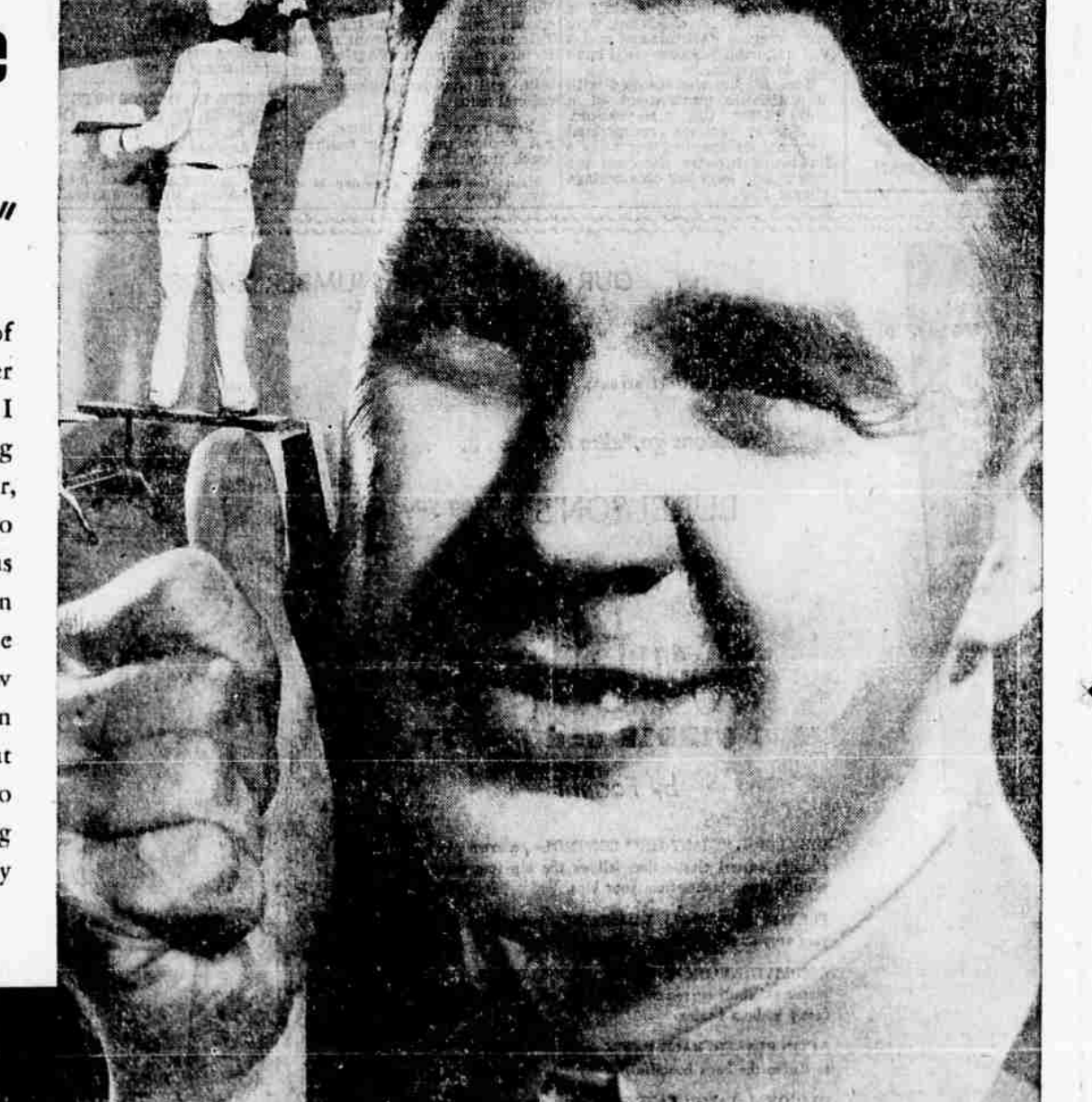


Age Mellowed LUCKY LAGER

Distributed by I. A. FISCHER  
53 Summit Ave. - Ph. 3-1792  
Medford, Oregon

## Winter Damage had us "snowed under"

It was bad enough to have the roof leak, but it had to pick a spot over our bedroom. Before Marge and I realized it, the plaster on the ceiling was ruined—some of the wallpaper, too, of course. The repairman who came to make the estimate put us next to a Home Improvement Loan through our bank. Sure enough, the First National Bank showed us how we could have repairs made when they are needed and pay for 'em out of future paychecks. A good way to keep a bad situation from getting worse—and certainly a great worry off our shoulders!



TRY THE TRAIN!

**Overnight to PORTLAND or SAN FRANCISCO**



On your next trip to Portland or San Francisco try our convenient overnight trains. Leave any evening; arrive at your destination next morning. It's as simple as that. Ride in roomy standard Pullmans or in comfortable coaches. It's the easiest and safest way to travel. Saves time and money, too. Overnight service returning, also. For fares and schedules call:

**S.P.**  
The friendly Southern Pacific

F. G. MORRIS, AGENT  
Phone 2-2846

MEDFORD BRANCH

**FIRST NATIONAL BANK**  
OF PORTLAND

Open 10 to 5 including Saturday

"LET'S BUILD OREGON TOGETHER!"