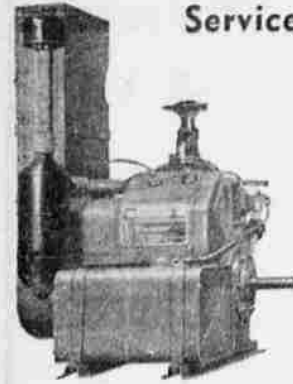


The air-plus-rail service makes it possible for more than 25,000 cities and towns in every corner of the United States to enjoy the benefits of air express service.

SOCIETY and CLUBS

Sales & Service



Eatherton's FARM STORE

808 So. Riverside Phone 3146

TIMEPIECE FACTS

Q. What do you do when you overhaul a watch?
A. When I overhaul a watch, it is completely disassembled and as each part is removed, it is inspected thoroughly, and if in my opinion it will not function as it should, it is repaired or replaced. Then all parts are thoroughly chemically cleaned, rinsed, and dried by heat to remove all traces of foreign matter and moisture. The watch is then carefully assembled, oiled and adjusted to position if necessary, electronically.
By this method I guarantee the watch as if it were purchased new and any part failing within one year is replaced free of charge, except for accidental damage. This service usually takes approximately 3 days.

J K's
Timepiece Specialties
215 Medford Center Bldg.

Notice To Orchard Owners

We Have For **\$5** Per HIVE **POLLINATION**

ORDERS MUST BE IN BY FEBRUARY 1

James Stewart C. W. Powell
Medford Eagle Point

Scout Executive To Visit Council; Plan Conferences

Miss Dorothy Calnin, Girl Scout regional executive from Seattle will be in Medford between Jan. 14 to 17 to review the work of the Girl Scout council. Miss Calnin met with various committees of the local council in September, giving instructions on national policies and procedures, and will now review this training for new council officers and members and make plans for spring and summer activities for girls of all ages in Scouting.

Eleven meetings have been arranged for Miss Calnin by Mrs. Scott Davis and Mrs. Rollin Jones, local council commissioner and deputy. Monday morning Miss Calnin will confer with Mrs. Marjorie Hopkins, local executive director, with the finance committee chairman, Mrs. Allen Perry, Monday noon and will meet with the general council Monday afternoon, this to be followed by a camp committee meeting of which Mrs. Everett Faber is chairman.

Her Tuesday schedule is 10:30 a. m., training committee, Mrs. Arnold Bohner, chairman; 3 p. m., membership and nominating committee, Mrs. John Larwood, chairman; Wednesday, 10:30 a. m., program committee, Mrs. C. A. Thatcher, chairman; 1:30 p. m., steering committee, Mrs. Rollin Jones, chairman; 3 p. m., public relations committee, Mrs. L. A. McCormick, chairman.

Thursday morning an informal social meeting and "brunch" will be held with all Girl Scout leaders and committee members meeting with Miss Calnin to learn about the training courses offered to Girl Scout volunteers and national training courses. It is thought Miss Calnin, a former Brownie specialist for Seattle, will have many suggestions for local Brownie leaders.

Party Saturday Eve
A birthday party honoring members of the Fraternal Order of Eagles Ladies Auxiliary who have birthdays in September, October, November and December has been planned for Jan. 19 at 6:30 p. m. in the Eagles' hall.
Auxiliary members and their husbands are invited to attend and each member is to bring a salad or a hot dish.

Too Late to Classify

LOST—Black and white cocker spaniel year old female, near Prospect. Notify 611 South Riverside, Medford, or Box 63, Prospect, or phone 2737. Reward.

SAUERKRAUT—12c qt. All brands tall can milk 10c each. Pure lard and toilet paper, no limit. Can goods by can or case. Fresh eggs 40c doz. Why pay more? Open Sundays 9 a. m. to 8 p. m. Ellis Grocery and Feed Store, 740 Crater Lake Hwy.

120 ACRES—2 acres in alfalfa; 8-room house; 3 barns; 2 chicken houses; free range on Applegate. Price \$1800. 5 ACRES fine land, free water; 7 room modern home, in Eagle Point. \$7800.
L. J. REED, Broker
28 South Central

FOR TRADE—1935 Plymouth Deluxe coupe with radio and heater, for '39 or later 3-passenger Plymouth. Will pay difference, 1 mile south of Phoenix, Paul Froehrich.

FOR SALE—Table Model radio-phonograph combination completely overhauled, all new tubes. Call 6072.

FOR SALE—One 25-35 Win. rifle; one late model 12 gauge Rem. auto. shot gun. One 21 jewel Illinois watch. 1908 W. 11th St.

WISH TO BUY OR LEASE—A MINERAL SPRING that can be developed. Write, giving price, location and details. Rt. 24, Christen, 8260 S.E. 32nd, Milwaukie, Oregon.

FOR SALE—Steinheil upright piano. Phone 7375.

SPECIAL on 3-year Hale peach trees. Get them while you can. Park Landscape Co., Rt. 1, Box 304, Rogue River, Ore. 1/2 mile up west bank Evans Creek.

TAMM SURPRISED the quality and size of your nursery. We did not know there was anything like it in southern Oregon. That's what every nurseryman visits our yard. Won't you come out and make your spring selections now? Park Landscape Co., 2 1/2 miles west bank of Evans Creek, Box 304, Rt. 1, Rogue River, Ore.

RETURNING TO RANCH—If you want a nice house on wheels, lots of room, built-ins, call at Conk's Second Hand Store, No. Riverside, at once. If our price doesn't suit you, name your own. Phone 4036.

WOOD FOR SALE—Old growth fir immediate deliveries. Phone 2348.

FOR SALE—Poligreed Barred Rock roosters. Phone 1524; Central Point.

\$4000—Business location on 99 highway, close to Medford. New 3-room modern house, large garage, bath, toilet, etc. Suitable for a small court or store. Let's look this over.

\$5750—33' acres, 4 1/2 miles from Medford. 4-room modern bungalow house, good barn, milk barn, 2 good chicken coops. Terms and possession now. Not irrigated.

\$5500—20 acres, all irrigated, 2 1/2 miles from Medford. Small down payment. Balance easy. Several nice vacant lots just out of city limits ranging in price from \$75 to \$125 per lot.

Also 12 1/2 acres one mile from Medford. Large modern house, nice hild. site, shade trees, sell or trade for house in Medford. Call us about this.

HARRY LONG, Realtor
Corner So. Riverside & Stewart Ave.
Phone 9222

\$6500
100 feet of river frontage, 1/2 mile deep, on Highway 99. Modern house 7 miles this side of Grants Pass.

\$25,000
30 acres best land money can buy; large 8-room modern house, basement, furnace, barn and other buildings, Johns Central Point suitable for subdivision. Owner will sell any part.

\$5500
Four-bedroom house, close in; corner lot, nice neighborhood; close to schools and churches.

\$5000
Attractive modern cottage, close in; living room, kitchen, breakfast nook, bedroom, bath, service porch with laundry tray, double garage, storage place. House is fully furnished with good furniture, refrigerator, electric range, etc. Lot fenced and lots of shrubs, fruit, flowers. All in excellent condition.
ELMER HERBEL, Realtor
44 N. Riverside, Dist. 2387 or 3172

FOR SALE—3 bedroom house, suitable for small business, \$5,250, terms P. J. Mitchell, Real Estate, Phone 6117, 208 Riverside.

FOR SALE—Late model Massey-Harris 101 Junior tractor and mower, all new tires, just overhauled. Can be seen at Shell Service Station, Gold Hill.

FOR SALE—Practically new men's Varsity-Towne suit, grey, glen-plaid, double breasted, size 38. Phone 9028.

FOR SALE—3 bedroom house. Possession in 15 days. 1016 E. Jackson. Comfortable, well-built home. Ross Lane, between Station KMED and Old State Road. 15 acre cultivated, good barn, chicken house, etc., \$16,000. Phone 6288.

WE NEED USED FURNITURE
For a Best Deal Dist. 4240
EADS FURNITURE, 11 So. Front

WANTED—To buy, a good family cow. High test, young. Will pay top price. Phone 6201.

FISHER'S finest grade rabbit pellets at Fabers, 24 S. Riverside.

WANTED—Nice, quiet, elderly lady for very light housework. More for companion than work. Phone 5409.

FOR SALE—By owner, 4-room modern house located on lot 63x160 on West side. House wired for electric stove, has two bedrooms, kitchen, living room, and shower. House needs repainting. Price \$2000. Contact owner at 29 So. Peach, phone 2014.

FOR SALE—Chester white boar, \$40. Phone 6137.

FOR SALE—A Wakefield baby buggy, very good condition. Phone 123, Jacksonville.

AUTO PAINTING—Steam cleaning. Summerville Mitchell Paint Shop, 608 So. Riverside.

FISHER'S CALF MEAL in 25 lb. and 100-lb. bags at Fabers, 24 S. Riverside.

FOR SALE—World bicycle, excellent condition. 124 King St.

FOR SALE—Electric battery brooder, at Fabers.

FOR SALE—By owner, fountain and lunch business, good location, fully equipped, shows good income. Rent reasonable. Can seat about 55 people. Plenty of room to expand. Must be seen to be appreciated. Tribune box 2232.

LOST—Saturday morning downtown, travelers checks, Serviceman Mario Maxima, Ph. 4226.

TO TRADE—Motel A Ford truck for pickup. Medford Fuel Co.

FOR SALE—20 acres Bear Creek bottom sub-irrigated, excellent alfalfa. House Modern 3 bed-room home with complete set of farm buildings. Phone 1241, Central Point.

NEW SHIPMENT Halen's Huski garden tractors and attachments now here. See at Cullen Motor & Implement Co., 123 S. Riverside.

ONE ONLY—6-foot tractor grain drill, one only, 6-foot heavy disc harrow, one only, 5-foot combine, 2 only, orchard dusters. Cullen Motor & Implement Co., 123 S. Riverside.

FOR SALE—7 or 8 tons chopped hay, mostly alfalfa, some vetch, \$25 per ton. Call at 316 No. Central, Henrietta, Apt. No. 6.

FOR SALE—Used coal or wood furnace, some pipe fittings, etc., reasonable if taken at once. 317 No. Riverside Ave.

FOR SALE—By owner, 5 acres, 2 1/2 miles from Medford, free soil, alfalfa, some fruit and berries, 4-rm modern house, garage and storeroom, new chicken house for 100 chickens, small barn, fenced, nice yard and flowers. Clear with taxes paid, \$6,000. Call owner at 316 No. Central, Henrietta, Apt. No. 6.

BICYCLE BASKETS—for the front of the bike—BICYCLE LUGGAGE racks for the rear—SIMS BROS.

BICYCLE SPEEDOMETERS—another shipment just arrived—SIMS BROS.

BICYCLE LIGHTS—both battery and generator types—SIMS BROS.

GARDEN TRACTORS—There will be another shipment soon. See them at Champ's Garage, 311 E. 5th St. Phone 3422.

FOR SALE—Wood range with reservoir; 3 size bed, complete; portable typewriter, 214 Stark St. Phone 1540.

BICYCLE TIRES AND TUBES—when you think of bike tires think of SIMS BROS.

FOR SALE—Complete potato chip manufacturing equipment which includes cooker with gas blower, electric potato peeler, electric slicer, washer, scales, pans, baskets, tubs, 25,000 standard staples, flat top walnut desk and chair, ledger, binders, some filing cabinets, heating stove, circulating heater, automatic gas hot water heater, electric circulating fan, truck body and many other items. Building is solid and must vacate at once. See Carol J. Parker, 610 S. Central.

CERTIFIED LUBRICATION
Firestone Tires & Batteries
Battery Recharging—Tire Recapping
Pick Up & Delivery Service
Phone 3422
TEXACO DEALER
6th & Grape Phone 0174

JUST ARRIVED
AT LEWIS SUPER

Goedrich Seat Covers
sizes for most cars

1000 Mr. Radio Batteries
Also Radio A & B Batteries

Cowhide Work Gloves
with safety cuff

Baby Strollers

Clothes Racks
Highway space saver

LEWIS SUPER SERVICE
8th & Front Phone 2119

BICYCLE SPEEDOMETERS—tells how far and fast you go—SIMS BROS.

BICYCLE HEADLIGHTS—why take a chance at night without a light—we have them—three types—SIMS BROS.

WATCH REPAIRING—New shipment of watches, lady's and men's watch bands, etc. Steve's Watch Shop, 411 E. Main.

PRUNERS wanted. Transportation furnished to and from town. Phone J. F. Arnold, 6062.

CASH IN A FLASH FOR YOUR CAR
Save Time Cash and Gas
Call Automobile Market, Friendly Medford Dealer
Ph. 3919 6th and Bartlett
No Red Tape When You Sell to US

FOR SALE—Buescher E-Flat Alto saxophone, with music stand and portfolio. Call 3268.

CONEY fur jacket, like new, size 12. Phone 7497.

AUTO PAINTING—Let us paint your car before spring driving season. Lewis Super Service.

BUILD service at your place. Registered Hereford and Gurnsey, Harry E. Miller, Phone 6033.

FOR SALE—Westinghouse electric toaster and Hotpoint electric range. Phone 2738.

WANTED—2 experienced waitresses. Apply in person. Maid-Rite.

WANTED TO RENT—2 or 3 bedroom house unfurnished. Phone 9415.

FOR HELP with your income tax reports phone 3213, 33 Ross Court.

GOOD two bedroom house for sale. \$24 Cedar.

Wood and Coal Combination HEATERS
Younger's Appliance
31 N. Bartlett

JUST ARRIVED-NEW STOCK

Firestone TIRES

Guide Grip Tractor Tires 550-16 6 ply

Transport Truck and Bus Tires

600-20	6 ply
600-20	8 ply
650-20	6 ply
700-20	8 ply
700-20	10 ply
750-20	8 ply
825-20	10 ply

PAR STORES

Main and Holly Phone 5550

Their Favorite Drink is

Snider's GRADE A PASTEURIZED MILK

They love it—they thrive on it—there's hardly a child who will refuse a glass of milk. Keep them satisfied, happy and healthy with creamy, rich Snider's milk. A glass at each meal and with their afternoon snack will put roses on their cheeks, a sparkle in their eye, keep their bodies fit and their minds alert.

SNIDER DAIRY & PRODUCE CO.
28 North Bartlett Street

THE MOST AMAZING WILD HORSE STORY EVER FILMED

COMING WILDFIRE

BOB STEELE
STERLING HOLLOWAY
JOHN MILIAN
WILLIAM FARNUM
VIRGINIA MAPLES
FRANCIS FORD

Produced by Willam B. Davis
Directed by Robert Allen
Photographed by CHESTER COE

CRATERIAN

LET ROGUE RIVER CHEVROLET BE YOUR LUBRICATION HEADQUARTERS

WE are now able to offer you the very **FINEST LUBRICATION SERVICE** available! You don't have to be satisfied with anything but **THE BEST**—the **CORRECT LUBRICANTS IN THE RIGHT PLACES**. We invite you to inspect our new lubrication department and watch your car being lubricated by experts.

Come at Your Convenience - - - - No Appointment Necessary

ROGUE RIVER CHEVROLET

Ninth and Bartlett Streets
THE HOME OF SUPER SERVICE