

• THE HOME OF GROCETERIA GOODNESS • ONE SHOPPING STOP FOR EVERYTHING •

*We Couldn't Get the Sugar to Bake Them So  
We Brought Them Out From Chicago!*

# COOKIES

An unusually fine assortment of cookies—mighty good ones too—on sale at both Groceteria Bakery departments.

- Windsor Sandwich
- Marshmallow Tasty
- Iris Sandwich
- Butter Honey Fig Bars
- Scotch Cake
- Home Style
- Cocoa Dainty

*Priced 2 dozen 19c to 18c a Dozen*



Home Purity  
Vitamin Enriched  
**BREAD**  
1-lb. Loaf 9c  
1½-lb. Loaf  
2 for 25c

## CHOCOLATE BON BONS

The finest Chocolate Eclairs you ever tasted

BOX OF 16  
LARGE ECLAIRS **31c**



## HOME PURITY CAKES

Carnation PINK and WHITE Layer Cake	Pilgrim BROWN SUGAR Layer Cake	Southern NUT CHOCOLATE Layer Cake
---	--------------------------------------	---

Whole Cake 59c - Half Cake 30c

## Groceteria Guaranteed Meats

GOOD OR YOUR MONEY BACK

### A MID-WINTER TREAT!

What could be finer than a dinner of good Corned Beef and Cabbage? We say "good" because we made it — know what kind of beef was used so sell it under the guarantee of "good or your money back."

**SUGAR CURED BONELESS  
CORNERED BEEF** lb. **34c**

All surplus fat removed. Ideal served with cabbage or horseradish sauce.

### WEEK-END SPECIAL!

Grade A Pot Roast of Steer Beef... Selected Cuts for Roasting.  
Guaranteed Goodness

lb. **28c**

Ground Steer  
**BEEF**

**29c** lb.

Extra Lean and Delicious

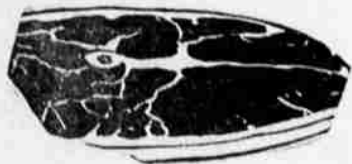
GRADE AA  
Pure Pork Sausage

**39c** lb.

Ground  
**VEAL LOAF**

**32c** lb.

Ideal for Patties or Meat Loaf



Tender, Juicy, Delicious

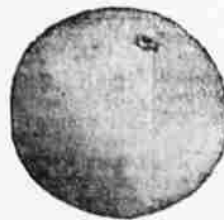
## STEAKS

- Grade A Porter House Steaks . . . . . lb. 50c
- Grade A Round Steaks . . . . . : lb. 40c
- Grade A Sirloin Steaks . . . . . : lb. 33c
- Grade A Rib Steaks . . . . . : lb. 31c
- Grade A Top Sirloin Steaks . . . . . lb. 50c

RUMP ROAST BEEF	SHORT RIBS STEER BEEF	STANDING PRIME RIB	BONELESS CHUCK ROAST No Waste	ENGLISH CUT ROAST
<b>27c</b> lb.	<b>21c</b> lb.	<b>31c</b> lb.	<b>39c</b> lb.	<b>28c</b> lb.

## Groceteria Greater Savings

- Duff's Gingerbread Mix . . . . . package **23c**  
Makes fine Ginegrbread—Muffins. Just add water. The sugar and all ingredients are in the mix.
- Saccharin — 1000 tablets. ¼ grain **49c**—½ grain **69c**  
Sweetens all hot and soft drinks. Save your meagre supply of sugar for other use.
- O-So-Good Macaroni . . . . . 2¼ lbs. **24c**  
A lot of good food for so little.
- Pellaco Sweet Potatoes . . . . . No. 2½ can **27c**  
Just reheat in a baking pan for fine Candied Sweet Potatoes—ready sweetened.
- E-Z Liver Loaf . . . . . can **23c**  
A different yet very good sandwich for the lunch box. With rye bread and your favorite beverage. Good? You bet!
- Tuxedo Shredded White Meat Tuna, No. ½ can **27c**  
Creamed on toast—A meal for 6 for 27c.
- Mothers Cocoa . . . . . 1-lb. pkg. **12c**  
The children will drink their milk when prepared with Cocoa.
- Gold Bar Early Garden Peas . . . . . No. 2 can **15c**  
Finer flavor—sweet and tender—one good food now selling below pre-war price.
- GOLD BAR Unsweetened Florida Grapefruit Juice No. 2 Can **15c**  
The natural juice of fully ripe Florida fruit. Try it and you will always use.
- Del Rogue Freestone Peaches . . . . . No. 2½ can **27c**  
We sent an eastern market operator friend a few cans as a gift. He telegraphed for 20,000 cases. He may get them next year!
- Rose Brand Mackerel . . . . . No. 1 tall can **19c**  
Canned fresh. But if you like good salt mackerel, brown in skillet and salt 'em. Better than regular salt mackerel.
- Aunt Jemima Pancake Flour . . . . . large pkg. **26c**  
Blend of corn and wheat flour. If you lived in the corn belt it's Aunt Jemima for you!
- Sperry Pancake & Waffle Flour, large 3-lb. pkg. **32c**  
A Buttermilk Hot Cake—light as a feather.
- My-T-Fine Lemon Pie Filler . . . . . package **5c**  
Like good Lemon Pie? Yes, we said good!
- Nabisco Bran . . . . . small pkg. **9c**—large **17c**  
Milled fine to avoid irritation. A gentle bulk laxative.
- Malt-o-Meal . . . . . package **23c**  
Listen to Graham Fletcher—noted commentator—KMED, Monday, Wednesday and Friday.
- Wheatena . . . . . package **22c**  
The box top good for 10c on your favorite brand of Coffee.
- Flavor Loaf Flour . . . . . 49-lb. sack **\$2.29**  
Blended to insure a finer flavored loaf of bread. Money Back Guarantee.
- Hemo . . . . . jar **59c**  
A malted chocolate flavored beverage. Two servings daily contain daily requirements of Vitamins A, B1, B2, G, D and Iron.



- SUNKIST ORANGES, size 252's. . . 3 Lbs. **25c**
- Arizona Grapefruit, seedless, sz. 64's, ea. **5c**
- NEW RED POTATOES . . . . . 3 Lbs. **25c**
- GREEN PEAS . . . . . pound **25c**
- ARTICHOKES, large . . . . . 2 for **25c**
- DANISH SQUASH . . . . . 3 Lbs. **23c**
- Sweet Spanih Onions, boiler size, 10 Lbs. **49c**

## GATES & LYDIARD

SAVINGS WITHOUT SELF-DENIAL

6TH AT CENTRAL—6TH AT GRAPE