



**PRICES** that say **BUY! BUY! BUY!**

## NUCOA

Why Worry About the Butter Shortage?

When you can have Nucoa?  
It is unsurpassed as a Spread  
for Biscuits, Hot Cakes, Muffins,  
etc.

lb. 27c



**CAKE FLOUR**

Soft As Silk  
for your holiday  
baking

pkg. 25c

**OYSTERS**

Burgess  
Brand

7 1/2 oz. can 42c

**BEANS**

Great Northern

3 lb. bag 39c

**MATCHES**

6 box carton 19c

**TOILET TISSUE**

Fabric soft 3 rolls 20c

**RED SALMON**

No. 2 can 47c

**EGGS**

Buy Them Here and be Sure of Finest  
Quality, fresh stock of Local Eggs Daily!

PEANUT BUTTER ..... 2-pound jar 49c  
BAKING POWDER, Clabber Girl, 2-lb. can 19c  
POPOVER MIX, Joy brand ..... pkg. 15c  
KRISPY CRACKERS ..... 2-pound box 33c  
BORDEN'S HEMO ..... jar 59c  
CODFISH, old fash. salt ..... lb. brick 49c  
SOS ..... 10-pad package 23c  
PLUMS, Standby deluxe ... No. 2 1/2 can 19c  
BLEACH, White Rose ..... 1/2-gal. jug 19c  
SUNBRITE CLEANSER ..... 3 for 10c  
SWIFT'S PREM Ideal Lunch Meat 12-oz. can 33c  
POPCORN, guaranteed to pop ..... 2 lbs. 25c

HEINZ CATSUP ..... bottle 19c  
FLOUR, Drifted Snow ..... 50-lb. bag \$2.38  
TOMATO SOUP, Campbell's ..... 3 cans 25c  
TUNA, Tuxedo grated ..... No. 1/2 can 28c  
SALT, Morton's plain or iodized ..... pkg. 7c  
SHREDDED WHEAT, Nabisco ... package 11c  
WHEATIES, breakfast of champions, pkg. 11c  
CHOCOLATE SYRUP, Sieffers... pt. jar 25c  
The Ideal Topping for Ice Cream  
ICE CREAM, Sunfreeze ..... quart brick 40c  
Your Choice of Many Flavors  
HERSHEY COCOA ..... 1/2-lb. box 9c  
KNOX GELATIN ..... 4-envelope pkg. 17c

**SWEET POTATOES**

4 pounds 25c

**BULK CARROTS**

4 pounds 19c

**ONIONS**

U. S. No. 1  
Sweet Spanish

4 pounds 19c

**Tangerines**

Floridas lb. 10c

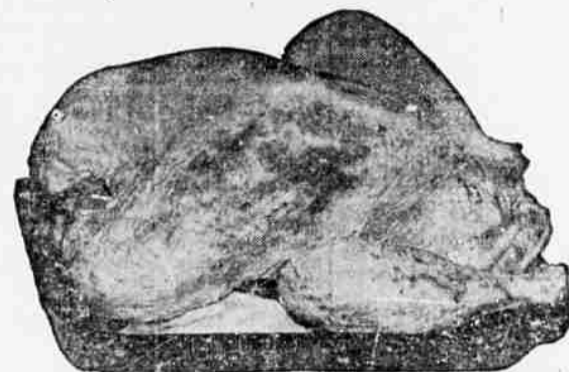
**Celery**

Utah lb. 10c  
Crisp and Tender

**RIVERSIDE MARKET**  
WHERE YOU PAY LESS—PARK EASIER  
313-314 North Riverside Phone 2117

## TURKEYS

There will be a  
Plump, Young Bird  
for you at River-  
side. Get our prices  
before you buy.



Pure Pork Sausage, lb. 39c

### SWIFT'S Finest Quality PORK

PORK CHOPS, center cuts ..... lb. 37c  
PORK LOIN ROAST ..... lb. 34c  
SHO. ROAST, boned and tied ..... lb. 39c  
HAM ROAST, boned and tied ..... lb. 45c  
SPARE RIBS, nice and lean ..... lb. 25c

Sauerkraut ..... pound 10c

### GRADE A BEEF

STEAKS	ROASTS
ROUND ..... lb. 40c	RUMP ..... lb. 25c
SIRLOIN ..... lb. 39c	RUMP, boneless lb. 43c
T-BONE ..... lb. 48c	CHUCK ..... lb. 28c
RIB ..... lb. 34c	<small>Blade or Arm</small> SHORT RIBS .. lb. 28c

Pure Ground Beef...lb. 25c

We have built a reputation on our ground meats. Nothing is ever added to the meat. It has always been good and it will continue to be good as long as we operate the market.

### GRADE A VEAL

STEAKS and CHOPS	ROASTS
ROUND ..... lb. 46c	CHUCK <small>Blade or Arm</small> lb. 29c
T-BONE ..... lb. 43c	RUMP ..... lb. 32c
Sirloin or Rib lb. 39c	RUMP, boneless lb. 45c
	BREAST ..... lb. 19c

PURE LARD .... lb. 20c

DILL PICKLES, 3 for 10c  
Taylor's Large